

# **Virtual Memory Switch Manager User's Manual**

**SRP-370/372 Two Color Thermal Printer**

## Index

<b>1. Introduction ...</b>	<b>2</b>
<b>2. User environment ...</b>	<b>2</b>
<b>3. Usage ...</b>	<b>3</b>
3.1 Printer communication setting ...	3
<b>4. Printer status ...</b>	<b>5</b>
4.1 Operation ...	6

# 1. Introduction

This manual is to explain how to use the Virtual Memory Switch Manager for SAMSUNG BIXOLON SRP-370/372 Two Color Thermal Printer.

# 2. User environment

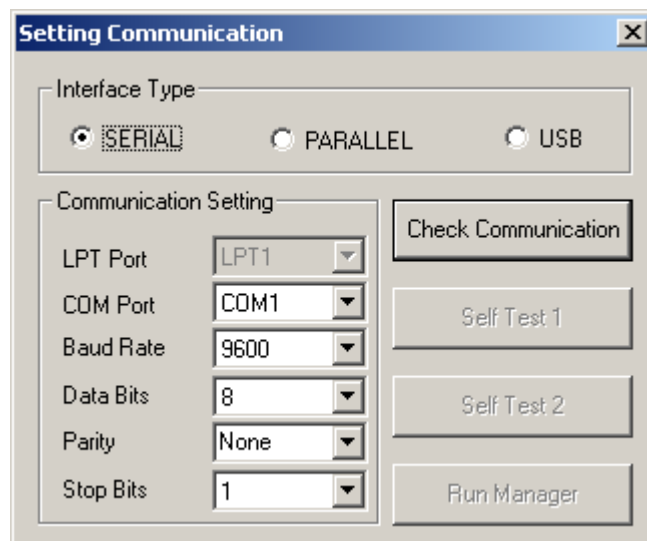
You can use the Virtual Memory Switch Manager on the following Operation Systems.

Microsoft Windows 98  
Microsoft Windows ME  
Microsoft Windows 2000  
Microsoft Windows XP  
Microsoft Windows 2003 Server

## 3. Usage

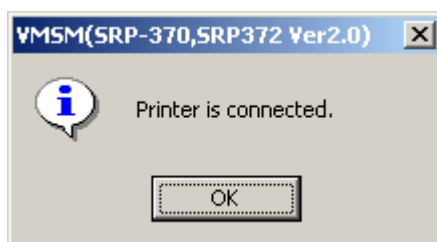
### 3.1 Printer Communication setting

When you execute the program, the following window will pop up.

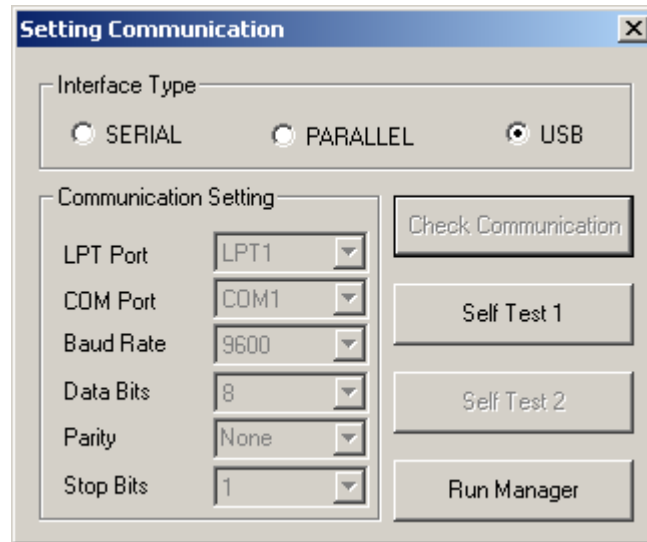


Select the interface type of the connected printer.

[Check Communication]: Checks the status of the communication. When there is not any communication trouble, the following window will pop up.



When there is not any communication trouble, the Self test 1 button and the Run manager button will be activated.



[Self Test1]: prints the Self test page.

[Run Manager]: opens the Memory Switch setting window.

## 4. Printer Status

When you click the [Run Manager] of the communication condition setting window, the following window will pop up.

**Virtual Memory Switch Manger(For SRP-370/SRP-372 Ver2.0)**

Virtual Memory Switch Status Display

[PIN 1] Reserved	<input type="radio"/> Reserved	<input type="radio"/> Reserved
[PIN 2] Reserved	<input type="radio"/> Reserved	<input type="radio"/> Reserved
[PIN 3] Reserved	<input type="radio"/> Reserved	<input type="radio"/> Reserved
[PIN 4] Reserved	<input type="radio"/> Reserved	<input type="radio"/> Reserved
[PIN 5] Reserved	<input type="radio"/> Reserved	<input type="radio"/> Reserved
[PIN 6] Reserved	<input type="radio"/> Reserved	<input type="radio"/> Reserved
[PIN 7] Reserved	<input type="radio"/> Reserved	<input type="radio"/> Reserved
[PIN 8] Reserved	<input type="radio"/> Reserved	<input type="radio"/> Reserved

Default Code Page:

AutoLine feed:

AutoCutter:

Printer Model :

Firmware Version :

Progress:

User Status Setting

Save Status Load Status Initialize Status

Communication Status

Baud Rate :

Data Bits :

Parity :

Flow Control :

Setup Status

Get Status

Set Status

Communication Setting

Change Comm Type

Change Switch

Switch 2 Status

Switch 9 Status

Exit

## 4.1 Operation

The Memory Switch Manager window shows the current dip switch setting of the printer and allows setting up the status.

**Virtual Memory Switch Manger(For SRP-370/SRP-372 Ver2.0)**

**Virtual Memory Switch Status Display**

[PIN 1] Reserved	<input type="radio"/> Reserved	<input type="radio"/> Reserved
[PIN 2] Reserved	<input checked="" type="radio"/> Reserved	<input type="radio"/> Reserved
[PIN 3] Auto Cutter	<input checked="" type="radio"/> Partial Cut	<input type="radio"/> Full Cut
[PIN 4] Default Code Page	<input checked="" type="radio"/> Switch Off	<input type="radio"/> Switch On
[PIN 5] Default Code Page	<input type="radio"/> Switch Off	<input checked="" type="radio"/> Switch On
[PIN 6] Default Code Page	<input type="radio"/> Switch Off	<input checked="" type="radio"/> Switch On
[PIN 7] Default Code Page	<input checked="" type="radio"/> Switch Off	<input type="radio"/> Switch On
[PIN 8] Default Code Page	<input type="radio"/> Switch Off	<input checked="" type="radio"/> Switch On

**Default Code Page**  
WPC1255 (Hebrew)

**AutoLine feed**  
Disable

**AutoCutter**  
Partial Cut

**Printer Model :** SRP-370  
**Firmware Version :** 1.00 ESC\POS

**Communication Status**  
 Baud Rate : 115200  
 Data Bits : 7  
 Parity : Odd  
 Flow Control : Xon/Xoff

**Communication Setting**  
Change Comm Type

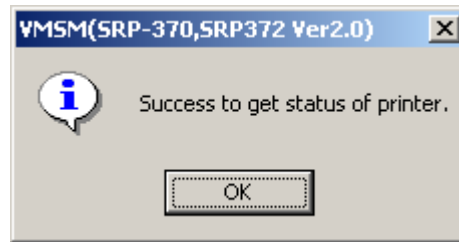
**Setup Status**  
 Get Status  
 Set Status

**Change Switch**  
 Switch 2 Status  
 Switch 9 Status

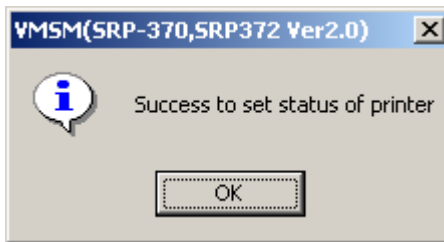
**User Status Setting**  
 Save Status   Load Status   Initialize Status   Exit

There are 5 main buttons on this window

[Get Status]: shows the current setting of the Memory Switch. If you get the setting of printer successfully, the following Windows will pop up.



[Set Status]: allows setting up new values specified by the user. If you set the Memory Switch properly, the following window will pop up.

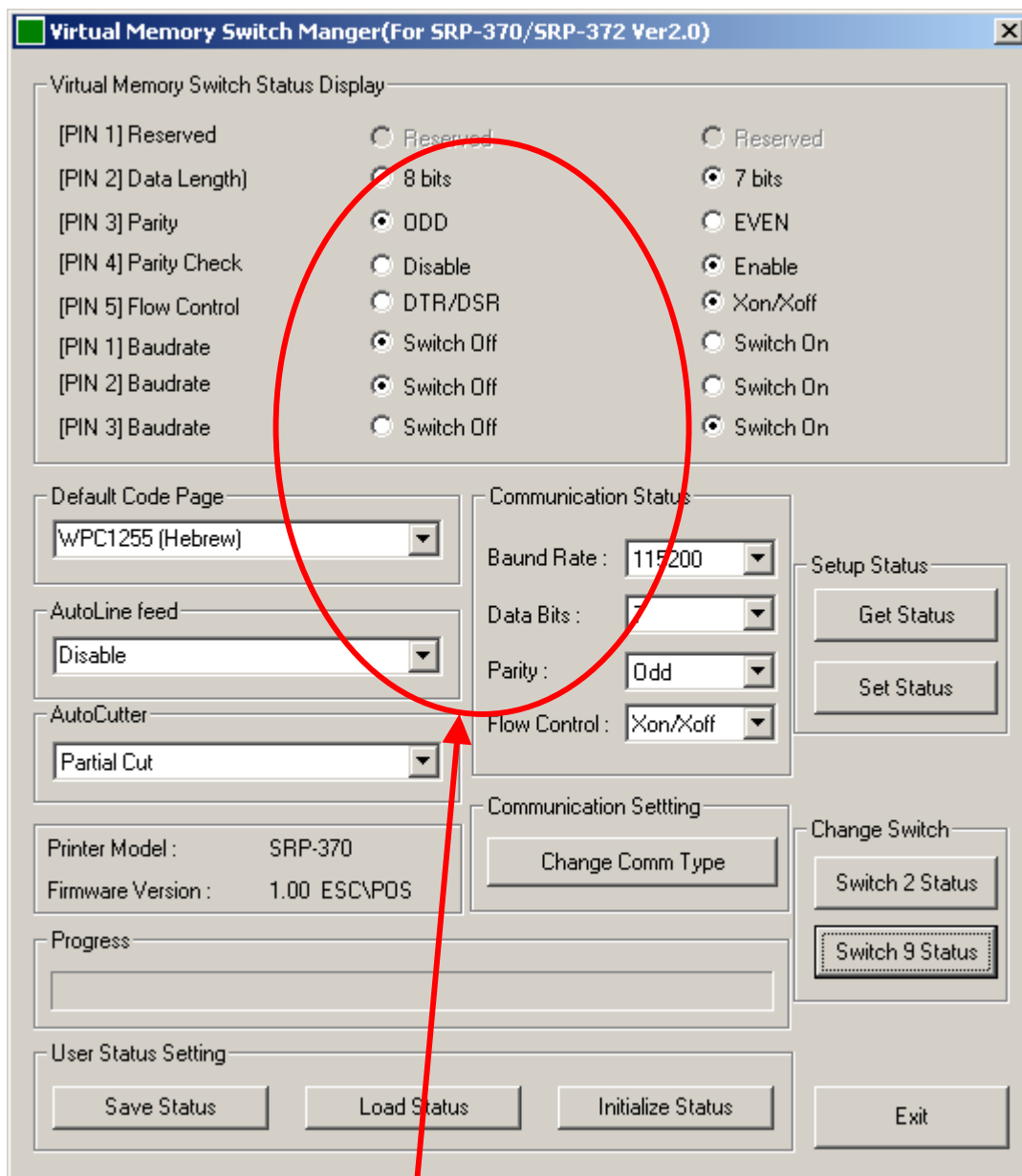


[Save Status]: saves the new setting as a file.

[Load Status]: shows the setting loaded from the file.

[Initialize Status]: initializes the setting





Notes) The user interface, made with the radio buttons, only shows the status of the printer. To set up the status, please use the combo boxes.

[Switch 2 Status]: displays the status of the Memory Switch 2.

[Switch 9 Status]: displays the status of the Memory Switch 9.