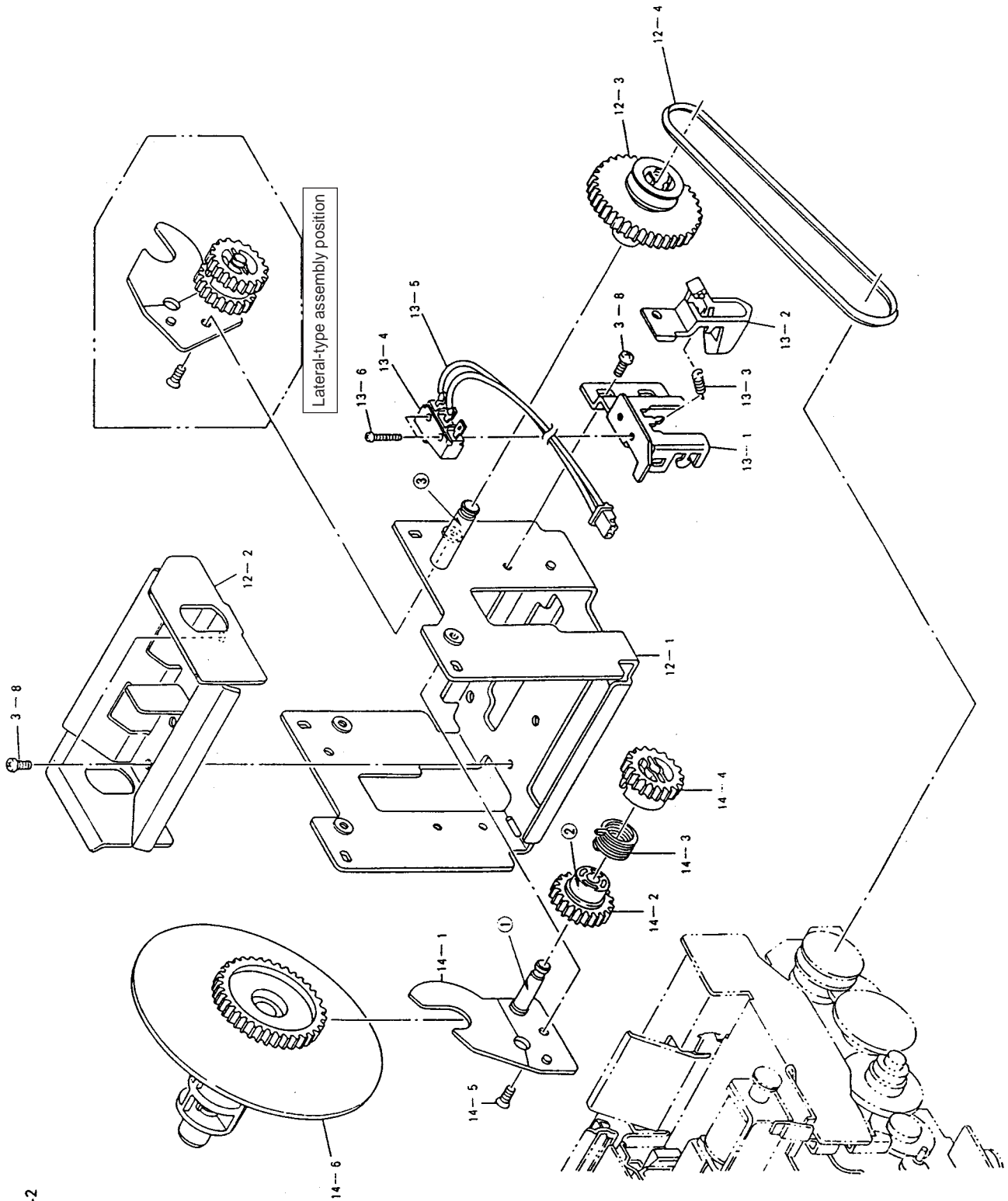
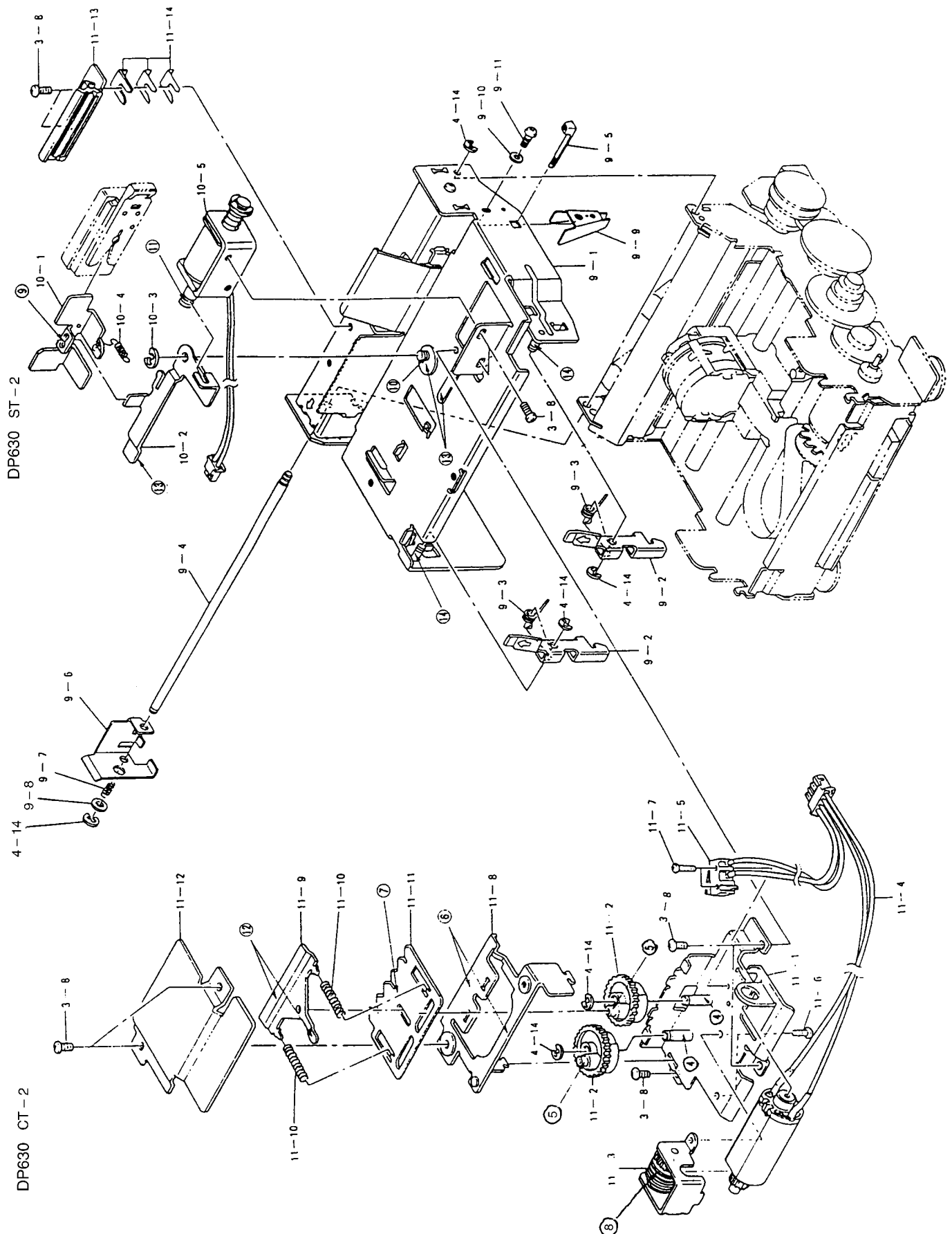


MODEL	REV
0P630	B
0P630-V	B



DP630 PW-2



4-5-6 Lubrication List [Options] (See the Illustrated Drawing for CT-2, ST-2 and PW-2)

Arrow No.	Lubrication Spot	Oil	Q'ty	Frequency	Remarks
1	14-2, 14-3, 14-4 mounting pivots	MALTEMP	Adequately	Upon replacement	
2	Drive gear B (14-2) and clutch spring (14-3) joints	EPINOC	Plenty	Upon replacement	
3	12-3 mounting pivot	MALTEMP	Adequately	Upon replacement	
4	11-2 mounting pivot	MALTEMP	Adequately	Upon replacement	
5	11-11 assembling pin	EPINOC	Plenty	Upon replacement	
6	11-11, 11-8 contact surface	EPINOC	Plenty	Upon replacement	
7	11-9, 11-11 contact surface	EPINOC	Adequately	Upon replacement	
8	Entire periphery of wormwear on worm holder BK (11-3)	MALTEMP	Adequately	Upon replacement	
9	10-1, 10-2 joints	MALTEMP	Adequately	Upon replacement	
10	10-2 mounting pivots	MALTEMP	Adequately	Upon replacement	
11	10-2, 10-5 joints	MALTEMP	Adequately	Upon replacement	
12-14		MALTEMP	Adequately	Upon replacement	