

## Posiflex PP-7000U Drivers Installing Guide

Updated date: 2007/03/28

### Installing Drivers

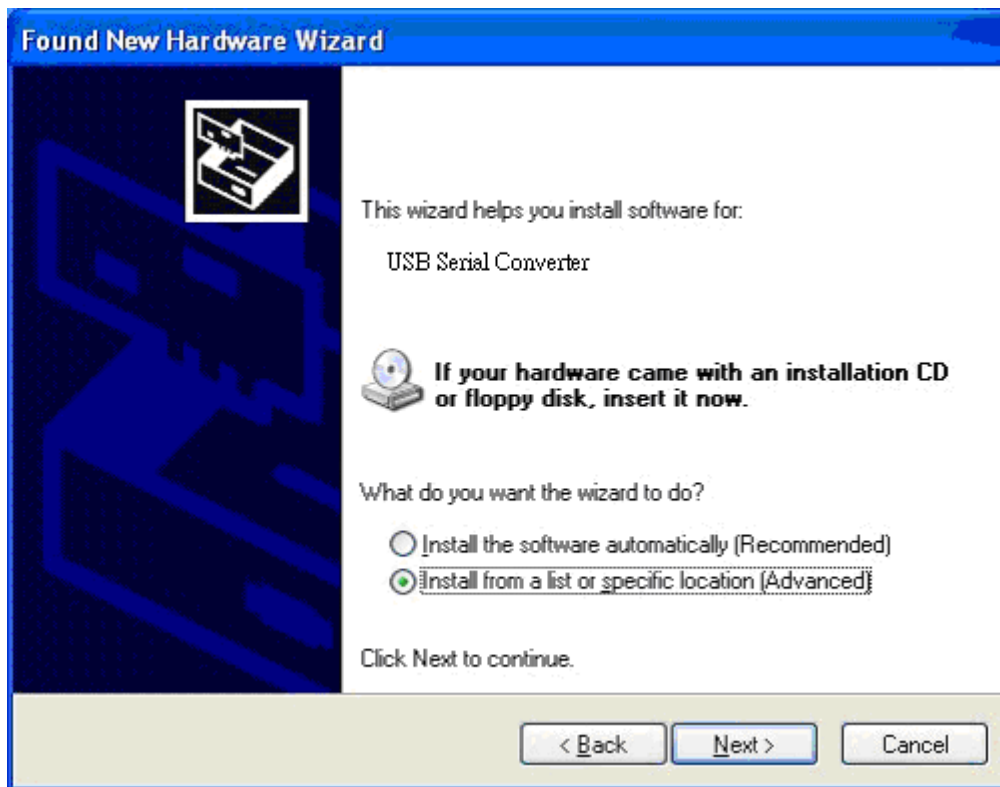
To install PP-7000U drivers under Windows 2000/XP/Server2003 for 32-bit base , follow the instructions below:

If a device of the same type has been installed on your machine before and the drivers that are about to be installed are different from those installed already, the original drivers need to be uninstalled. Please refer to the uninstall document for further details of this procedure.

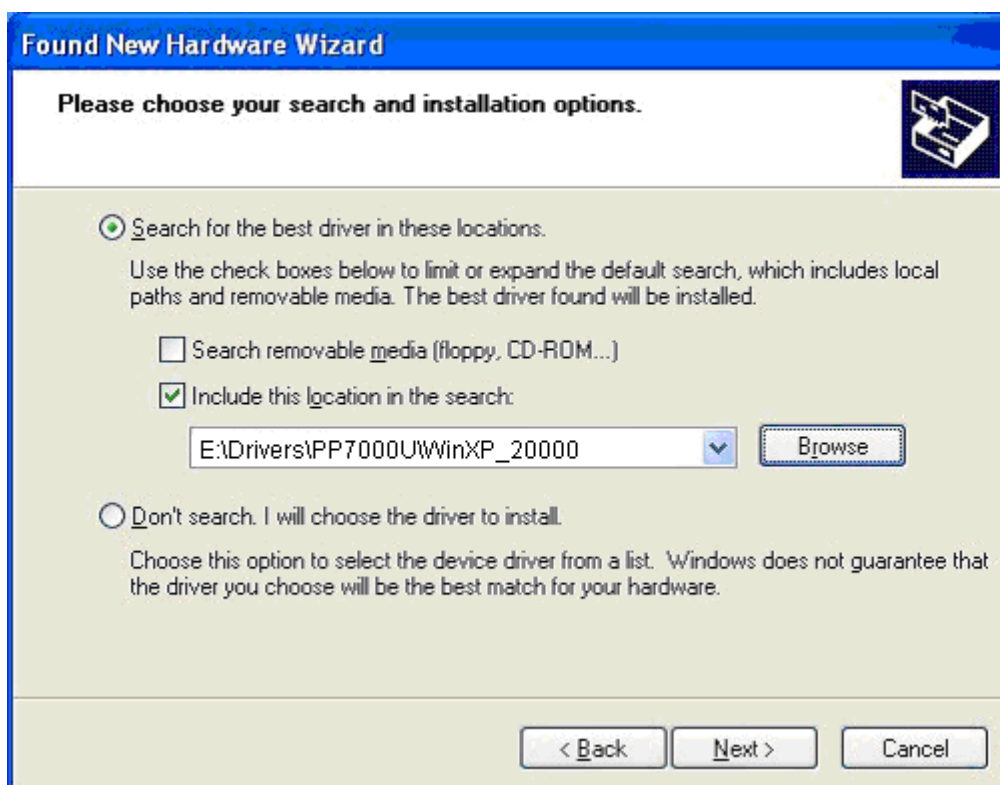
- Connect the device to a spare USB port on your PC. Select "No, not this time" from the options available and then click "Next" to proceed with the installation.



- Select "Install from a list or specific location (Advanced)" as shown below and then click "Next".



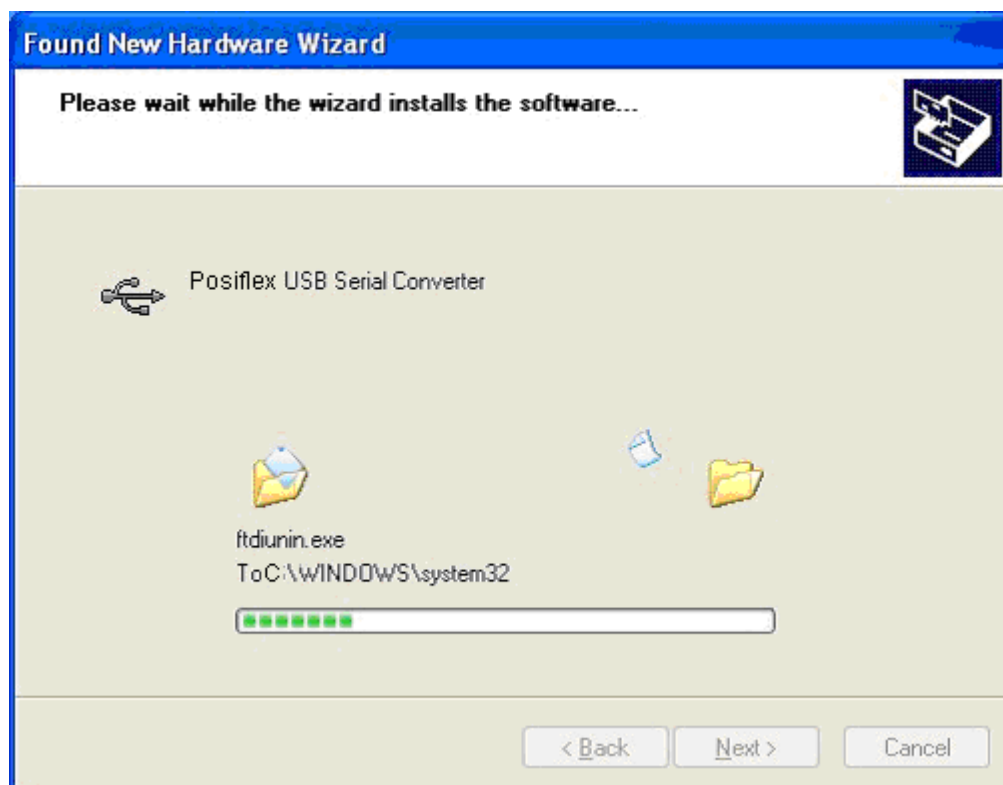
- Select "Search for the best driver in these locations" and enter the file path in the combo-box ("E:\Drivers\PP7000UWinXP\_20000" in the example below) or browse to it by clicking the browse button. Once the file path has been entered in the box, click next to proceed.



- If Windows XP is configured to warn when unsigned (non-WHQL certified) drivers are about to be installed, the following screen will be displayed unless installing a Microsoft WHQL certified driver. Click on "Continue Anyway" to continue with the installation. If Windows XP is configured to ignore file signature warnings, no message will appear.



- The following screen will be displayed as Windows XP copies the required driver files.



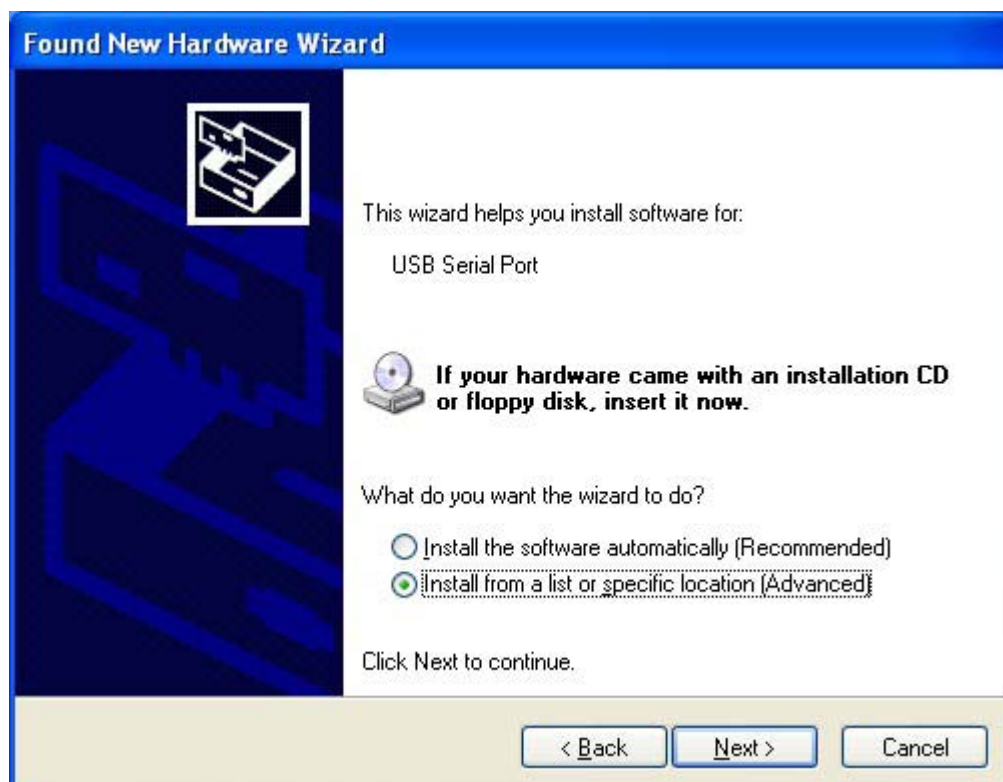
- Windows should then display a message indicating that the installation was successful. Click "Finish" to complete the installation for the first port of the device.



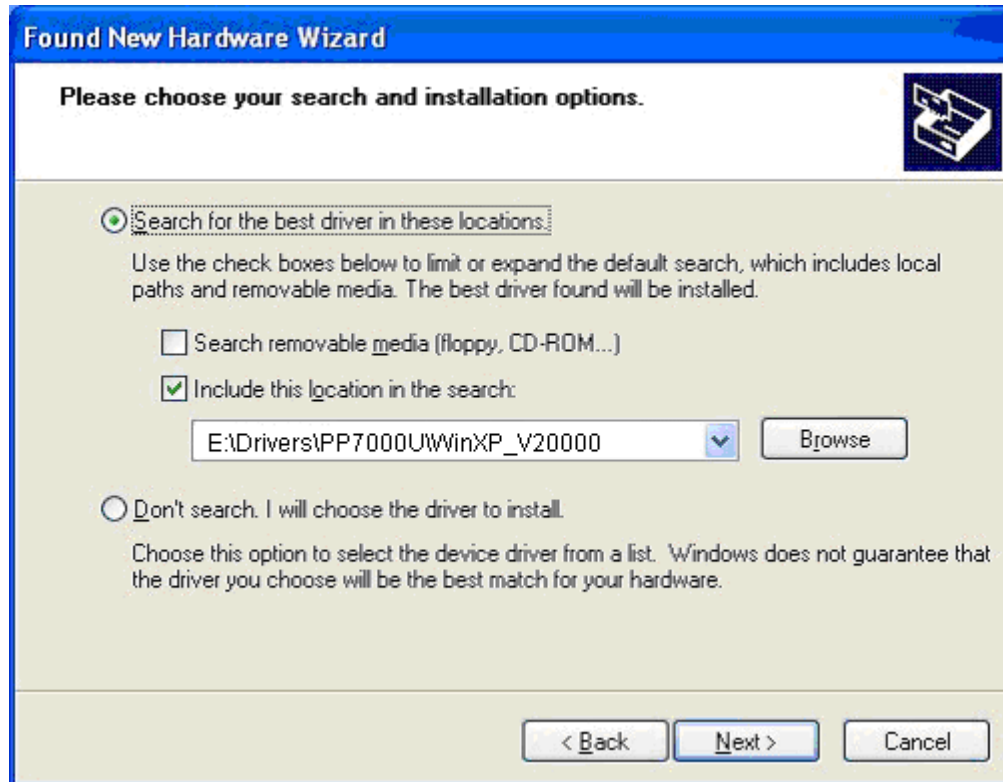
- The Found New Hardware Wizard will launch automatically to install the COM port emulation drivers. As above, select "No, not this time" From the options and click "Next" to proceed with the installation.



- Select "Install from a list or specific location (Advanced)" as shown below and then click "Next".



- Select "Search for the best driver in these locations" and enter the file path in the combo-box ("E:\Drivers\PP7000U\WinXP\_V20000" in the example below) or browse to it by clicking the browse button. Once the file path has been entered in the box, click next to proceed.



The image shows a Windows XP-style "Found New Hardware Wizard" dialog box. The title bar is blue with the text "Found New Hardware Wizard". Below the title bar, the main area has a light beige background. At the top of this area, it says "Please choose your search and installation options." followed by a small icon of a computer with a question mark. There are two radio button options. The first option, "Search for the best driver in these locations:", is selected. Below it, a paragraph explains that check boxes can be used to limit or expand the search. There are two check boxes: "Search removable media (floppy, CD-ROM...)" which is unchecked, and "Include this location in the search:" which is checked. Below the second check box is a text box containing the path "E:\Drivers\PP7000U\WinXP\_V20000" and a "Browse" button to its right. The second radio button option, "Don't search. I will choose the driver to install.", is unselected. Below it, a paragraph explains that this option is for selecting a driver from a list and that Windows does not guarantee it will be the best match. At the bottom of the dialog, there are three buttons: "< Back", "Next >", and "Cancel".

**Found New Hardware Wizard**

Please choose your search and installation options.

☒ **Search for the best driver in these locations:**  
Use the check boxes below to limit or expand the default search, which includes local paths and removable media. The best driver found will be installed.

☐ Search removable media (floppy, CD-ROM...)

☒ Include this location in the search:

E:\Drivers\PP7000U\WinXP\_V20000

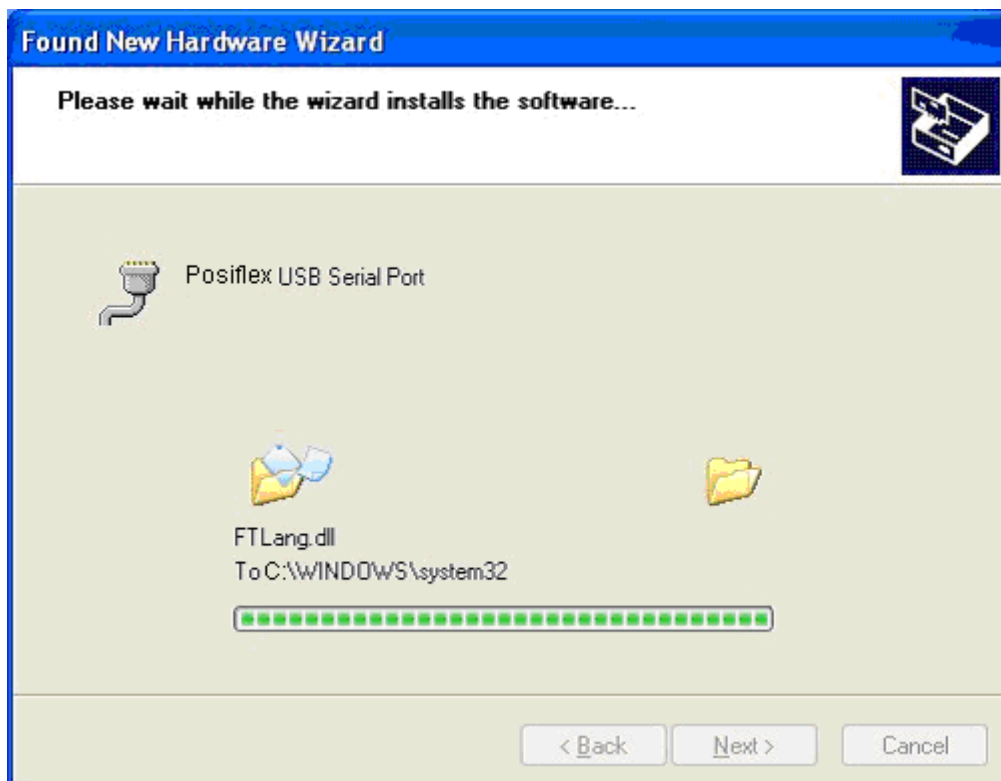
☐ **Don't search. I will choose the driver to install.**  
Choose this option to select the device driver from a list. Windows does not guarantee that the driver you choose will be the best match for your hardware.

< Back   Next >   Cancel

- If Windows XP is configured to warn when unsigned (non-WHQL certified) drivers are about to be installed, the following screen will be displayed unless installing a Microsoft WHQL certified driver. Click on "Continue Anyway" to continue with the installation. If Windows XP is configured to ignore file signature warnings, no message will appear.



- The following screen will be displayed as Windows XP copies the required driver files.

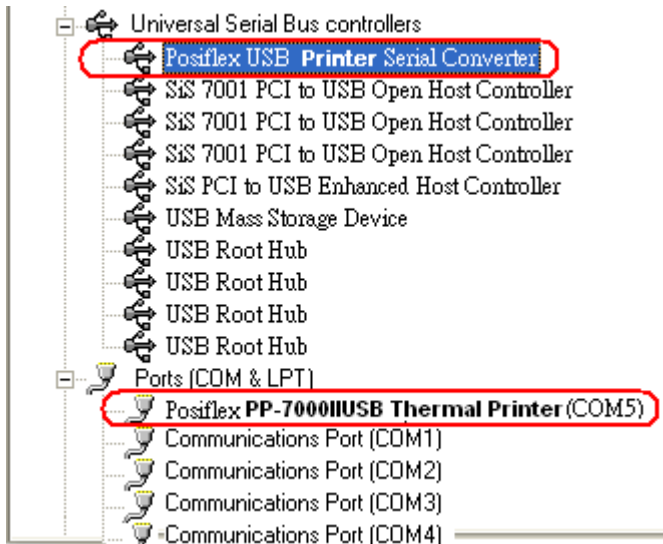




- Windows should then display a message indicating that the installation was successful. Click "Finish" to complete the installation for the first port of the device.



- Open the Device Manager (located in "Control Panel\System" then select the "Hardware" tab and click "Device Manager") and select "Universal Serial Bus controllers", the device appears as a "Posiflex USB Serial Converter" with an additional COM port with the label "Posiflex USB Serial Port".



- This driver is to allocate a COM port using information derived from the cable's physical location on USB instead of the USB serial number. If the other cables are always plugged into the same USB port, then they will appear to the system as the same COM port.

- Limitations**

Although this drivers can be used to control the number of COM ports created in the system, it cannot prevent the installation of a new USB device for every unique device that is plugged in.

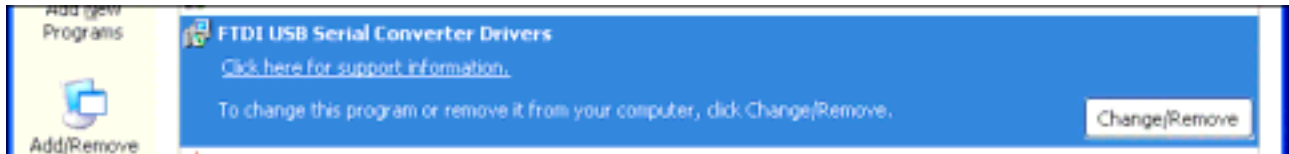


## Uninstalling Drivers

To uninstall PP7000U drivers, follow the instructions below:

- Disconnect any PP7000U devices that are attached to the PC.
- Open the Add/Remove Programs utility located in "Control Panel\Add/Remove Programs".

Select "FTDI USB Serial Converter Drivers" from the list of installed programs.



- Click the "Change/Remove" button. This will run the FTDI uninstaller program. Click "Continue" to run the uninstaller or "Cancel" to exit.



- When the uninstaller has finished removing the device from the system, the caption on the "Cancel" button will change to "Finish". Click "Finish" to complete the process.

## FTClean Utility

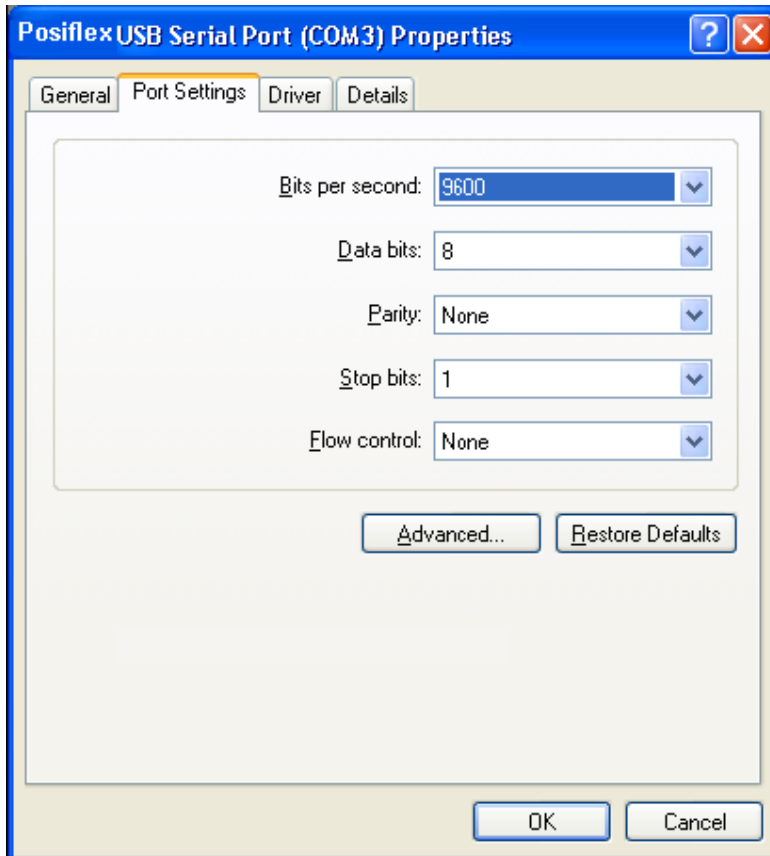
In rare cases when devices have been uninstalled incorrectly (such as by running the uninstaller by double clicking) and the host system has not had the driver removed properly, it is possible that the device cannot be reinstalled until the system has been cleaned up.

FTClean.exe program has been written to remove registry entries and files relating to PP7000U device drivers.

As for the detail steps, please refer to the "FTClean Utility Guide".

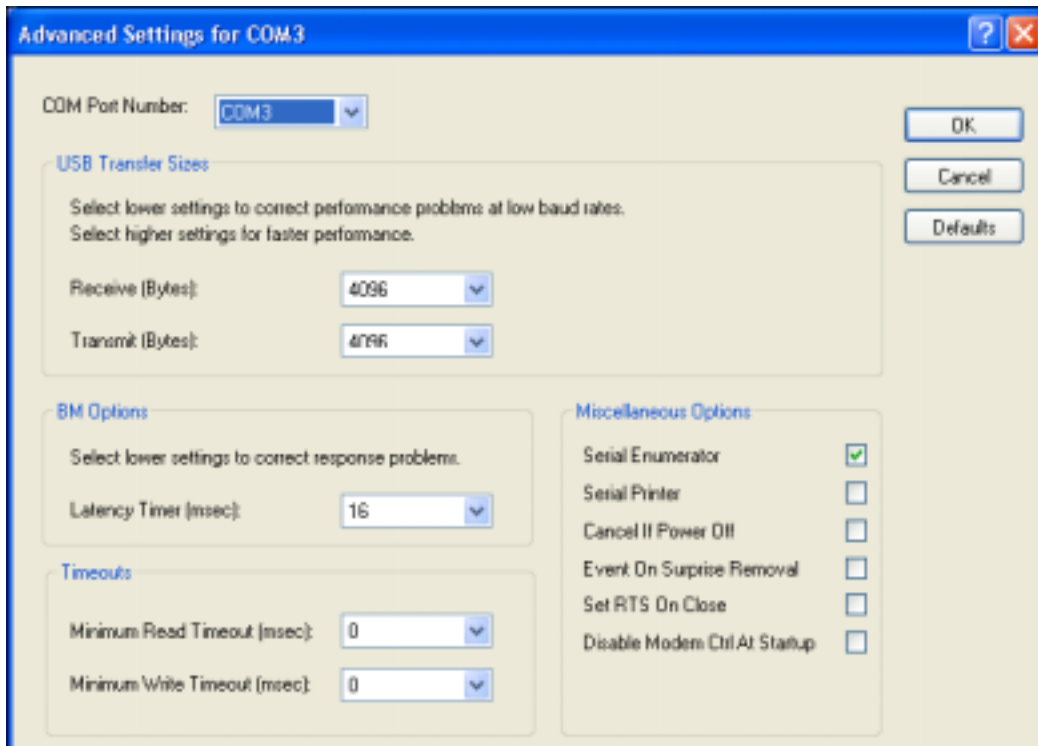
## Advanced drivers options

An advanced properties page is available for devices using this drivers. To access the advanced properties page in Windows 2000 or Windows XP, go to "Control Panel > System" then select the "Hardware" tab and click "Device Manager...". Find the USB serial port you want to change the properties of and right-click on it. Select "Properties" from the menu then select the "Port Settings" tab to get the window below.



This page allows configuration of the basic device COM Port Number. To access more advanced settings, click on the "Advanced..." button to display the advanced properties page (shown below).

This page will allow COM port number to be altered:



## **Driver installation fails and Windows XP gives error code 10**

Windows error code 10 indicates a hardware error or failed driver installation. This error may appear if a device has insufficient power to operate correctly (e.g. plugged into a bus powered hub with other devices), or may indicate a more serious hardware problem. Also, it may be indicative of USB root hub drivers being incorrectly installed.

Please contact the Posiflex technical support department.