



SiWDaemon™ User's Guide

Version 1.0

February 6, 2015

Contents

PREFACE.....	1
1.1 <i>What is SiWDaemon?</i>	1
1.2 <i>SiWDaemon Features</i>	1
GETTING STARTED.....	2
2.1 <i>Installation</i>	2
FUNCTION DESCRIPTION	5
3.1 <i>SiW Daemon Control Panel</i>	5
3.1.1. Device	5
3.1.2. Setting	6
3.1.3. Multi Monitor	6
3.1.4. About	8
3.2 <i>Device Settings Panel</i>	8
3.2.1. Calibration	8
3.2.2. Mouse.....	10
3.2.3. Touch	11
3.2.4. About	11
3.3 <i>Tray Menu</i>	12

Preface

1.1 What is SiWDaemon?

S / W tool is to make end user to easily adjust the settings of SiWDaemonTM. SiWDaemonTM is the controller and the USB or operatively connected by COM port.

1.2 SiWDaemon Features

③ Calibration

Calibrate touch screen coordinate error (coordinate error between touch panel and monitor)

③ TSP – Monitor Mapping

Touch event on the touch panel by a specific monitor.

③ Beep Setting

Setting beeping request and attribute when in touch event

③ Mouse Setting

This is a touch event which is relevant to operation settings. If you use Windows 7 & 8, some menus are available when emulation is selected

③ Touch Setting

Possible to setting for the touch, Palm Rejection, Sensitivity etc...

Getting Started

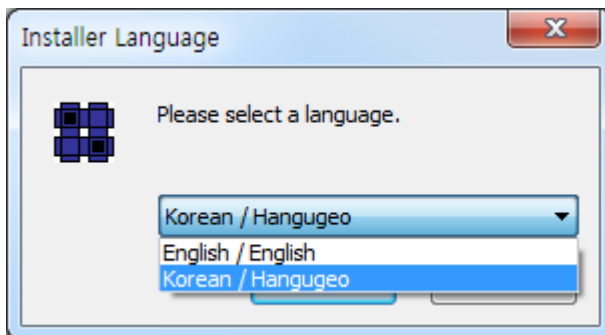
2.1 Installation

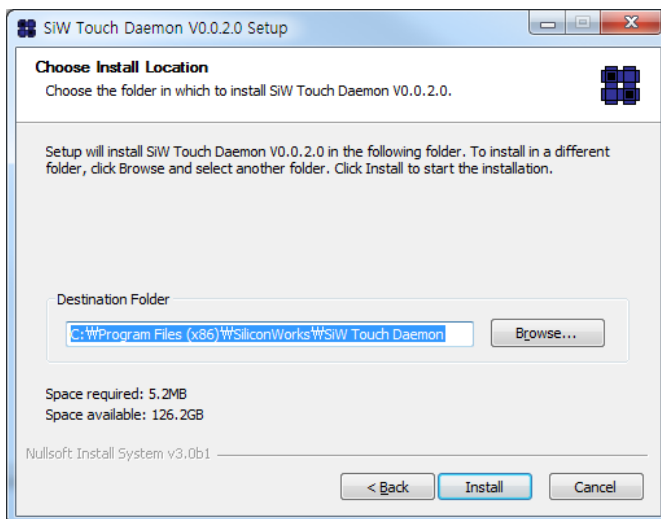
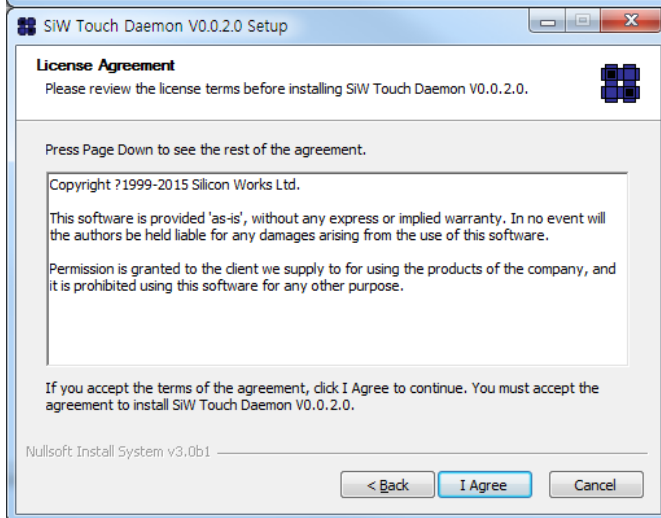
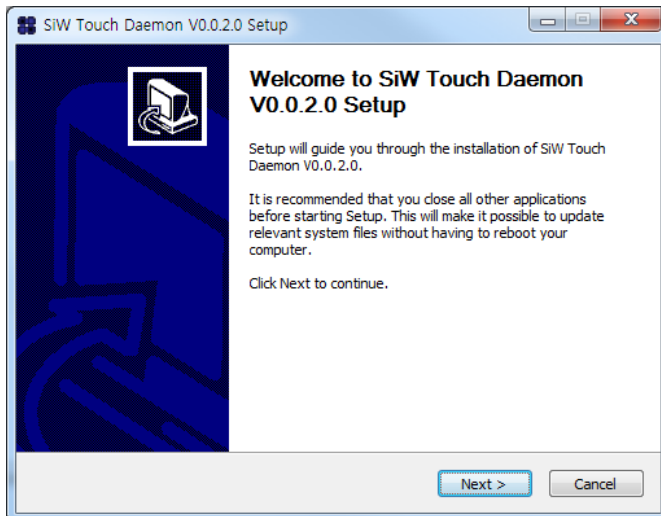
Please follow the below instruction step by step to install SiWDaemon™

1. Install SiWDaemon

- SiWTouchDaemon_Installer_x86_Vx.x.x.x.exe (For 32 bit)
- SiWTouchDaemon_Installer_x64_Vx.x.x.x.exe (For 64 bit)

Notice: When in the end of installation process, it must to be reboot unless it cannot operation normally .





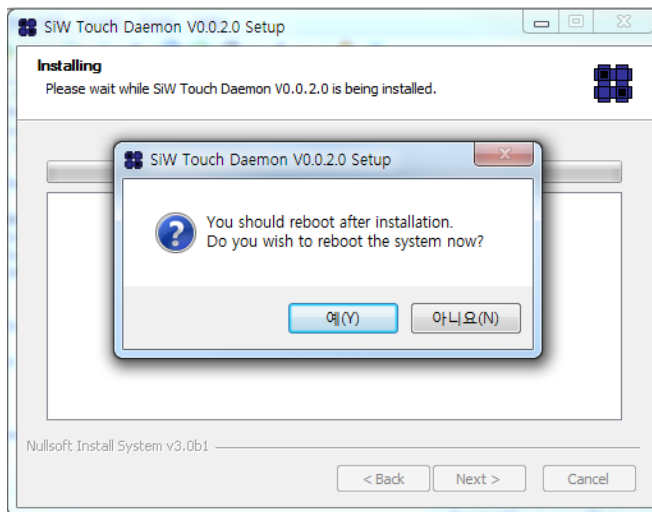


Figure 1. Installation

Function Description

3.1 SiW Daemon Control Panel

Function of SiWDaemon™ Control Panel are as following :

3.1.1. Device

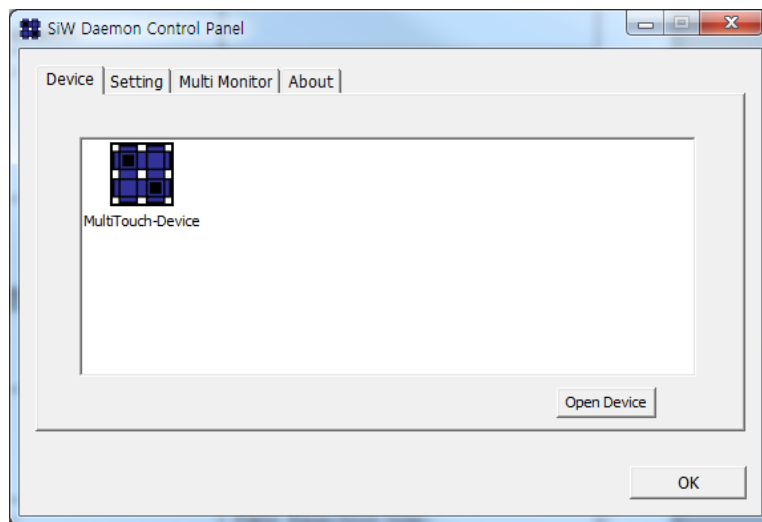


Figure 2. Device tap

The Device tab of the Control Panel would be showed by the connected device name and the icon..

Double-click the icon, and then select the icon by clicking the 'Open Device' button settings for the device window is PopUp.

3.1.2. Setting

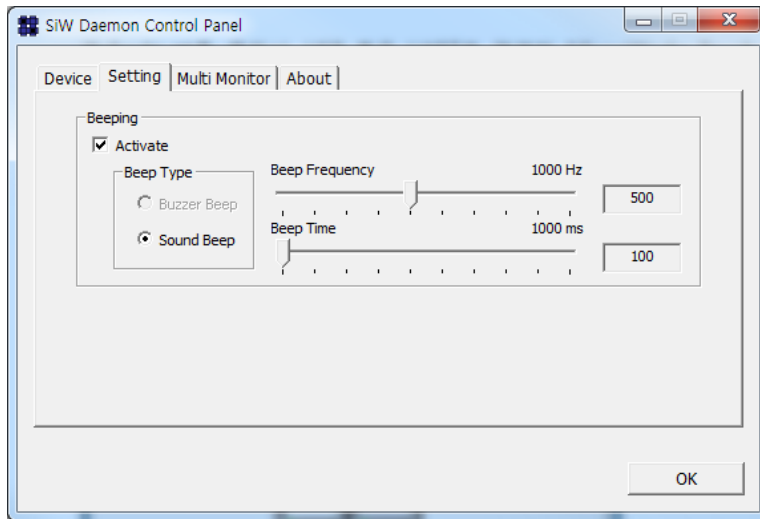


Figure 3. Setting tap

In the Setting tab of the Control Panel, you can change the system-related settings.

About the buzzer beep and sound beep, it is changeable.

- ③ Buzzer Beep: System is using the Built-in speaker
- ③ Sound Beep: Using the sound card
- ③ Beep Frequency: Pitch of Sound Beep (Buzzer Beep Only)
- ③ Beep Time: Duration of Sound Beep (Buzzer Beep Only)

3.1.3. Multi Monitor

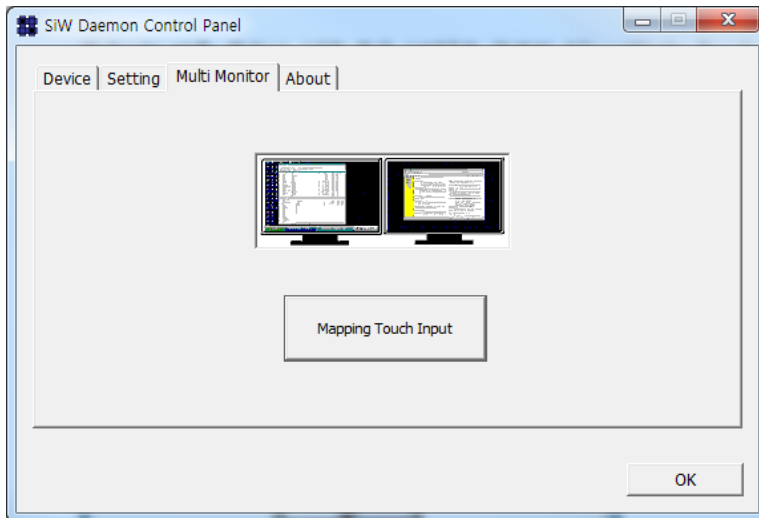
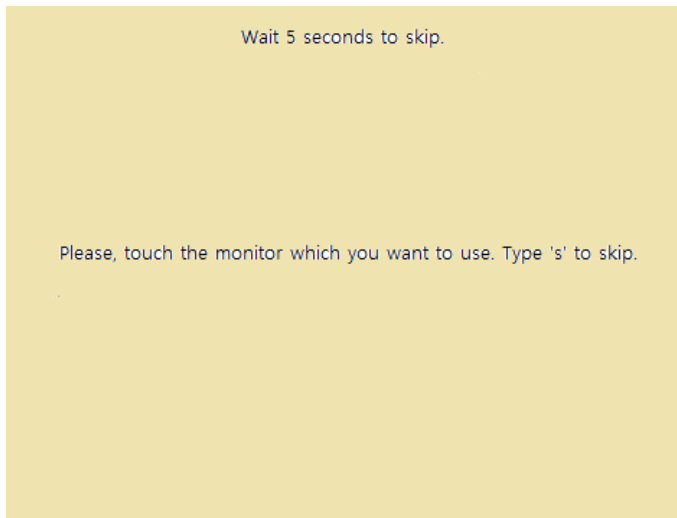


Figure 4. Multi Monitor tap

When using multi-monitor, the touch event of the connected touch screen could be assigned to any monitor



You may touch the screen on the target monitor you want to set touch event mapping. System will shutdown by itself a little while later then monitor displays the same screen. If you want to shutdown without any delay, please press "s" then it will jump to the next screen.

3.1.4. About

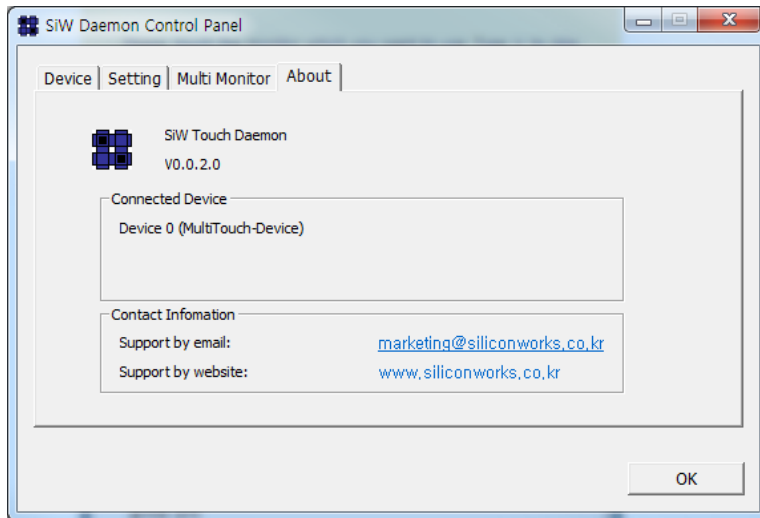


Figure 5. About tap

You can confirm the connected device name and version information of the SiWDaemonTM S / W Tool.

3.2 Device Settings Panel

With associated menu for detailed settings for a touch screen device that functions is as follows.

3.2.1. Calibration

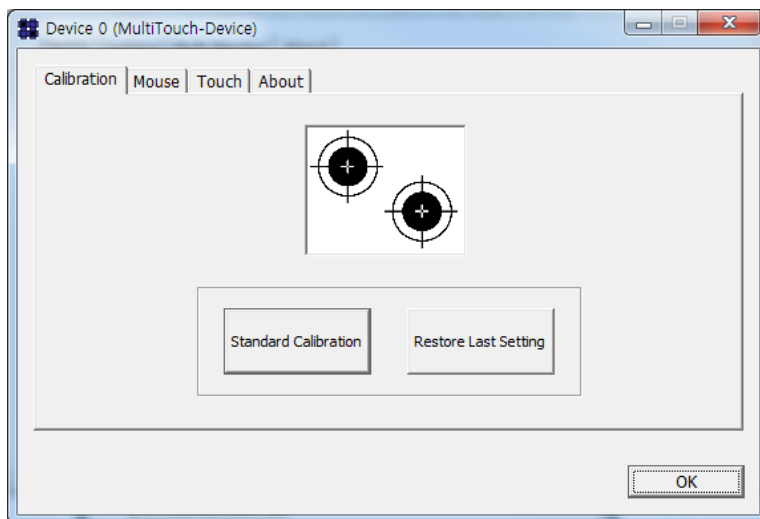
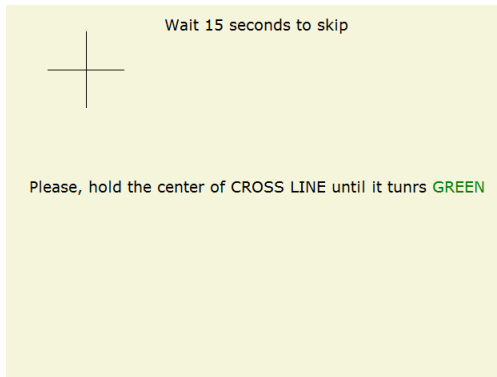


Figure 6. Calibration tap

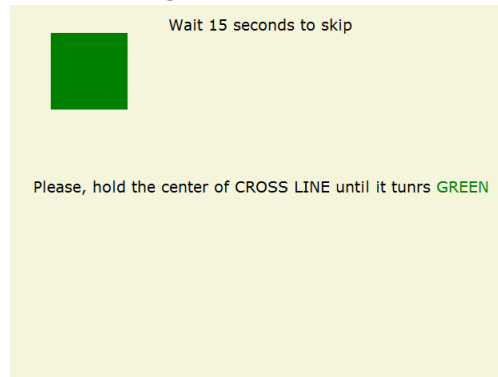
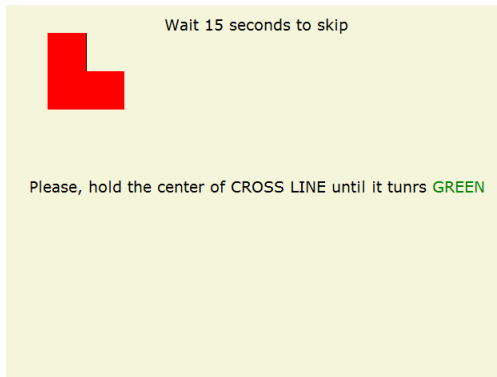
To correction the coordinate error between touch panel and monitors

- ③ Standard Calibration : Coordinates Display Calibration

③ Restore Last Setting : Recovery to the previous coordinate calibration



If you touch the center of the first calibration point and keep your finger there, it will show red and after it's finished, it will turn into green.



If you touch the center of the second calibration point and keep your finger there, it will show red and it will also turn into green when it's finished, indicating the coordinate calibration is complete.



3.2.2. Mouse

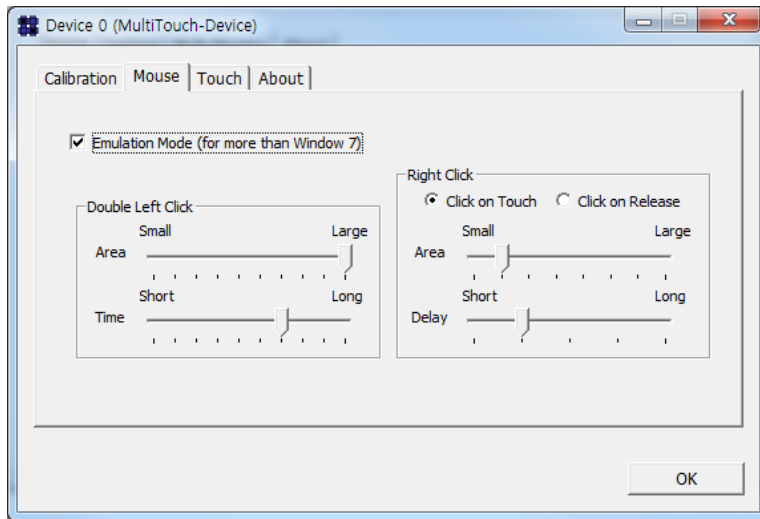


Figure 7. Mouse tap

Provides mouse-related settings menu.

- ③ Emulation Mode : Adjust the right mouse button on a touch screen menu. Window 7 or higher version operating systems support only
- ③ Double Left Click : Double click the left mouse button related adjustment
 - Area : Adjust the range between the first and second clicks for a double click
 - Time : Adjust the time interval between the first and second clicks for a double click
- ③ Right Click
 - Click on Touch : The right-click menu displayed in touch - Click on Release : when touch the right-click menu displayed, then touch released
 - Area : Adjust the right-click menu can be displayed touch area
(If the area smaller the right side of the menu is difficult to loading)
 - Delay : When the touch events displays, the time of right-click menu delay time adjustment

3.2.3. Touch

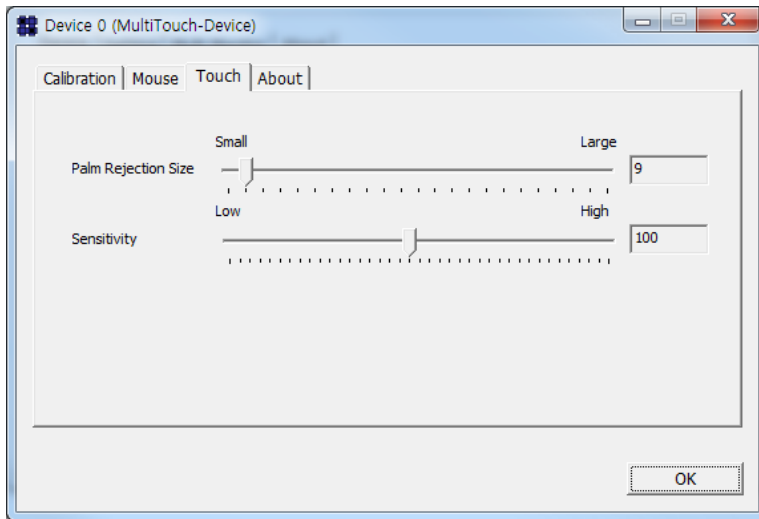


Figure 8. Touch tap

Provides a touch-related settings menu.

- ③ Palm Rejection Size : The size of the area size by hand to be excluded from the touch event
- ③ Sensitivity : Touch Sensitivity

3.2.4. About

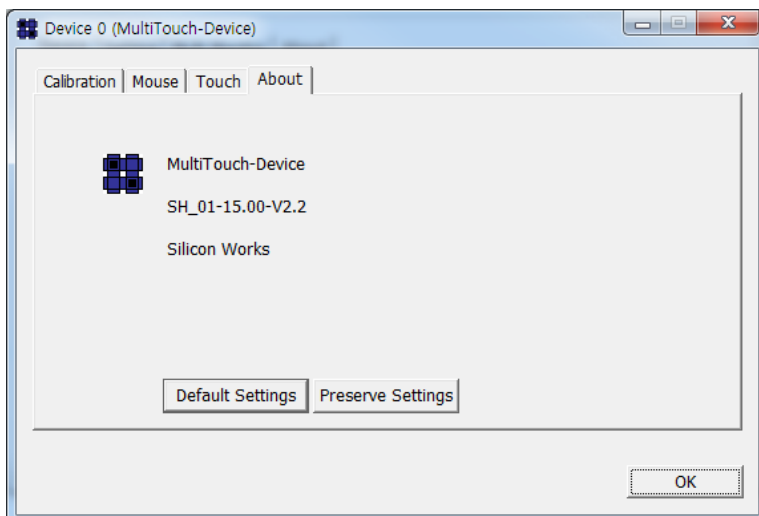


Figure 9. About tap

To display detailed information for an associated touch screen devices.

Touch screen device name, device firmware, device manufacturers name is displayed.

- ③ Default Settings : Restore the current settings in the firmware, the initial value.
- ③ Preserve Settings : Stores the current settings in non-volatile memory
The hard disk on the system need to be changed
then current setting is preserved.

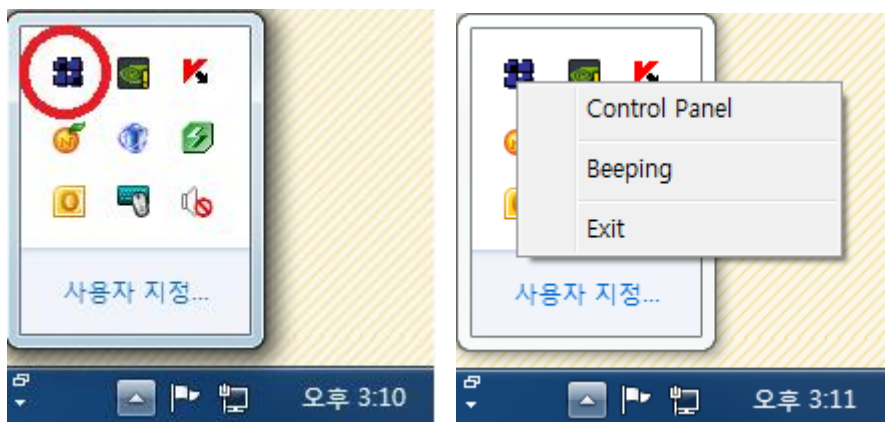
3.3 Tray Menu

Automatically at system startup drive is registered when running the Tool Tray menu.



If you double-click then the Control Panel icon would be PopUp.

The context menu is displayed when you click the right mouse button on the icon.



- ③ Control Panel : Display the Control Panel
- ③ Beeping : Beep sound occurrence (when checking it, the Beep sound would be generated)
- ③ Exit : Daemon Tool termination