

SAM4s ELLIX 20

Windows Driver Install Manual

1. Foreword	1
2. OS Environment	1
3. Uninstall lower version of printer driver existed	2
3.1 SHC SAM4S ELLIX 20	2
4. Install/Uninstall New SAM4s ELLIX 20	5
4.1 Automatic Installation	5
4.2 Automatic Un-installation	8
4.3 Setting SAM4s ELLIX 20 with Parallel Port (LPTn:)	12
4.3.1 Windows 2000	12
4.3.2 Windows XP	13
4.4 Setting SAM4s ELLIX 20 with USB Port	20
4.4.1 Windows 2000	20
4.4.2 Windows XP	23
4.4.3 Windows Vista	31
4.4.4 When 'Plug and Play' Message does not popup.	35
5. Using SAM4s ELLIX 20 in Windows Vista	39
5.1 UAC (User Access Control)	39
5.2 Turn off UAC and Set Baud rate	39
After uncheck the check-button like upper picture, push OK.	40
5.3 Turn on UAC	42

1.Foreword

It is this document that is a manual about installing SAM4s ELLIX 20 Windows printer driver. Application can print with SAM4s ELLIX 20 Windows printer driver.

2.OS Environment

SAM4s ELLIX 20 Windows printer driver can be supported below OS.

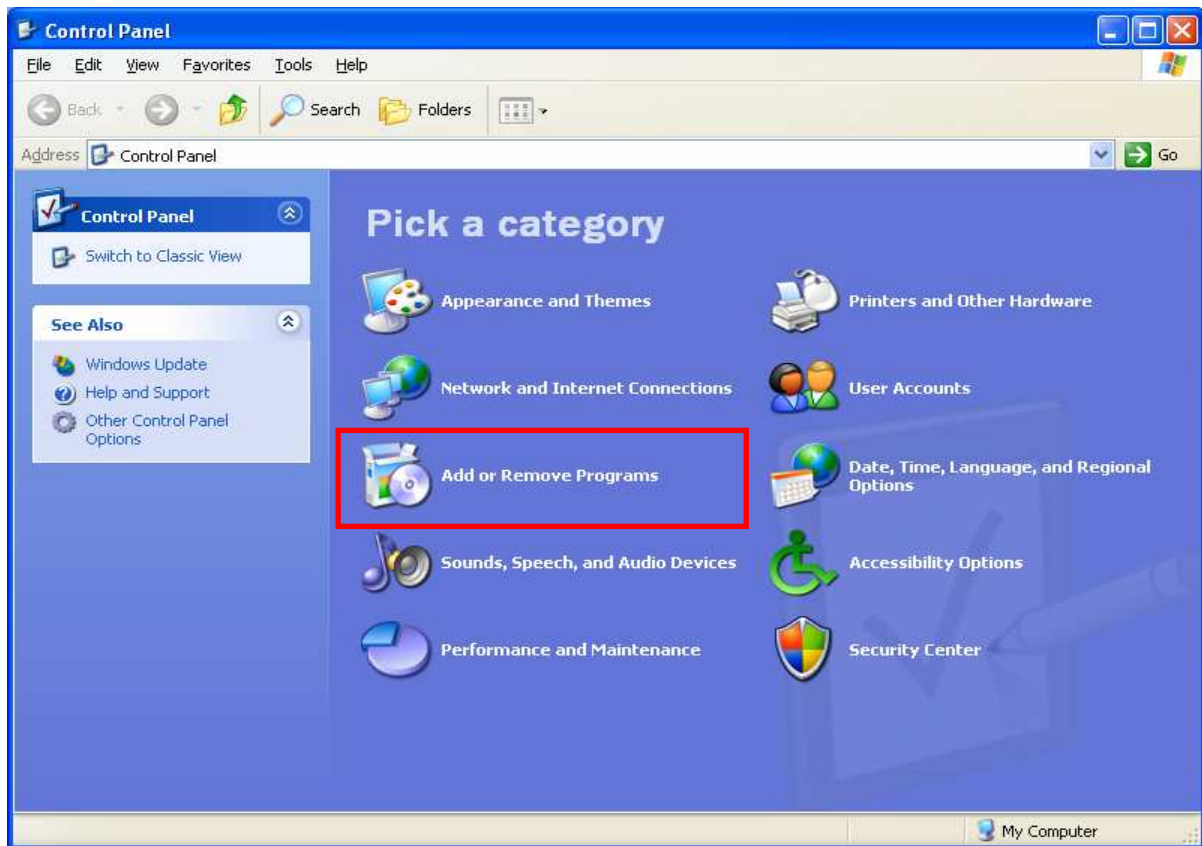
- Microsoft Windows 2000
- Microsoft Windows XP
- Microsoft Windows 2003 Server
- Microsoft Windows Vista (upper version of _V4.00)

3. Uninstall lower version of printer driver existed

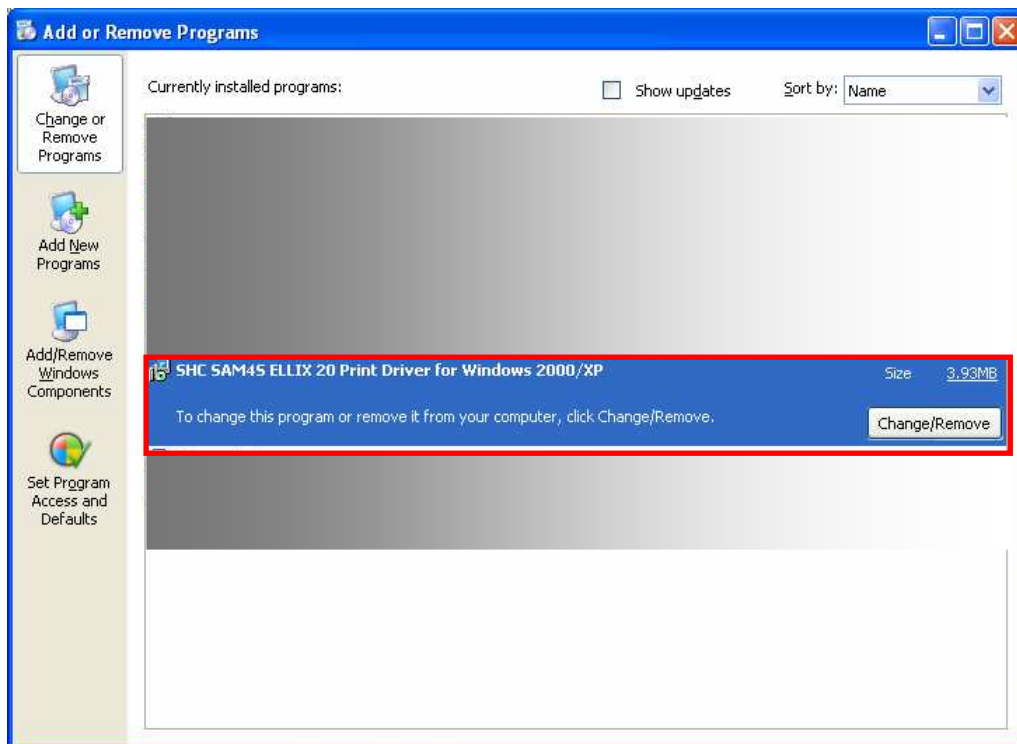
3.1 SHC SAM4S ELLIX 20

In case of Windows 2000/XP/2003, when a new “SAM4s ELLIX 20” Windows Driver is installed, it is recommended uninstalling old version of printer driver, “SHC SAM4S ELLIX 20” Windows Driver. Below are steps about un-installation. (SHC SAM4S ELLIX 20 can not be supported in Windows Vista.)

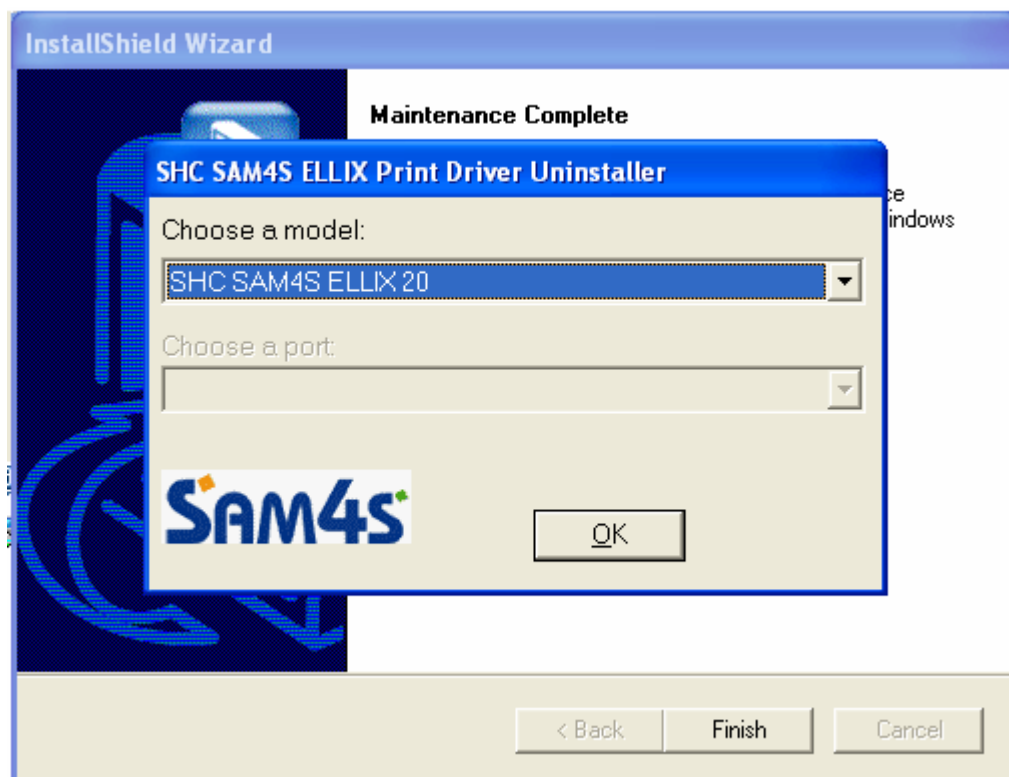
CF) The auto-install/uninstall program of SHC SAM4S ELLIX 20 also can be useful.



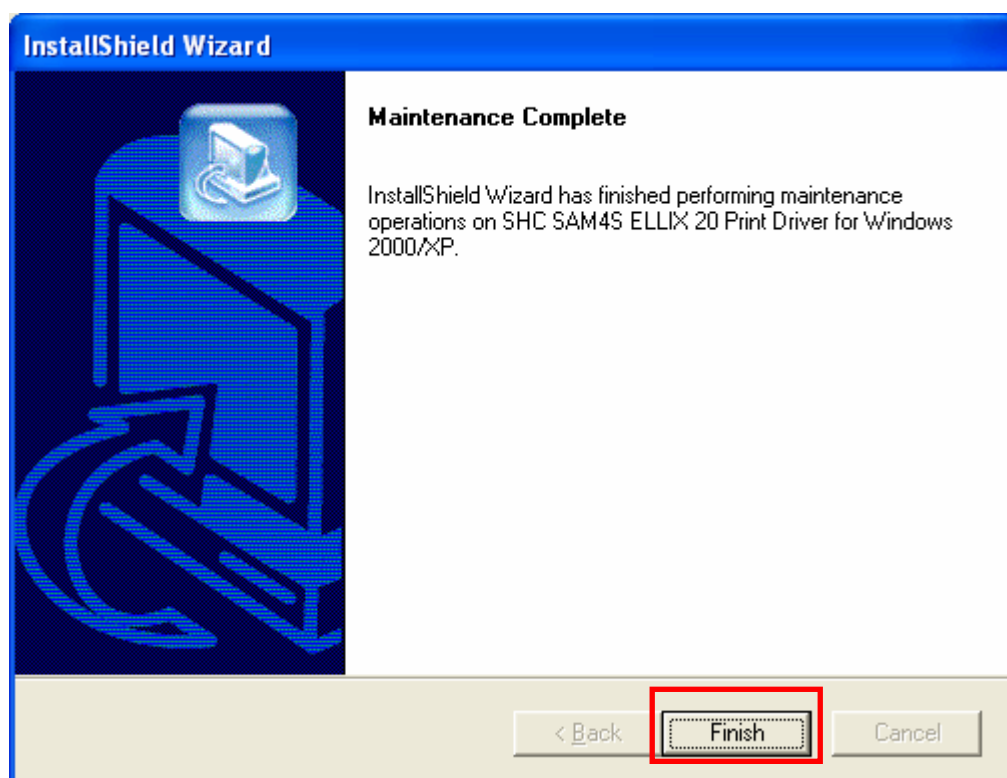
Select 'Add or Remove Programs' on Control Panel.



After selecting SHC SAM4S ELLIX 20 Printer Driver for Windows 2000/XP, push the button of Change/Remove.



Uninstalling program executes automatically.

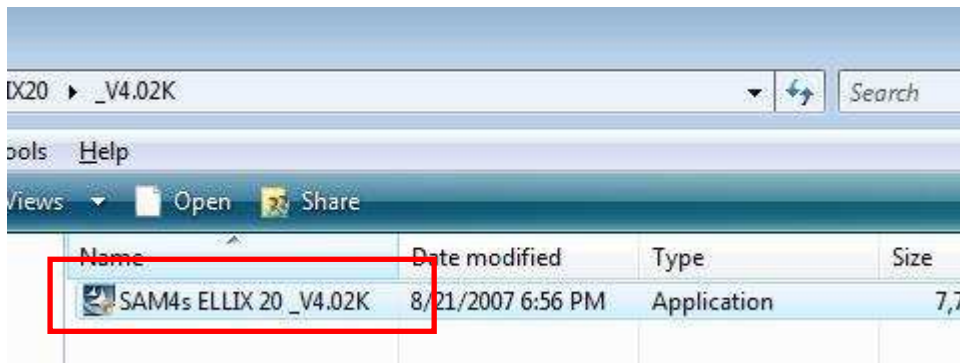


Do uninstall progress by program's guides.

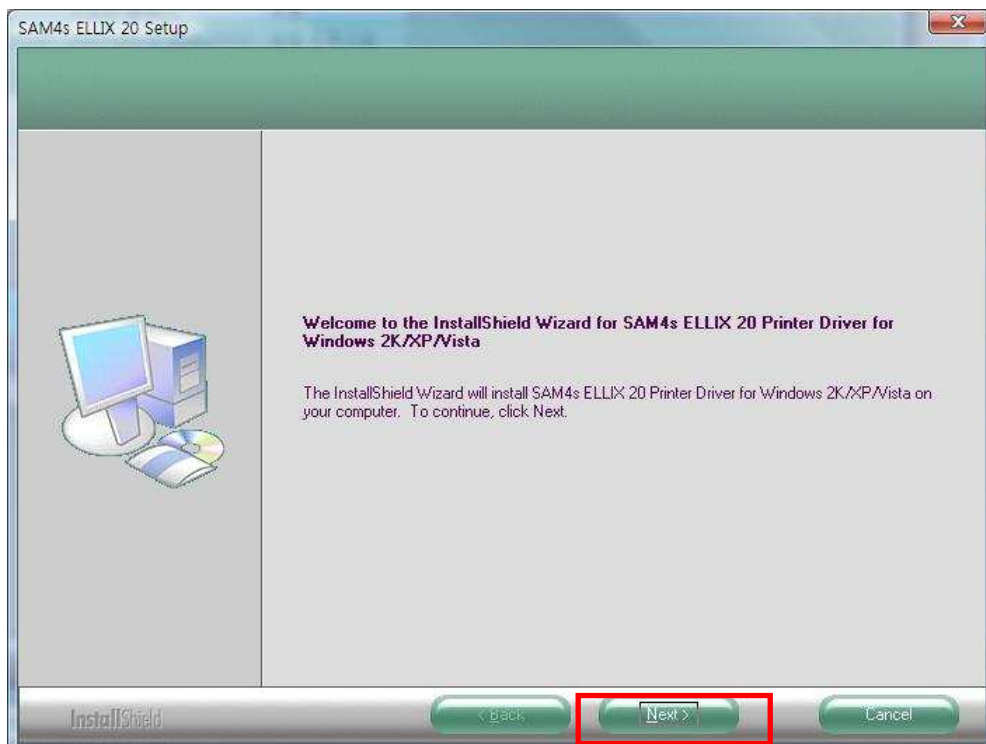
4. Install/Uninstall New SAM4s ELLIX 20

4.1 Automatic Installation

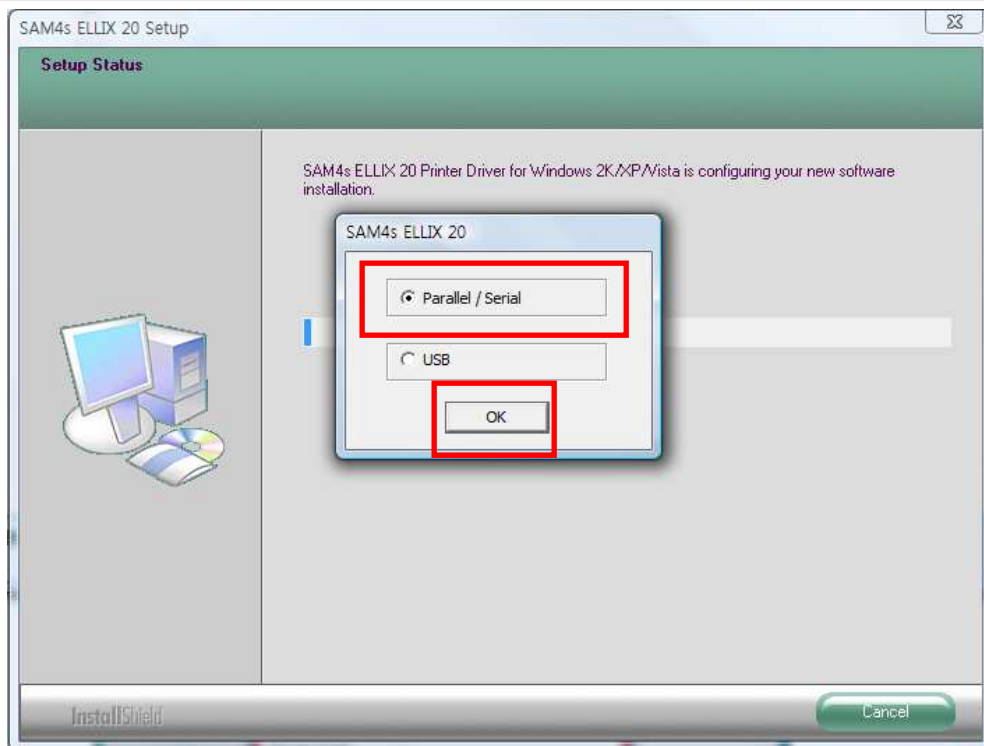
SAM4s ELLIX 20 Windows Driver is recommended using auto install/uninstall program. Below is its usage. Like SHC SAM4S ELLIX 20 (earlier version), if need to install driver with Parallel (LPTn:) or Serial (COMn:), please follow progress below.



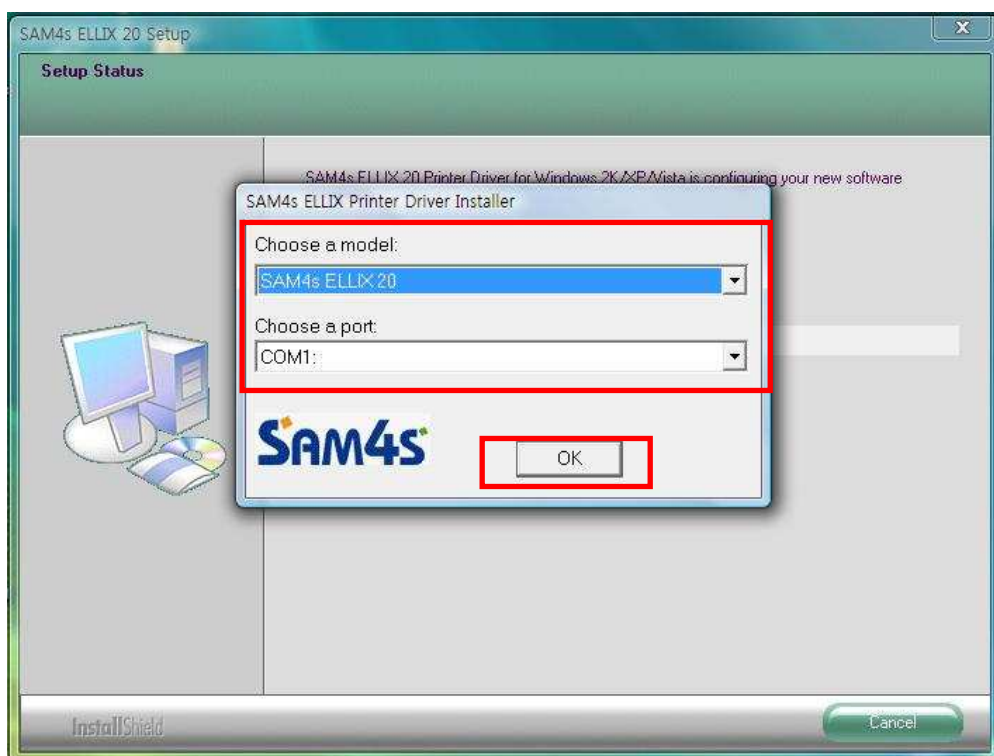
Execute the auto install/uninstall program.



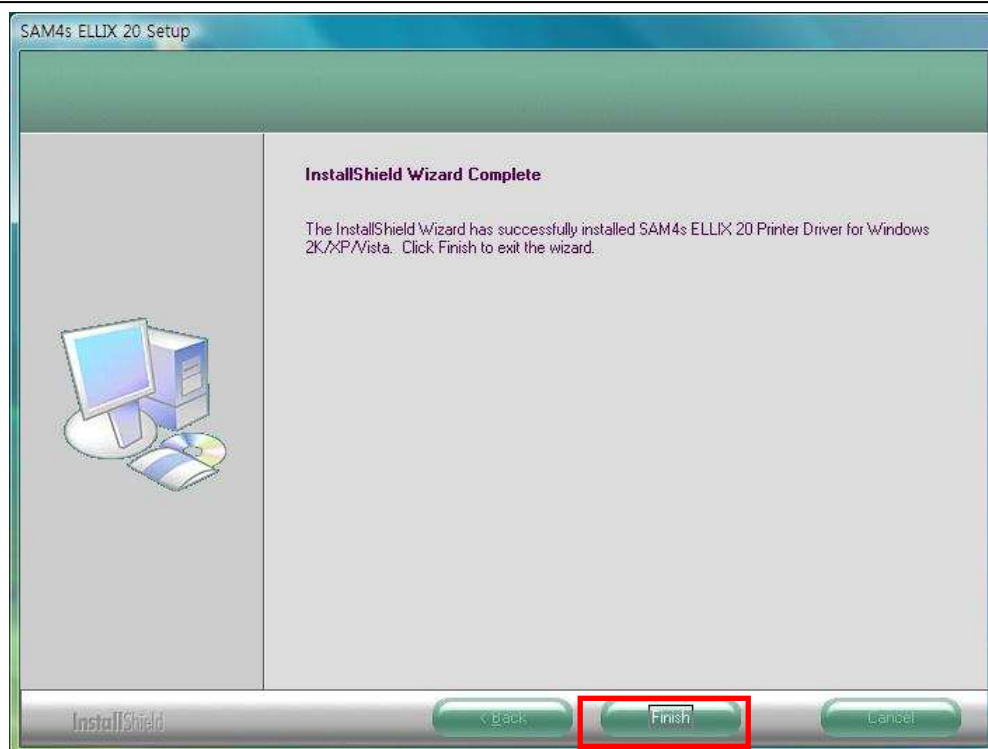
Push the Next.



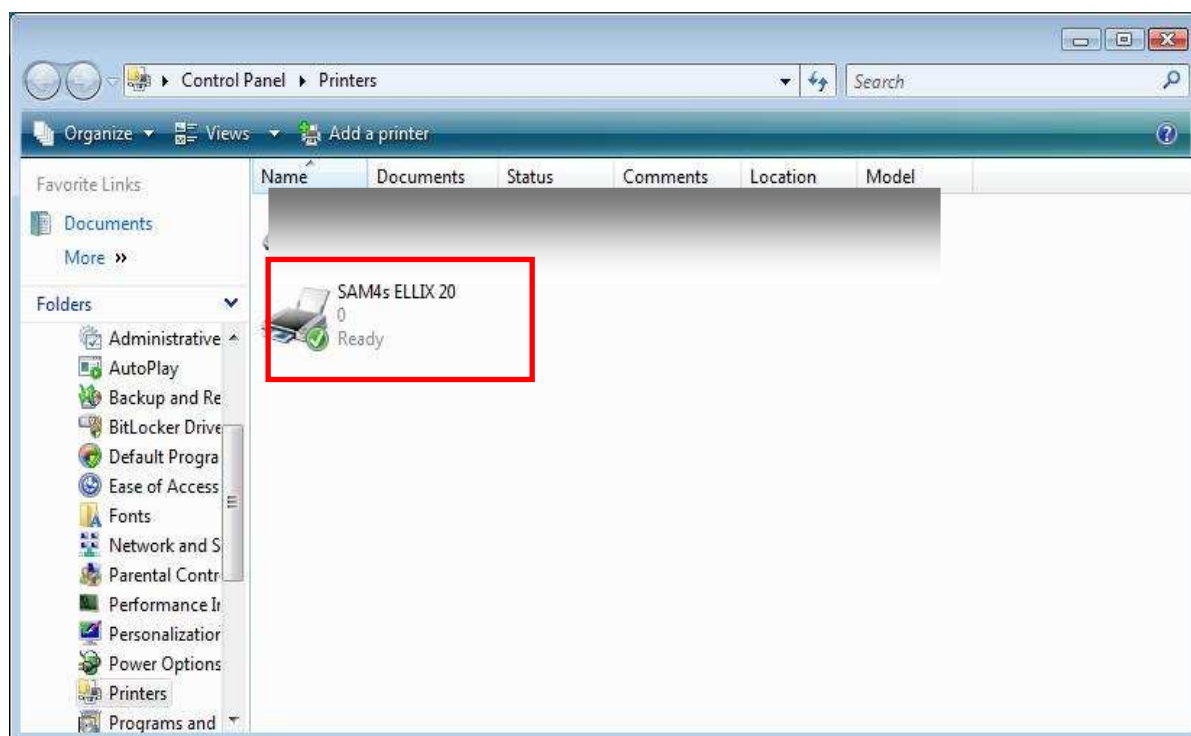
Select 'Parallel / Serial / USB-I' and press OK.



After selecting model and port you want to, (Model is SAM4s ELLIX 20 here), push OK button.



After install progress is done automatically, push the button of Finish.

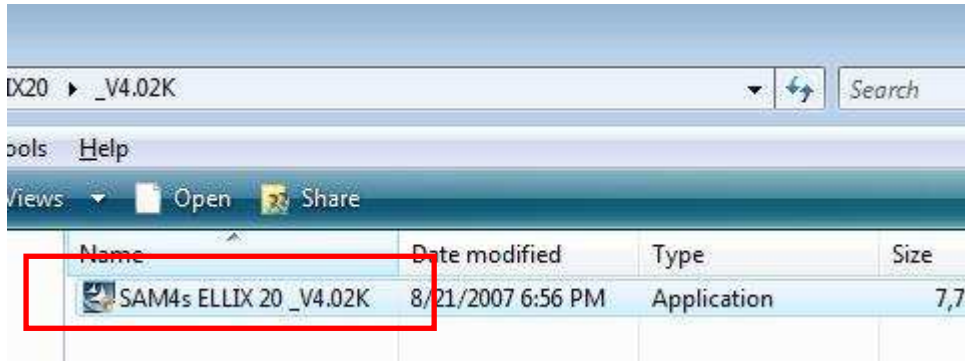


Check the printer folder in Control Panel for normal installation.

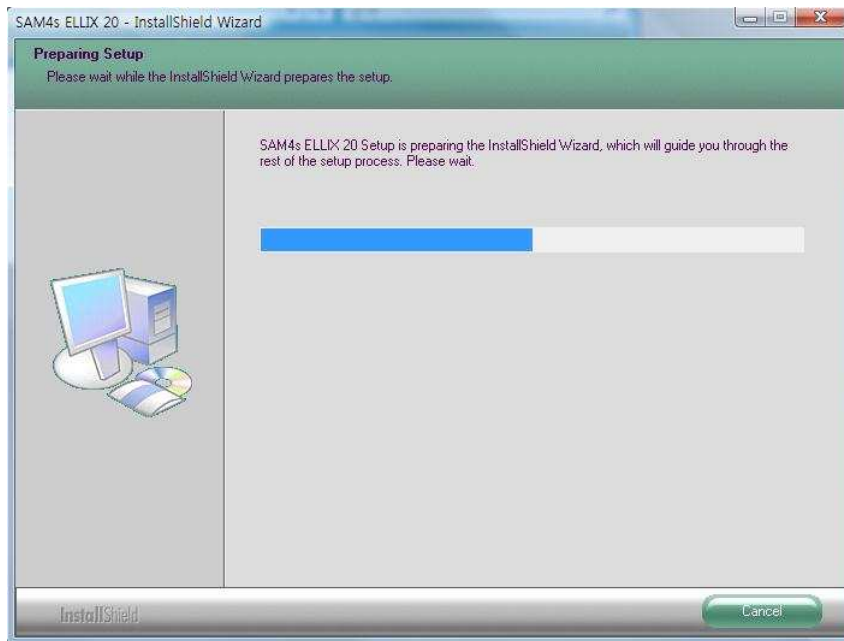
4.2 Automatic Un-installation

SAM4s ELLIX 20 Windows Driver is recommended using auto install/uninstall program. Below is its usage.

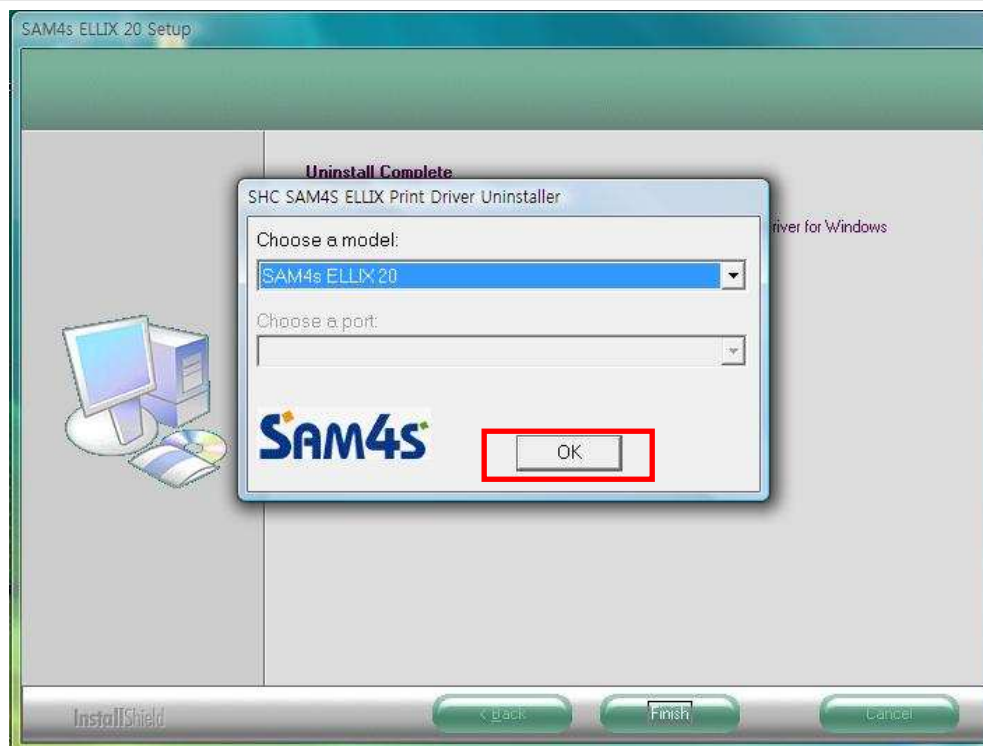
4.2.1 Using auto install/uninstall program



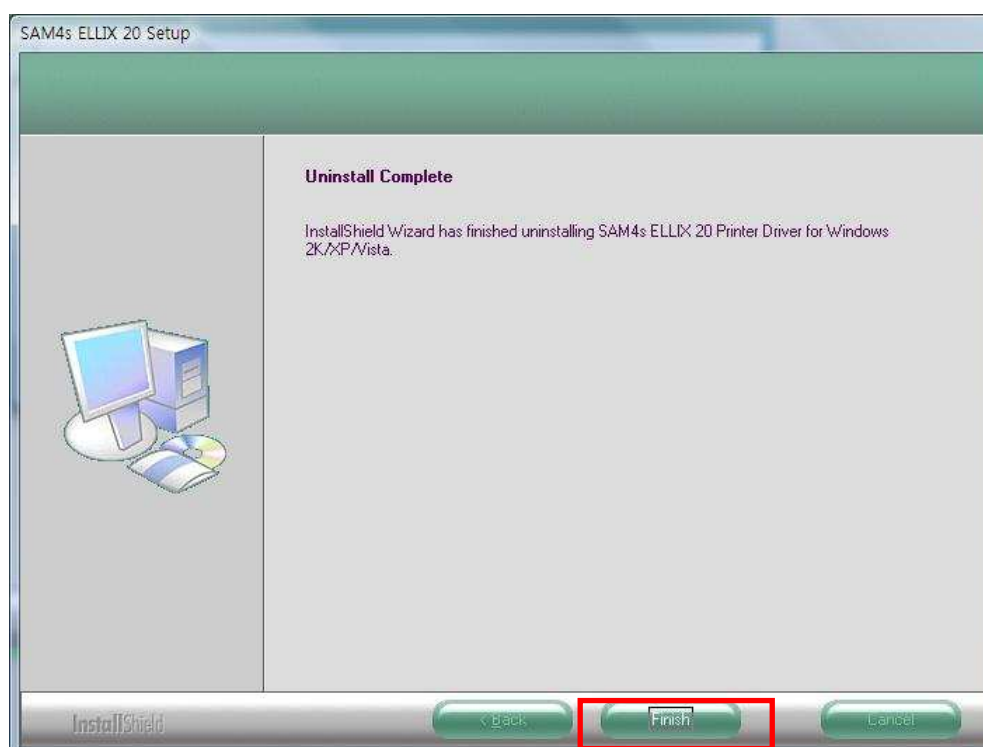
Execute the program auto install/uninstall which is the same program which it was used installing.



The program will do uninstall automatically.

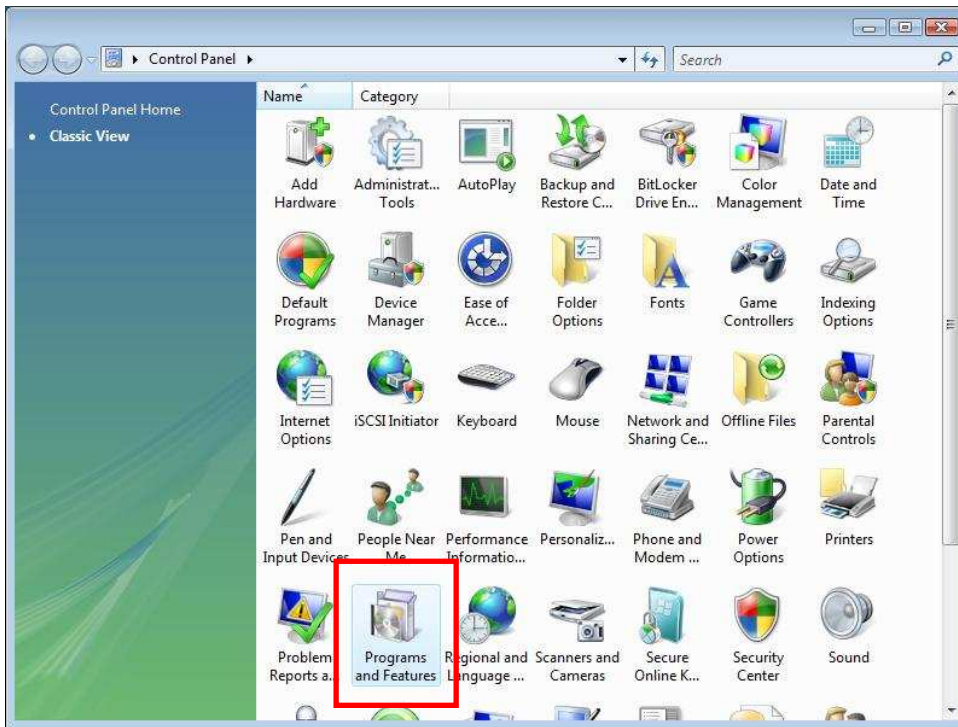


As push OK button, uninstall the SAM4s ELLIX 20 printer driver.

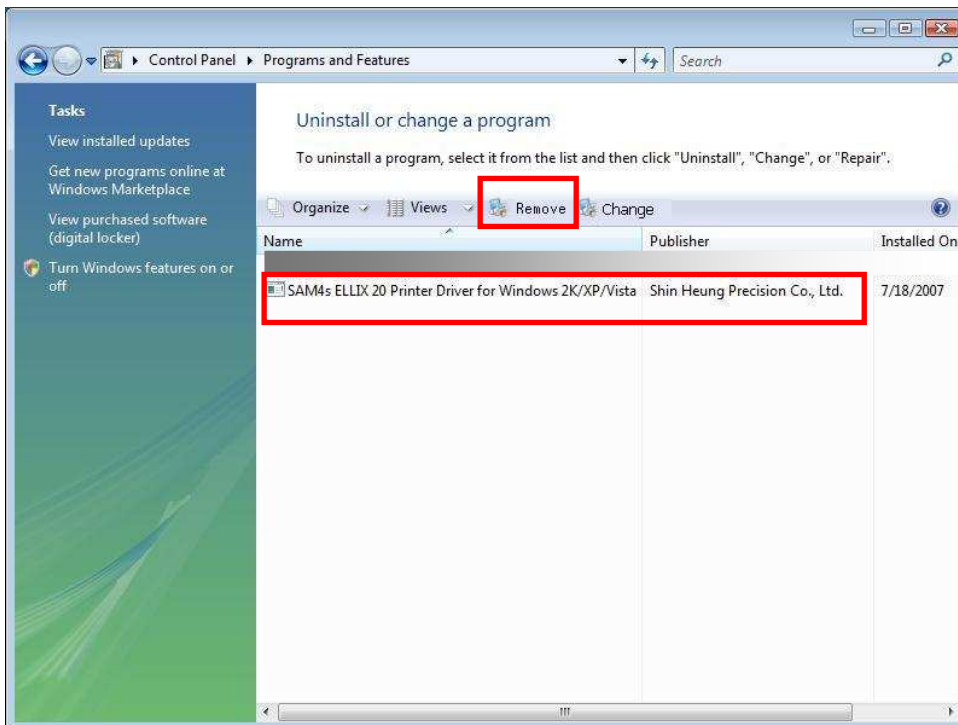


Then push the Finish button, so uninstall progress will complete.

4.2.2 Using Control Panel

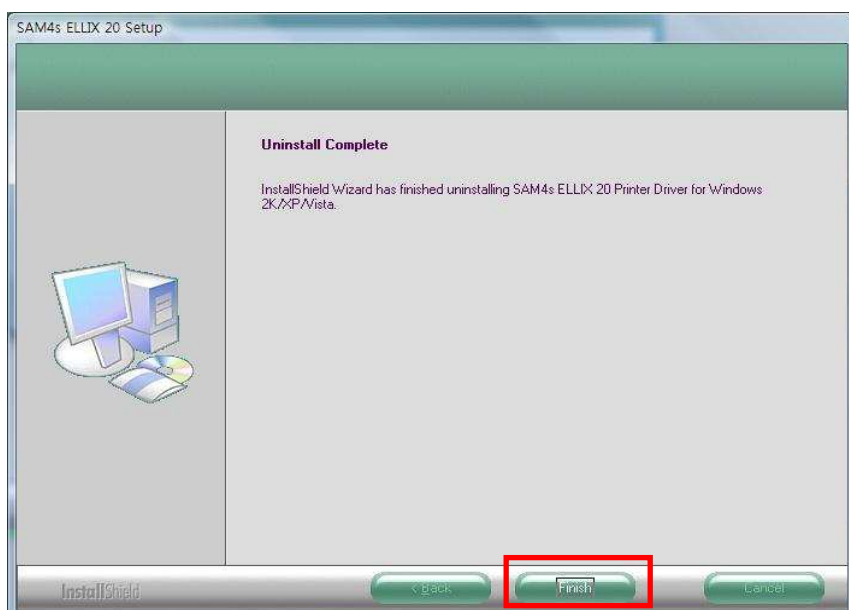
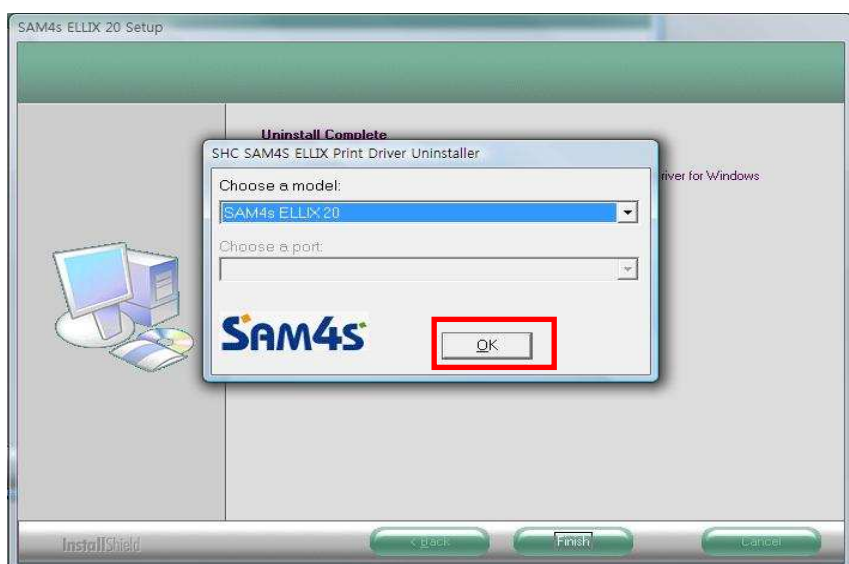
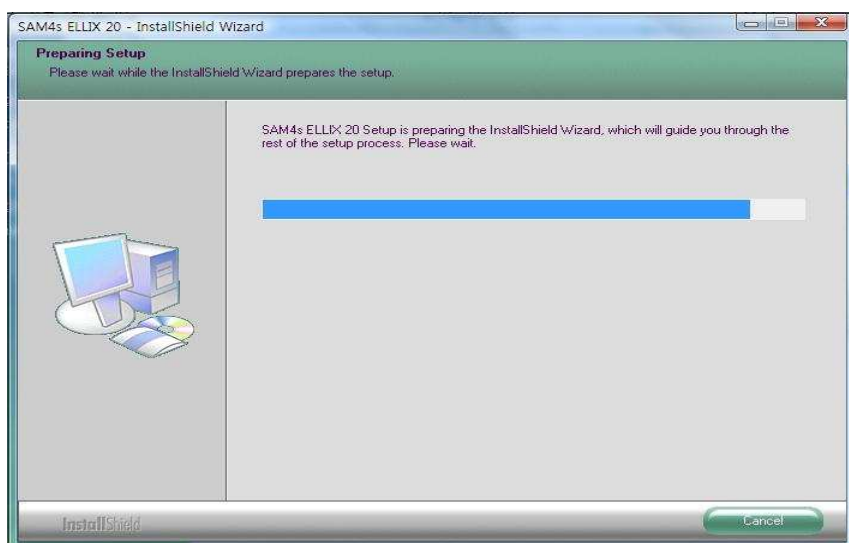


Open Control Panel folder and then select 'Program and Features'.



In Lists, select SAM4s ELLIX 20 Printer Driver for Windows 2K/XP/Vista and select Remove.

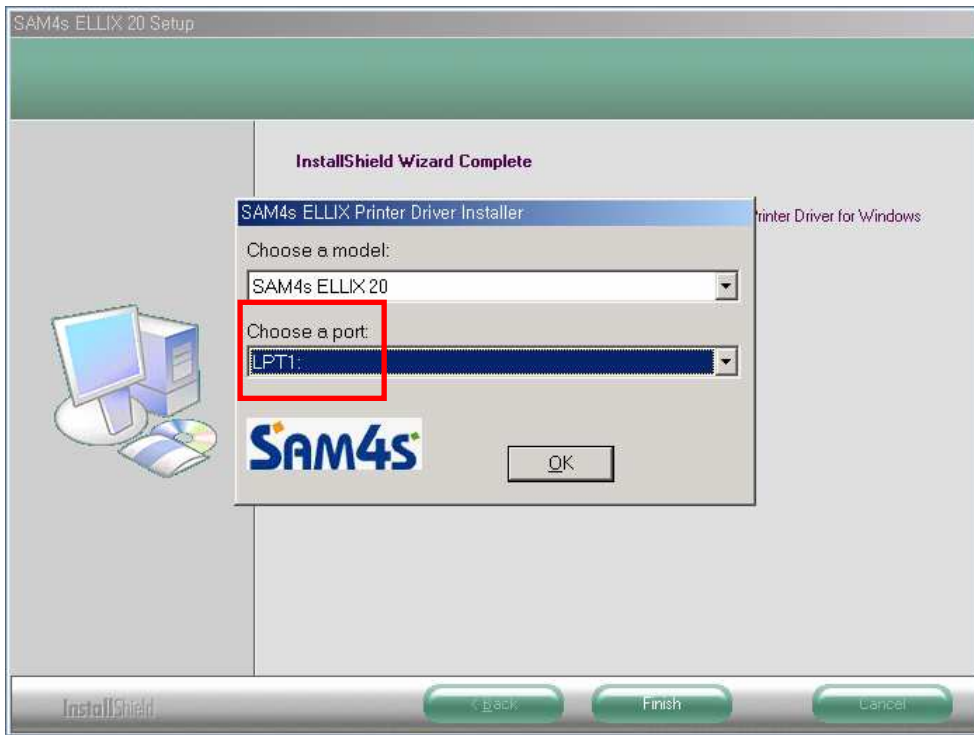
Below is the same with explanation in 4.2.1.



4.3 Setting SAM4s ELLIX 20 with Parallel Port (LPTn:)

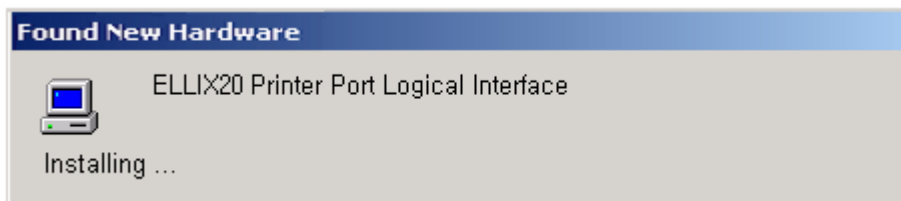
For connecting SAM4s ELLIX 20 to Parallel Port, ELLIX 20 printer should be connected with Parallel Port cable to LPT1: of PC. If SAM4s ELLIX 20 is installed as LPT1:, turn on printer's power or restart OS system. (This progress is only needed once when SAM4s ELLIX 20 will be installed for the first time.) Follow ways below to install each of OS.

4.3.1 Windows 2000



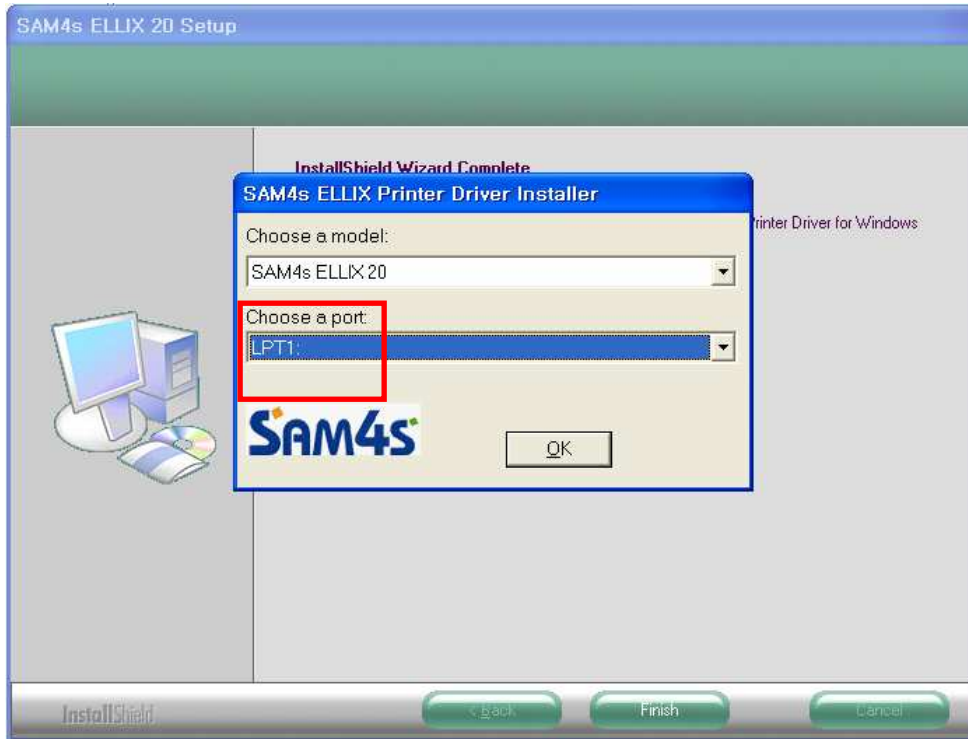
Ps) Installing steps remained are omitted.

Restart OS system after installing Windows Driver and then you will get the message like below.



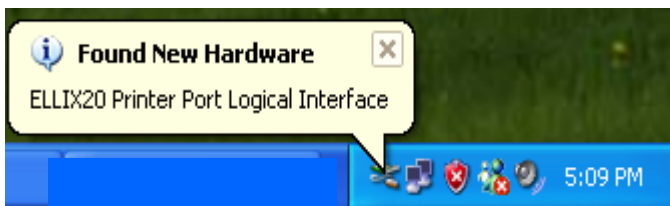
You can use SAM4s ELLIX 20 after this message will be gone automatically.

4.3.2 Windows XP

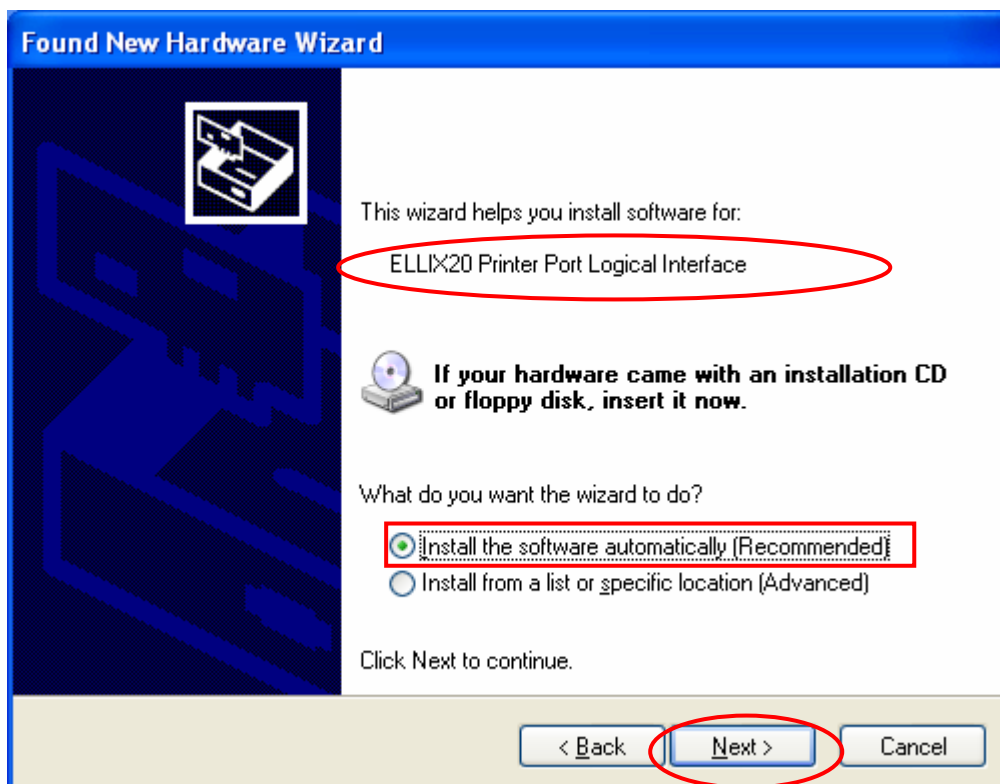
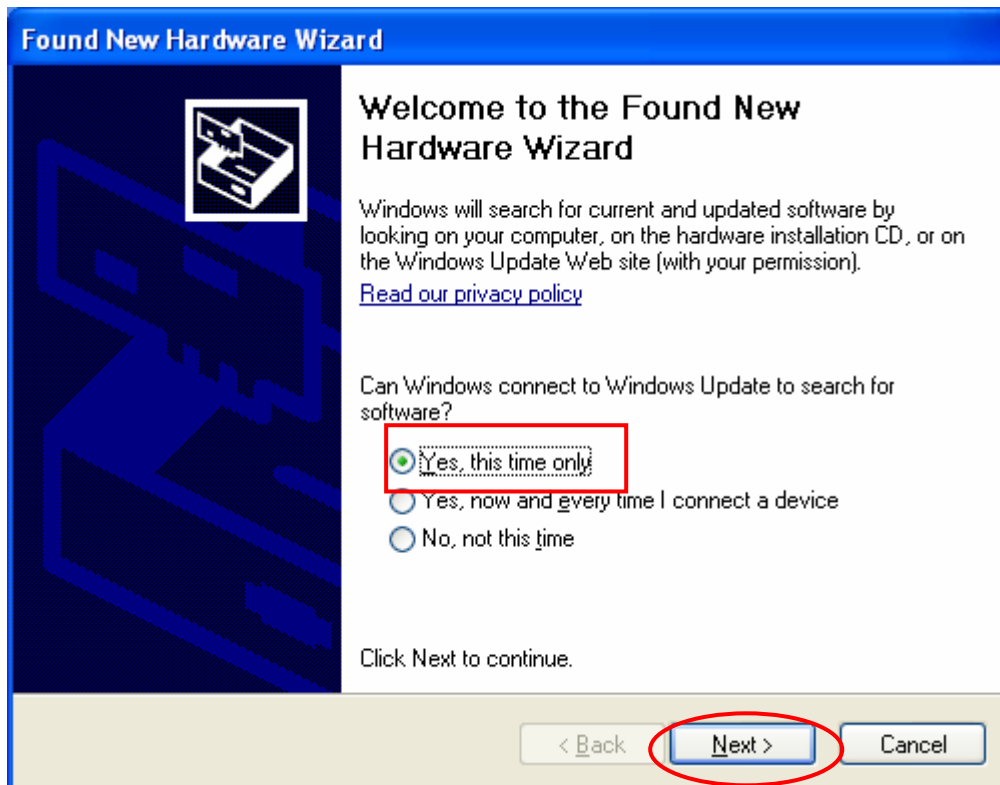


Ps) Installing steps remained are omitted.

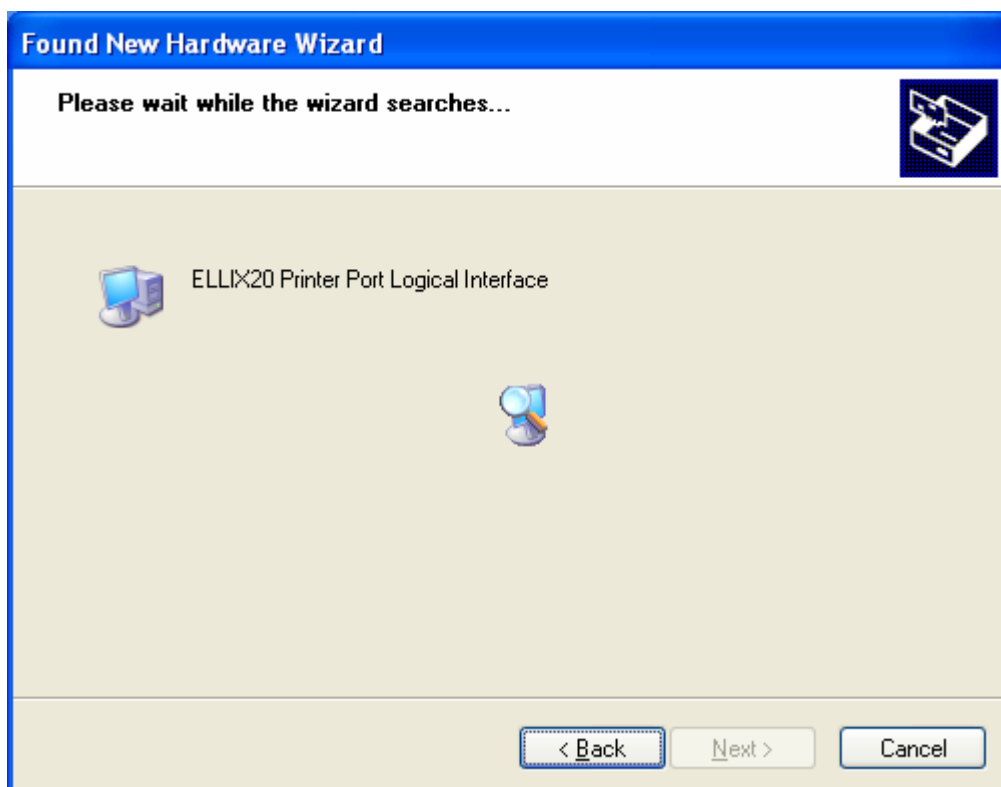
Restart OS system after installing Windows Driver and then you will get the message like below.



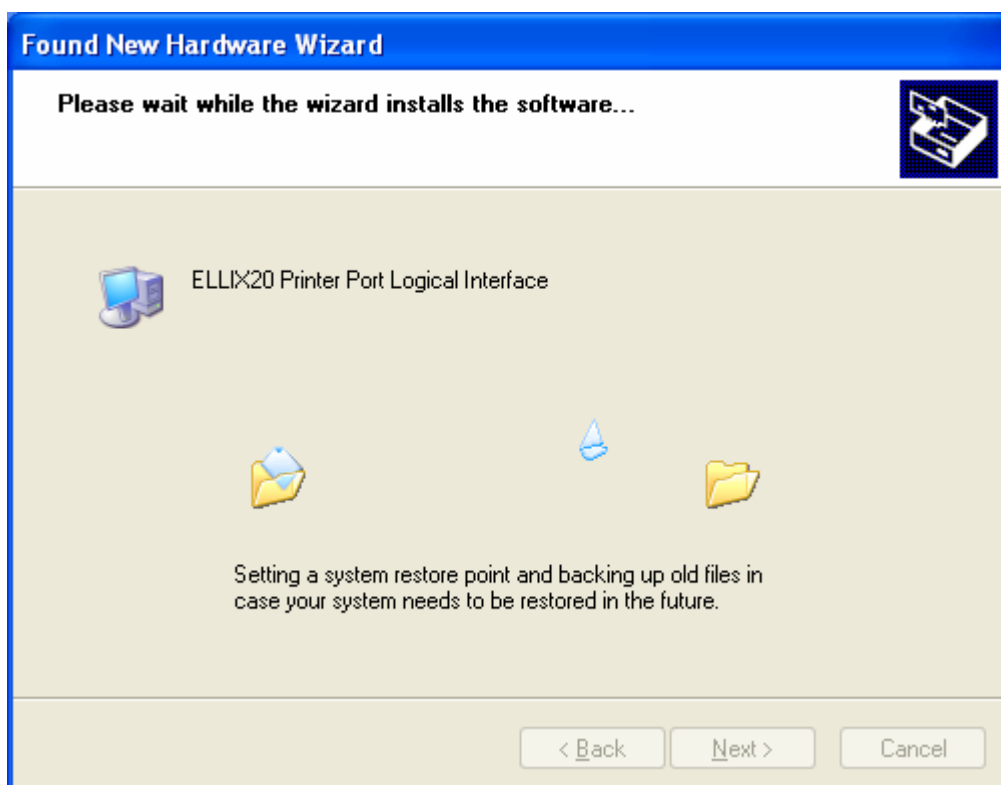
'Found New Hardware Wizard' is popped up automatically.



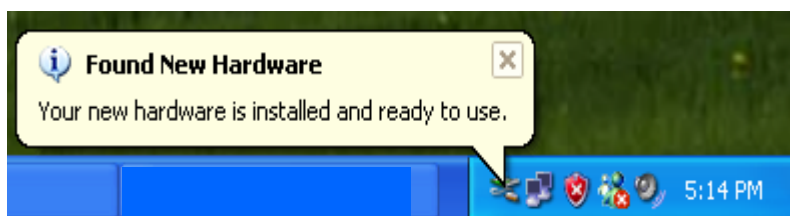
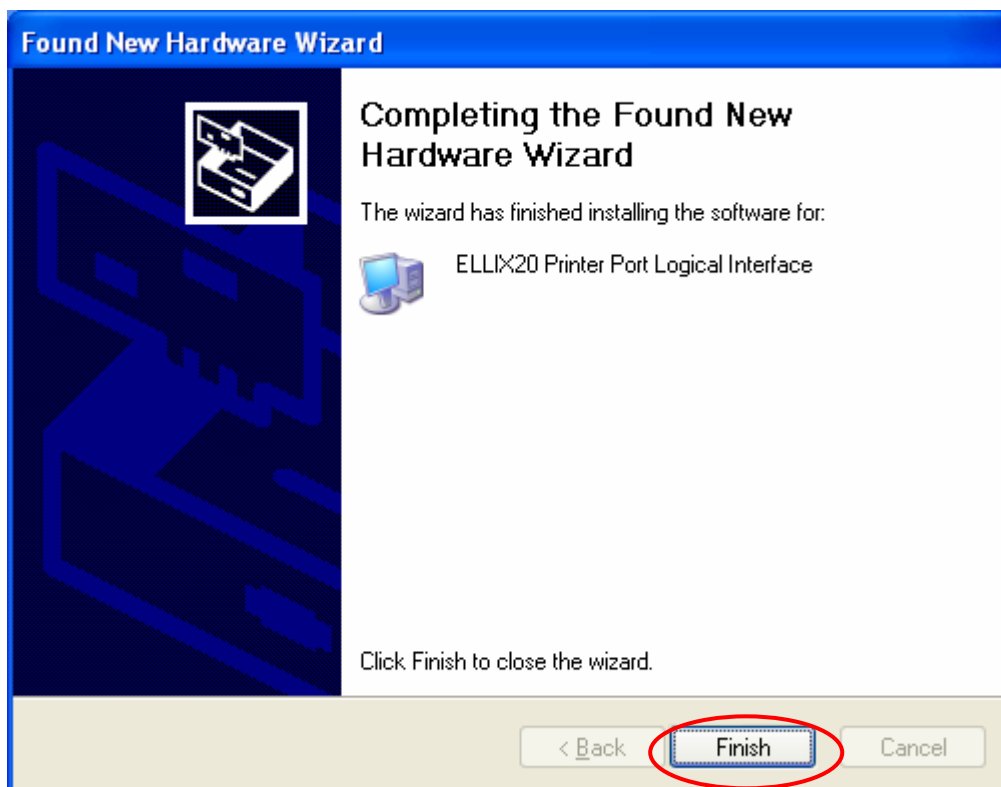
When 'Found New Hardware Wizard' is popped up, check a string, 'ELLIX20 Printer Port Logical Interface' and press Next. OS will search a proper driver automatically.



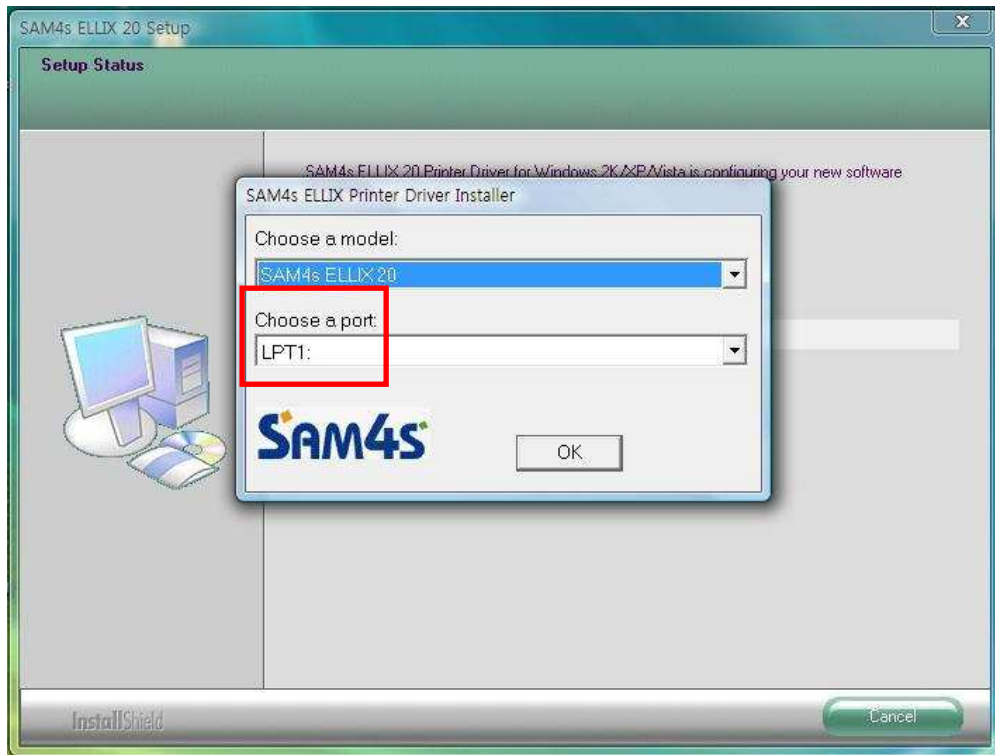
If OS searches a matched driver, it will be installed automatically.



Press Finish to complete install steps.

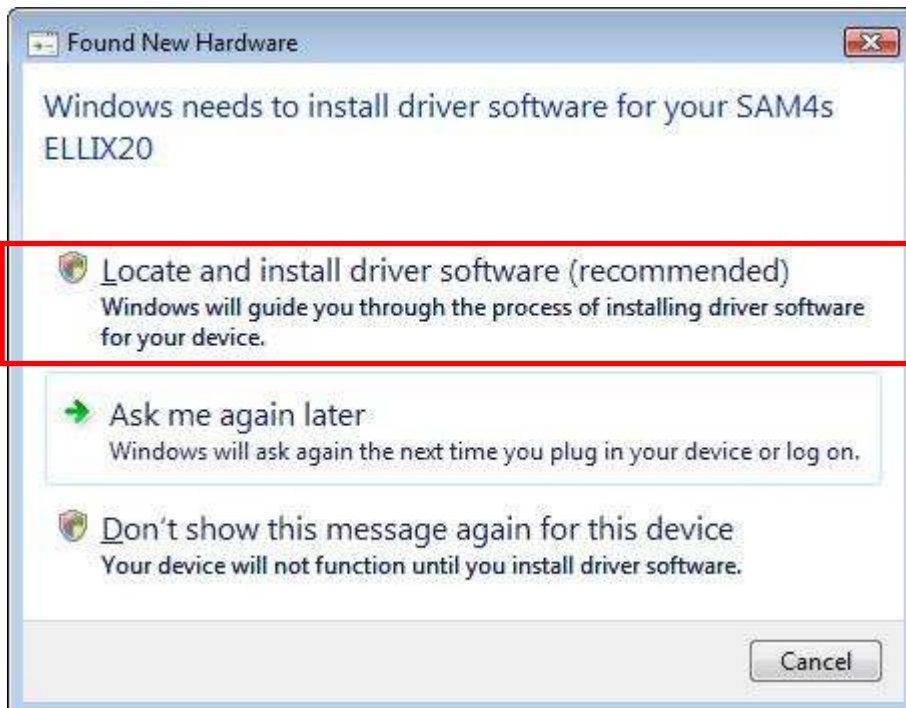


4.3.3 Windows Vista

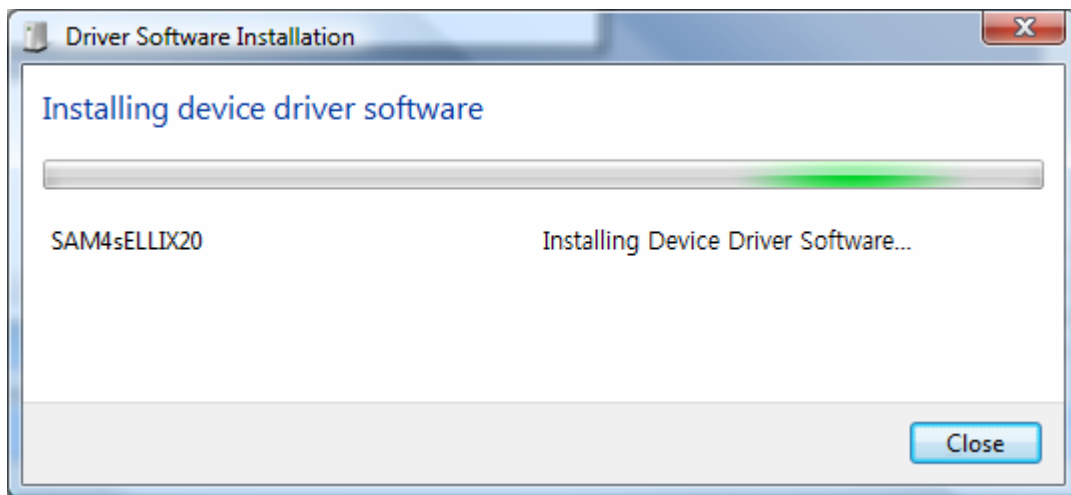


Ps) Installing steps remained are omitted.

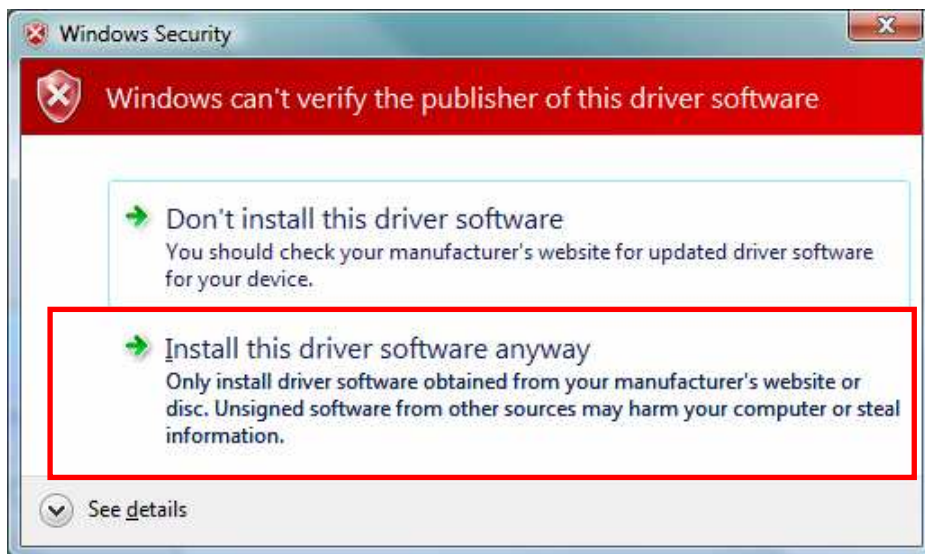
Restart OS system after installing Windows Driver and then you will get the message like below.



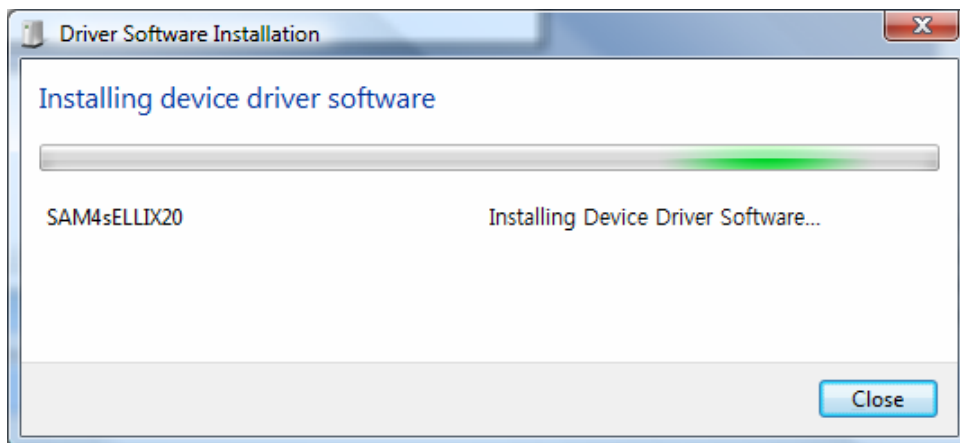
Select 'Locate and install driver software (recommended)'.



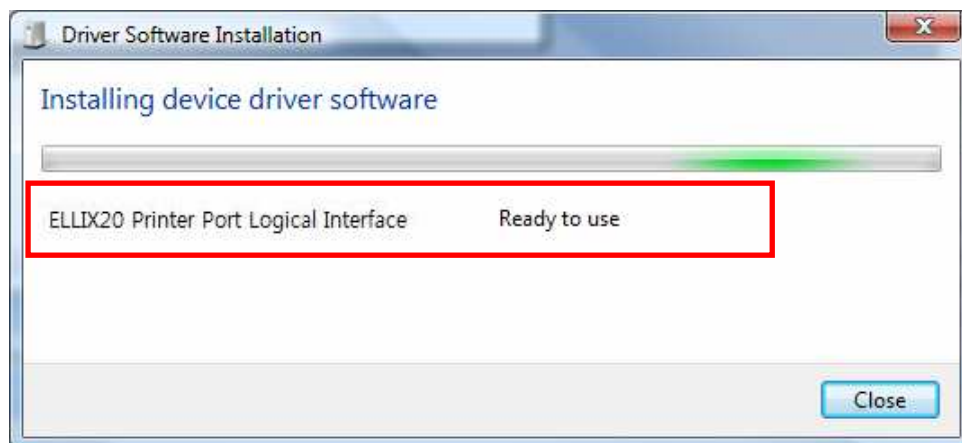
Windows Vista will search a matching device automatically like upper shot.



Select 'Install this driver software anyway'.



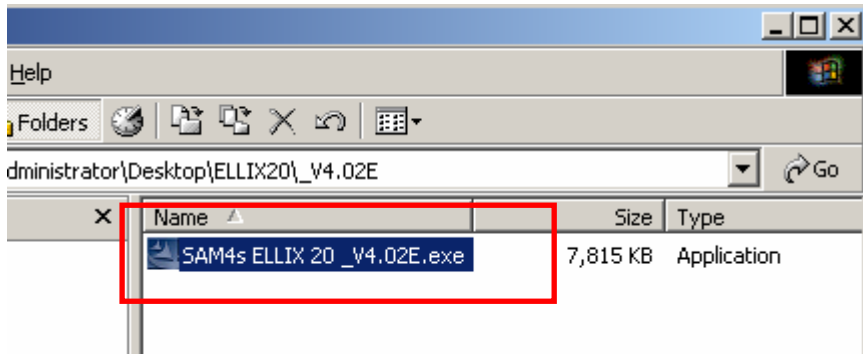
After searching device once more,



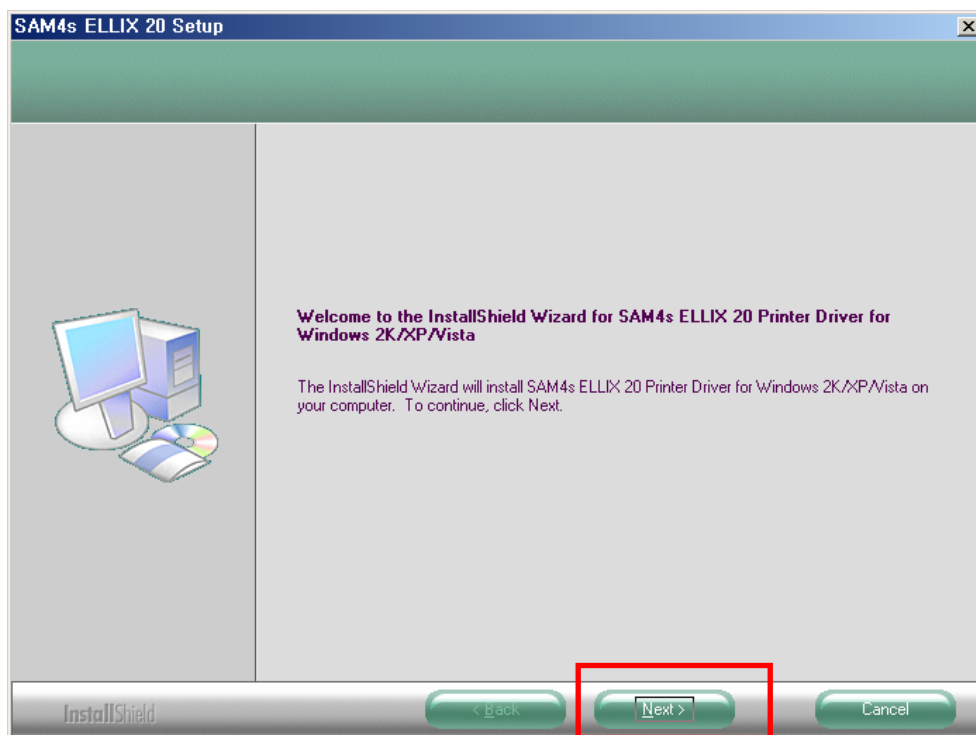
You may check the device installation.

4.4 Setting SAM4s ELLIX 20 with USB Port

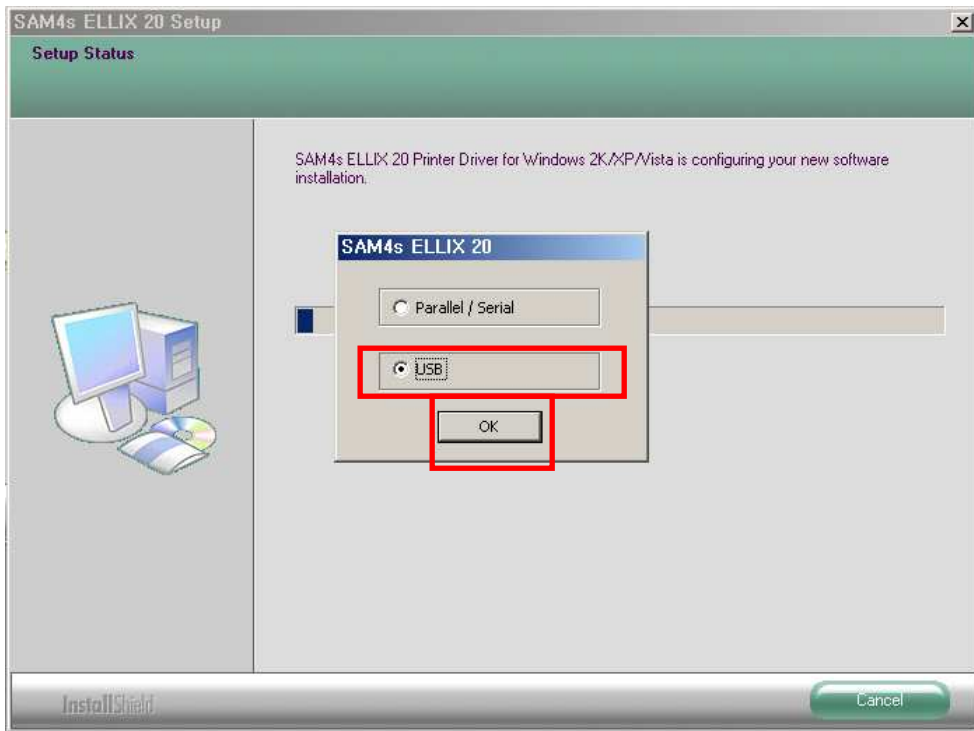
4.4.1 Windows 2000



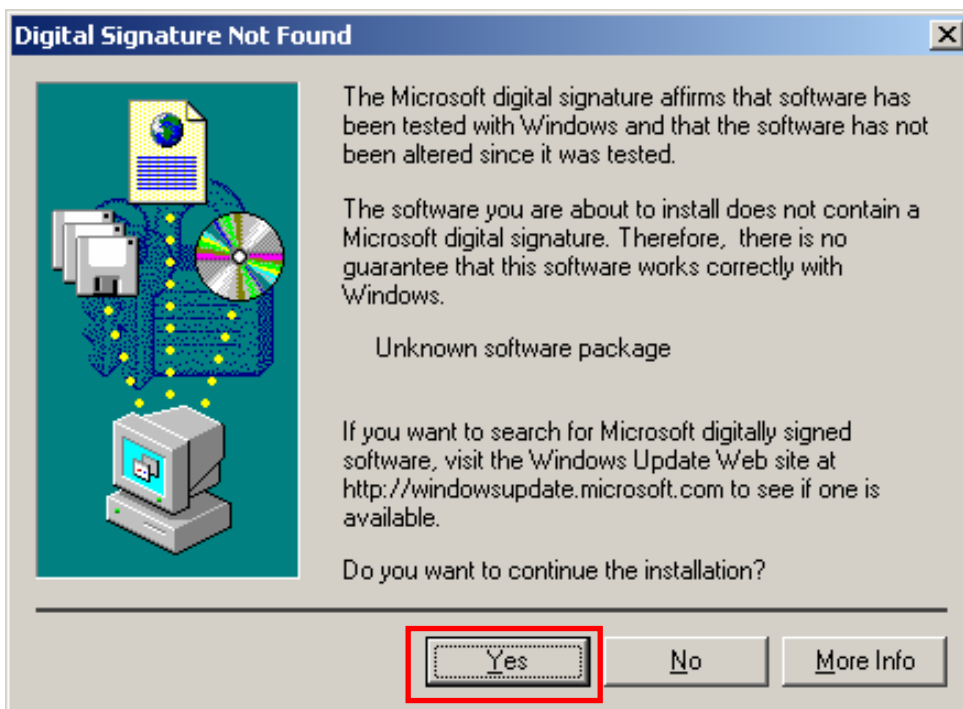
Execute the auto install/uninstall program.



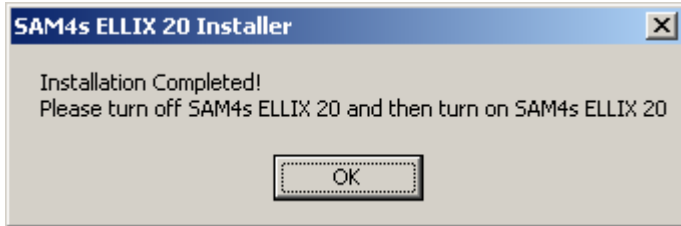
Hit button 'Next'.



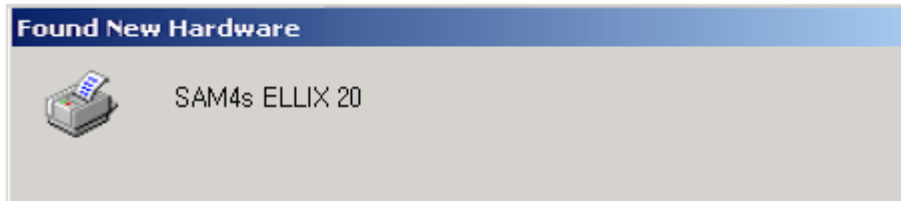
Select 'USB' and push OK.



Select 'Yes'. This does not have any influences on OS, you may ignore it.

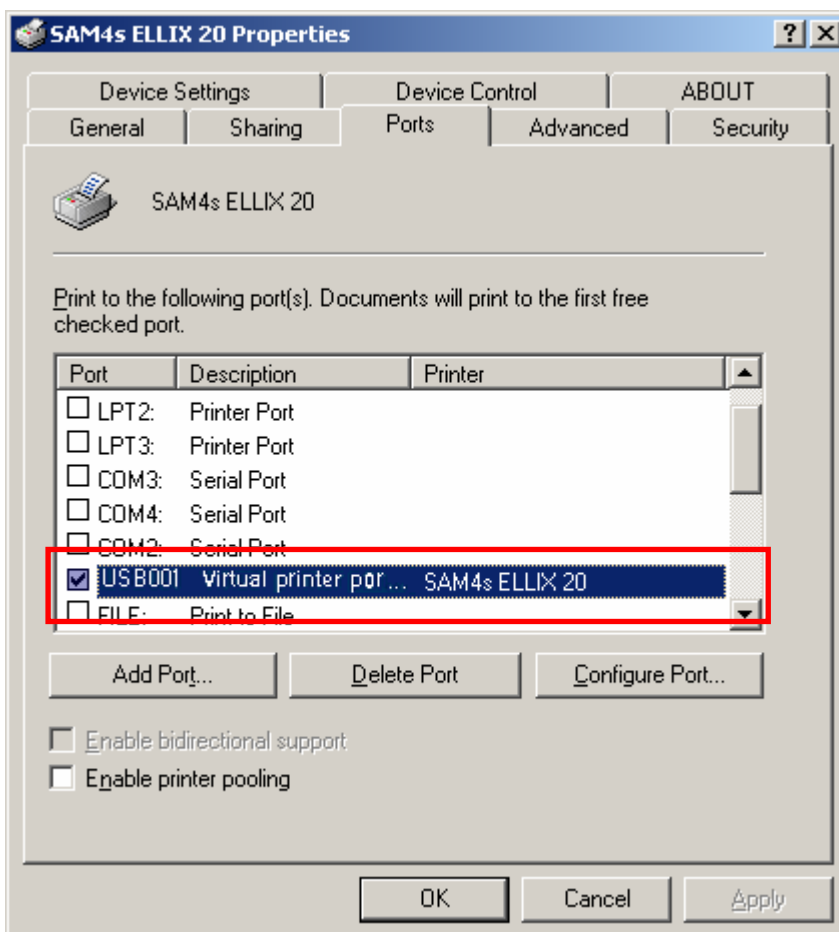


A few second later, message like upper is popped up. Turn on printer and press OK.

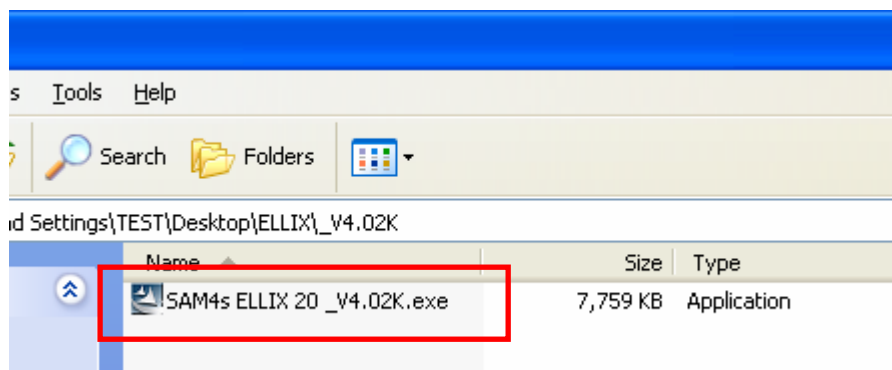


OS finds new hardware automatically and installs.

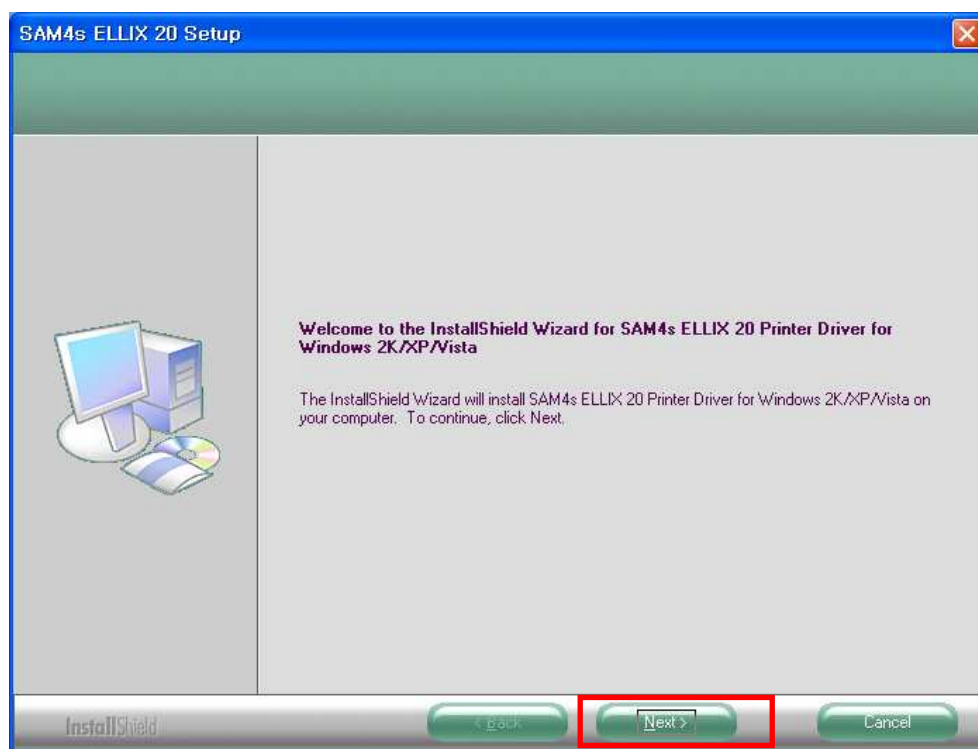
After this progress, open properties of SAM4s ELLIX 20 and check.



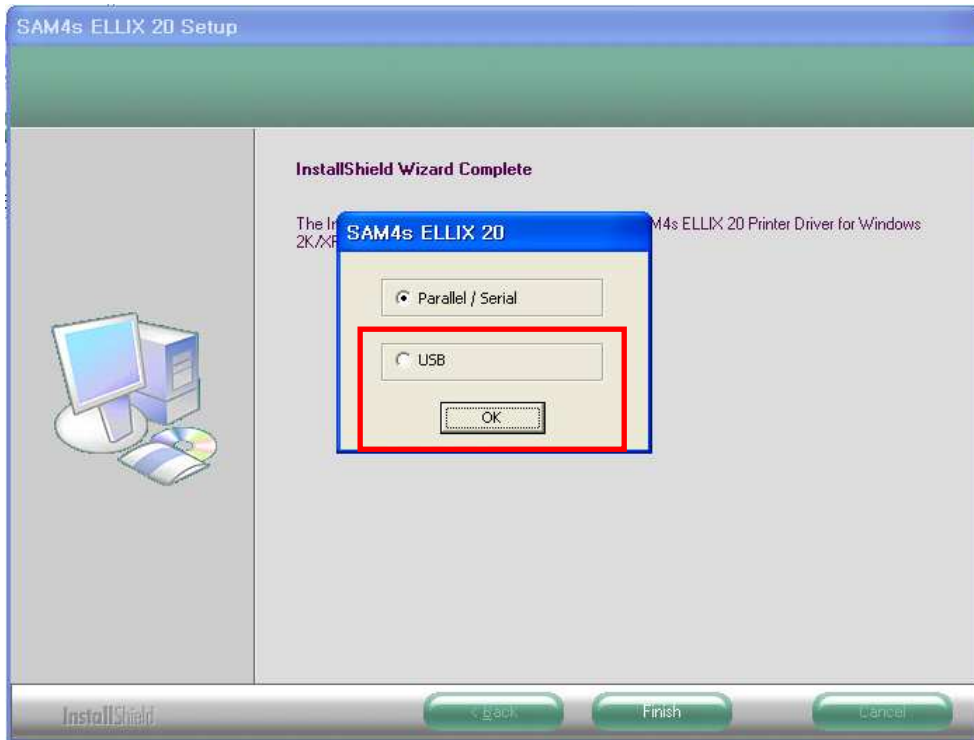
4.4.2 Windows XP



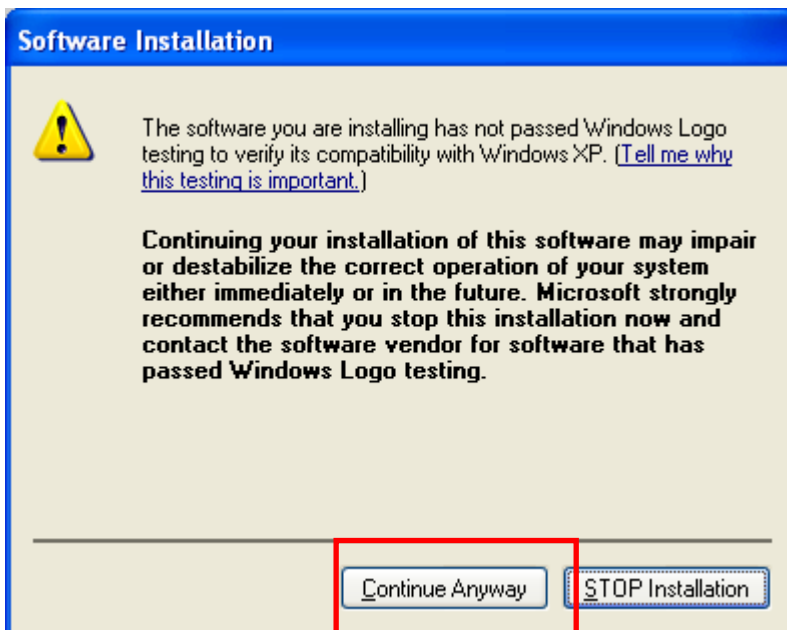
Execute the auto install/uninstall program.



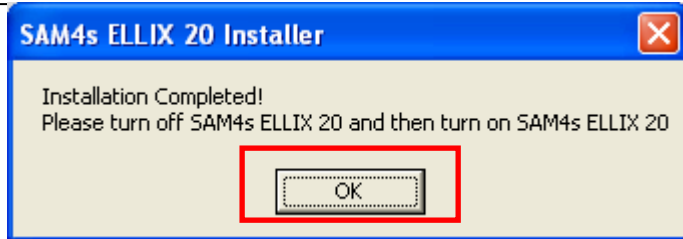
Press button 'Next'.



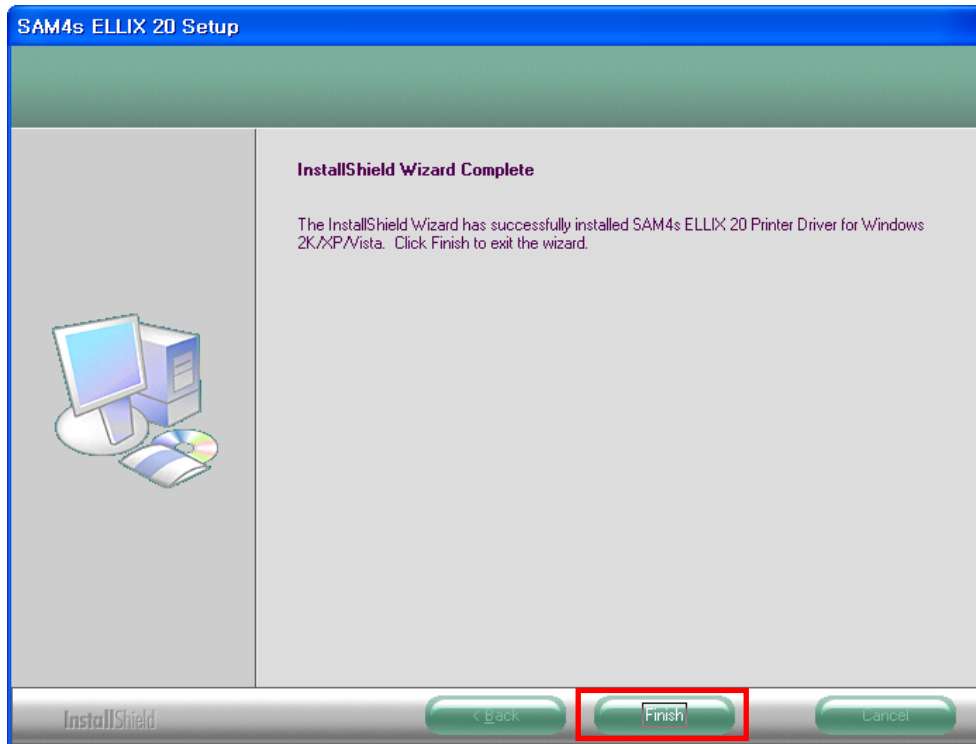
Select 'USB' and then press OK.



Select 'Continue Anyway'. This does not have any influences on OS, you may ignore it.

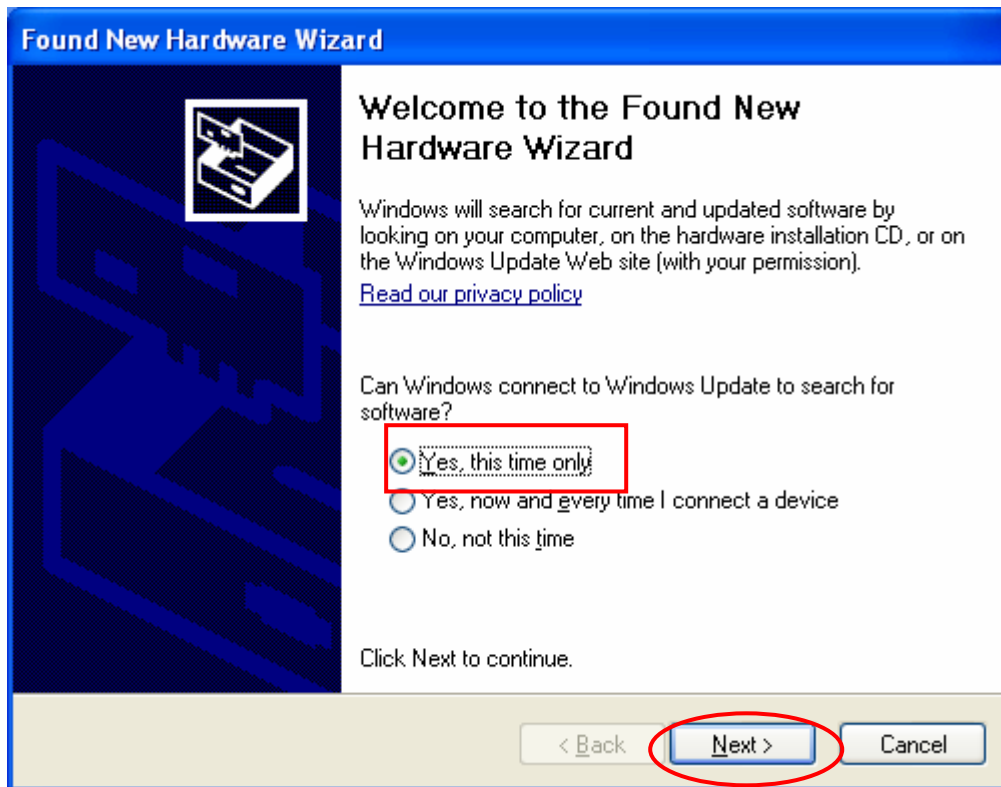


A few second later, message like upper is popped up. Turn on printer and press OK.

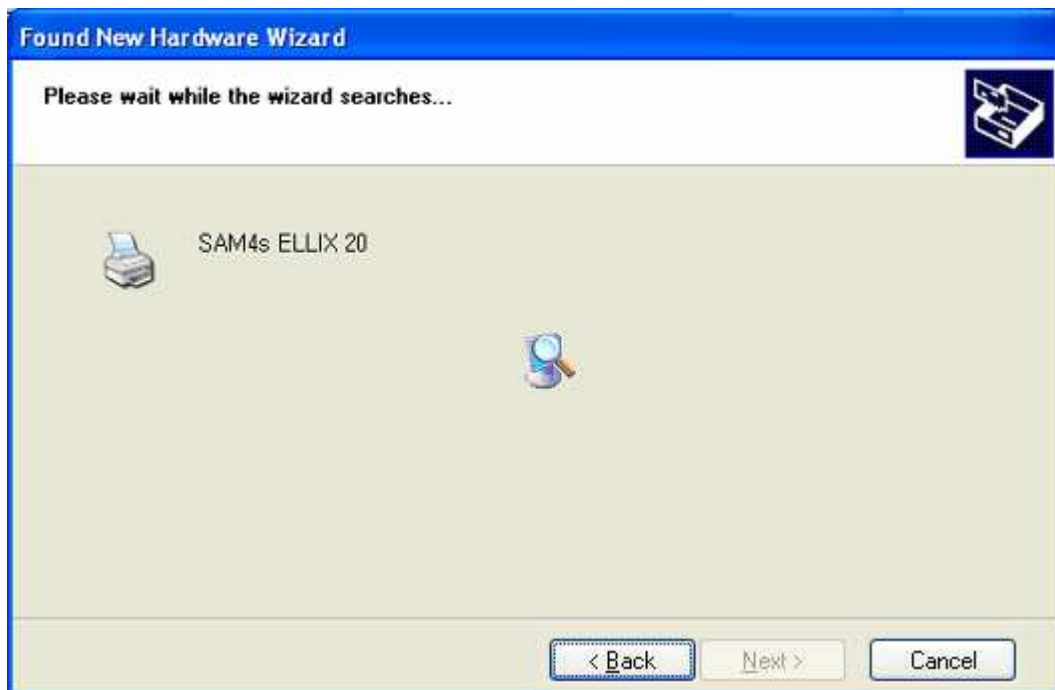


Press Finish button for completing installation.

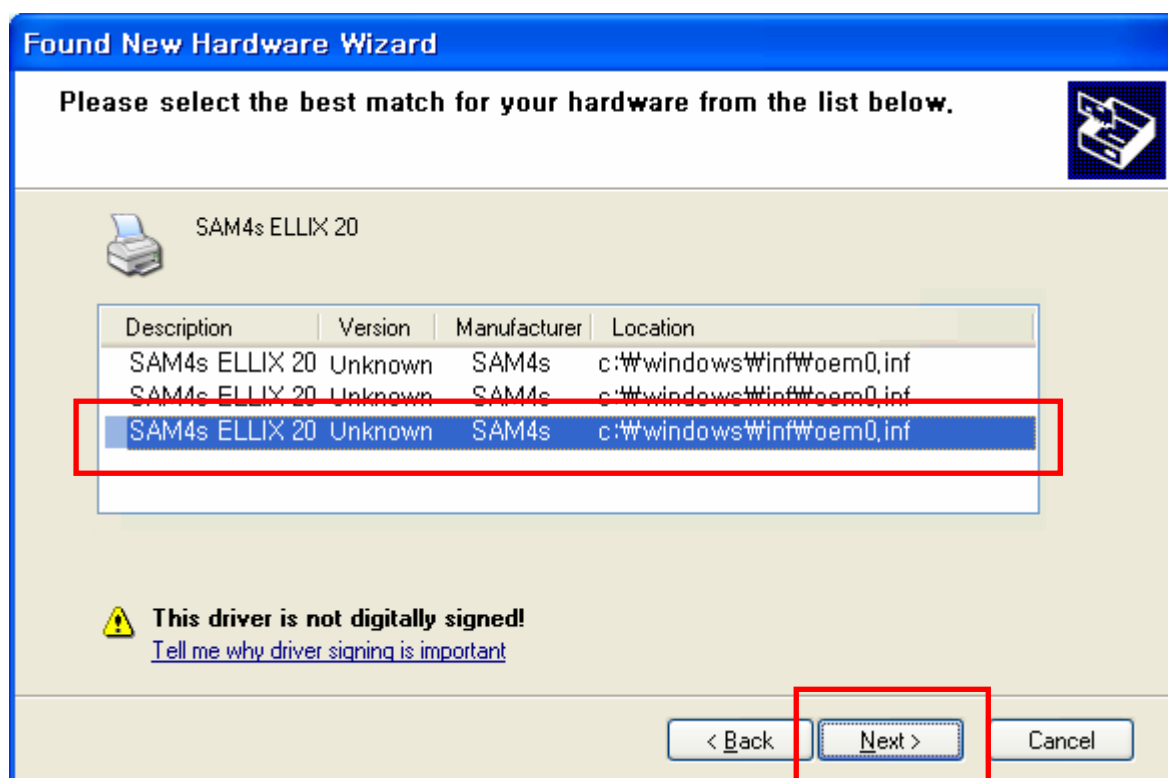




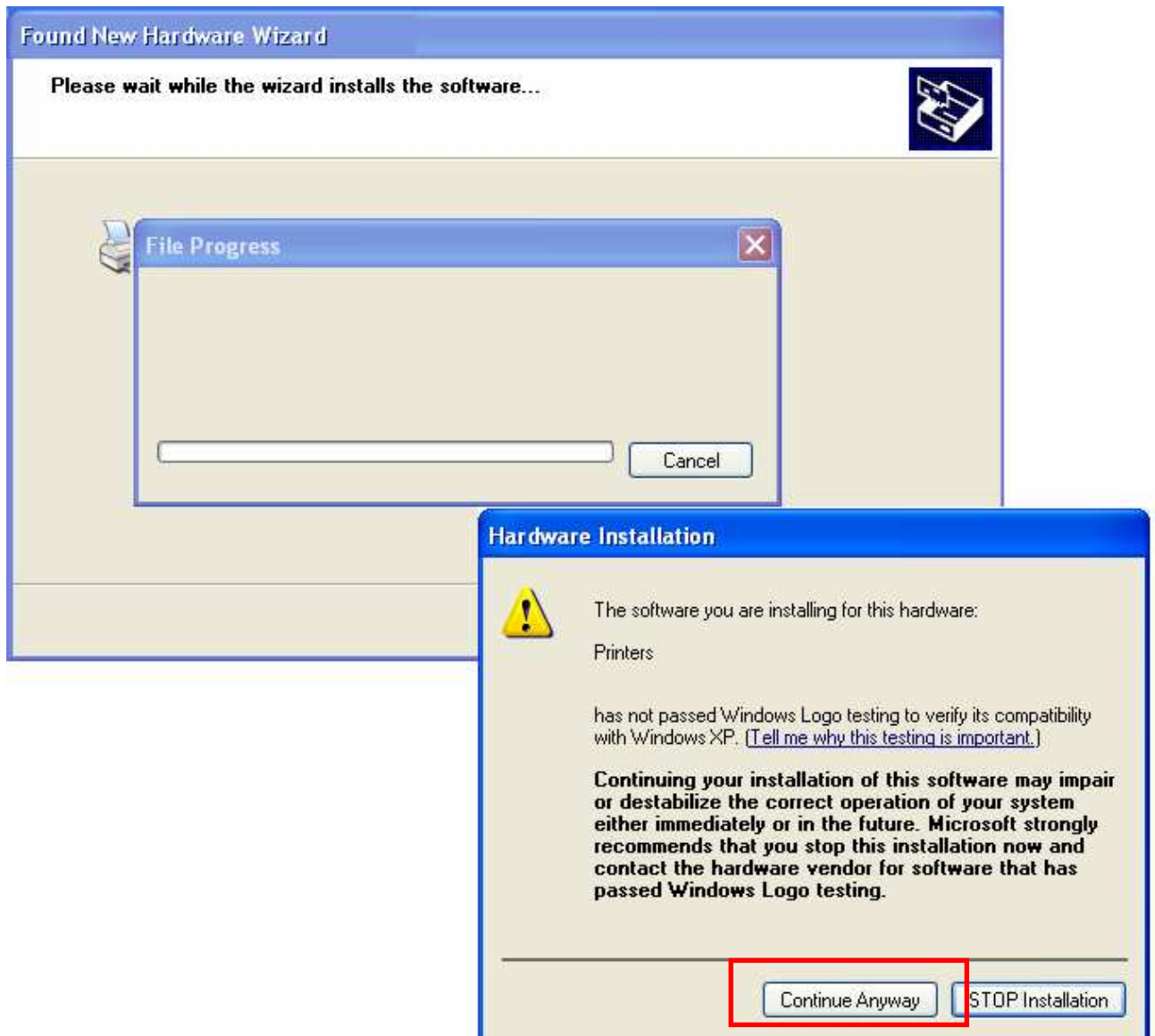
Press button 'Next'.



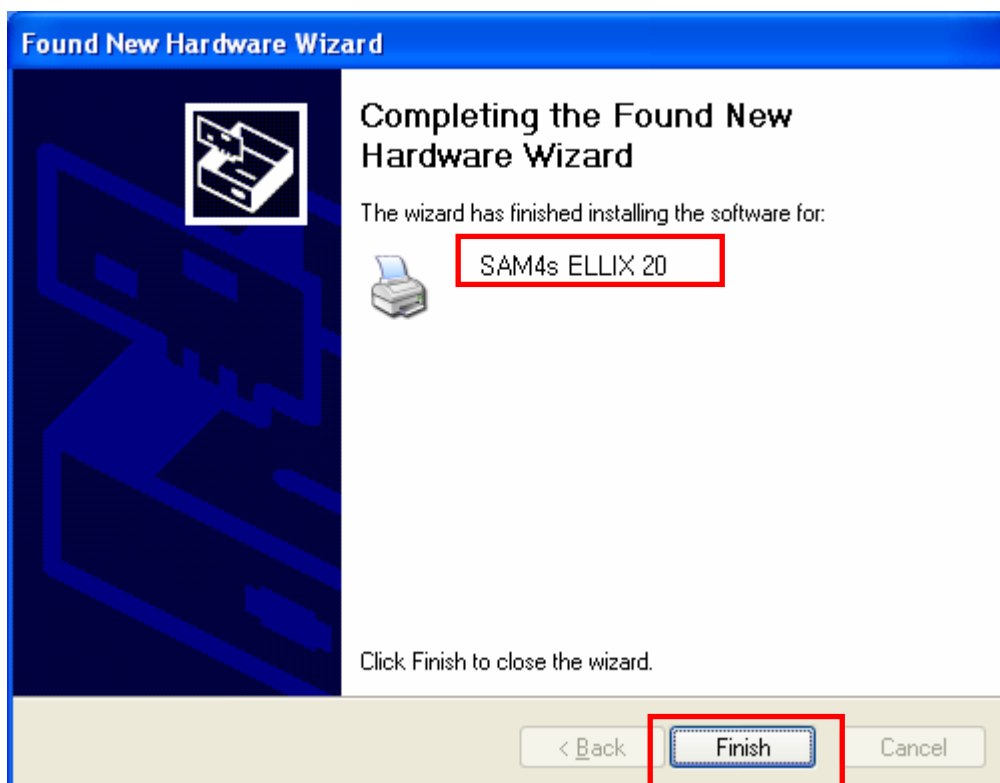
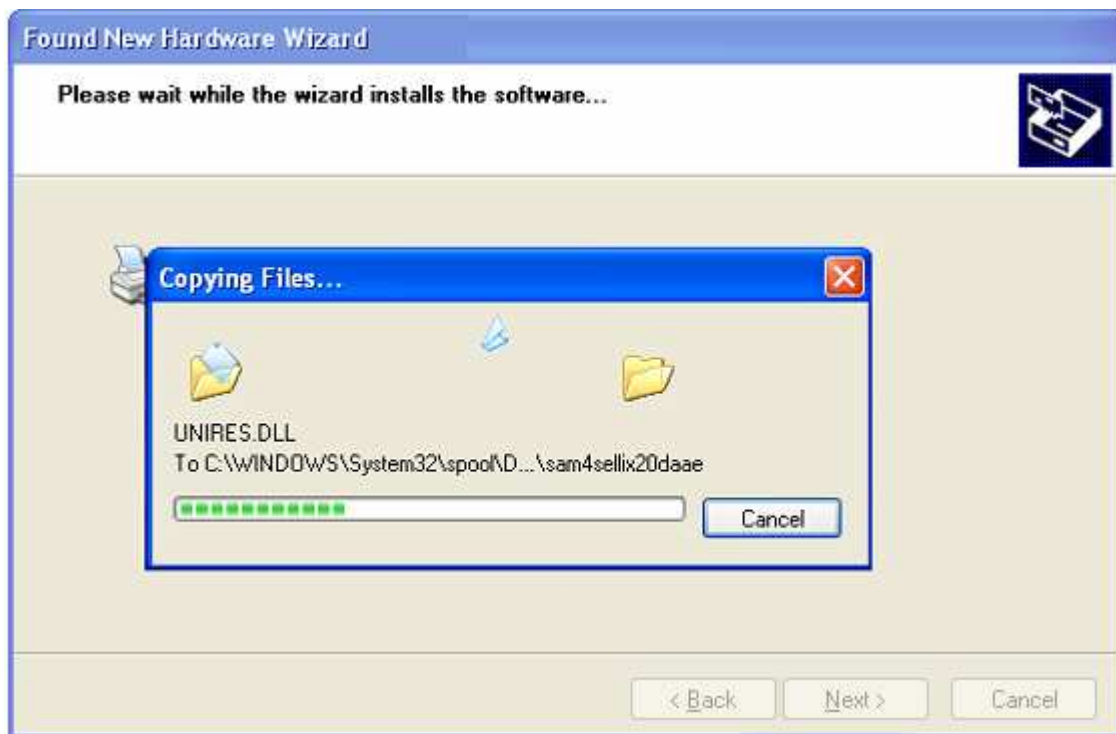
Windows system will search a matching driver automatically.



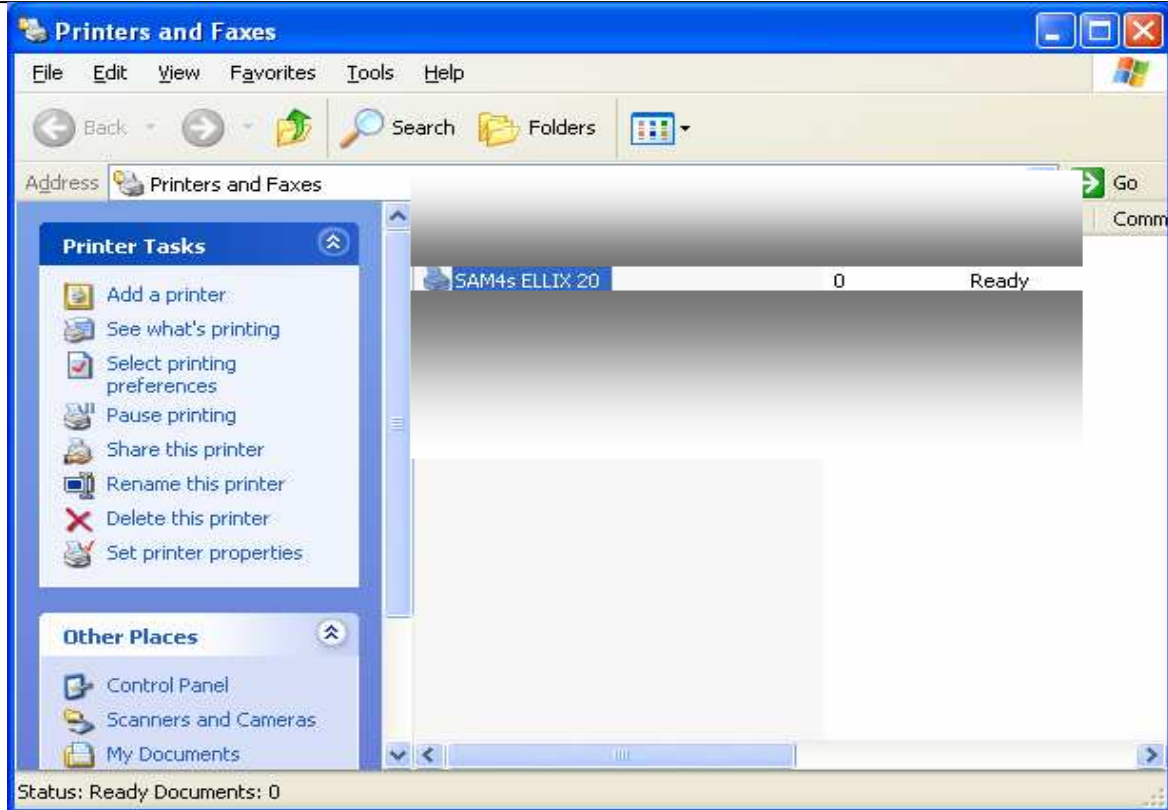
Select inf file and then hit 'Next'.



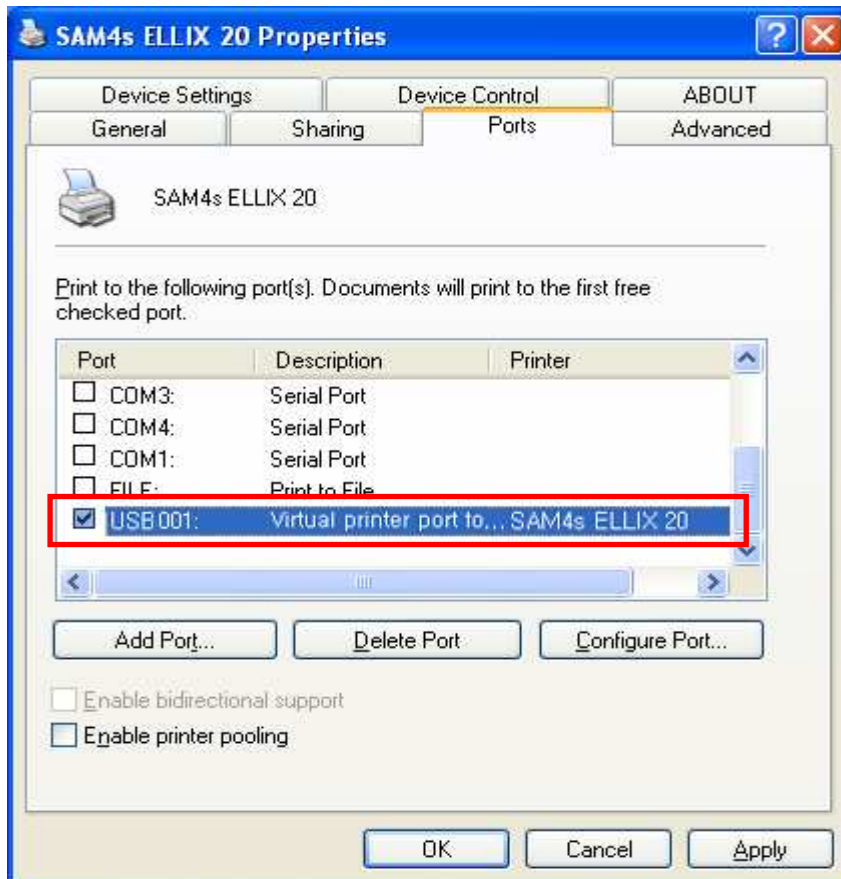
Select 'Continue Anyway'. This does not have any influences on OS, you may ignore it.



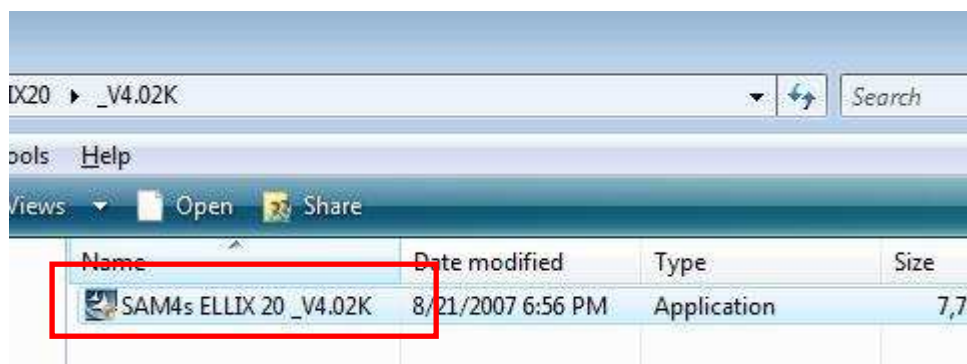
Press button 'Finish' for completing installation.



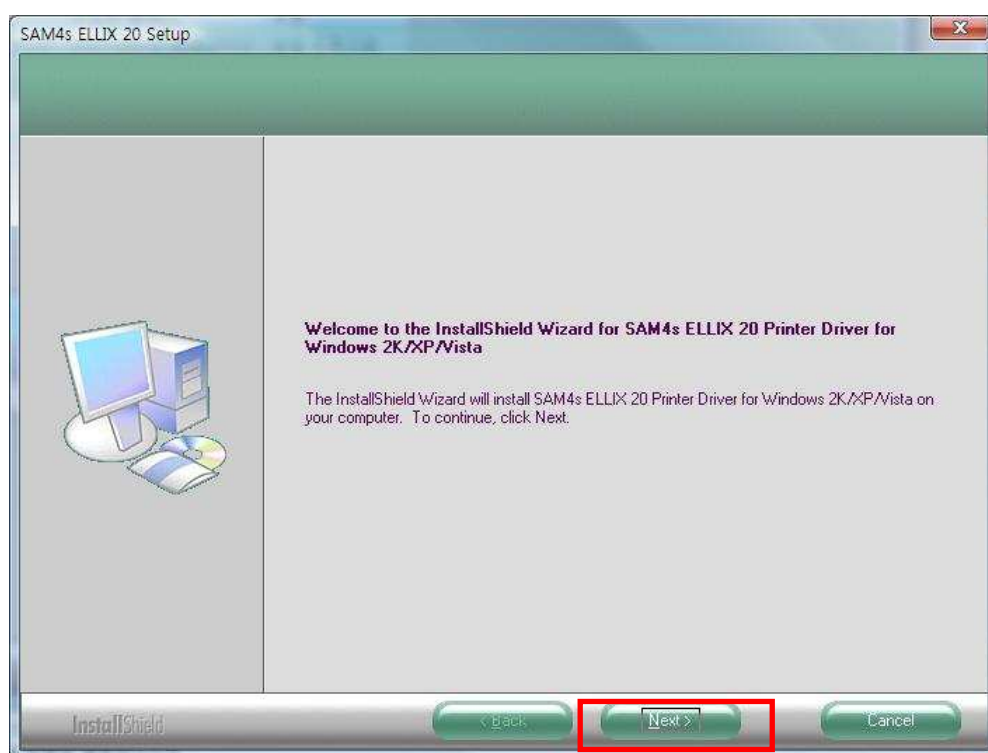
Open SAM4s ELLIX 20 Properties and check port.



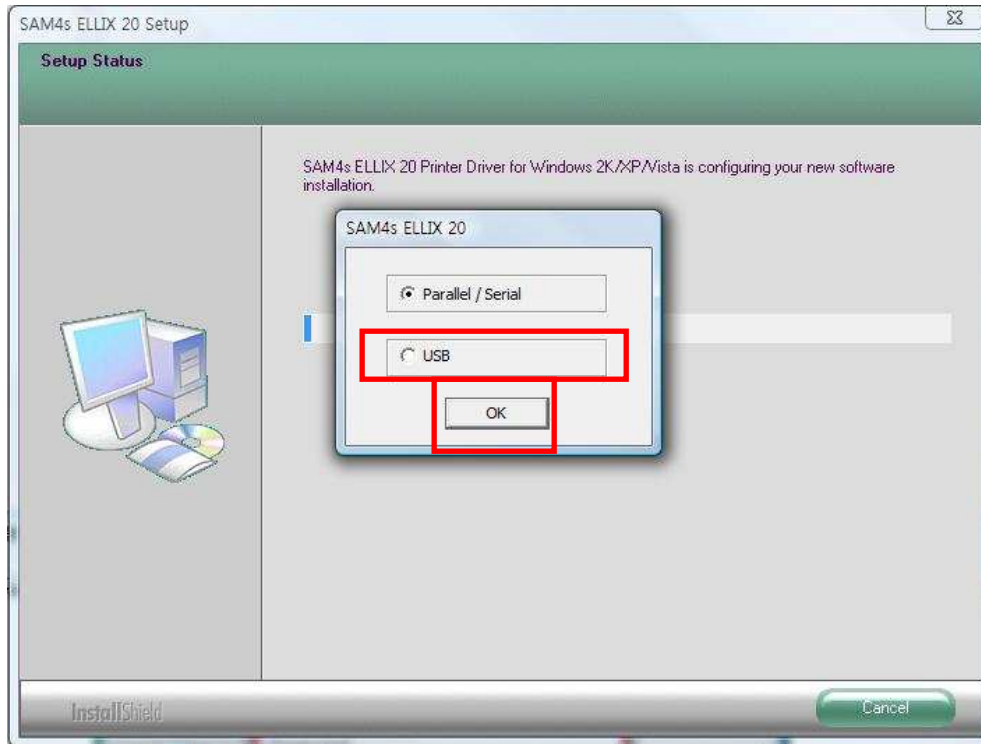
4.4.3 Windows Vista



Execute the auto install/uninstall program.



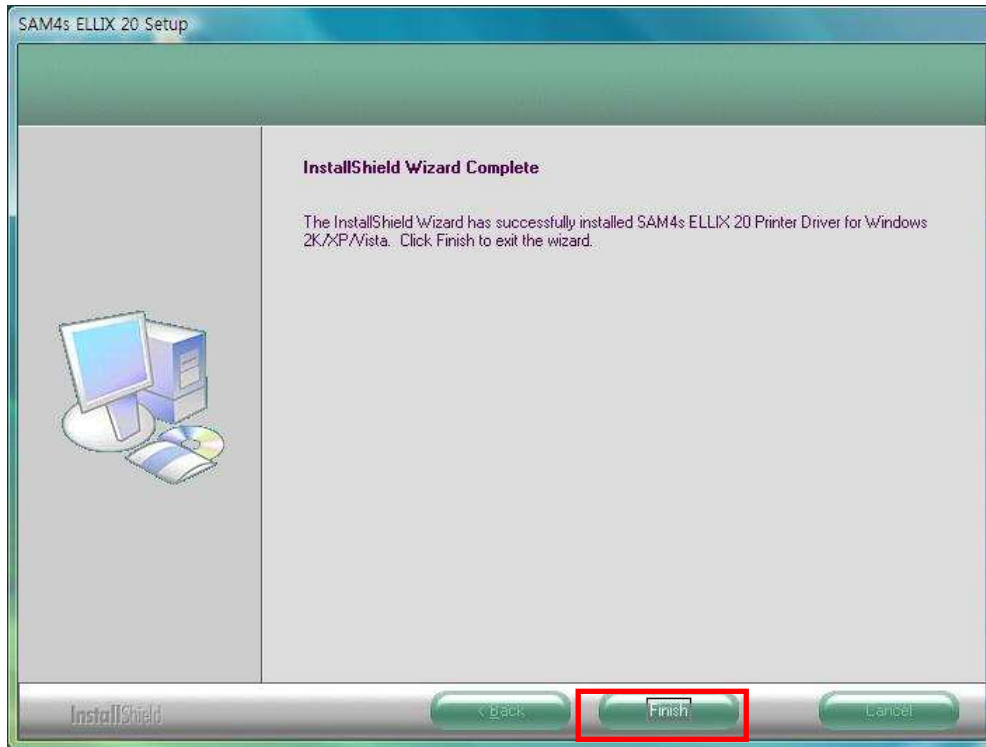
Push the Next.



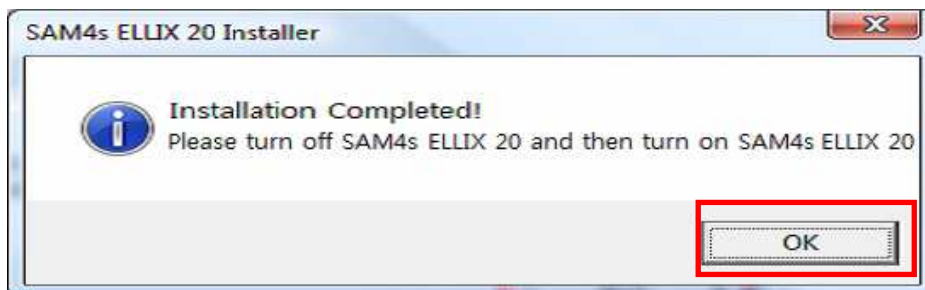
Select 'USB' and press OK.



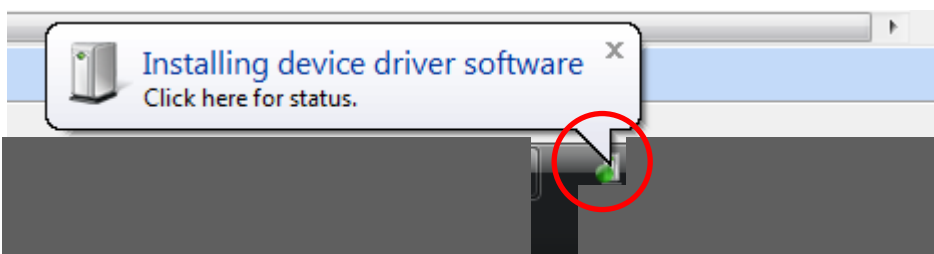
Select 'Install this driver software anyway'. This does not have any influences on OS, you may ignore it.



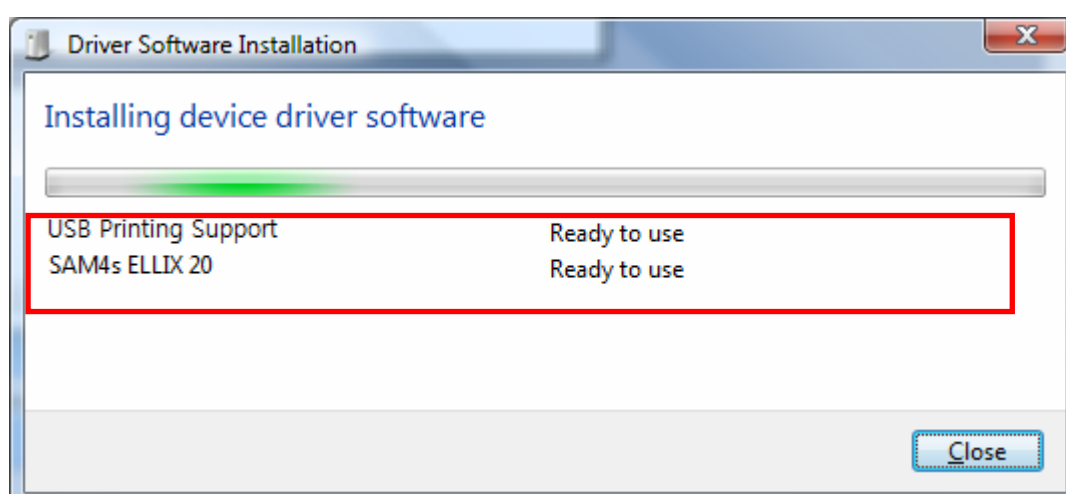
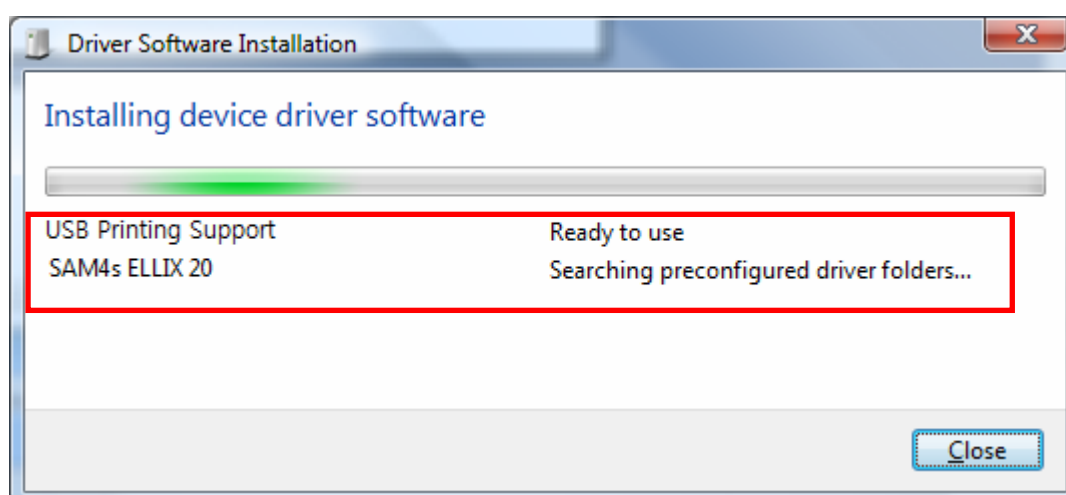
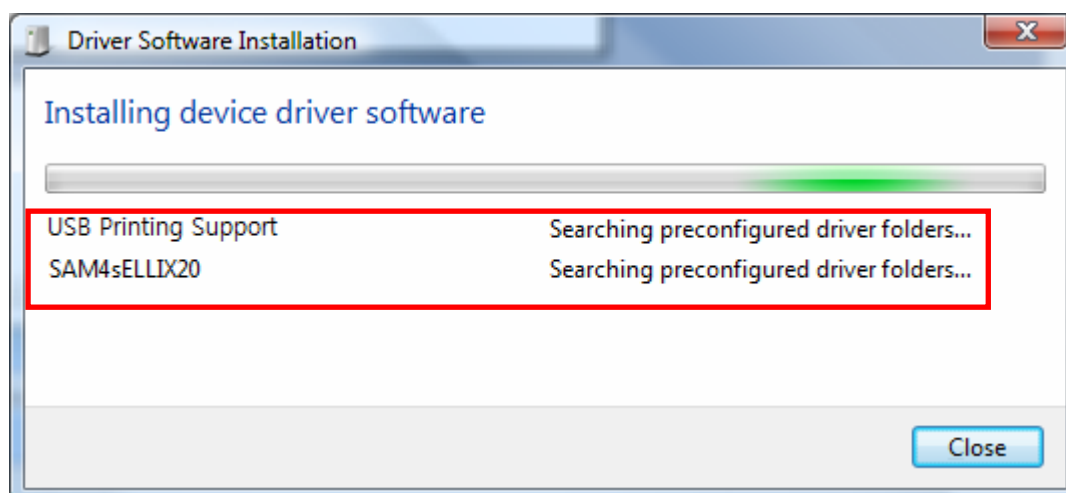
During background progress is going, install program does last steps and waits user's event. So you should press Finish button for completing installation.



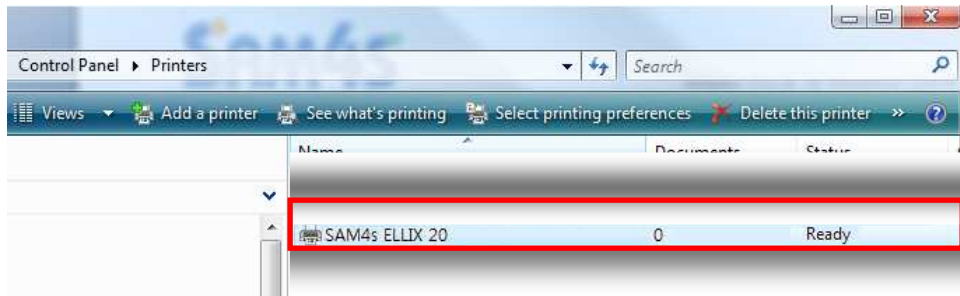
A few seconds later, you'll meet the message like upper shot. You should turn on the printer and then press OK.



Click the balloon message.



Messages are got in order; SAM4s ELLIX 20 Windows Printer Driver is installed automatically.

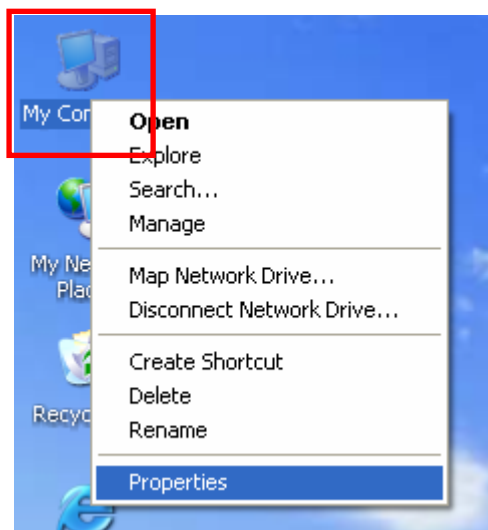


Open Printer folder in Control Panel and check installation successfully.

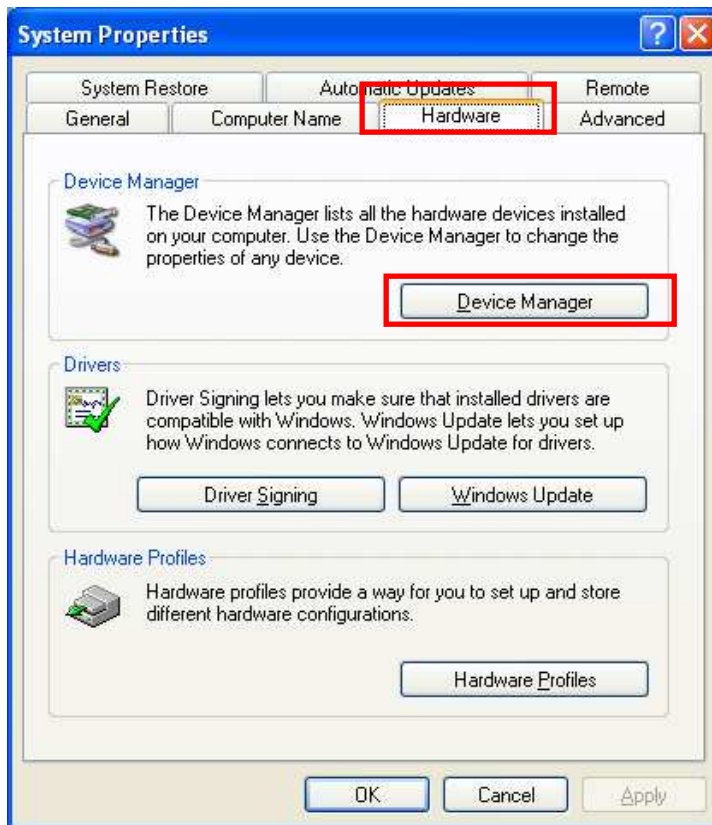
4.4.4 When 'Plug and Play' Message does not popup.

There is sometimes the case which Plug and Play message, recognizing SAM4s ELLIX 20 as USB printer, does not popup. If it is occurred, **restart Windows system**. Even though you restart Windows, if you cannot see popup message, check points below.

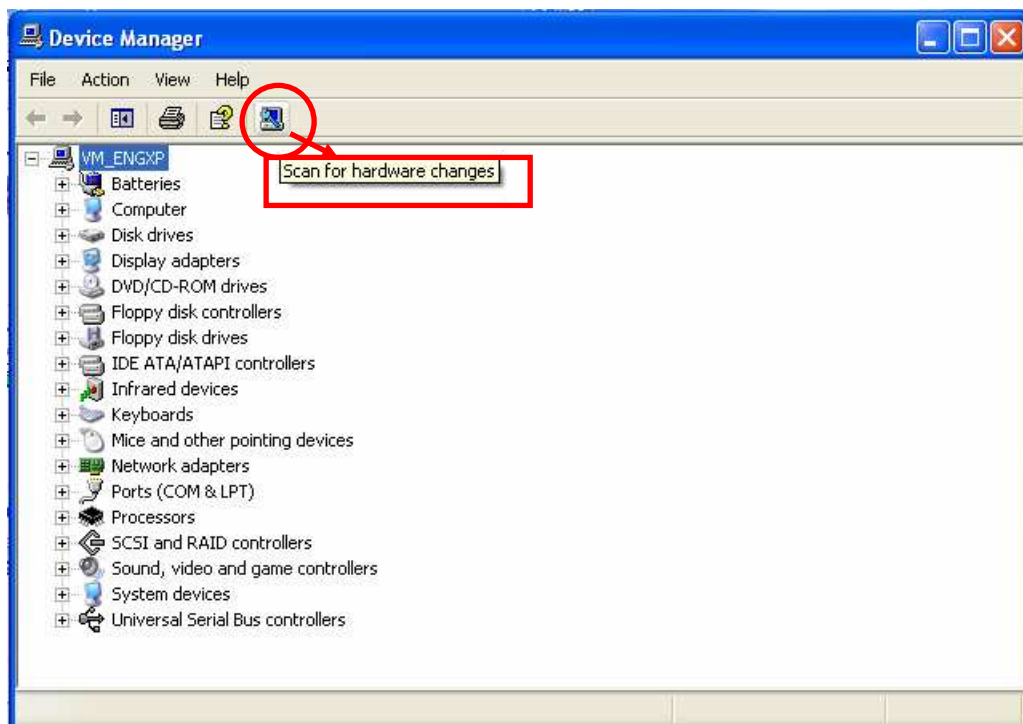
- 1) A case of being that USB Windows Driver is installed for the first time.



Open properties of My Computer.

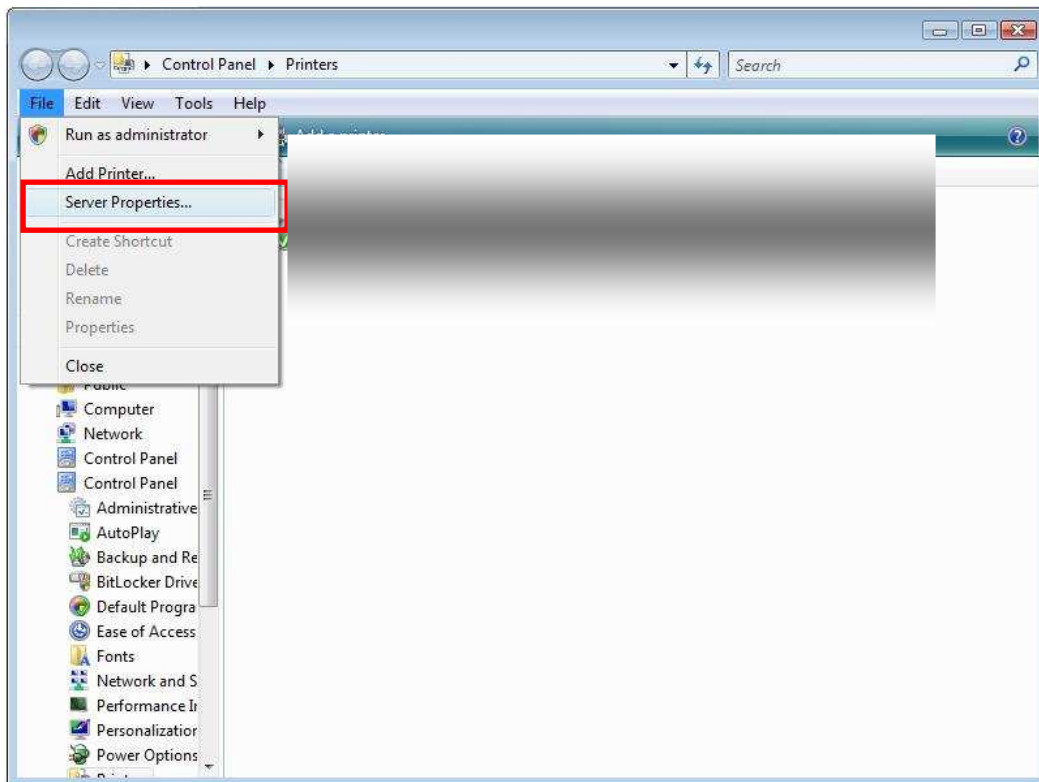


Execute 'Device Manager'.

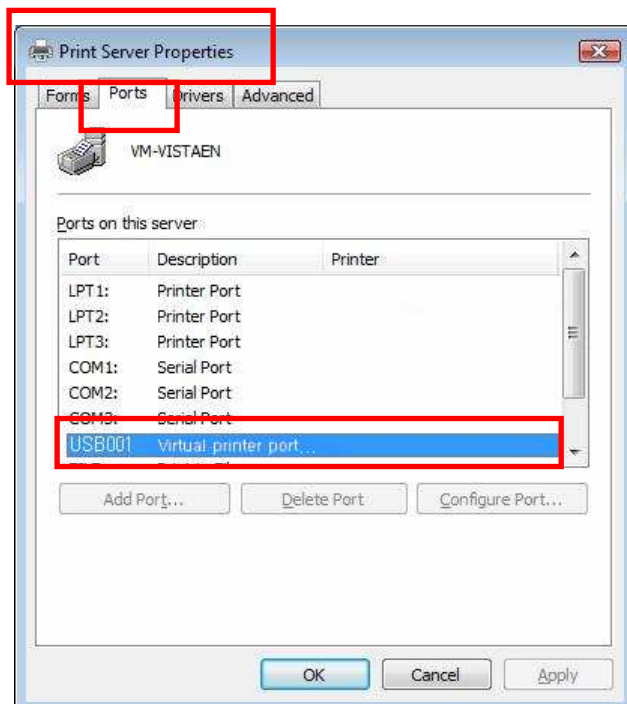


Do "Scan for hardware changes".

2) A case of being that USB Windows Driver was installed before.

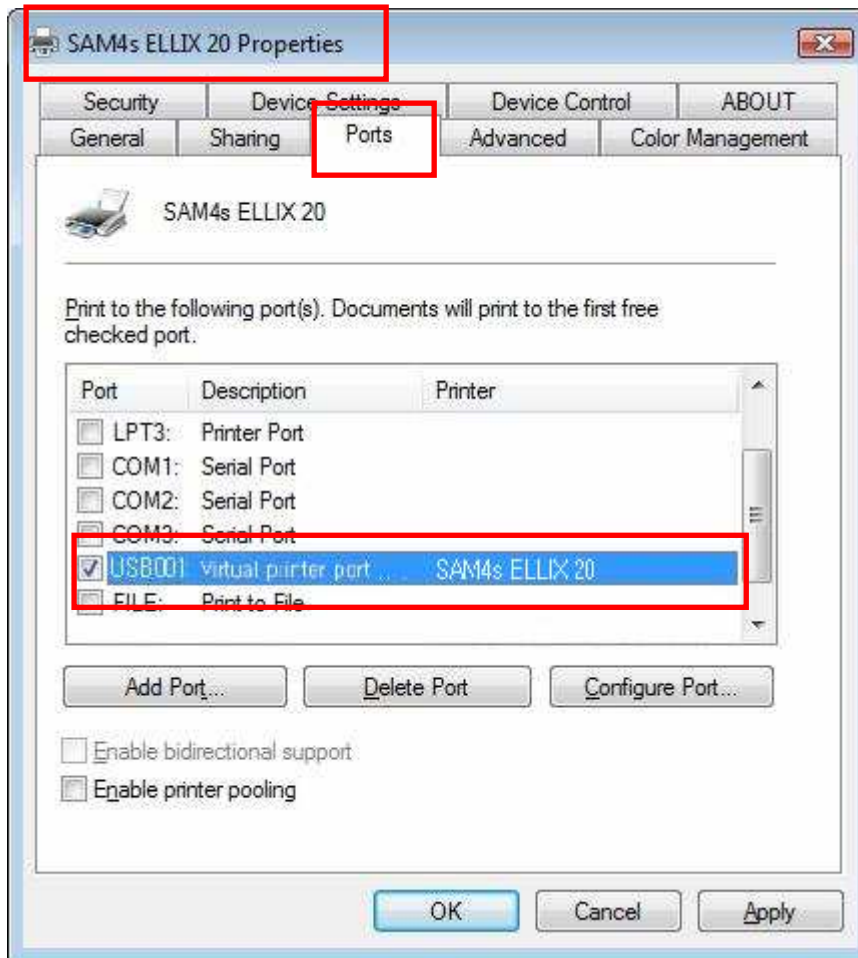


In Printers folder, open 'Server Properties'.



On Ports tab of Print Server Properties, check that USB00n: port already existed.

If USB00n: port already exists, install Windows Driver as the way of explanation at 4.1 Automatic Installation and then change port as USB00n: and use.

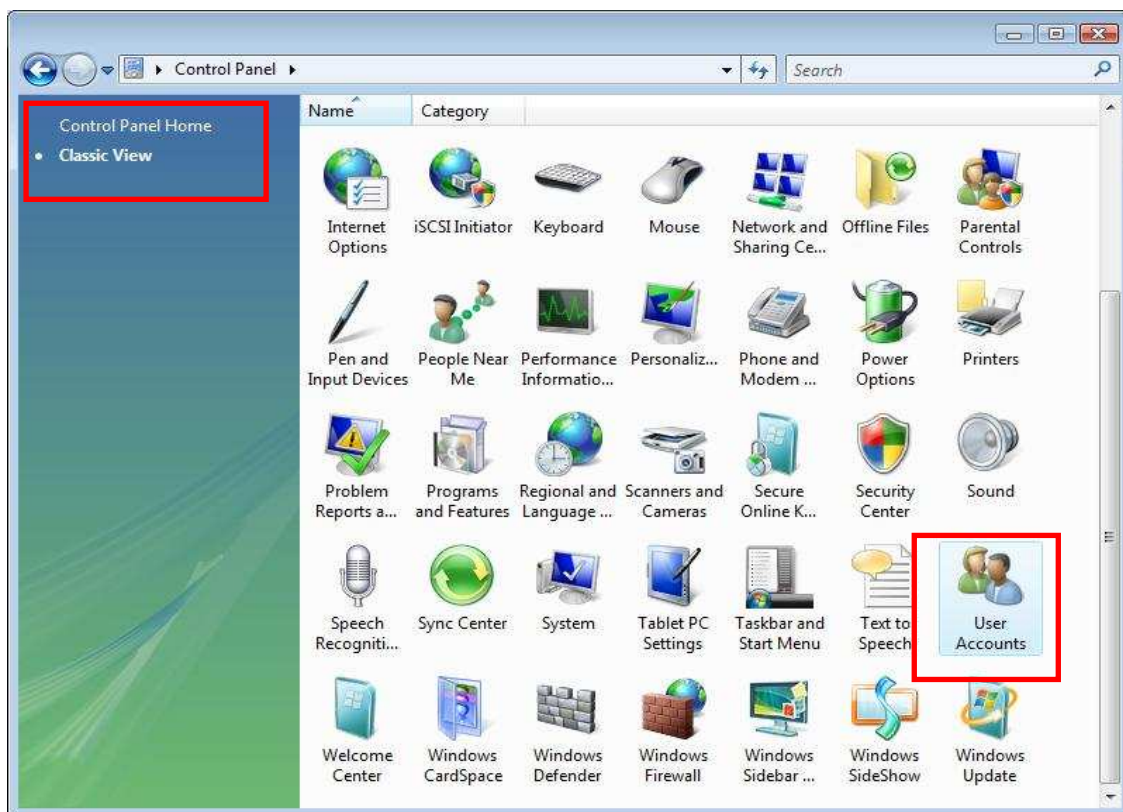


5. Using SAM4s ELLIX 20 in Windows Vista

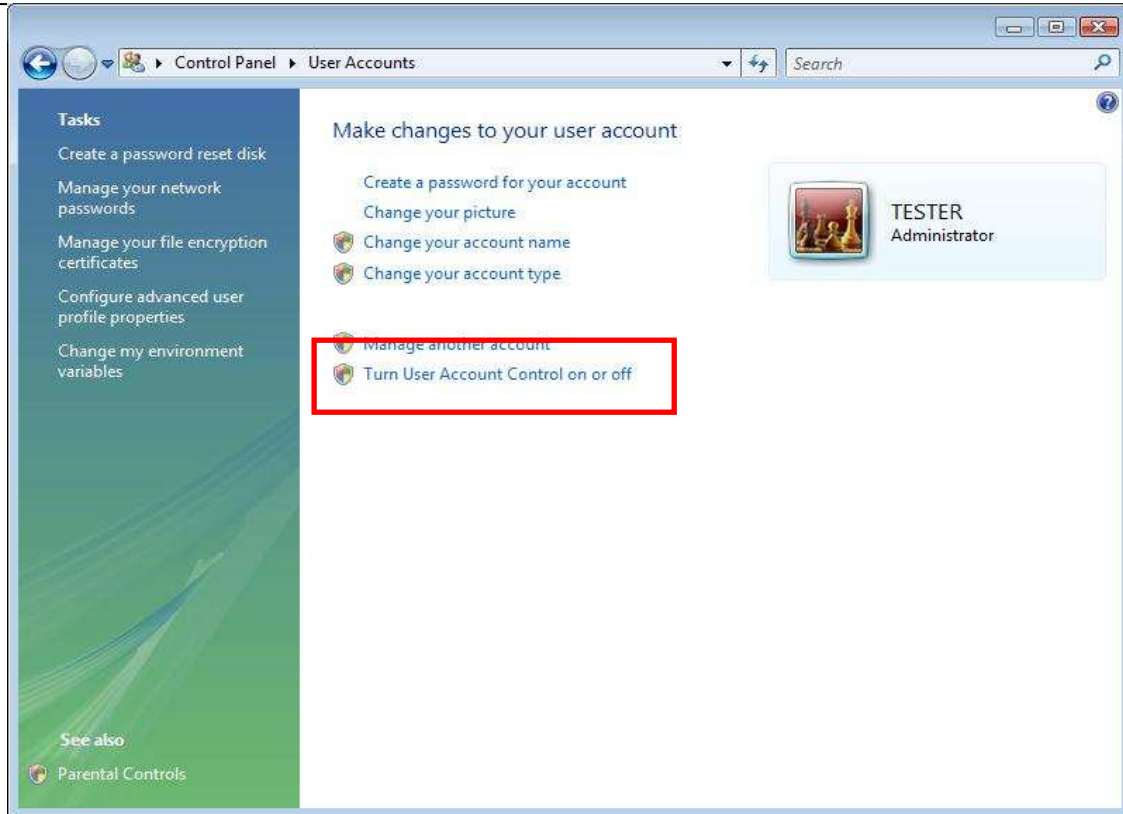
5.1 UAC (User Access Control)

UAC (User Access Control) is a new of Windows Vista. Windows Vista can control user's accessing windows functions, which have an influence, through it. When SAM4s ELLIX 20 is connected with Serial Port (COMn:), Baud rate should be set. In the case of Windows Vista, Baud rate value, we want to, can be set when UAC turns off. Below is the way of turning off UAC.

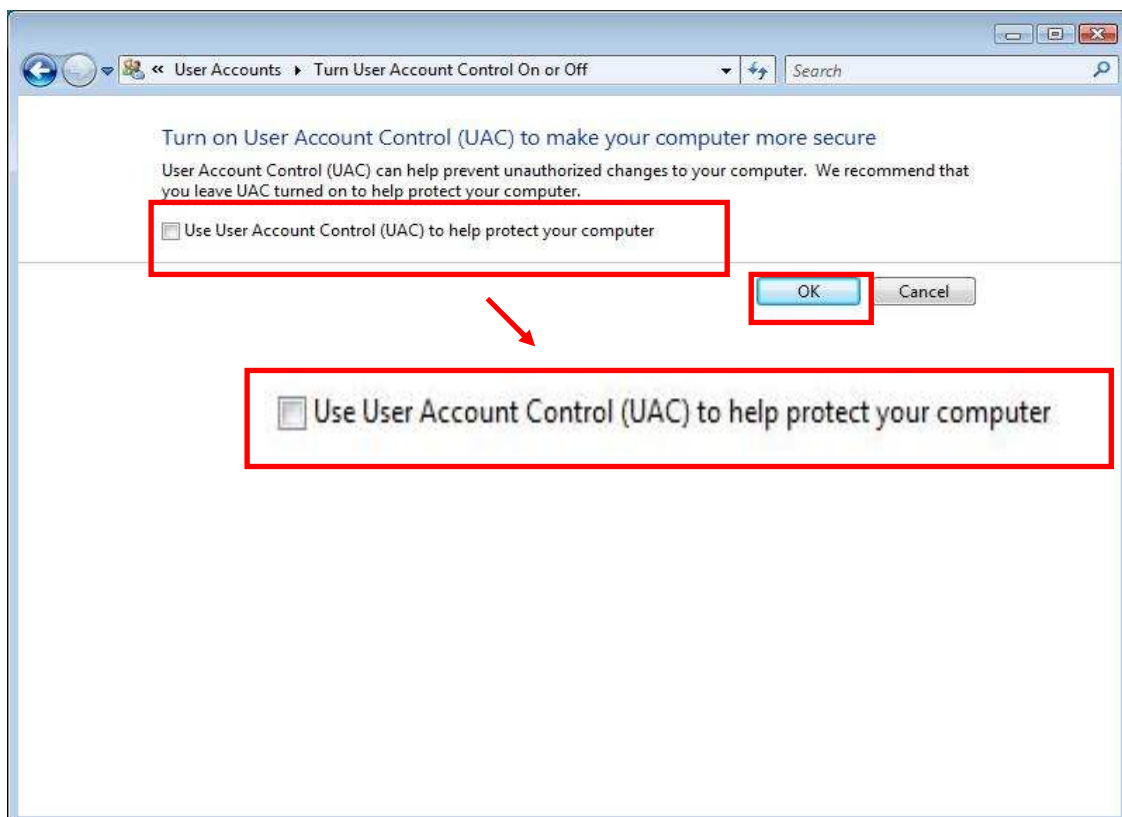
5.2 Turn off UAC and Set Baud rate



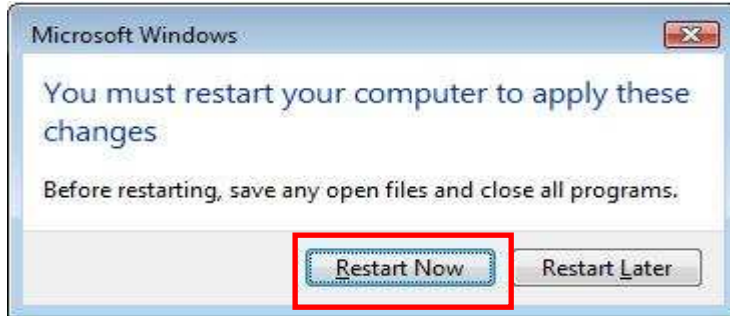
Select 'User Accounts' in Control Panel (As 'Classic View')



Select 'Turn User Account Control on or off'.



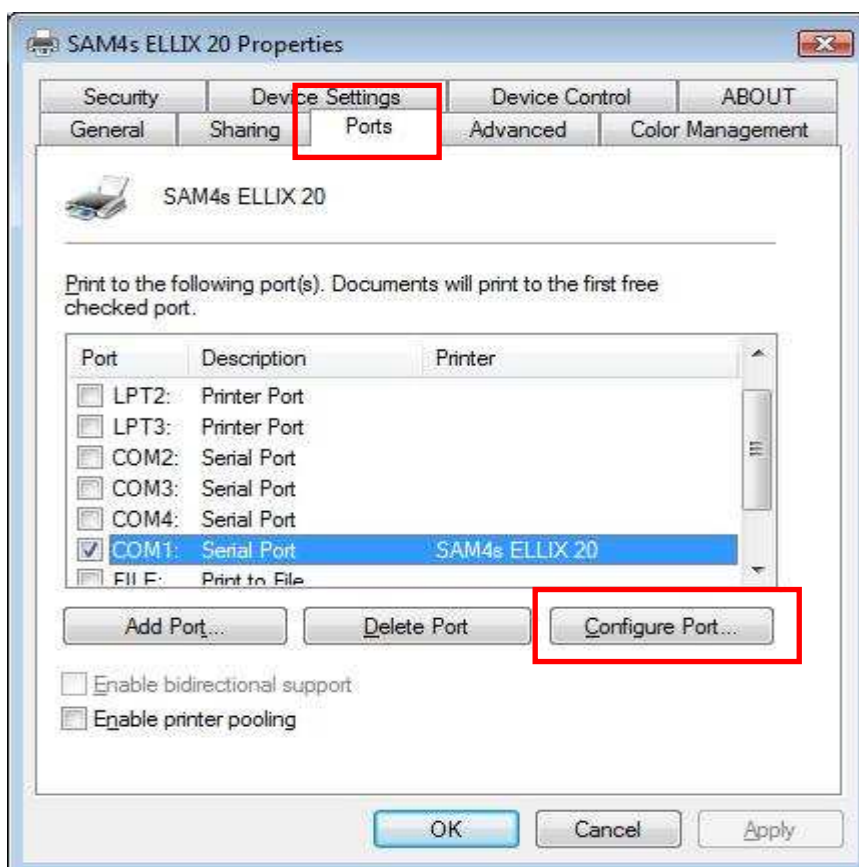
After uncheck the check-button like upper picture, push OK.



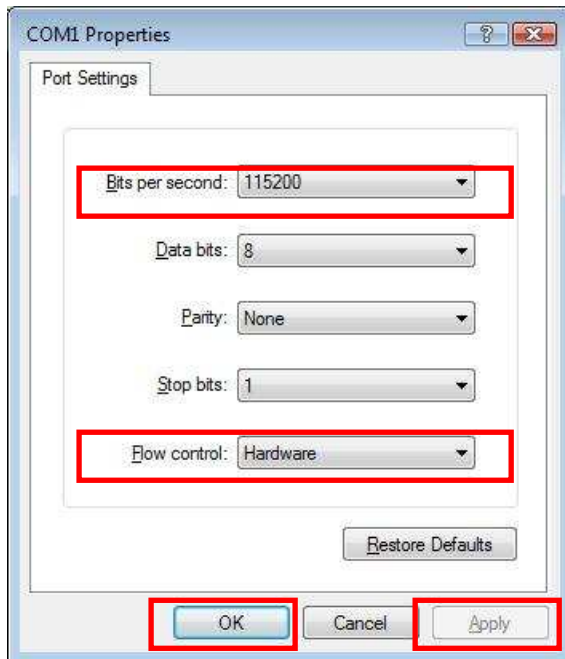
Restart Windows System like as guiding.



When Windows System is restarted, warning message (like a picture) is shown. **Even if you ignore this message, OS is not changed anything.** Now you can set Baud rate value you want to.



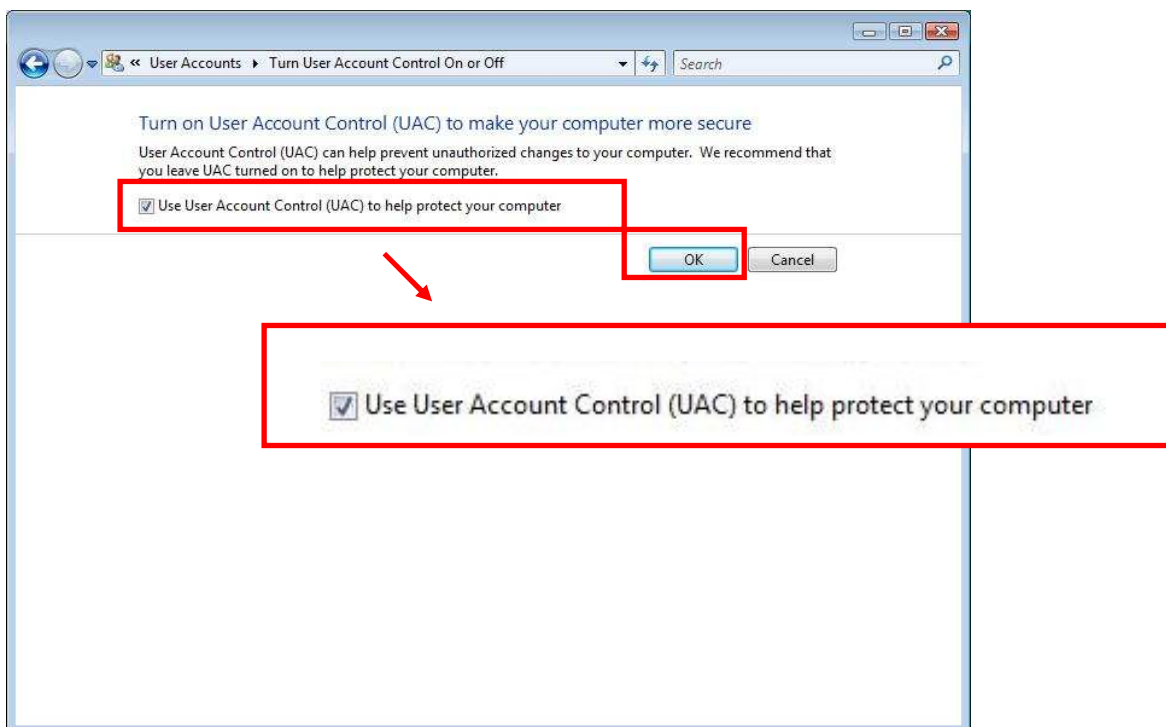
Open properties of installed SAM4s ELLIX 20 Windows Driver and go tab of Port. Select port of SAM4s ELLIX 20 and 'Configure Port...' button.



Set Bits per second as 115200 and Flow Control as hardware, push buttons Apply and OK.

5.3 Turn on UAC

5.3.1 Using Control Panel

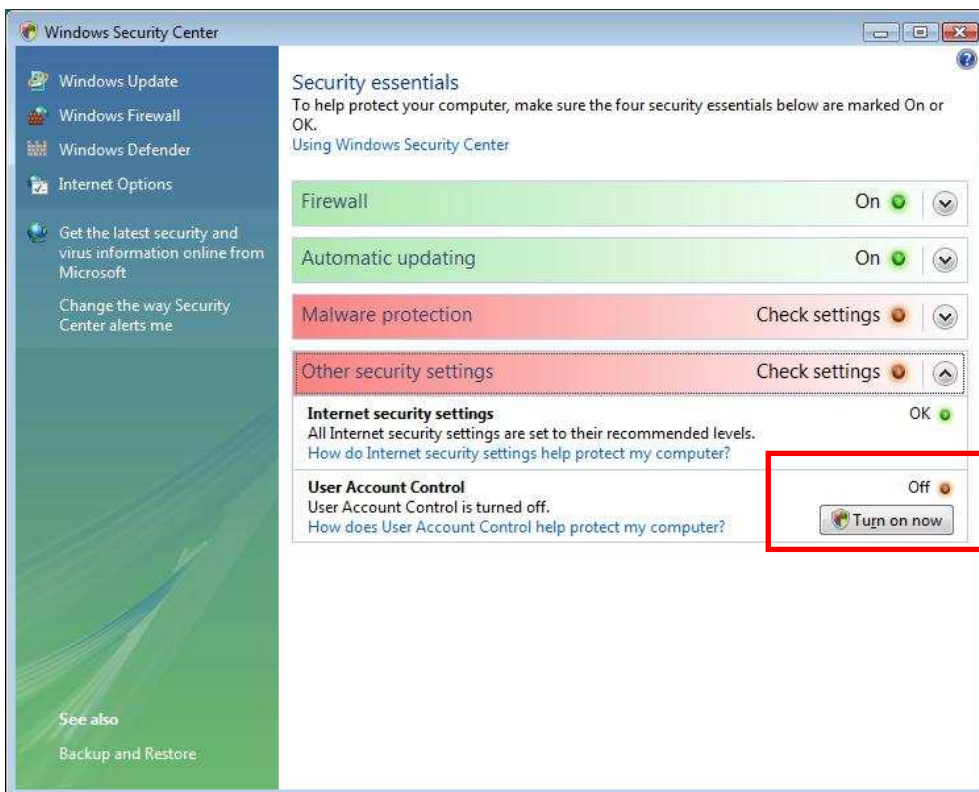


Like explaining at 5.2, check button at 'Use User Account Control(UAC) to help protect your computer' and then restart system.

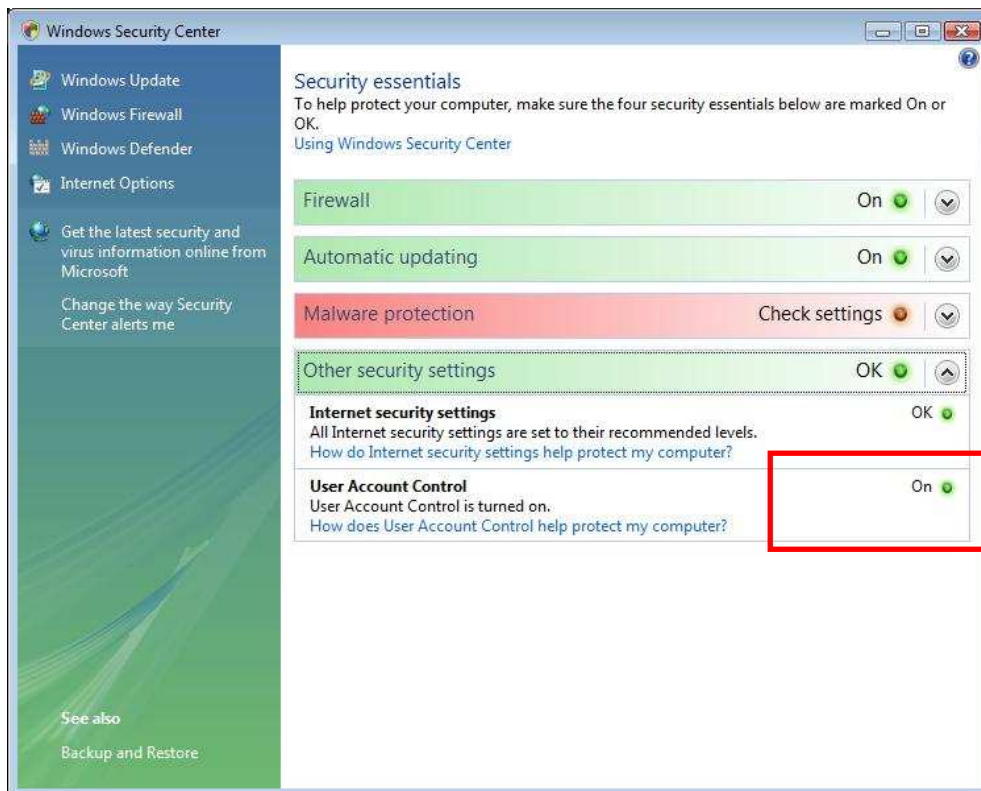
5.3.2 Using balloon message



If UAC turns off, whenever a system is starting, balloon message is shown like upper picture. Click this balloon or red shield icon.



You can look at the setting as 'Off' in Windows Security Center. If you want to turn on UAC, press the button 'Turn on now'.



You can see that 'On' lamp of UAC turned on.