

SAM4s ELLIX 20II

Windows Driver Install Manual

(Over V2.00L)

1. Foreword	1
2. OS Environment	1
3. Uninstall ELLIX 20II printer driver existed	2
3.1 SAM4s ELLIX 20II	2
4. Install/Uninstall New SAM4s ELLIX 20II	5
4.1 Automatic Installation	5
4.2 Automatic Un-installation	8
4.2.1 Using auto install/uninstall program	8
4.2.2 Using Control Panel	10
4.3 Setting SAM4s ELLIX 20II with Parallel Port (LPTn:)	12
4.3.1 Windows XP	12
4.3.2 Windows Vista	16
4.3.3 Windows 7	18
4.4 Setting SAM4s ELLIX 20II with USB Port	21
4.4.1 Windows XP	21
4.4.2 Windows Vista	29
4.4.3 Windows 7	33
4.4.4 When 'Plug and Play' Message does not popup.	39
5. Using SAM4s ELLIX 20II in Windows Vista or Upper Version Windows	43
5.1 UAC (User Access Control)	43
5.2 Turn off UAC and Set Baud rate	43
5.3 Turn on UAC	46
5.3.1 Using Control Panel	46
5.3.2 Using balloon message	47

1.Foreword

It is this document that is a manual about installing SAM4s ELLIX 20II Windows printer driver, over V2.00L version. Application can print with SAM4s ELLIX 20II Windows printer driver.

2.OS Environment

SAM4s ELLIX 20II Windows printer driver can be supported below OS.

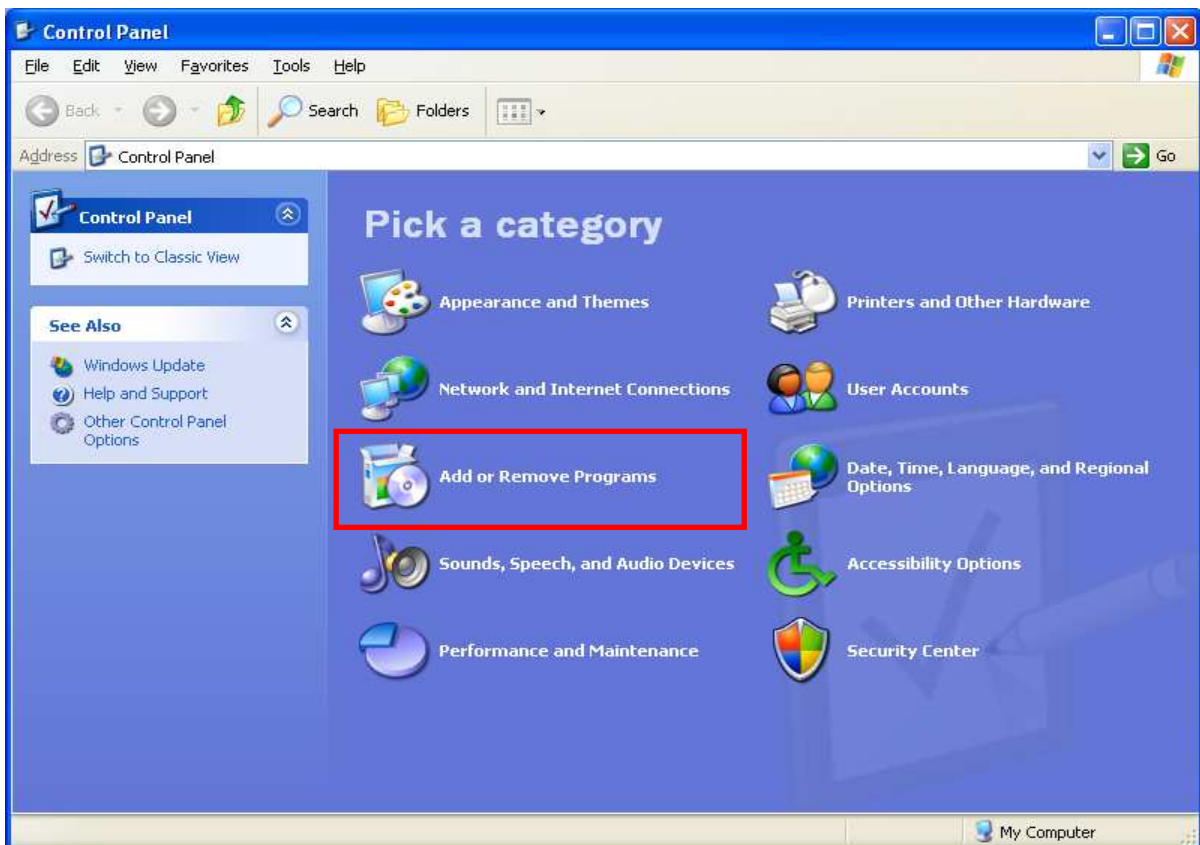
- Microsoft Windows XP
- Microsoft Windows 2003 Server
- Microsoft Windows Vista
- Microsoft Windows 7
- Microsoft Windows 2008 Server

3. Uninstall ELLIX 20II printer driver existed

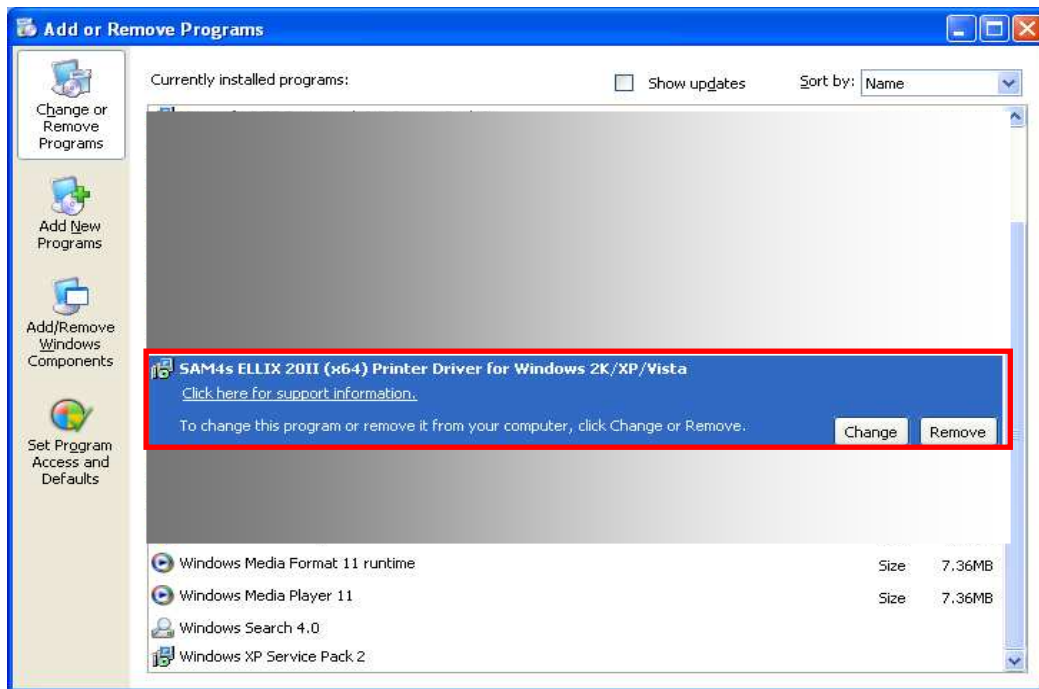
3.1 SAM4s ELLIX 20II

When a new “SAM4s ELLIX 20II” Windows Driver is installed, it is recommended uninstalling ELLIX 20II printer driver, “SAM4s ELLIX 20II” Windows Driver. Below are steps about un-installation.

CF) The auto-install/uninstall program of SAM4s ELLIX 20II also can be useful.



Select 'Add or Remove Programs' on Control Panel.

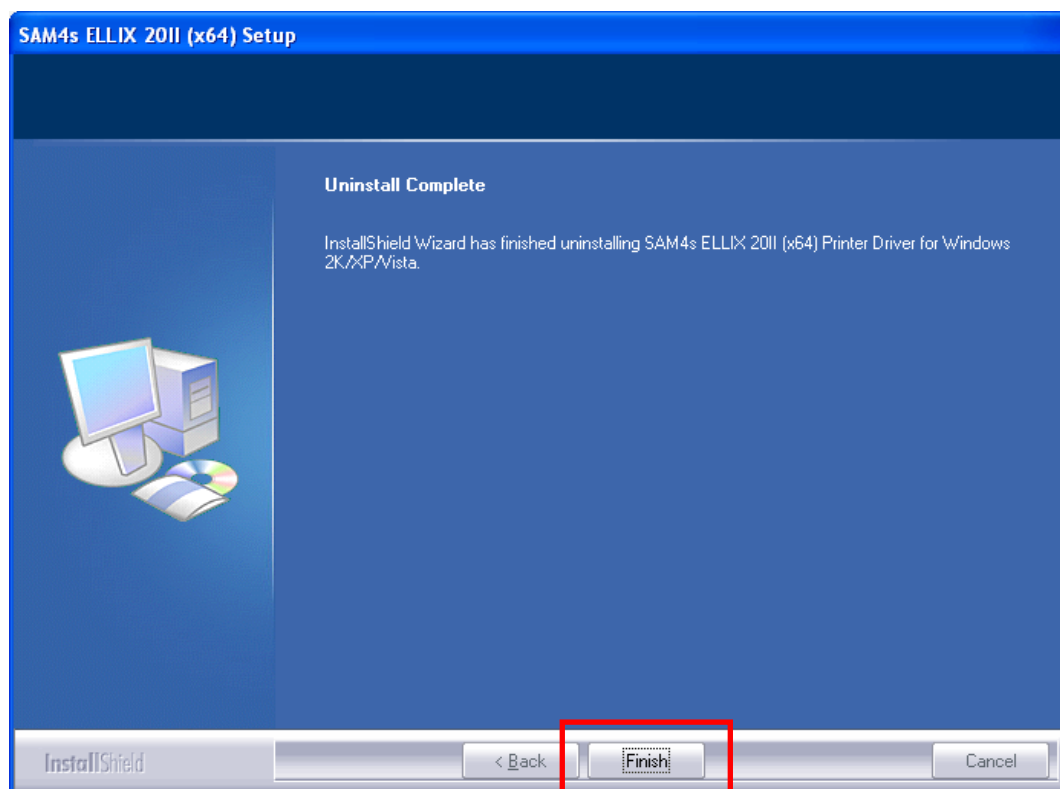


After selecting SAM4S ELLIX 20II(x86) Printer Driver for Windows 2K/XP/Vista¹, push the button of Change/Remove.



Uninstalling program executes automatically.

¹ OR SAM4S ELLIX 20II(x86) Printer Driver for Windows 2K/XP/Vista

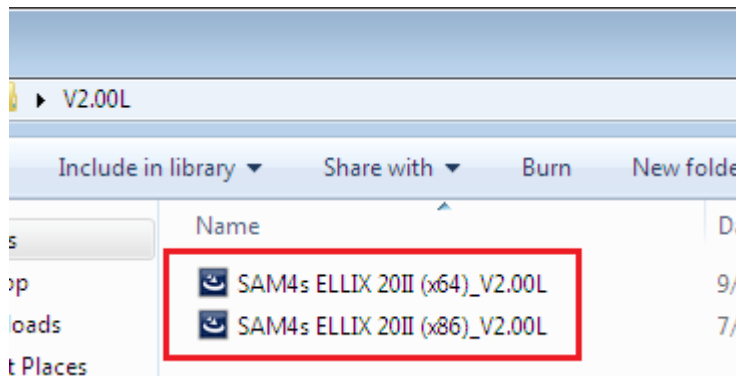


Do uninstall progress by program's guides.

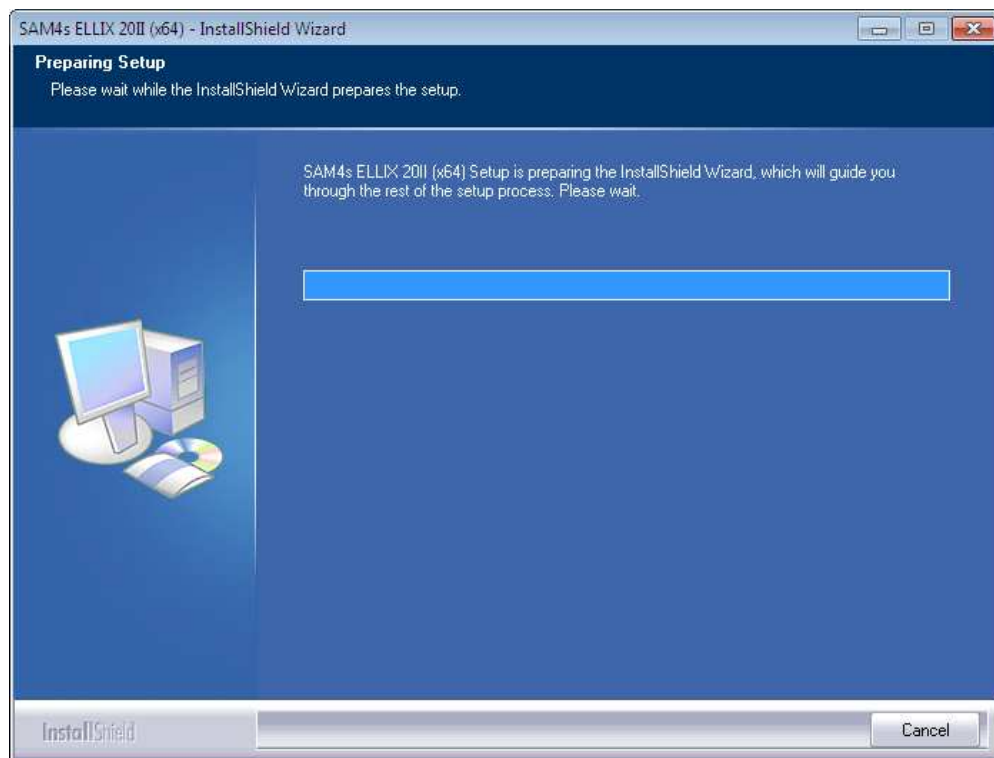
4. Install/Uninstall New SAM4s ELLIX 20II

4.1 Automatic Installation

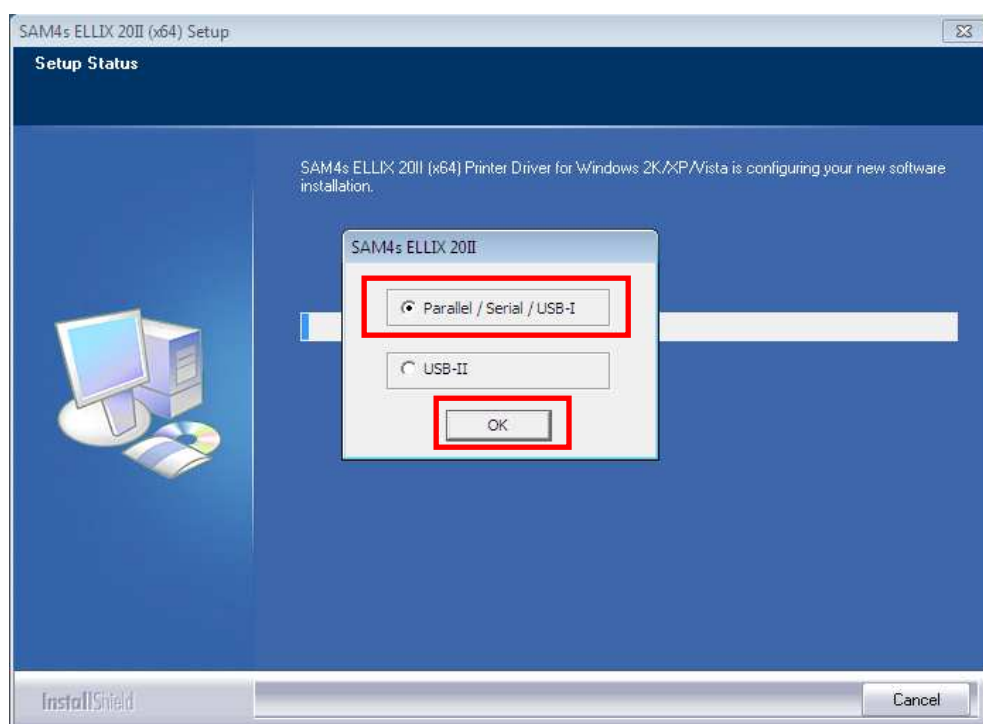
SAM4s ELLIX 20II Windows Driver is recommended using auto install/uninstall program. Below is its usage. Like the earlier version of SAM4s ELLIX 20II, install driver with Parallel (LPTn:) or Serial (COMn:), please follow progress below.



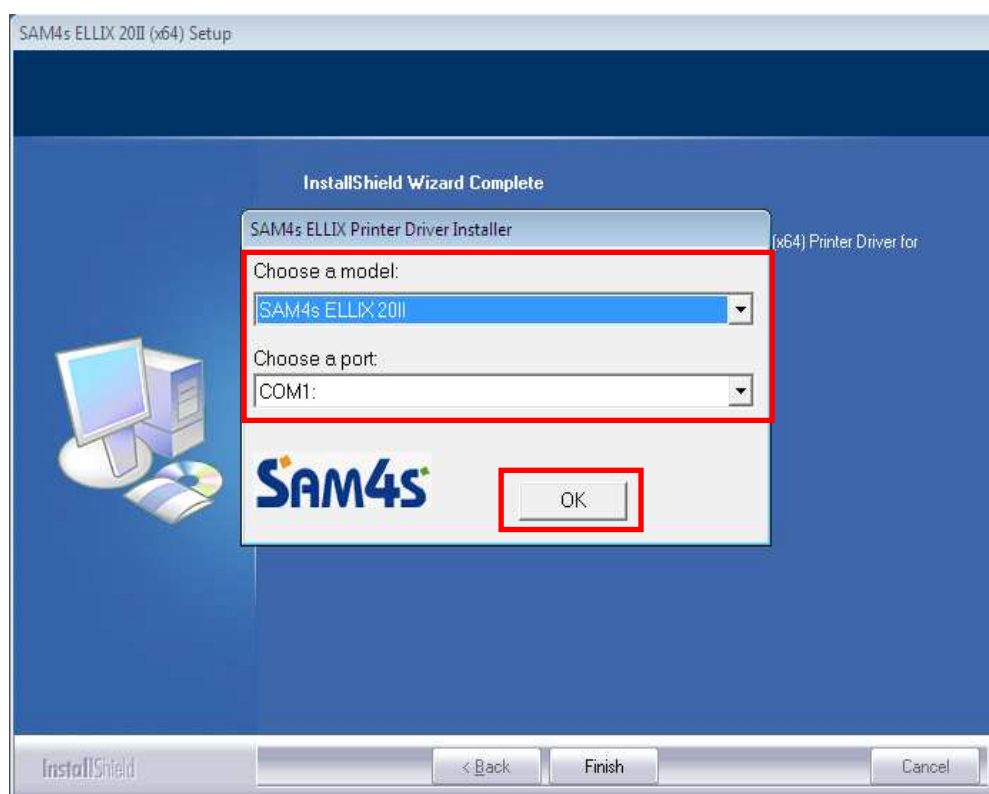
Execute the auto install/uninstall program. (Select the correct file on your system.)



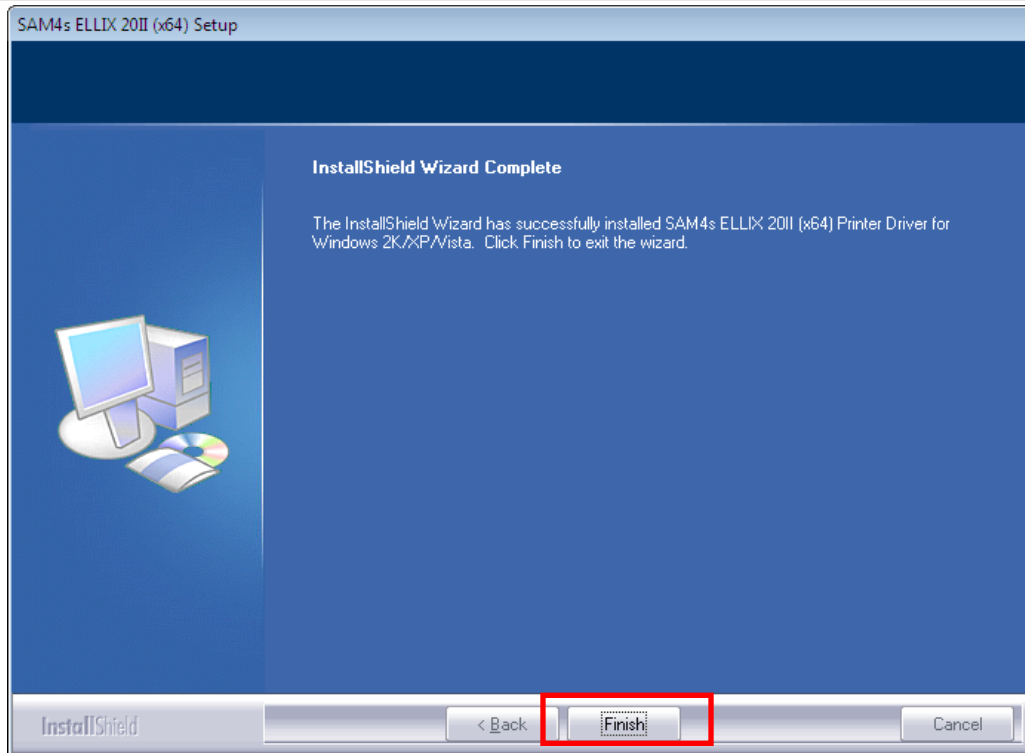
Wait for the progress to initialize.



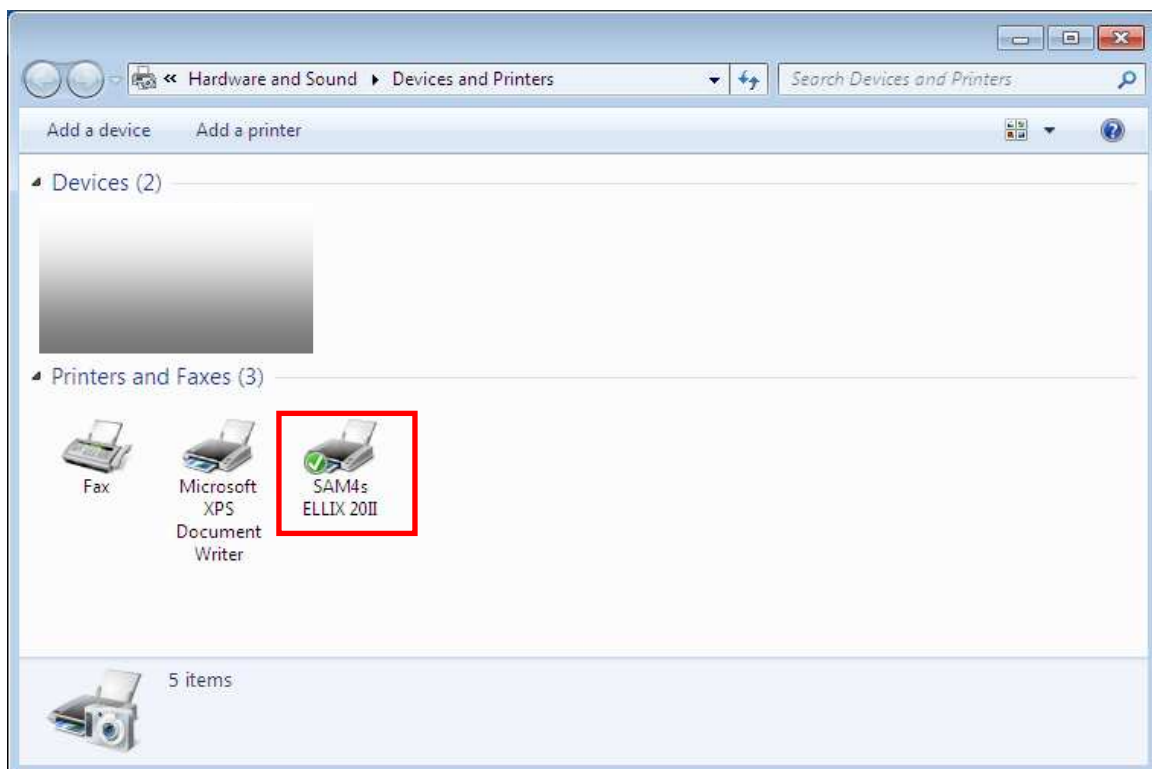
Select 'Parallel / Serial / USB-I' and press OK.



After selecting model and port you want to, (Model is SAM4s ELLIX 20II here), push OK button.



After install progress is done automatically, push the button of Finish.

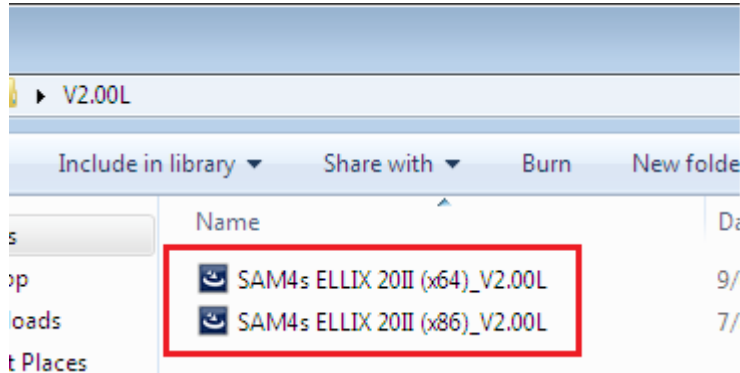


Check the printer folder in Control Panel for normal installation.

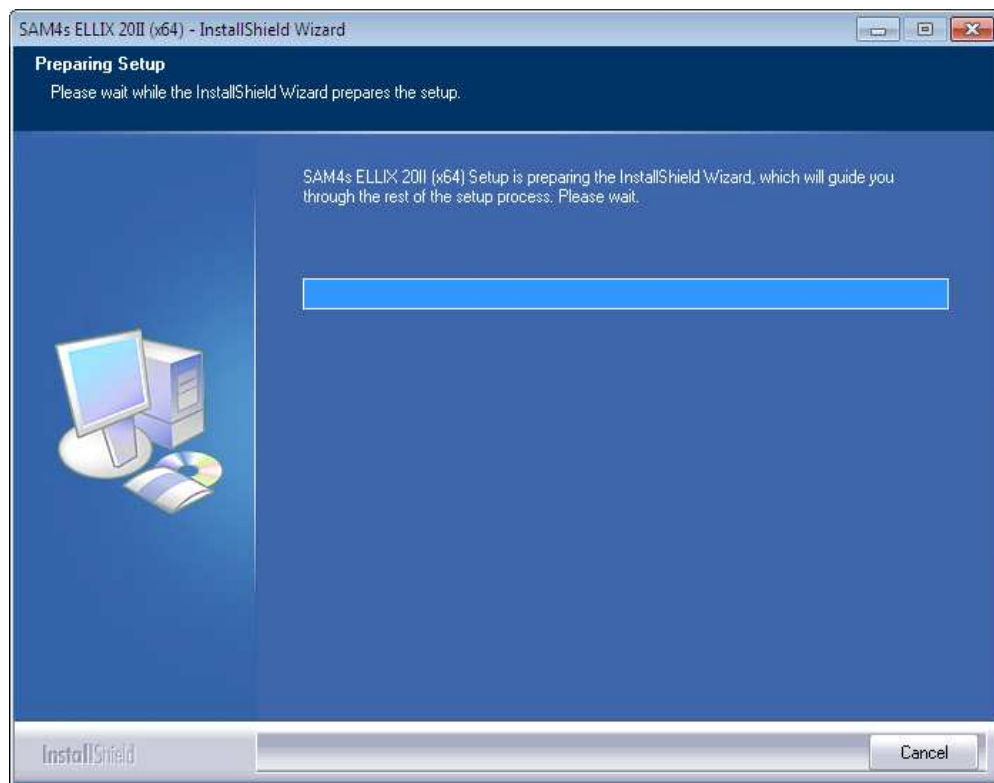
4.2 Automatic Un-installation

SAM4s ELLIX 20II Windows Driver is recommended using auto install/uninstall program. Below is its usage.

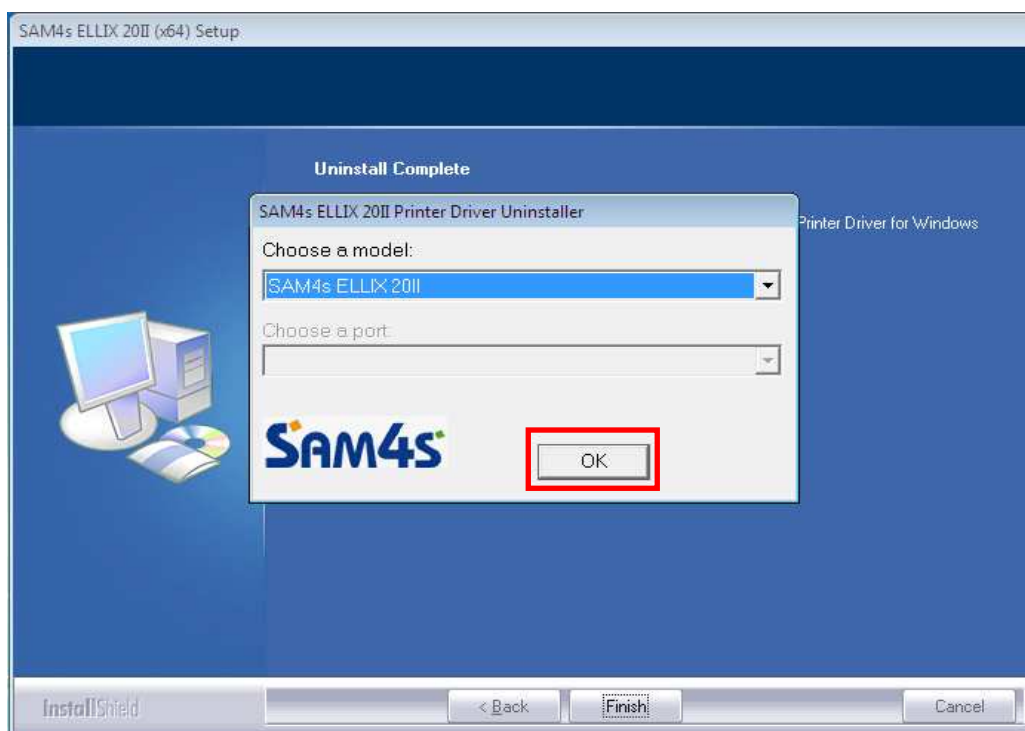
4.2.1 Using auto install/uninstall program



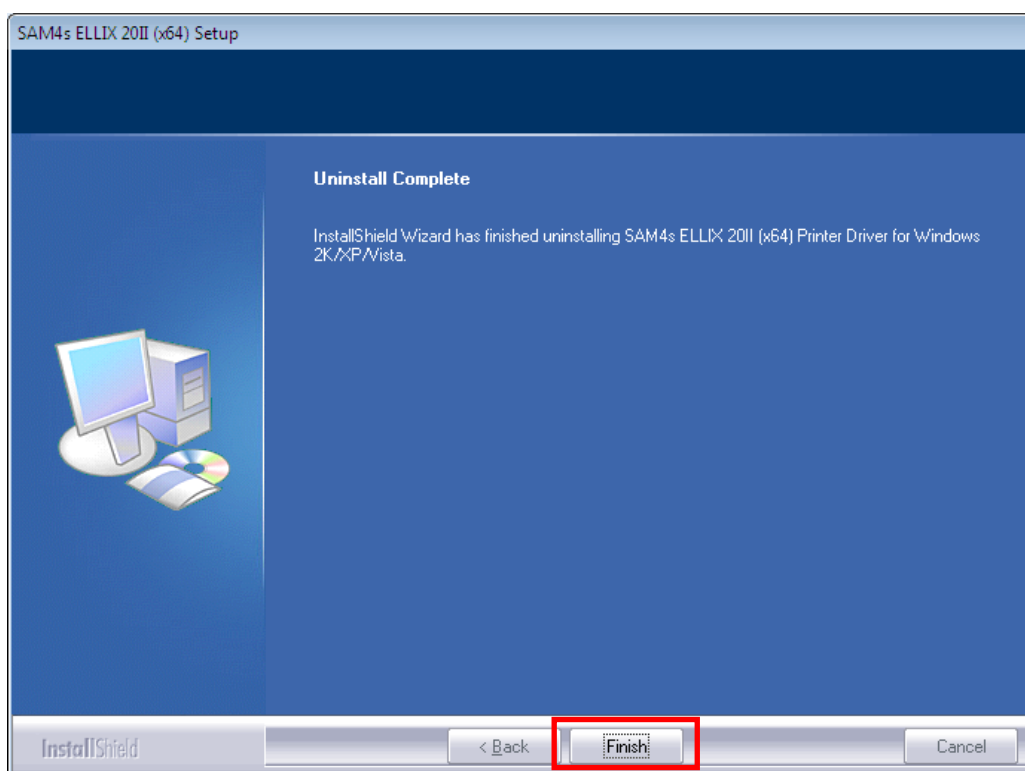
Execute the program auto install/uninstall which is the same program which it was used installing.
(Also select the correct file on your system.)



The program will do uninstall automatically.

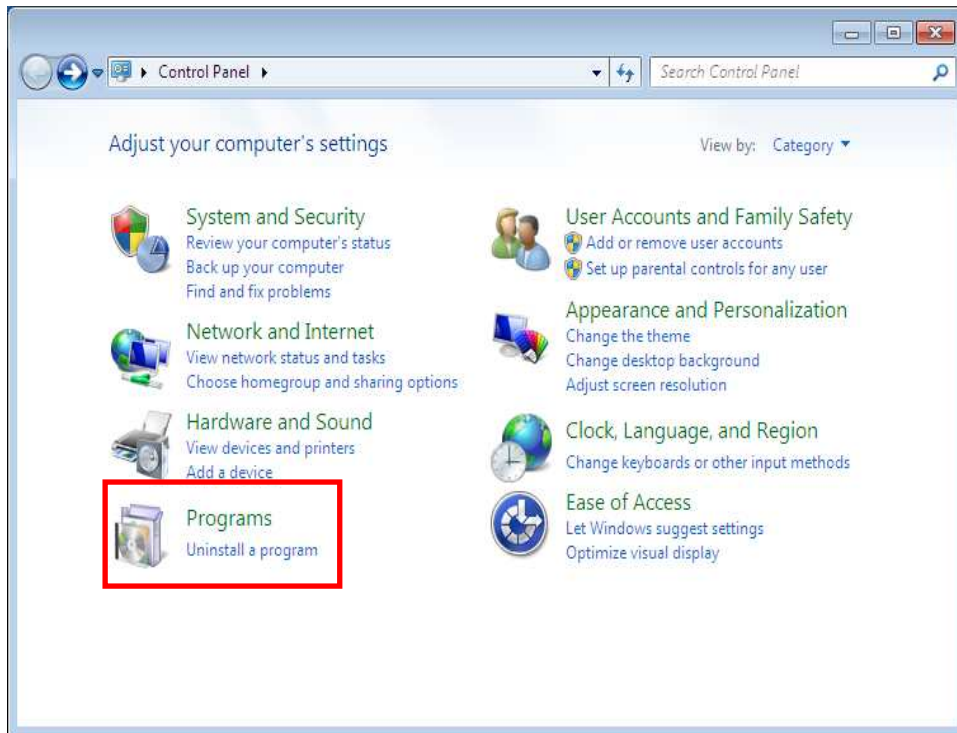


As push OK button, uninstall the SAM4s ELLIX 20II printer driver.

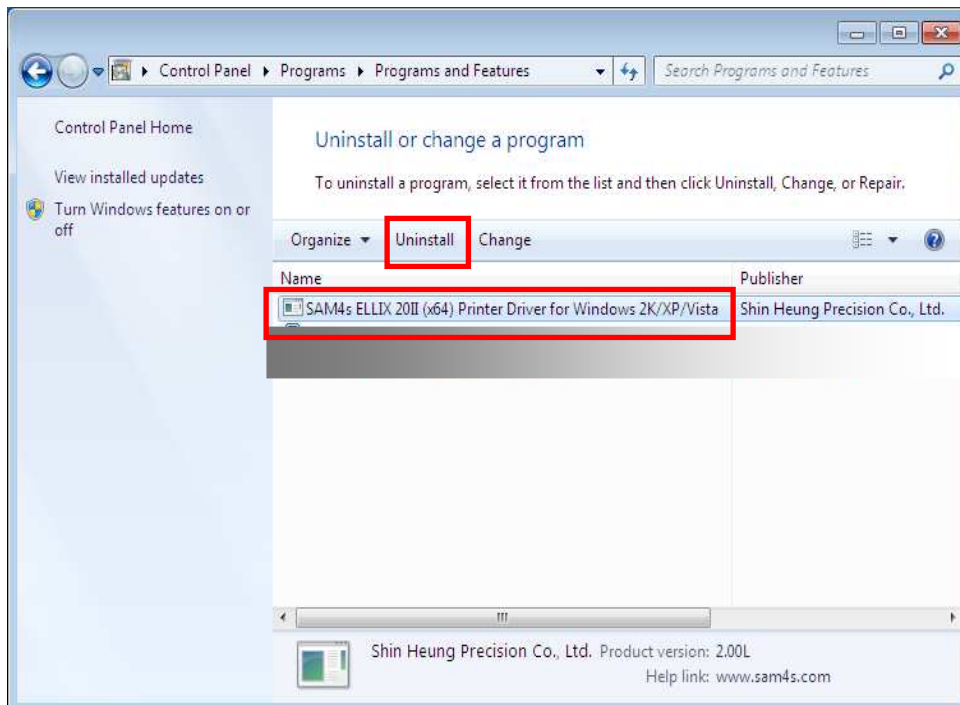


Then push the Finish button, so uninstall progress will complete.

4.2.2 Using Control Panel

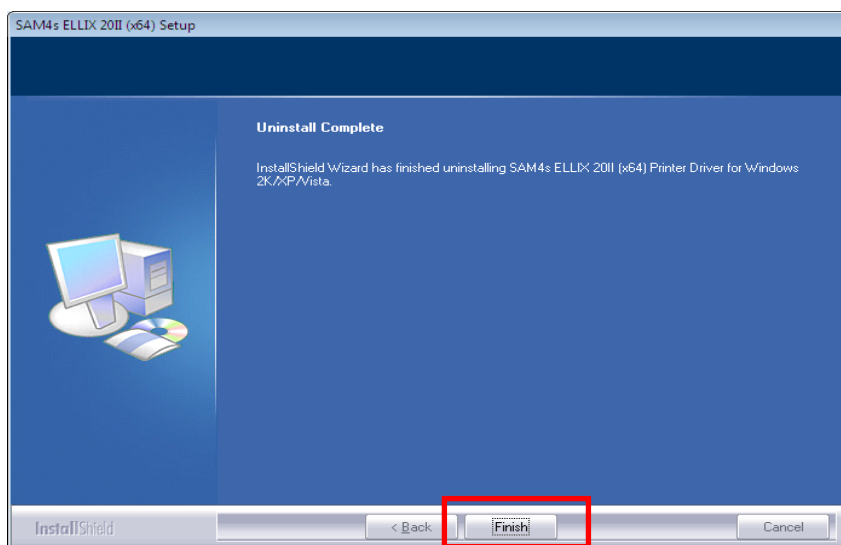
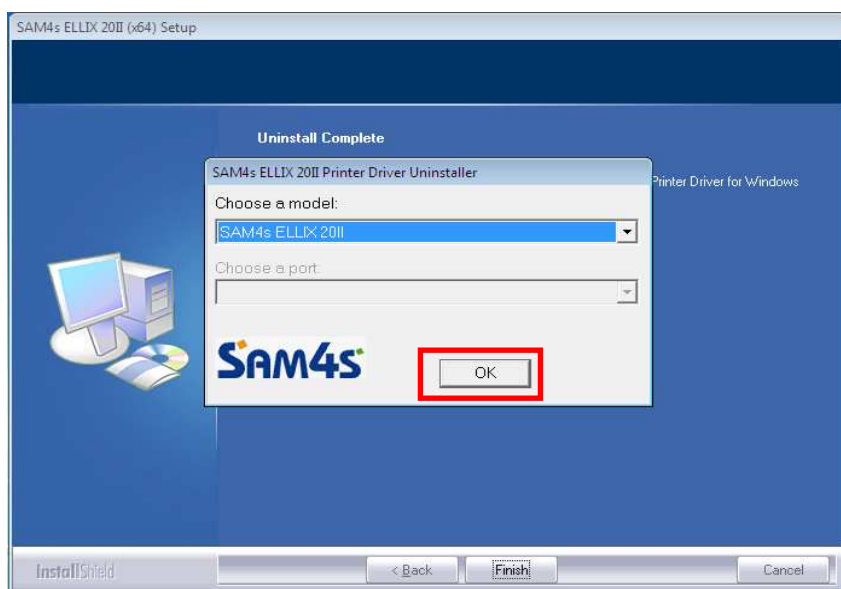
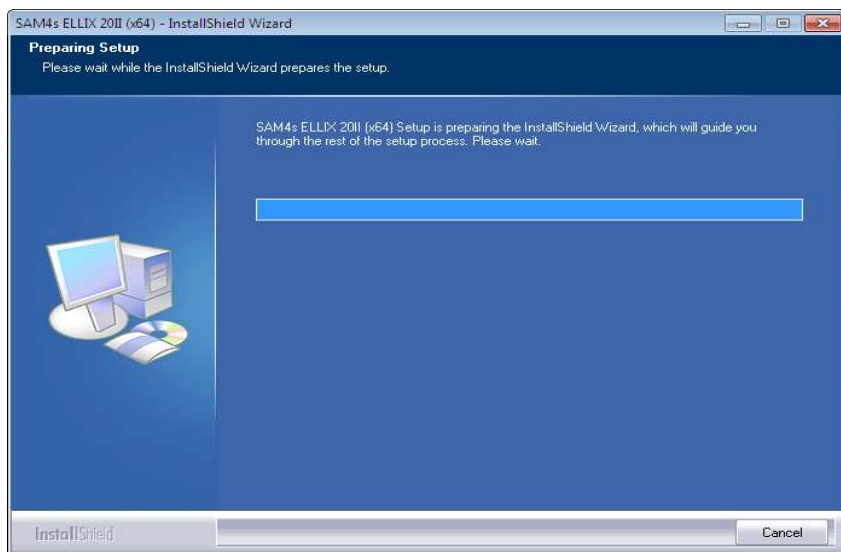


Open Control Panel folder and then select 'Programs (Uninstall a program)'.



In Lists, select SAM4s ELLIX 20II Printer Driver for Windows 2K/XP/Vista and select Uninstall.

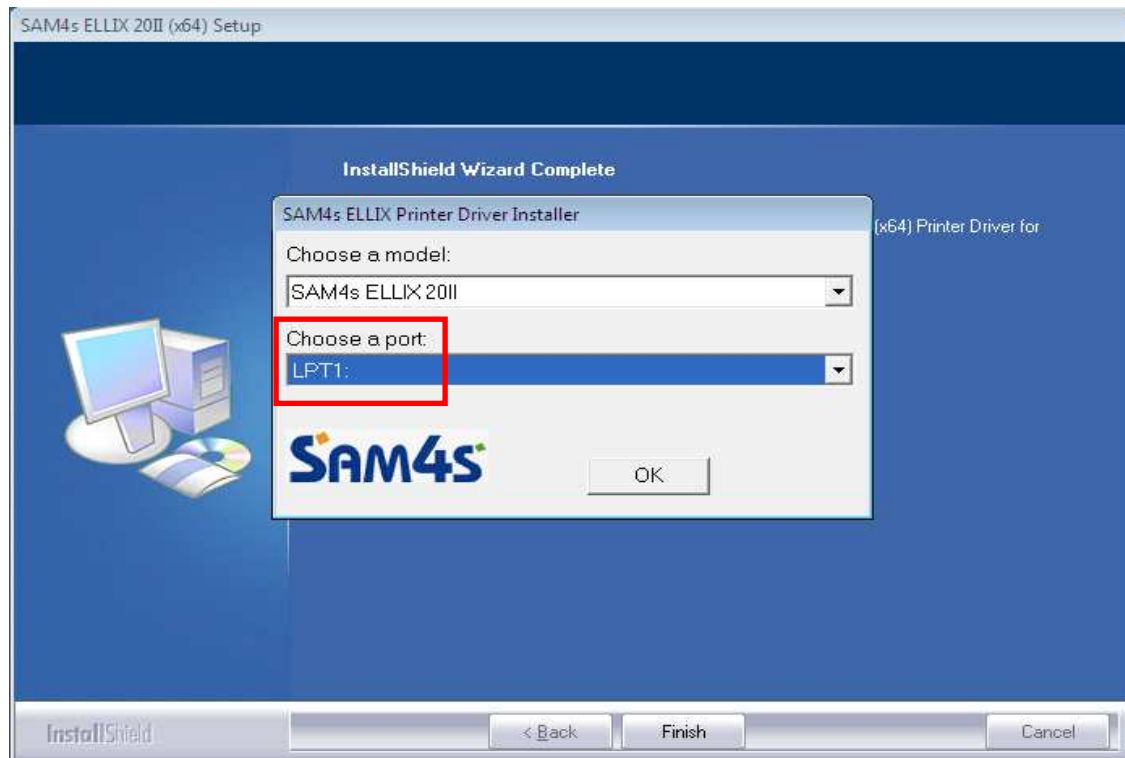
Below is the same with explanation in 4.2.1.



4.3 Setting SAM4s ELLIX 20II with Parallel Port (LPTn:)

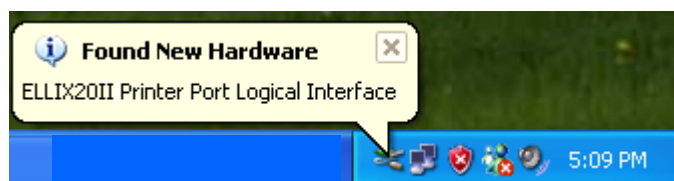
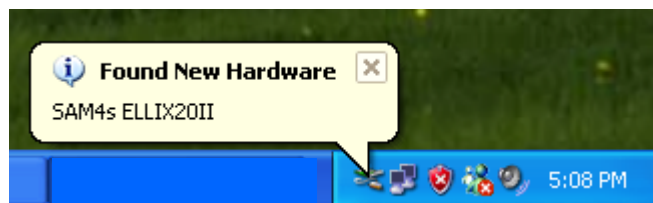
For connecting SAM4s ELLIX 20II to Parallel Port, ELLIX 20II printer should be connected with Parallel Port cable to LPT1: of PC. If SAM4s ELLIX 20II is installed as LPT1:, turn on printer's power or restart OS system. (This progress is only needed once when SAM4s ELLIX 20II will be installed for the first time.) Follow ways below to install each of OS.

4.3.1 Windows XP

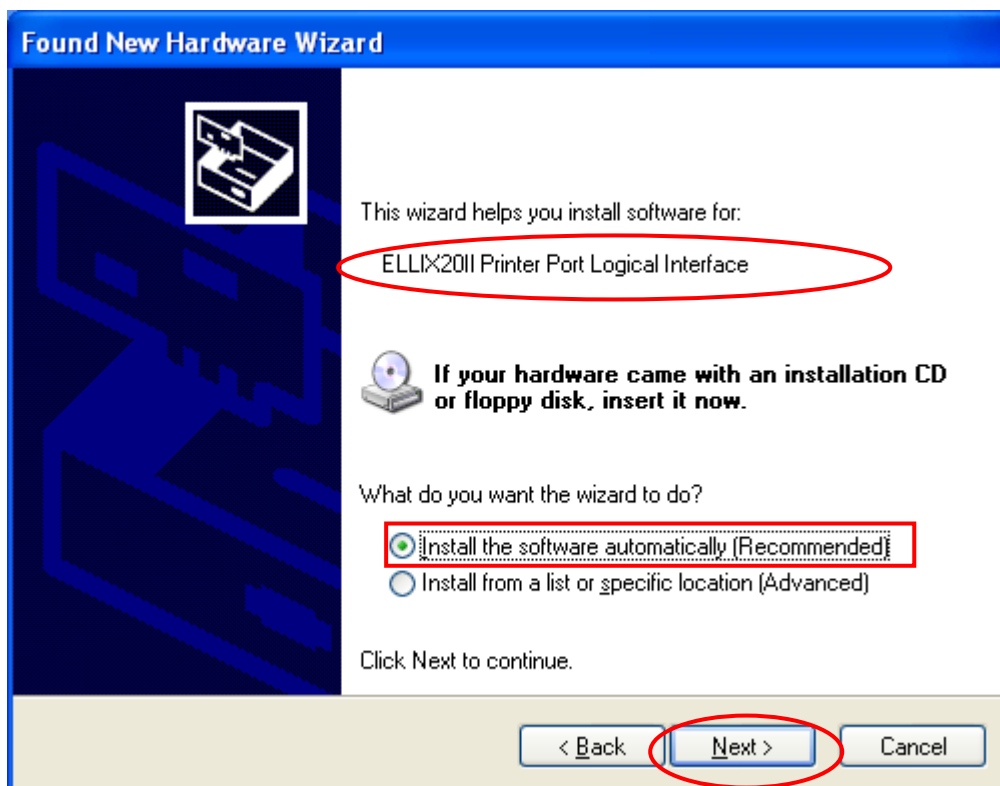
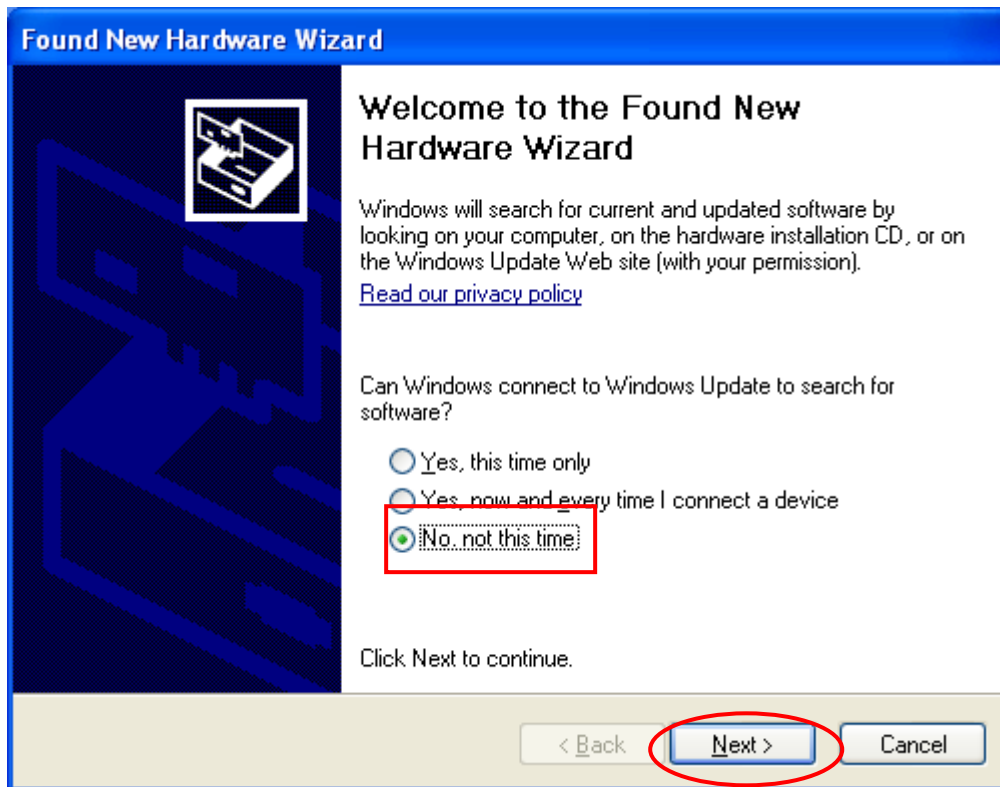


Ps) Installing steps remained are omitted.

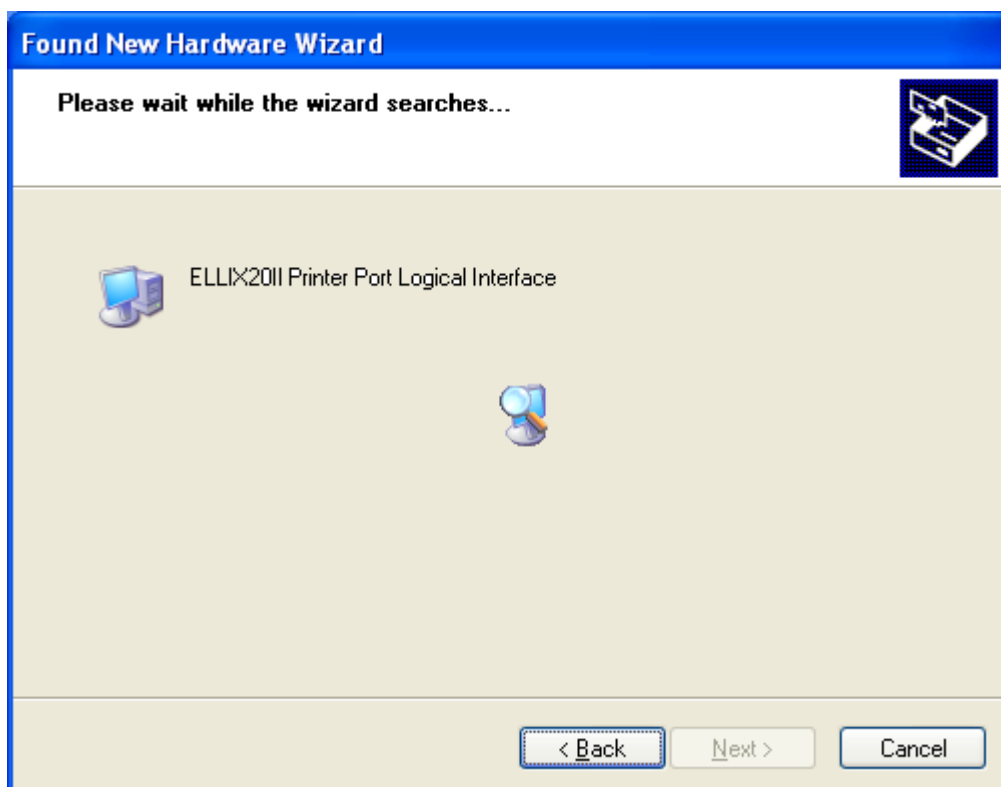
Restart OS system after installing Windows Driver and then you will get the message like below.



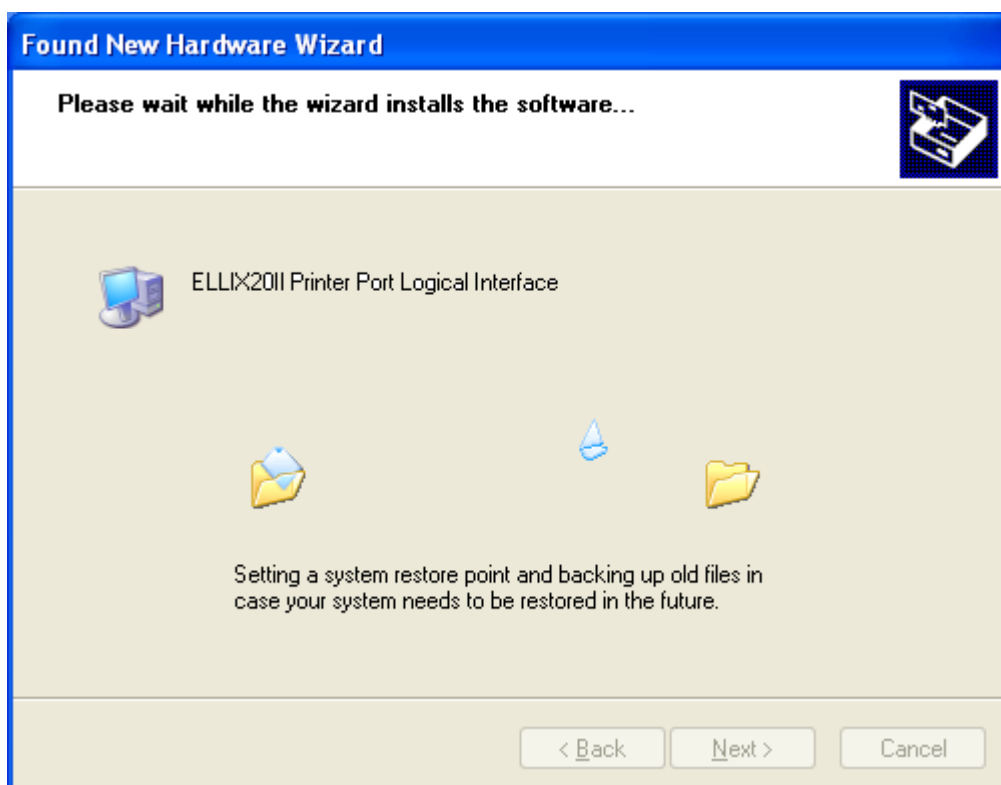
'Found New Hardware Wizard' is popped up automatically.



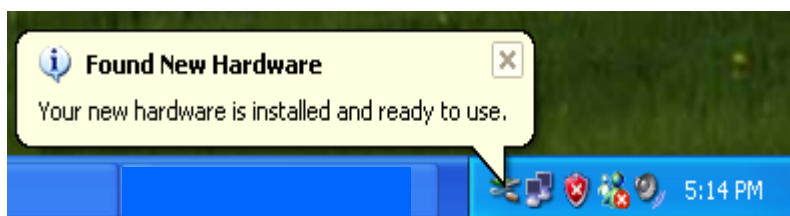
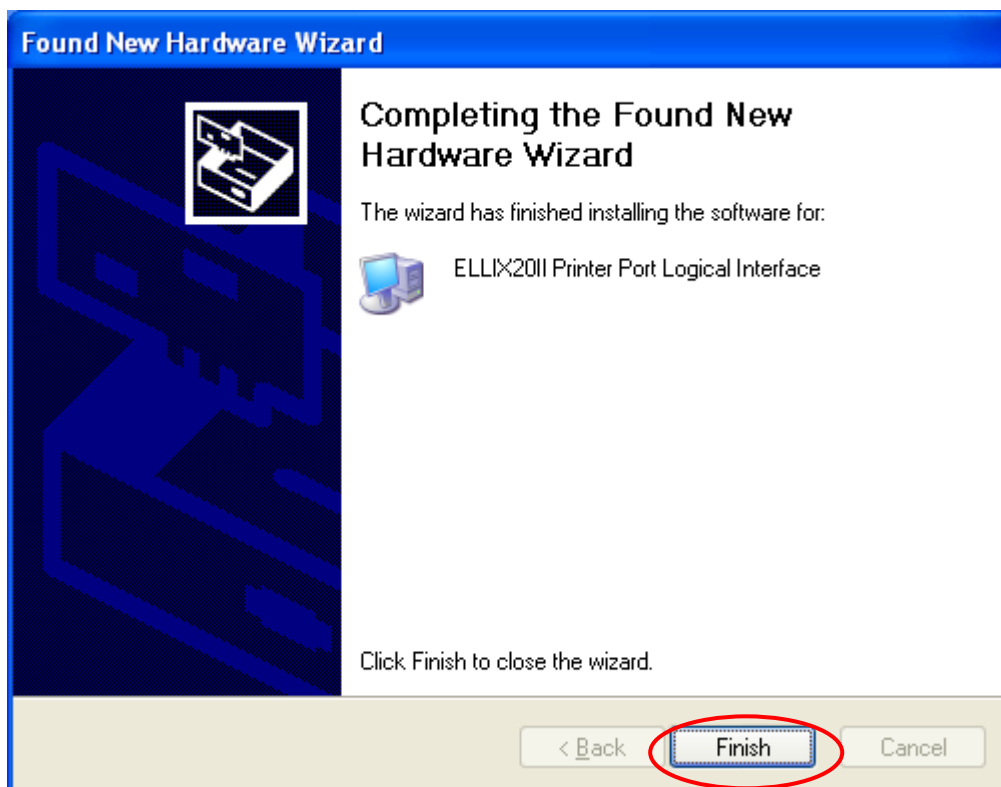
When 'Found New Hardware Wizard' is popped up, check a string, 'ELLIX20II Printer Port Logical Interface' and press Next. OS will search a proper driver automatically.



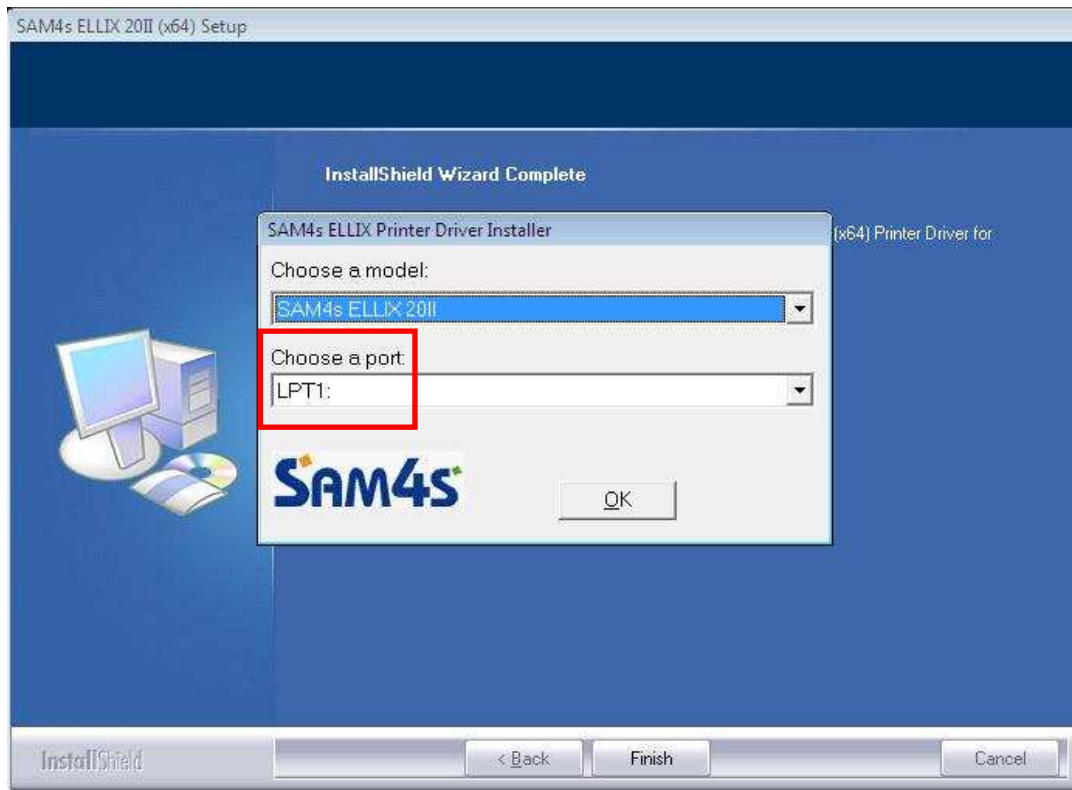
If OS searches a matched driver, it will be installed automatically.



Press Finish to complete install steps.

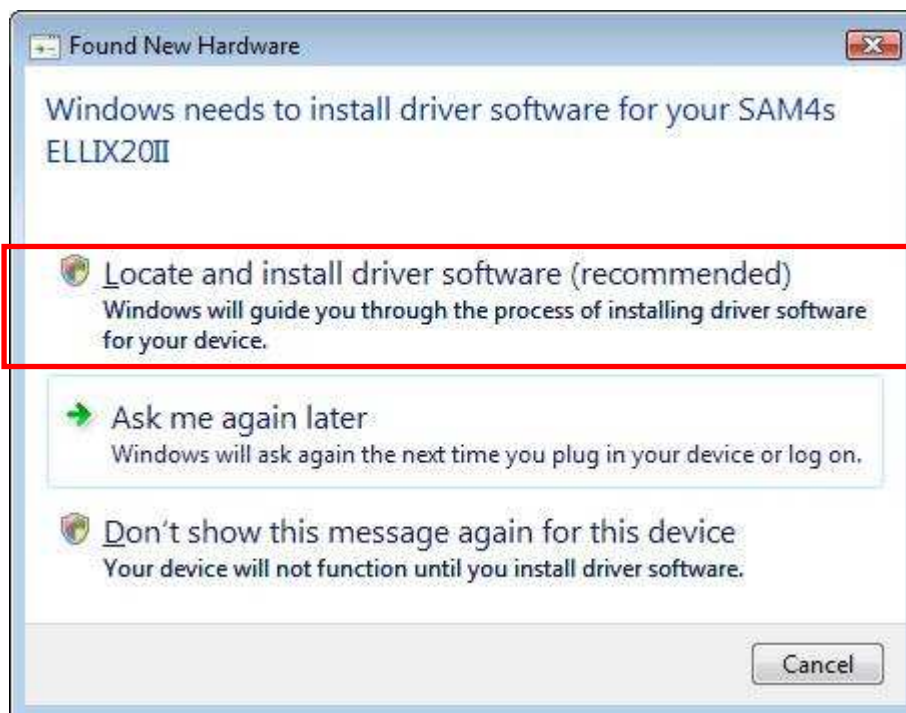


4.3.2 Windows Vista

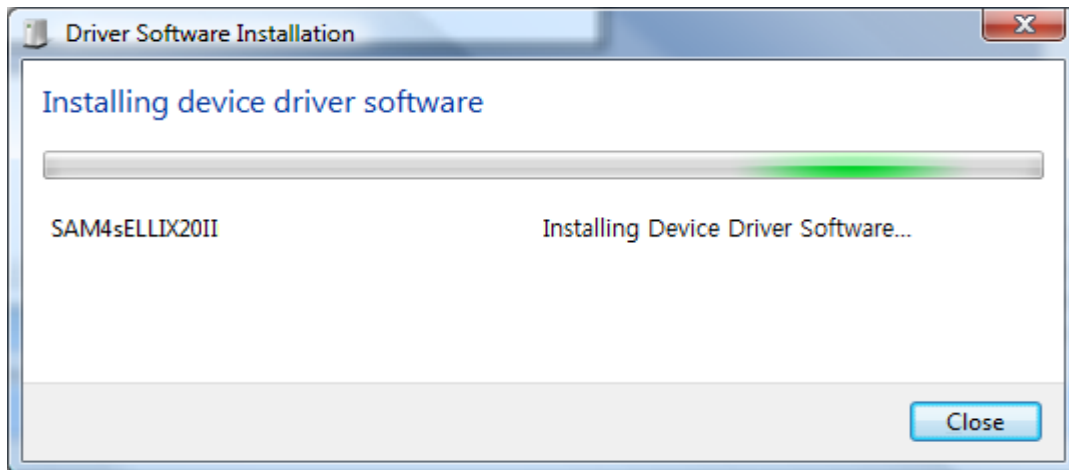


Ps) Installing steps remained are omitted.

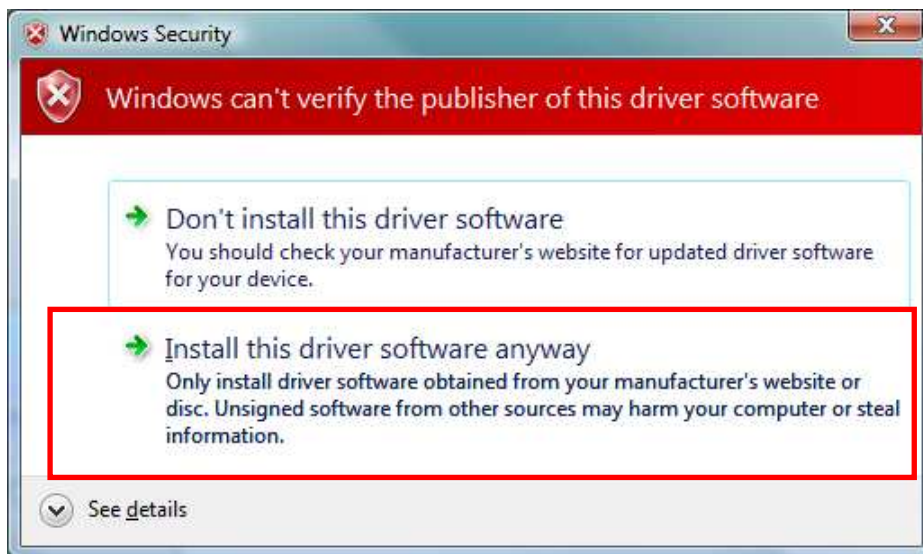
Restart OS system after installing Windows Driver and then you will get the message like below.



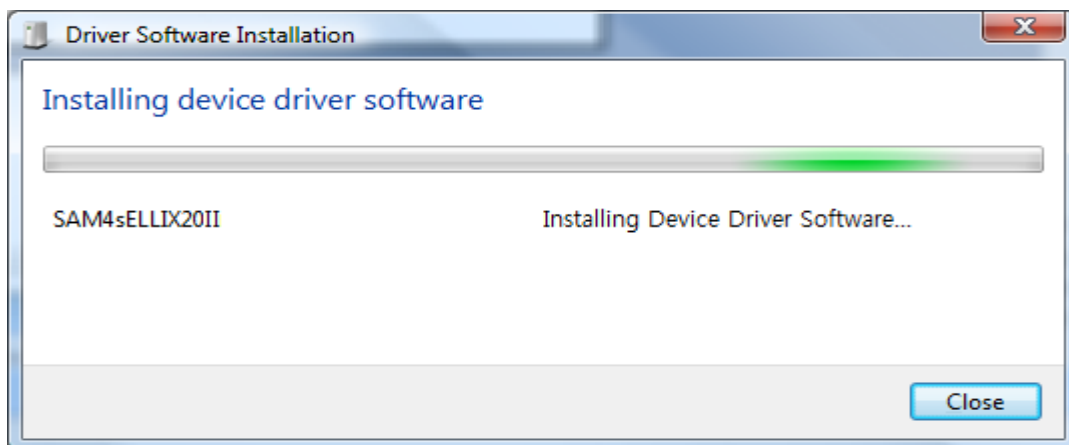
Select 'Locate and install driver software (recommended)'.



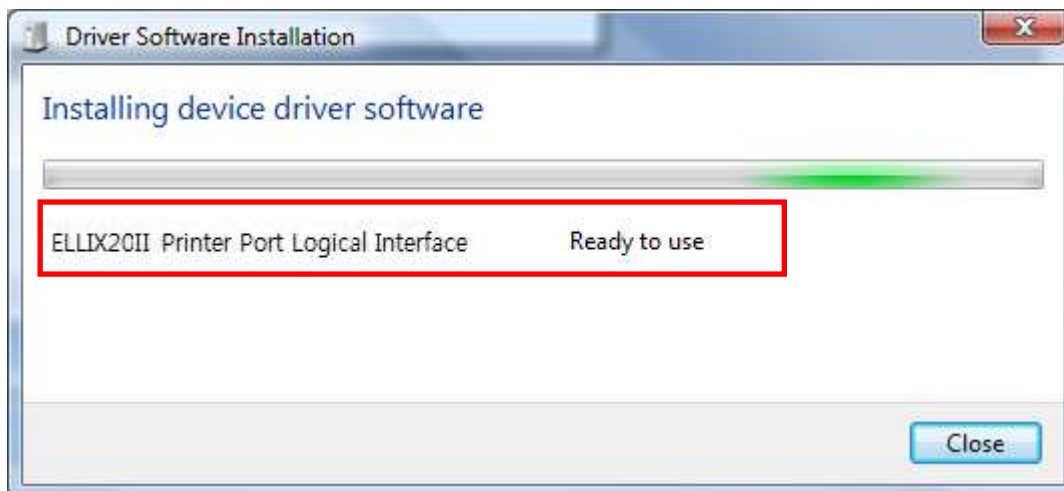
Windows Vista will search a matching device automatically like upper shot.



Select 'Install this driver software anyway'.

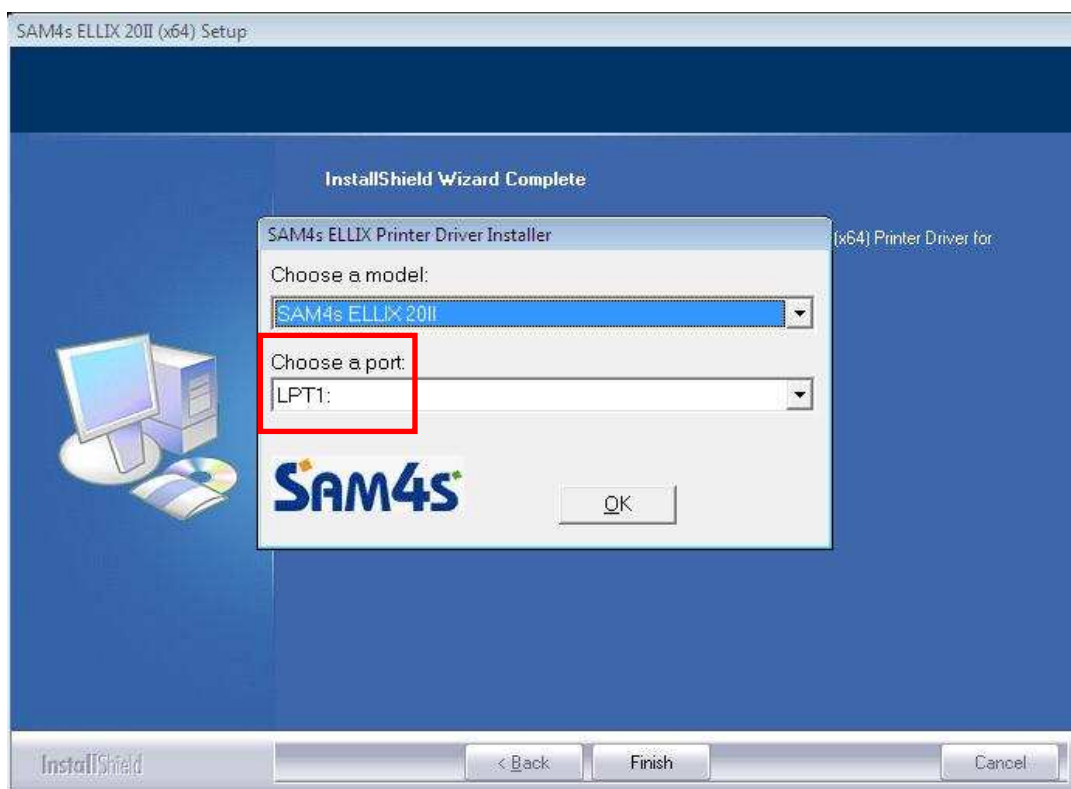


After searching device once more,



You may check the device installation.

4.3.3 Windows 7



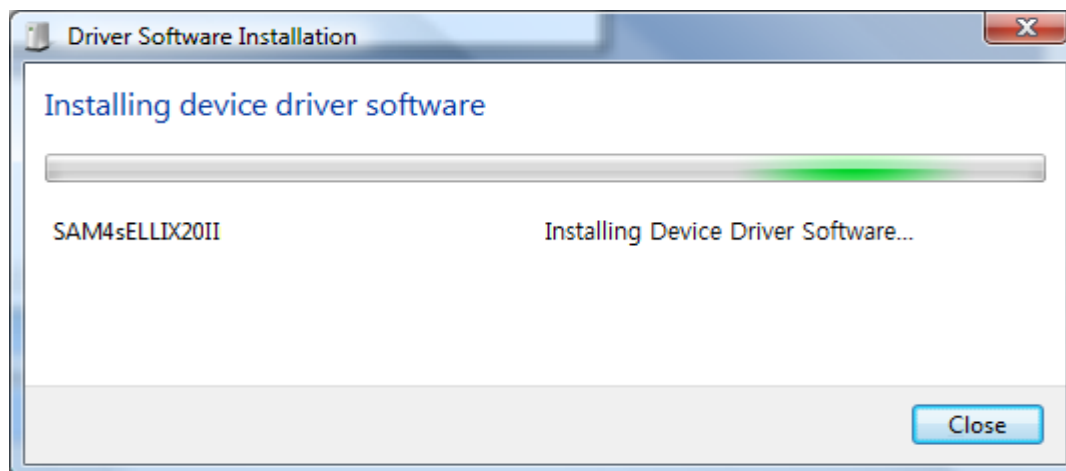
Ps) Installing steps remained are omitted.

Restart OS system after installing Windows Driver and then you will get the message like below.

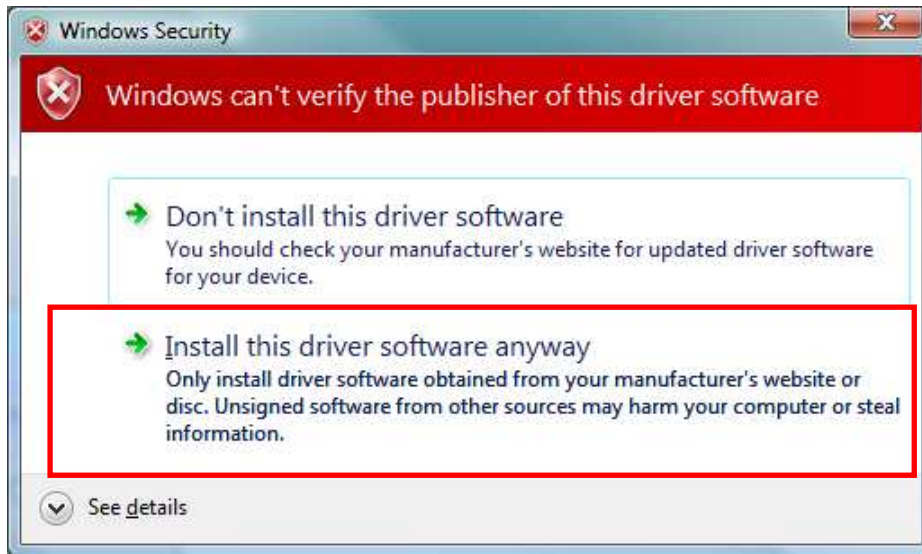
(These steps can be skipped by Windows 7. That is, 'ELLIX20II Printer Port Logical Interface' driver will be quietly installed and will be worked.)



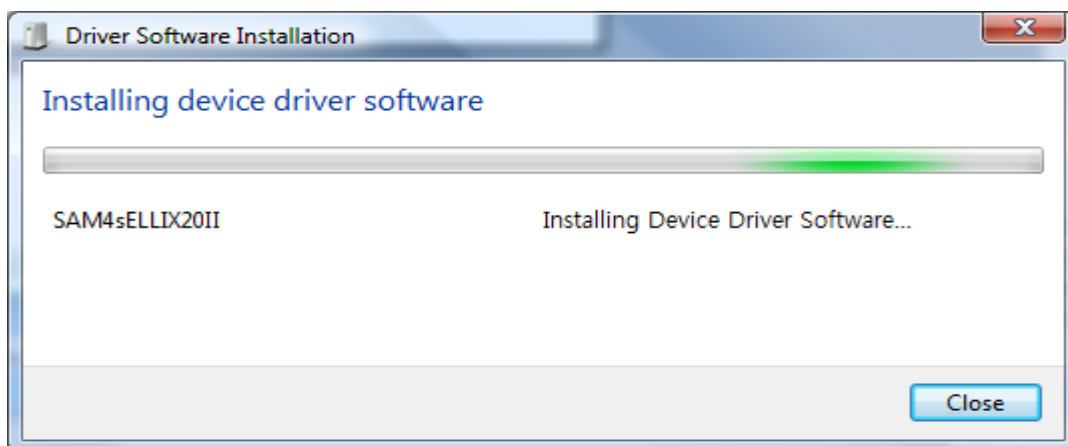
Select 'Locate and install driver software (recommended)'.



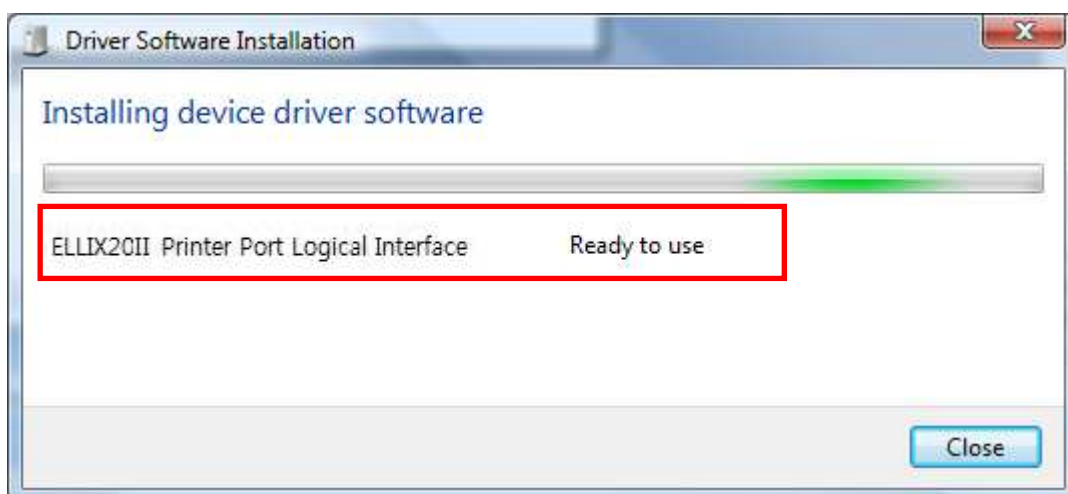
Windows Vista will search a matching device automatically like upper shot.



Select 'Install this driver software anyway'.



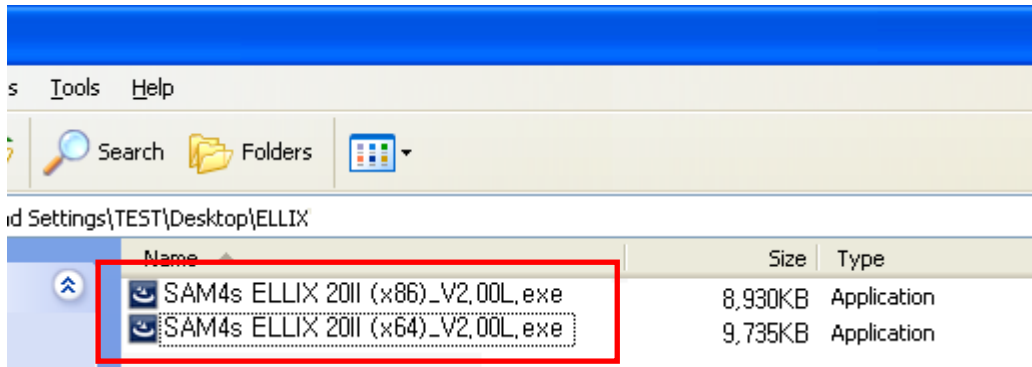
After searching device once more,



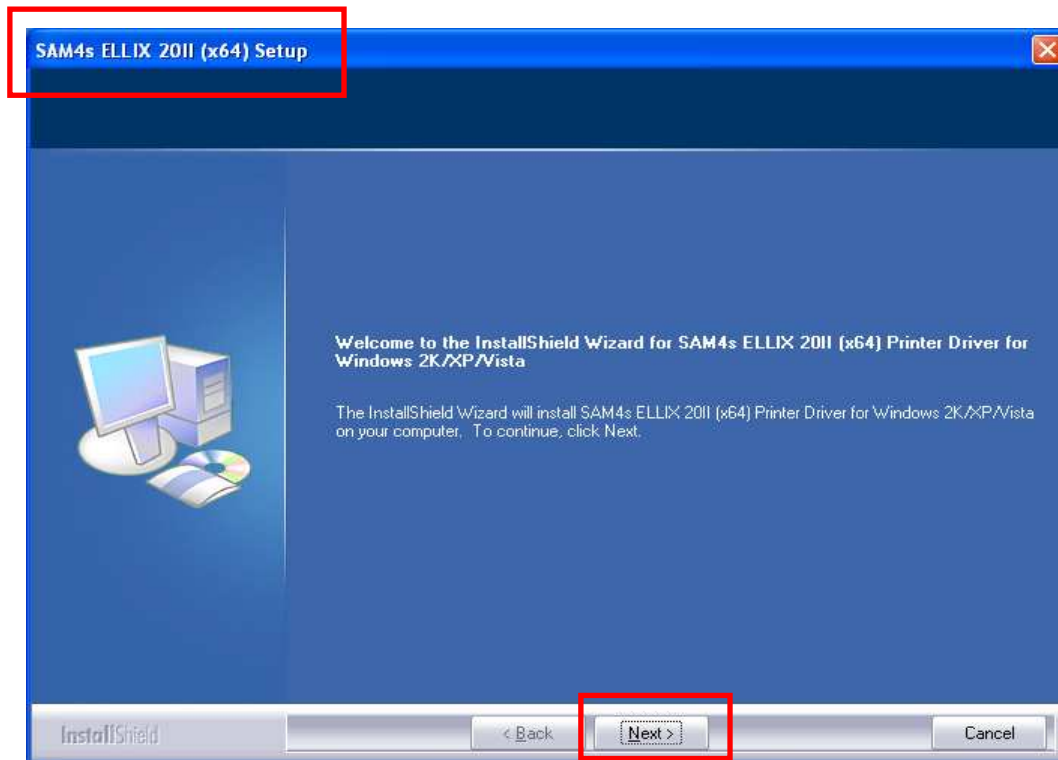
You may check the device installation.

4.4 Setting SAM4s ELLIX 20II with USB Port

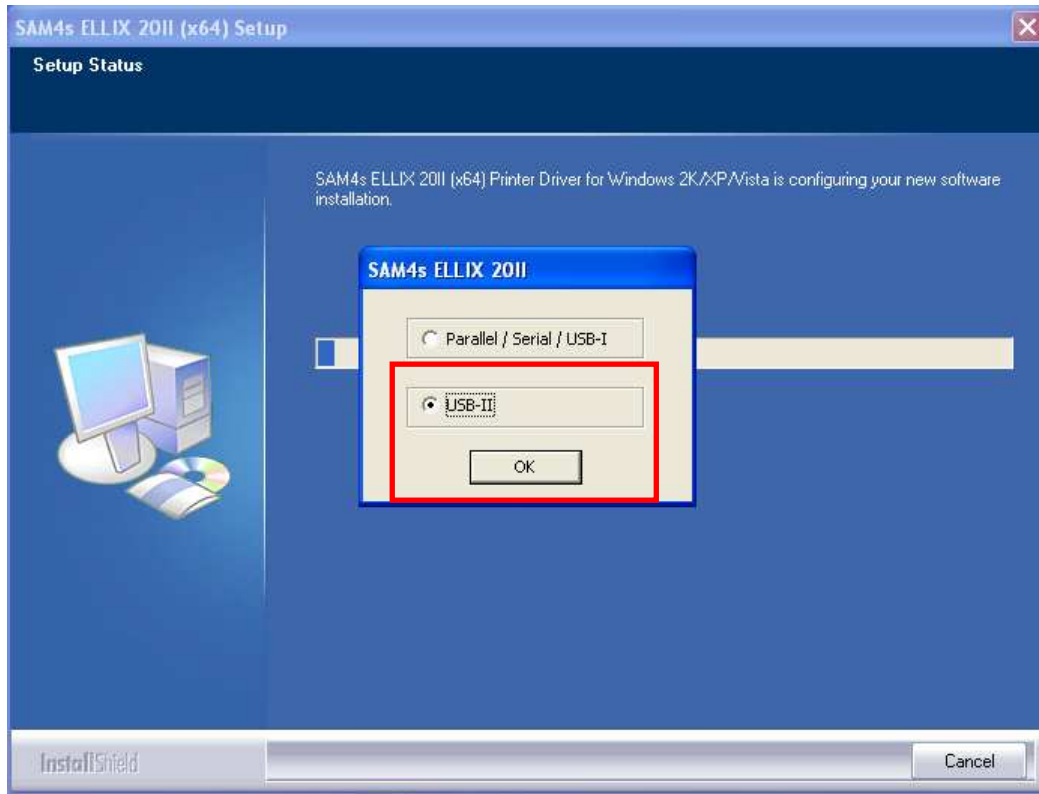
4.4.1 Windows XP



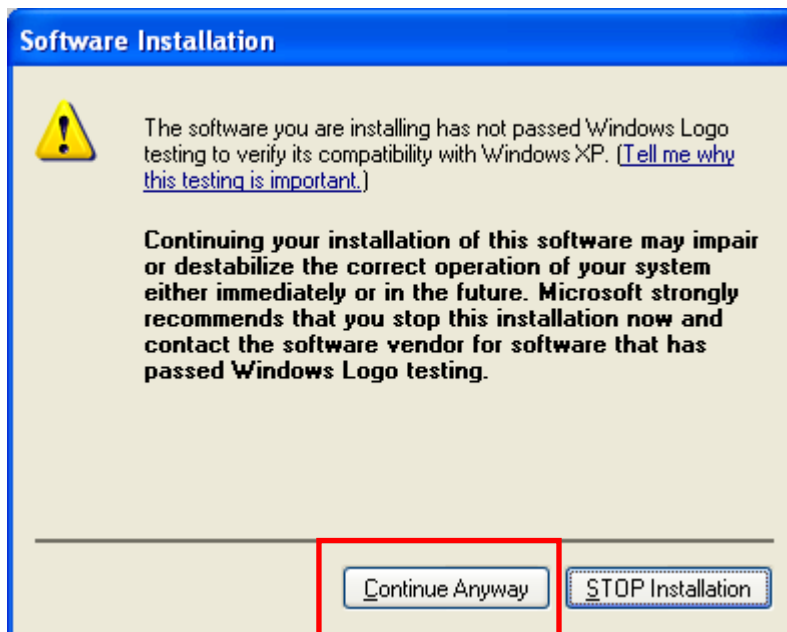
Execute the auto install/uninstall program. (Select the correct file on your system.)



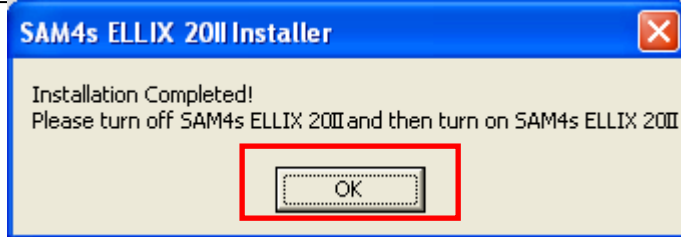
Press button 'Next'.



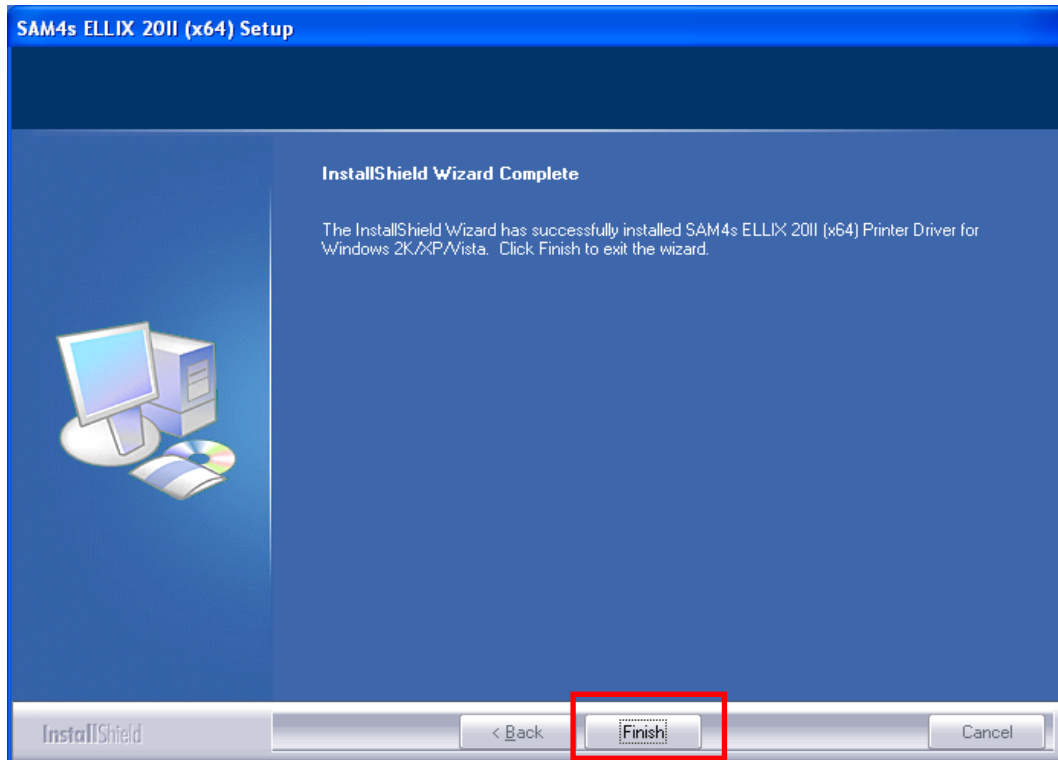
Select 'USB' and then press OK.



Select 'Continue Anyway'. This does not have any influences on OS, you may ignore it.

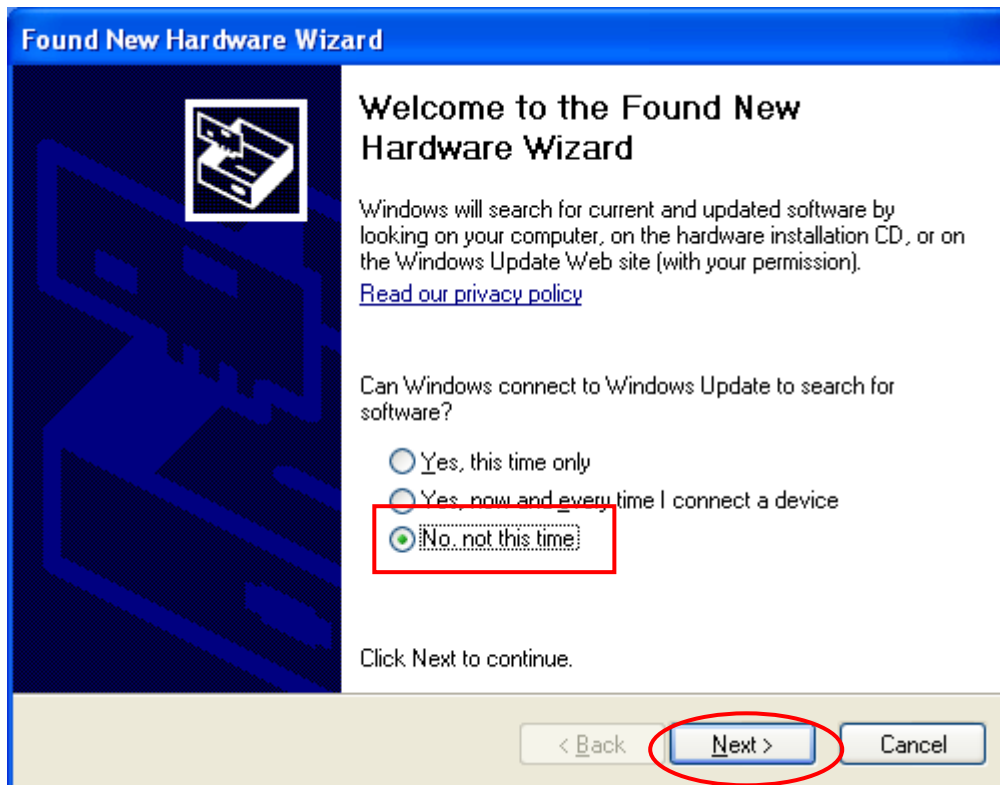


A few second later, message like upper is popped up. Turn on printer and press OK.



Press Finish button for completing installation.

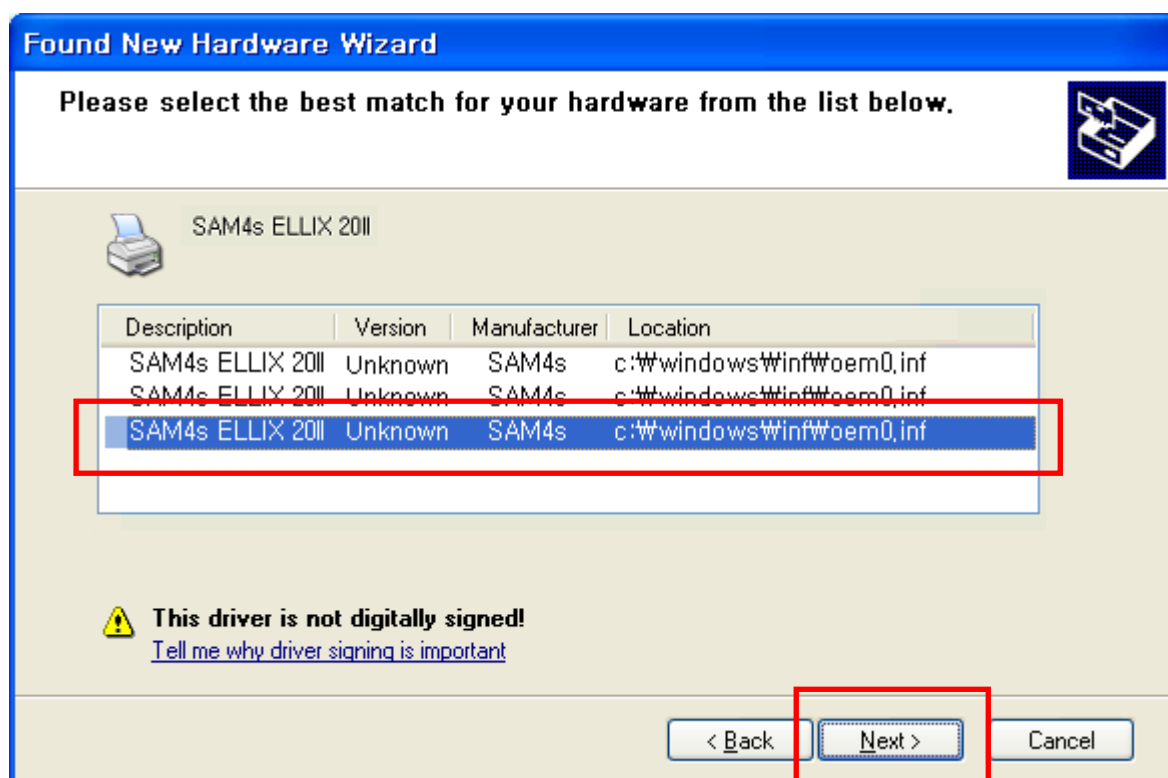




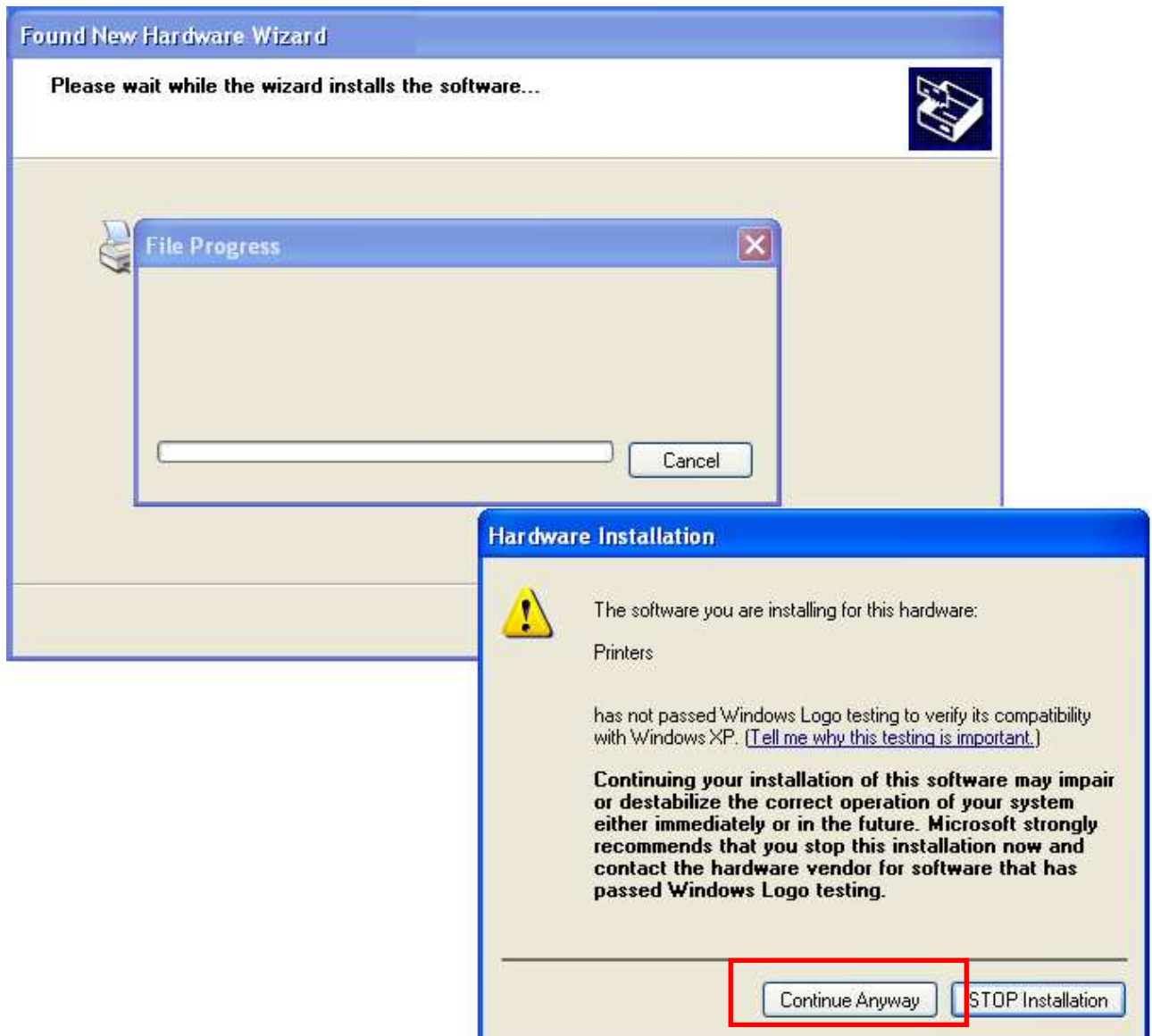
Press button 'Next'.



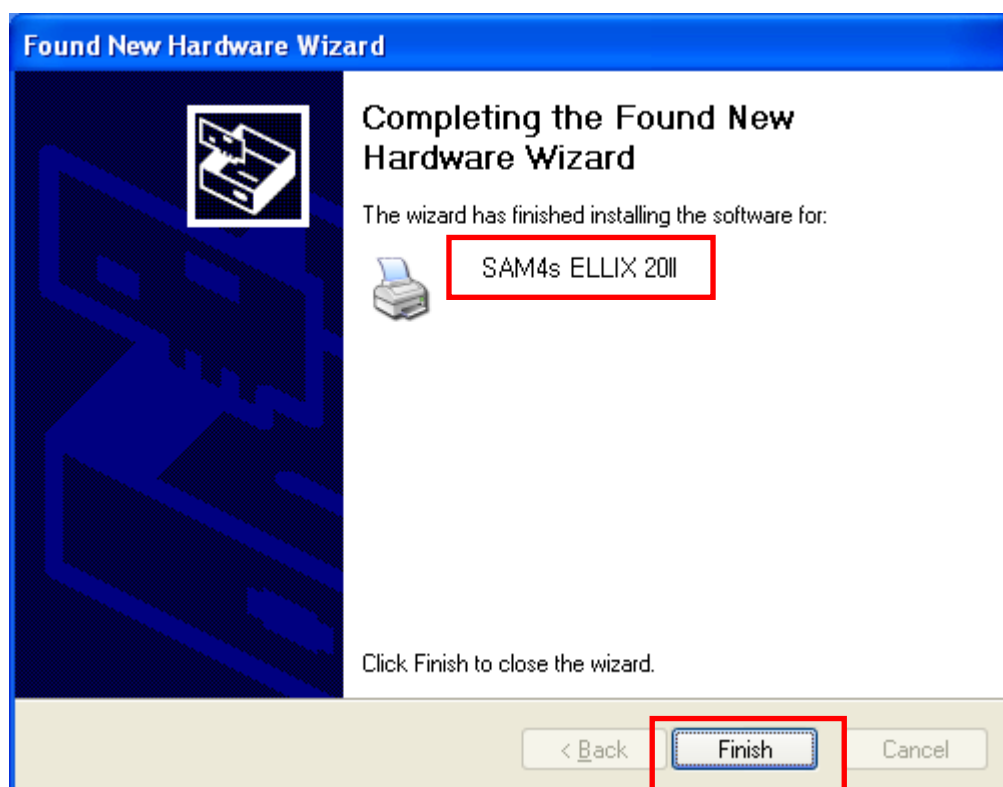
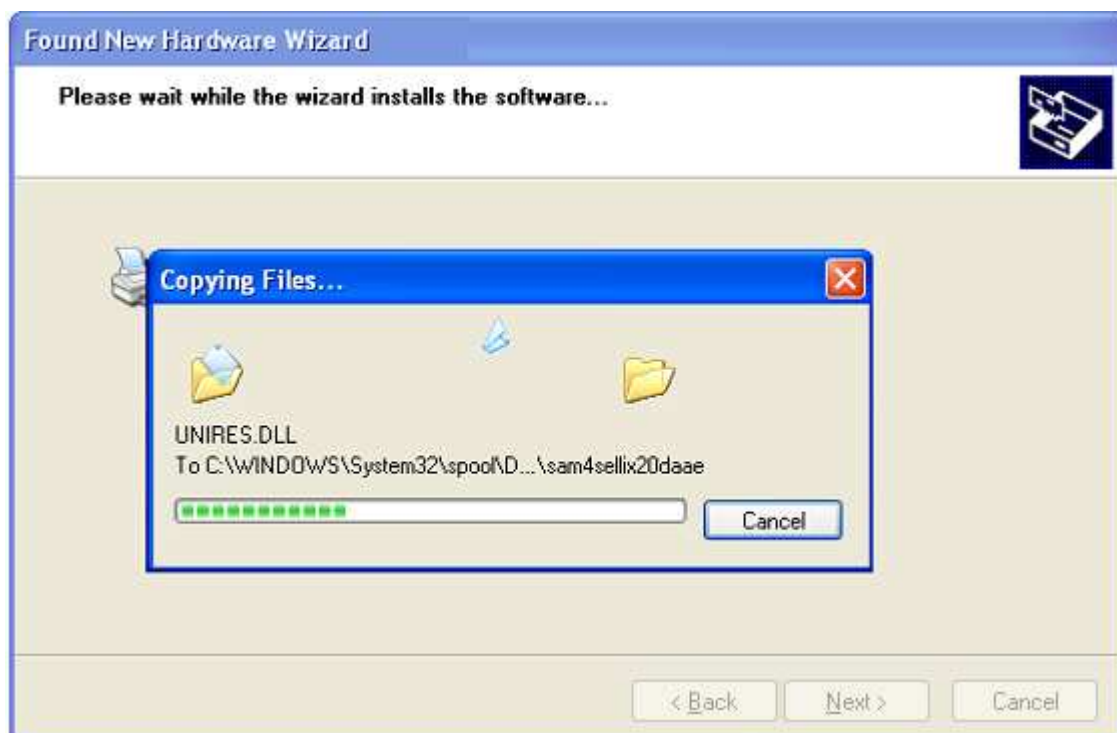
Windows system will search a matching driver automatically.



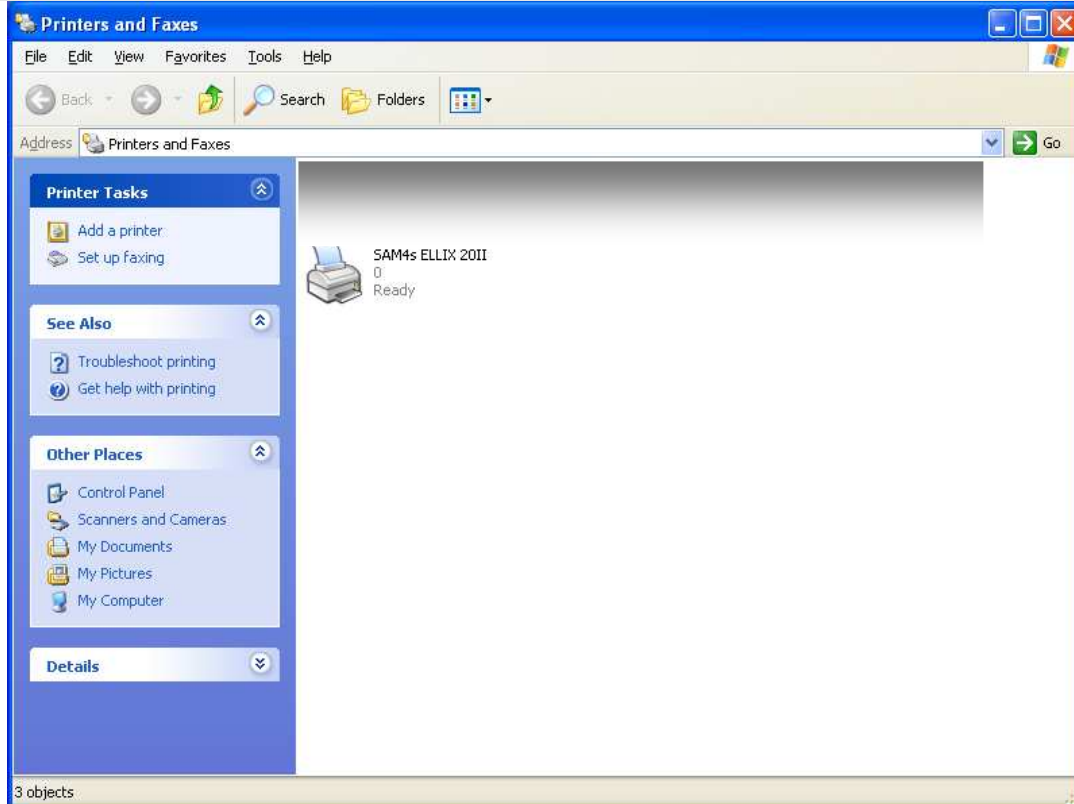
Select inf file and then hit 'Next'.



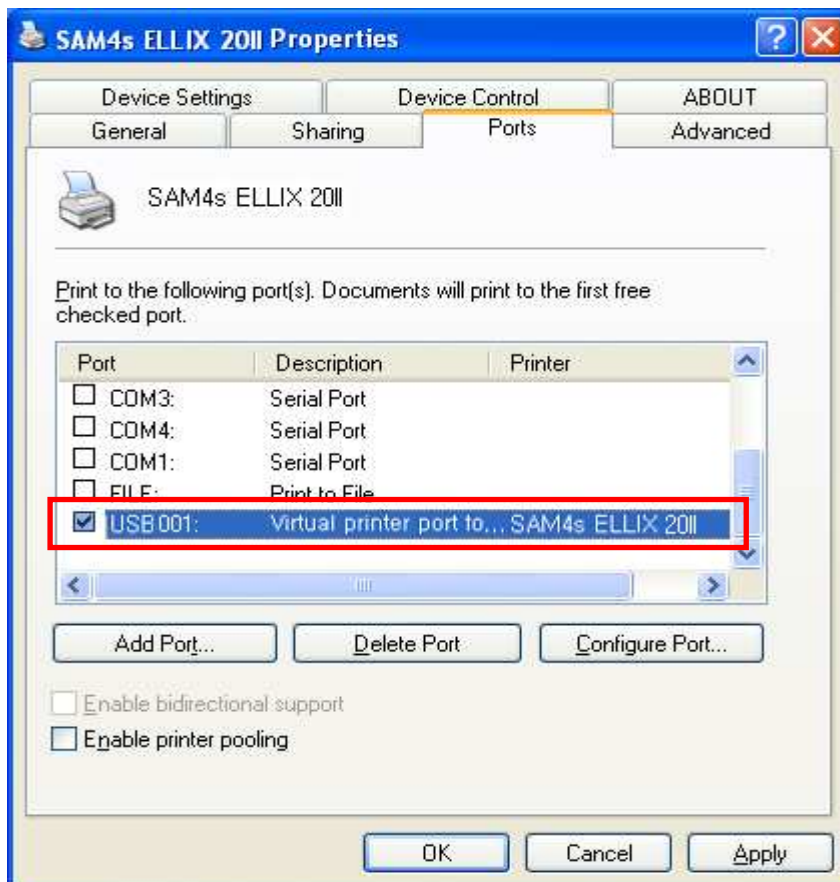
Select 'Continue Anyway'. This does not have any influences on OS, you may ignore it.



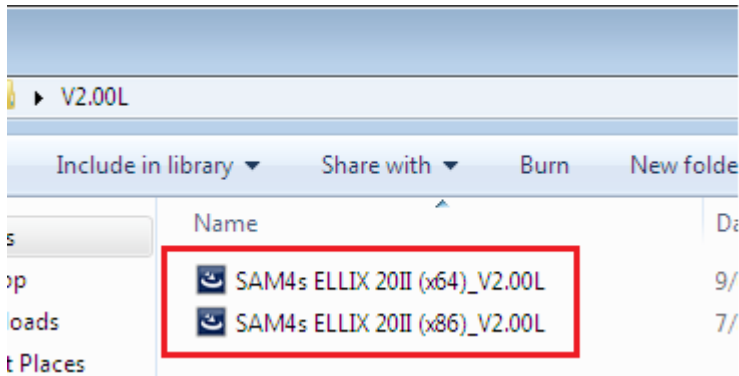
Press button 'Finish' for completing installation.



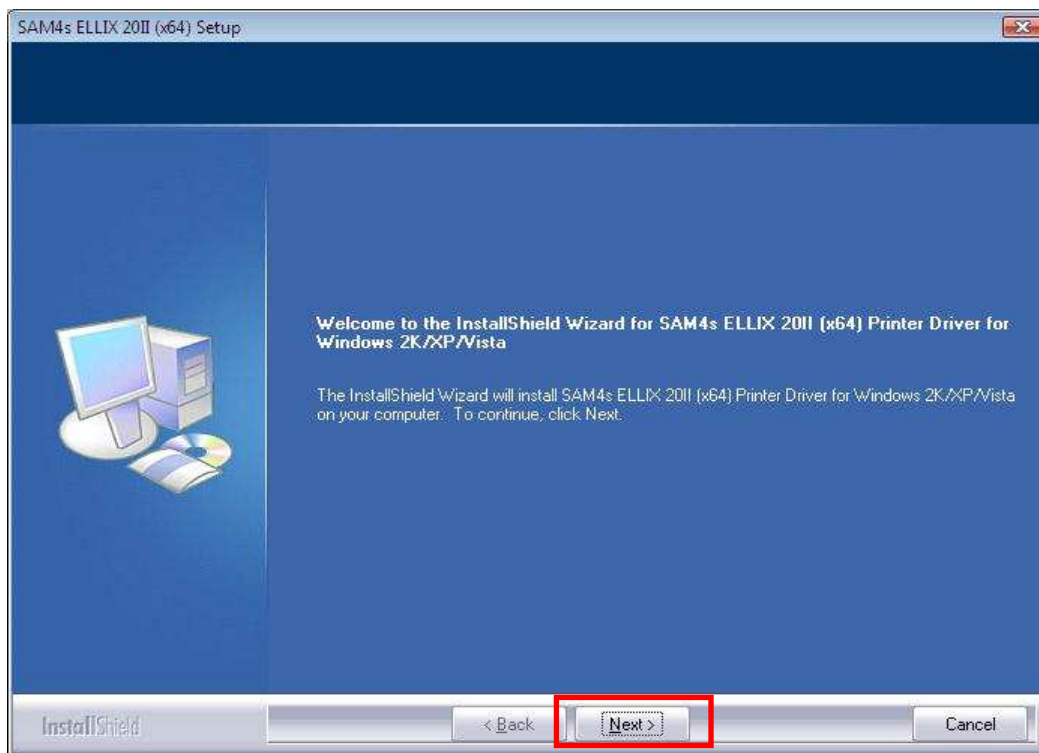
Open SAM4s ELLIX 20II Properties and check port.



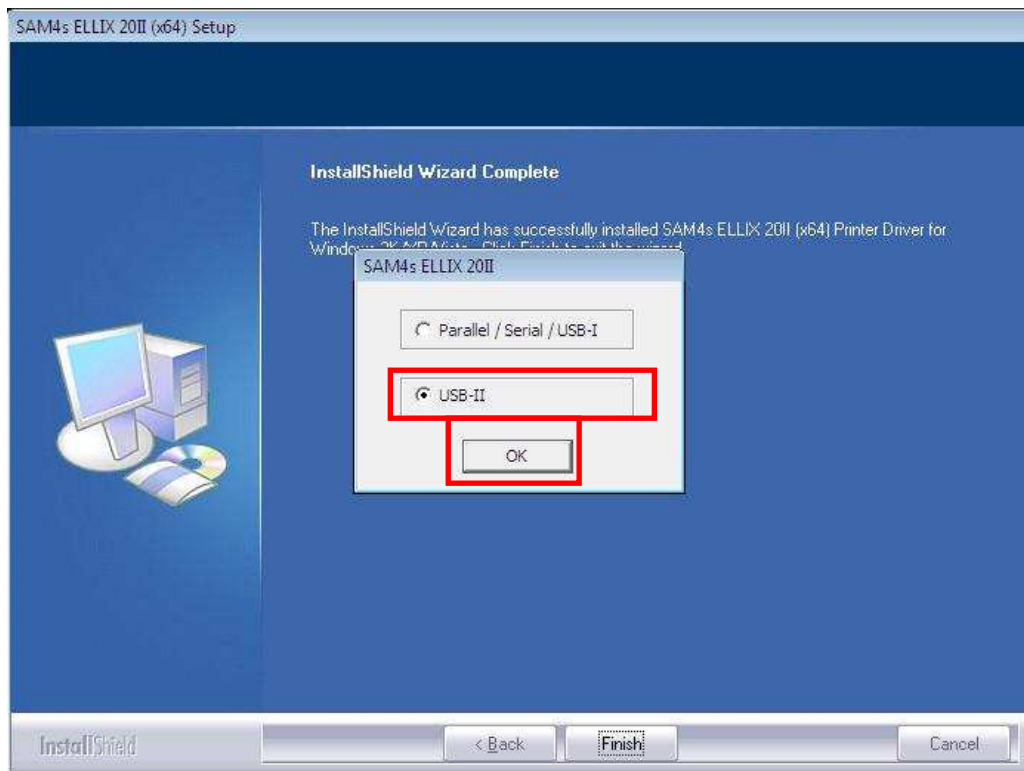
4.4.2 Windows Vista



Execute the auto install/uninstall program. (Select the correct file on your system.)



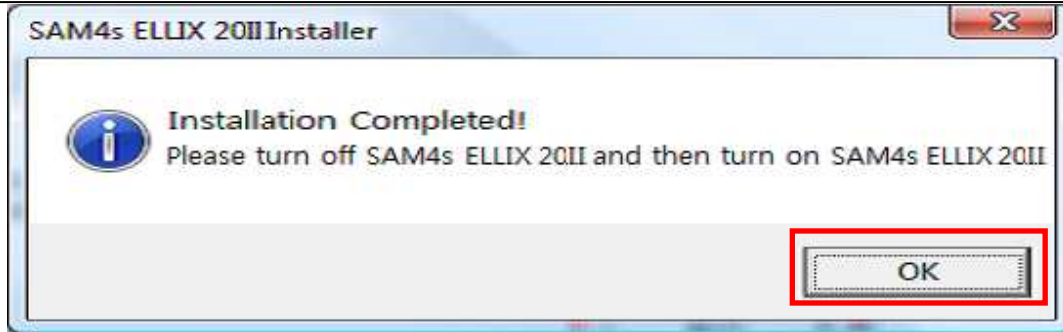
Push the Next.



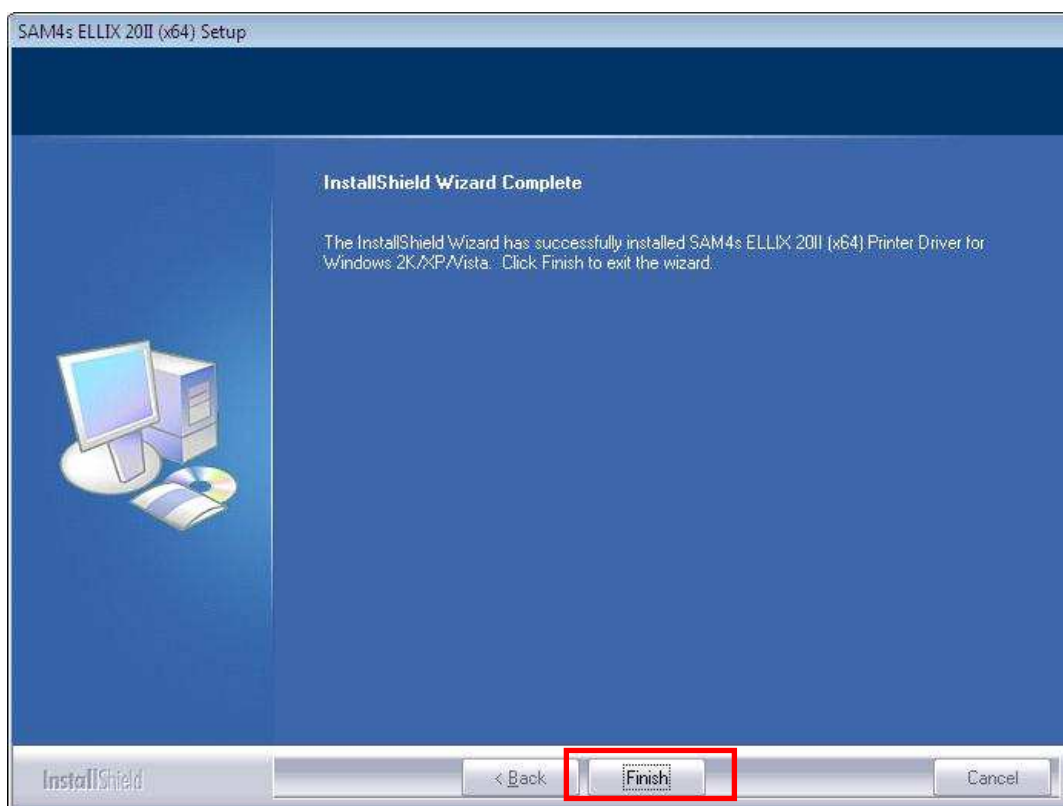
Select 'USB' and press OK.



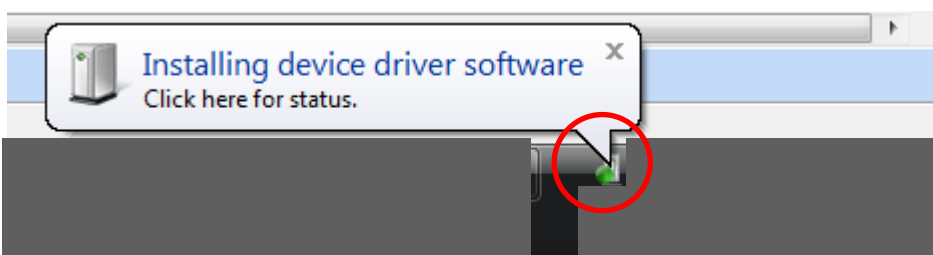
Select 'Install this driver software anyway'. This does not have any influences on OS, you may ignore it.



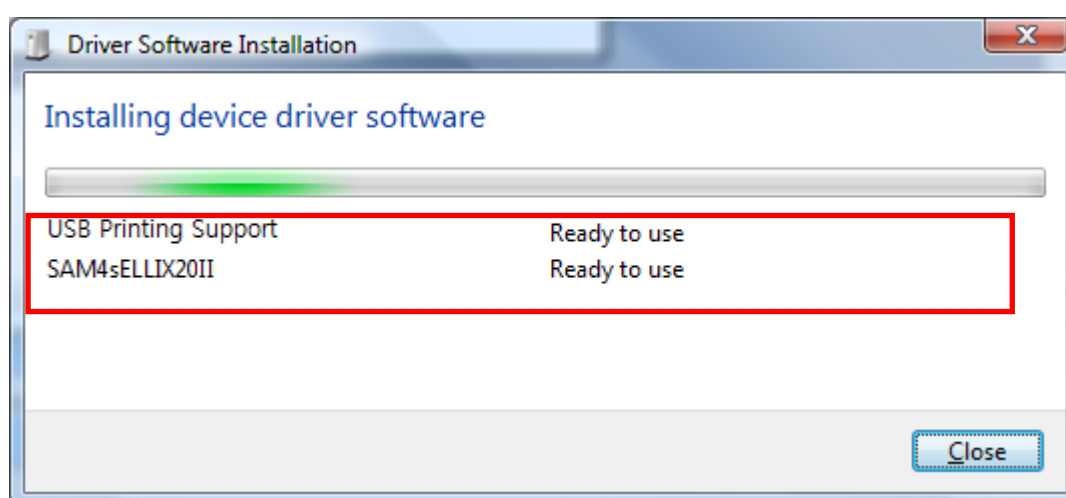
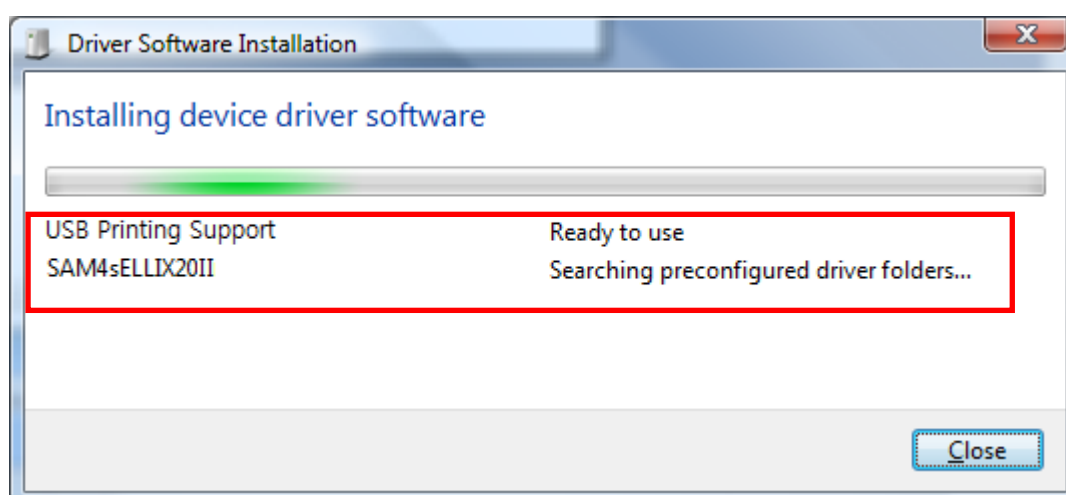
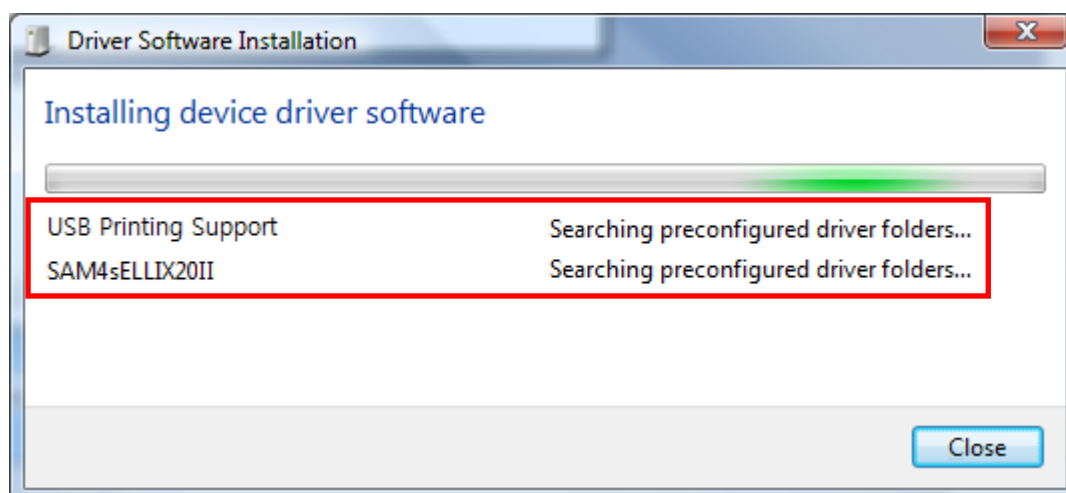
A few seconds later, you'll meet the message like upper shot. You should turn on the printer and then press OK.



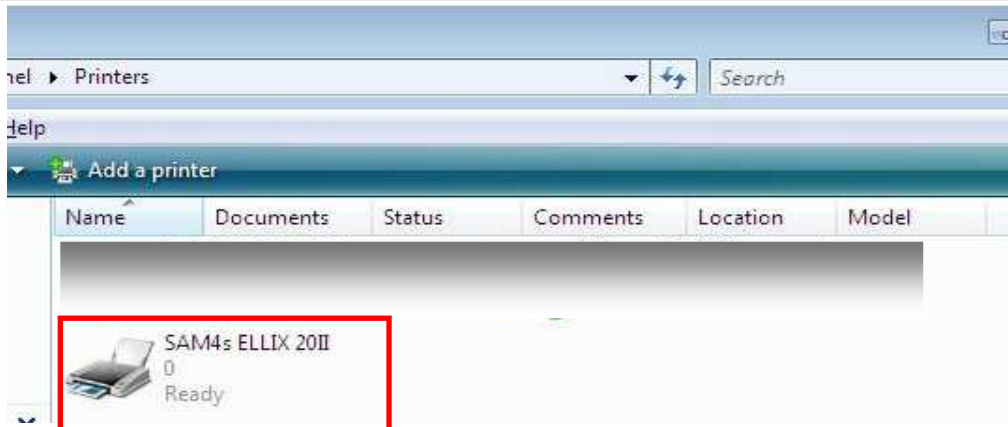
During background progress is going, install program does last steps and waits user's event. So you should press Finish button for completing installation.



Click the balloon message.

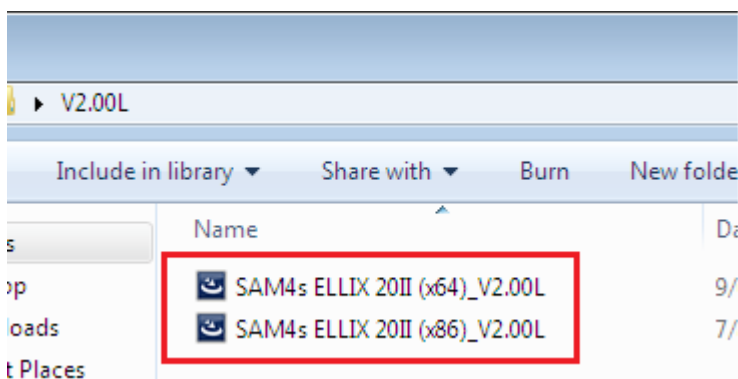


Messages are got in order; SAM4s ELLIX 20II Windows Printer Driver is installed automatically.

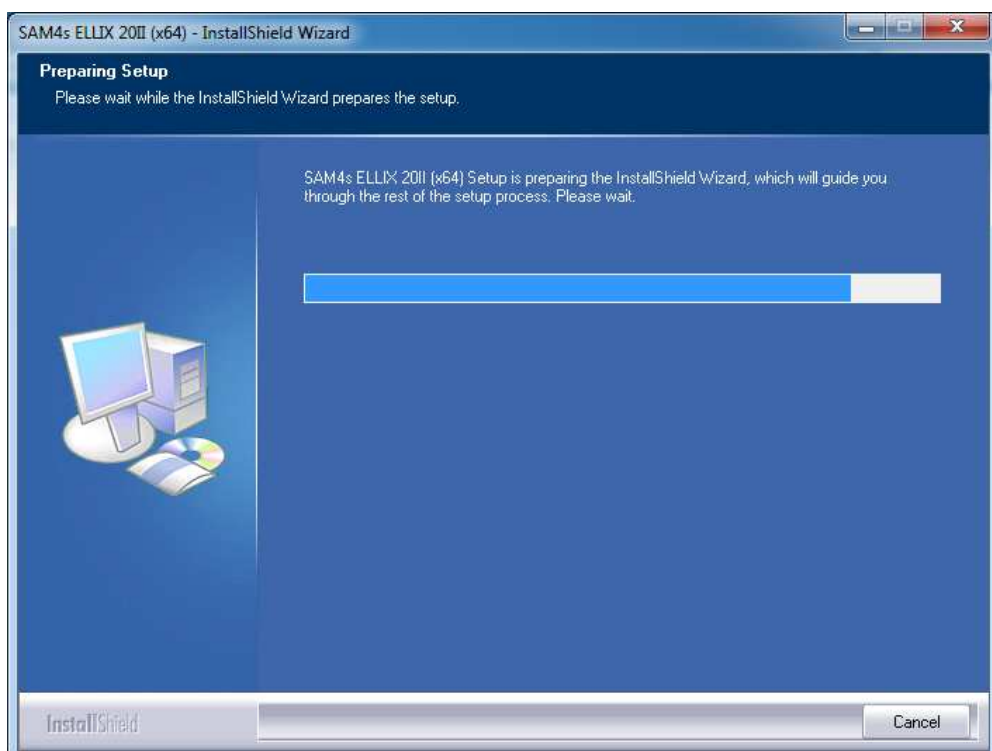


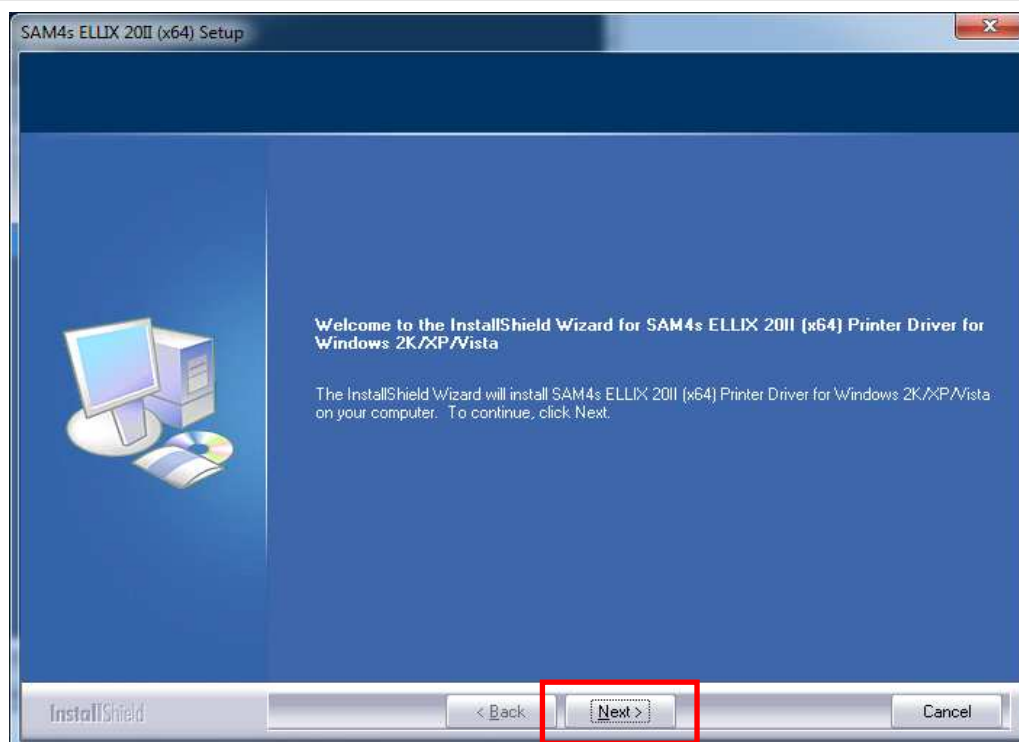
Open Printer folder in Control Panel and check installation successfully.

4.4.3 Windows 7

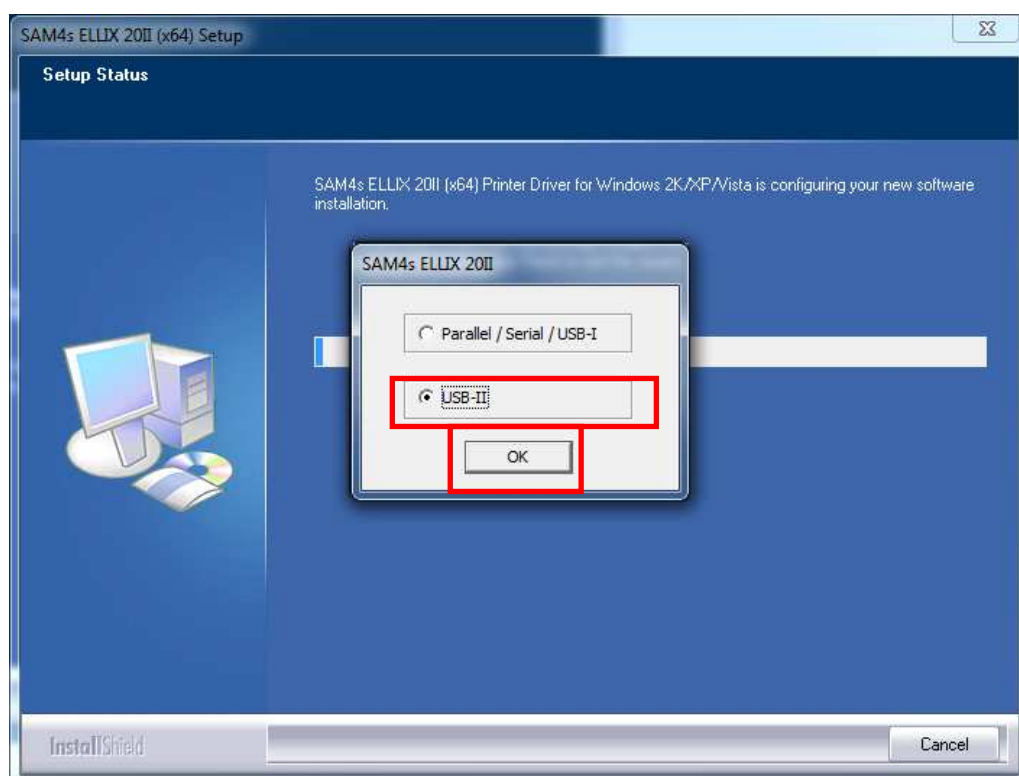


Execute the auto install/uninstall program. (Select the correct file on your system.)

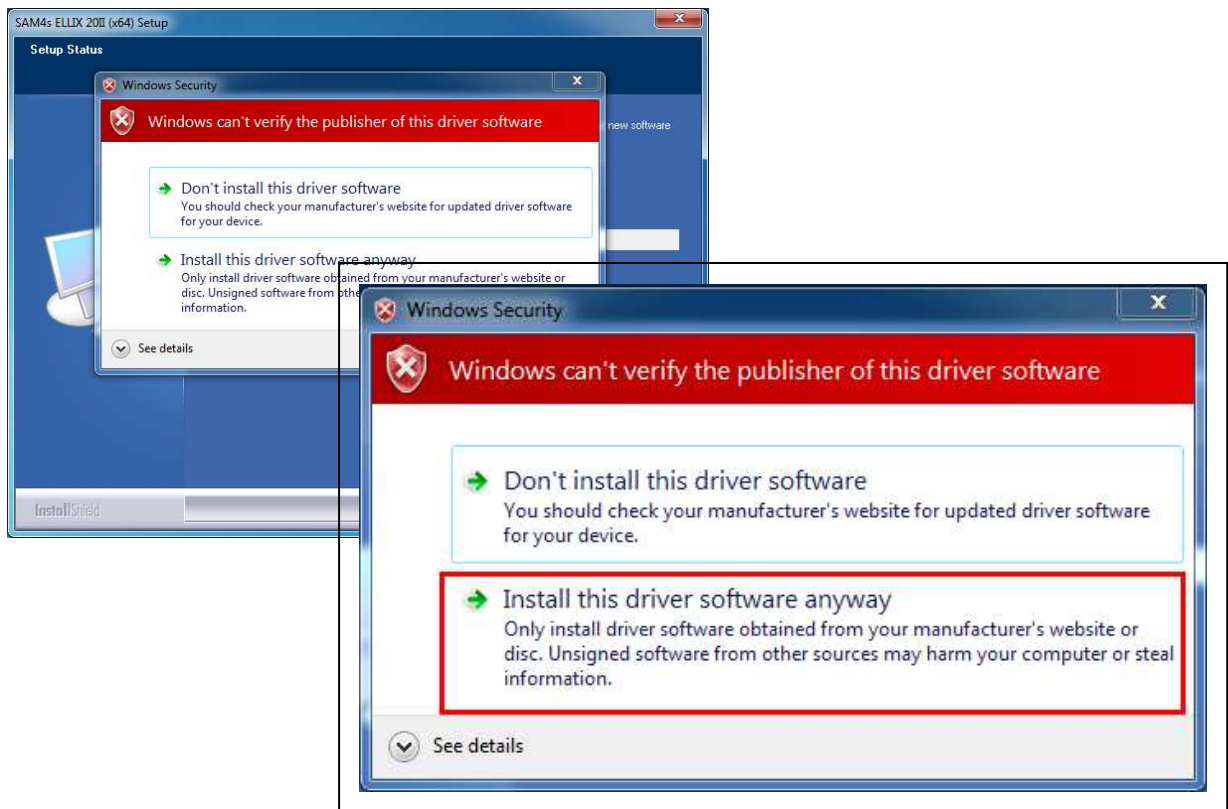




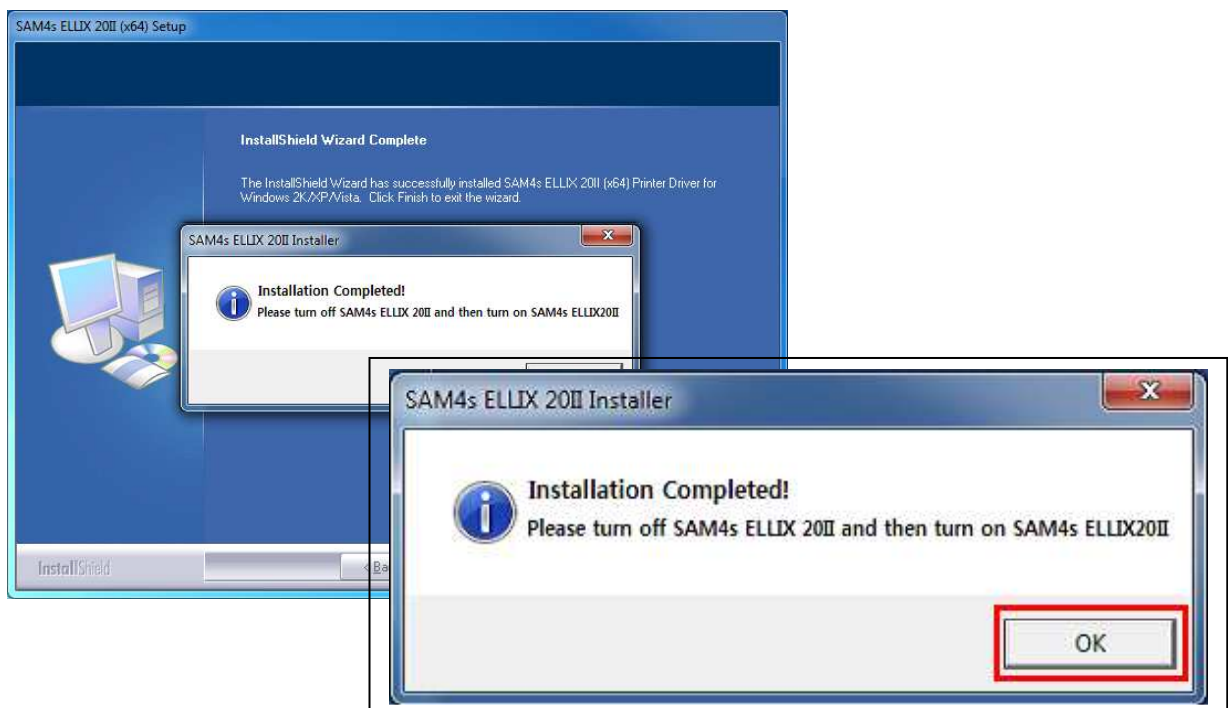
Push the Next.



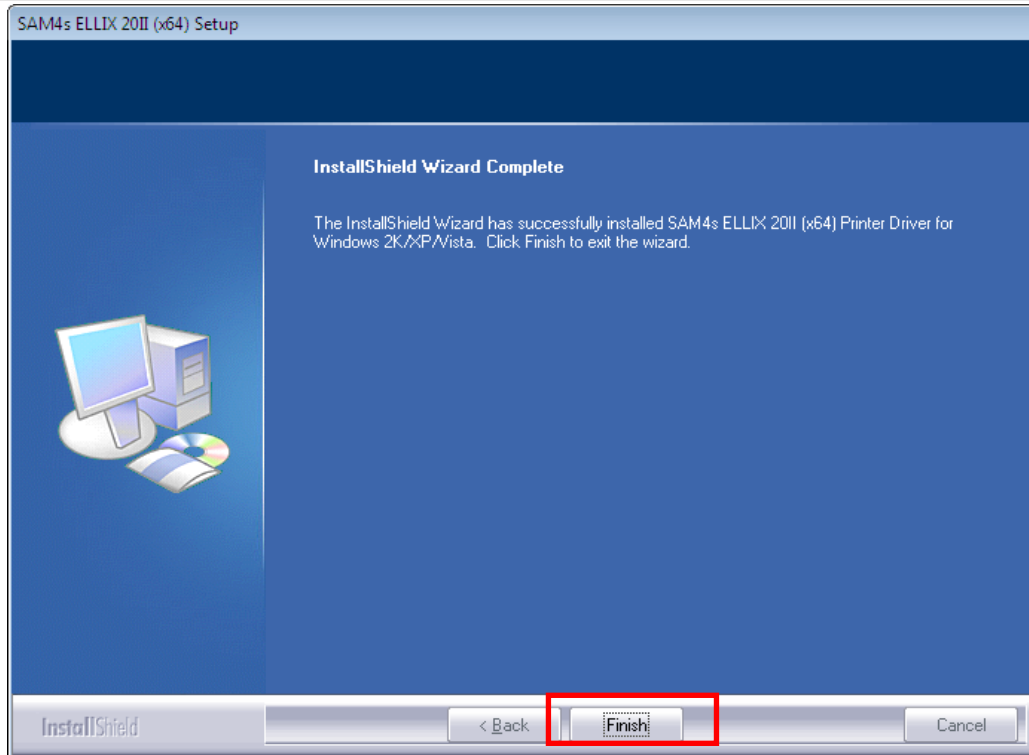
Select 'USB' and press OK.



Select 'Install this driver software anyway'. This does not have any influences on OS, you may ignore it.



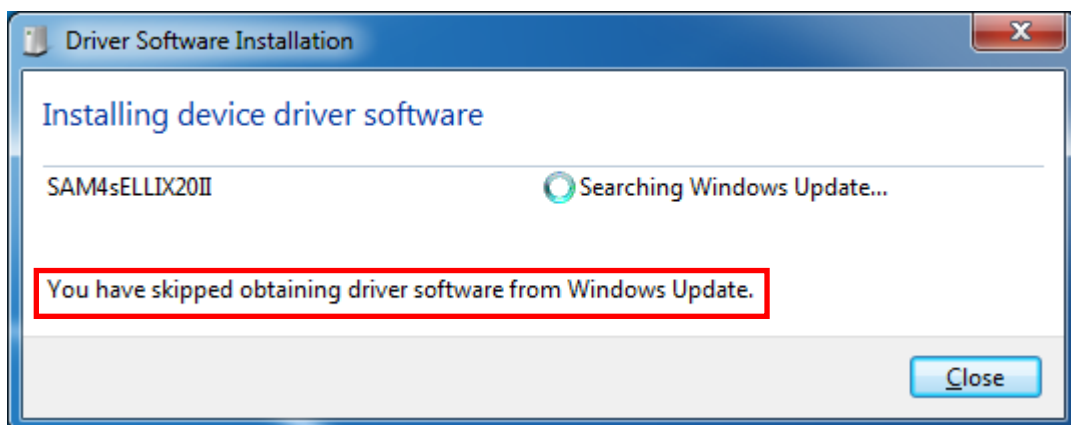
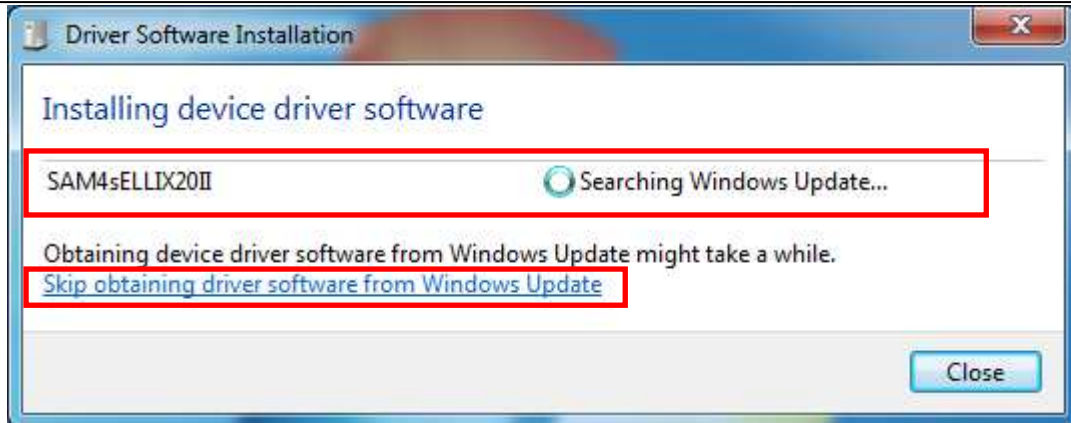
A few seconds later, you'll meet the message like upper shot. You should turn on the printer and then press OK.



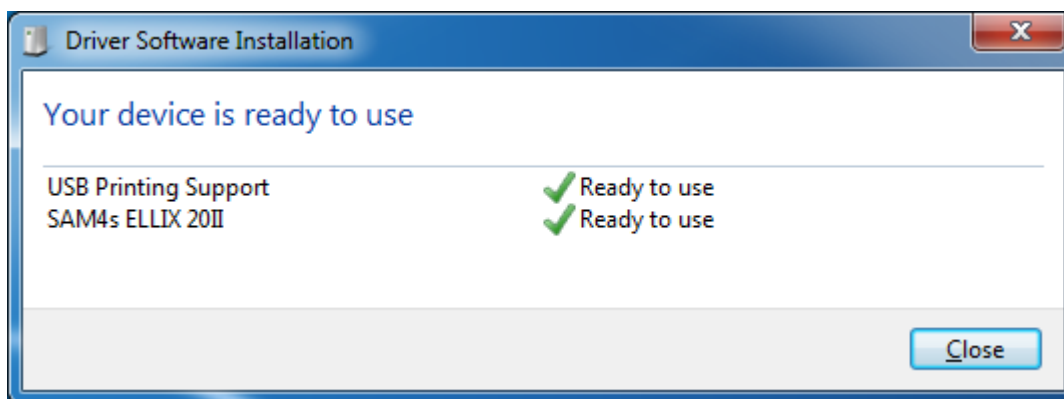
During background progress is going, install program does last steps and waits user's event. So you should press Finish button for completing installation.



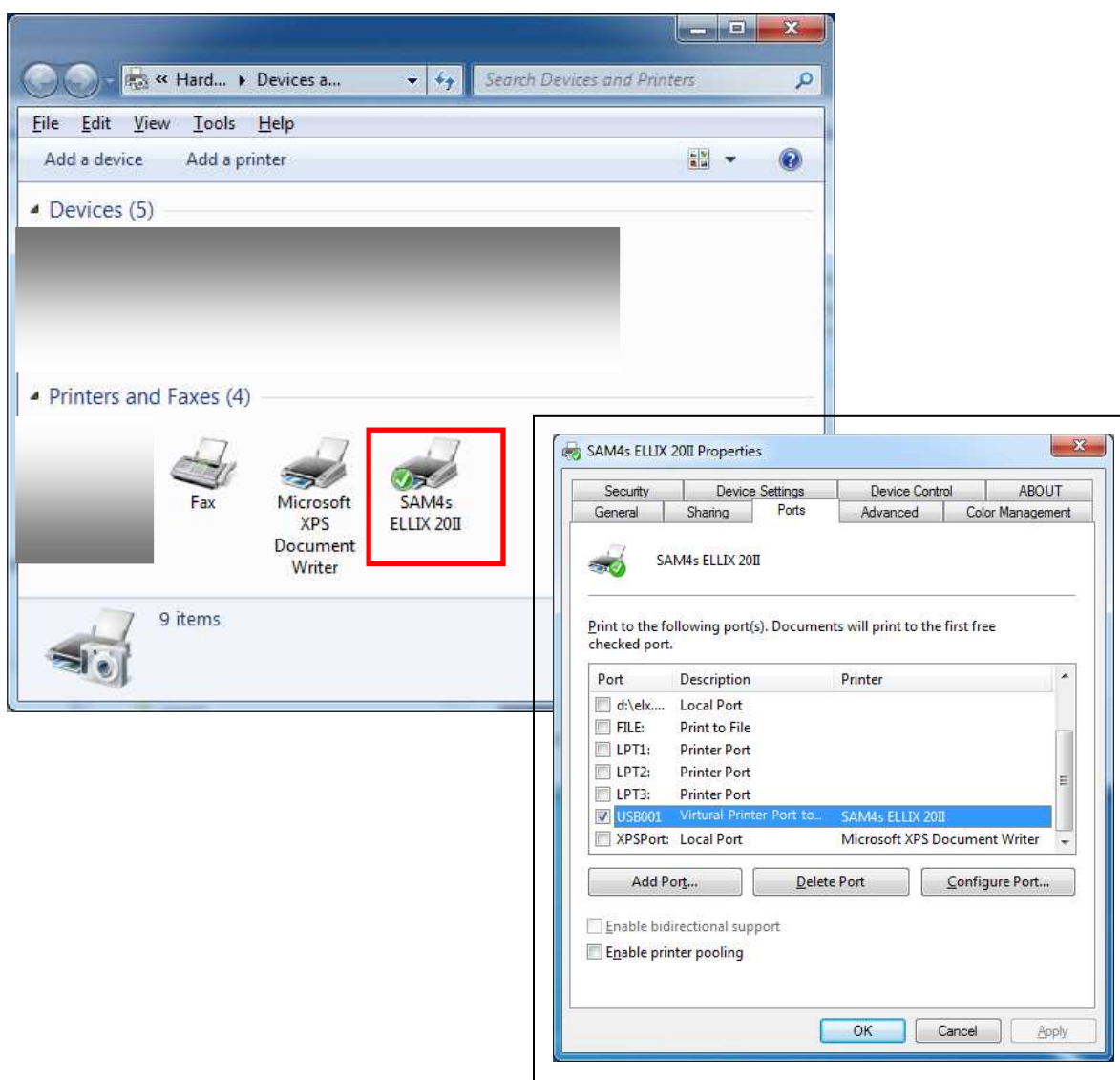
Click the balloon message.



Windows will search for drivers from Windows Update, but we do not need this step. Please select link, 'Skip obtaining driver software from Windows Update' for skipping this step.



SAM4s ELLIX 20II Windows Printer Driver is installed automatically.

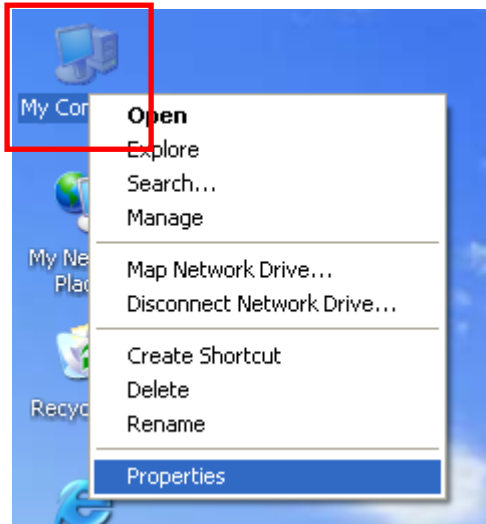


Open Printer folder in Control Panel and check installation successfully and then check its port.

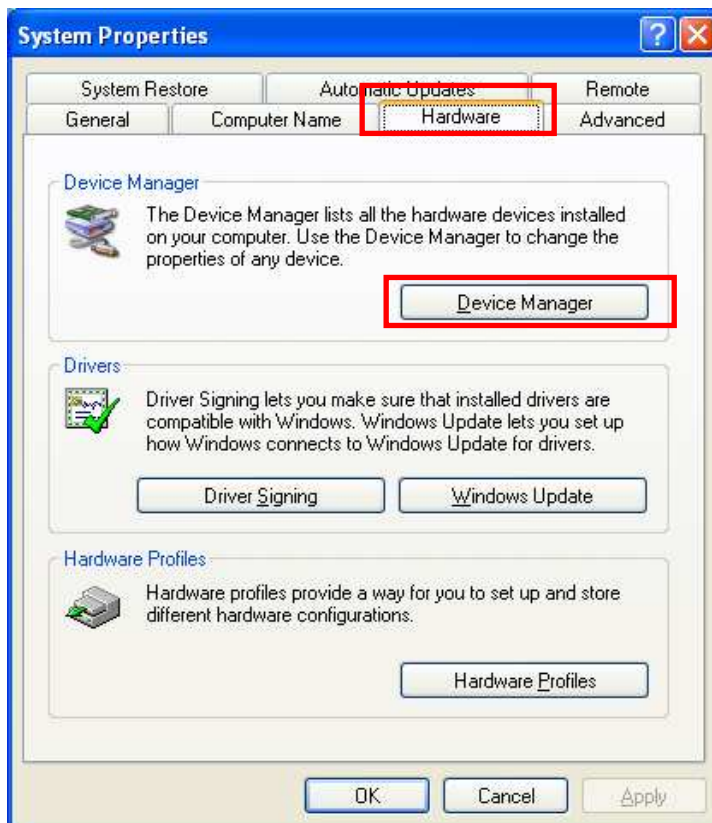
4.4.4 When 'Plug and Play' Message does not popup.

There is sometimes the case which Plug and Play message, recognizing SAM4s ELLIX 20II as USB printer, does not popup. If it is occurred, **restart Windows system**. Even though you restart Windows, if you cannot see popup message, check points below.

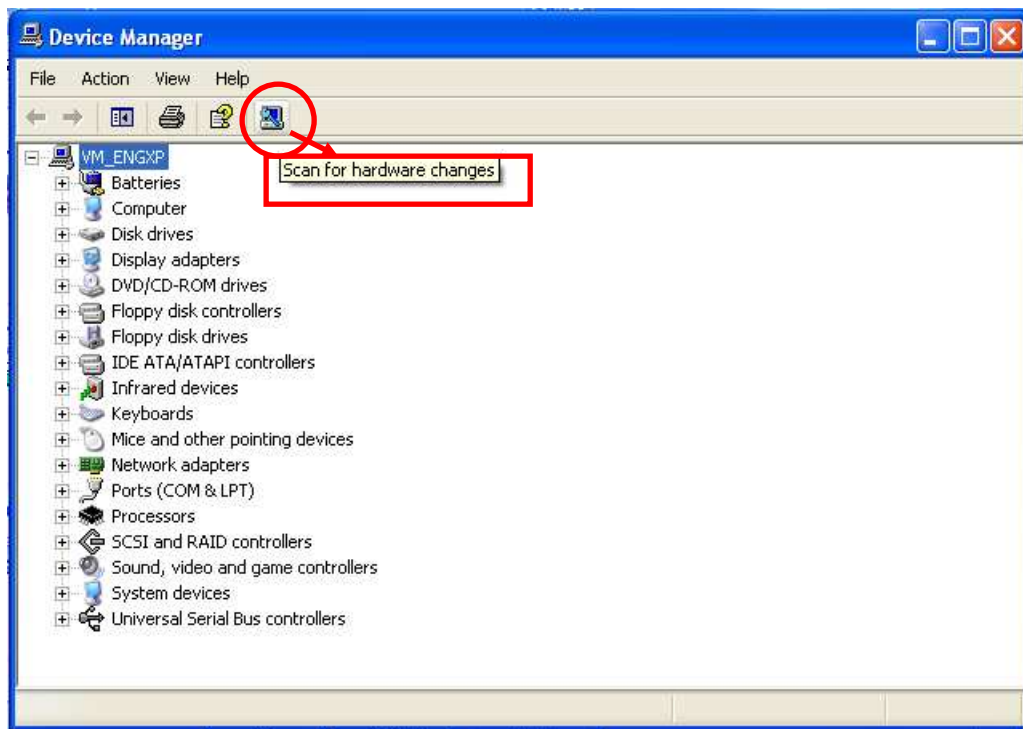
- 1) A case of being that USB Windows Driver is installed for the first time.



Open properties of My Computer.

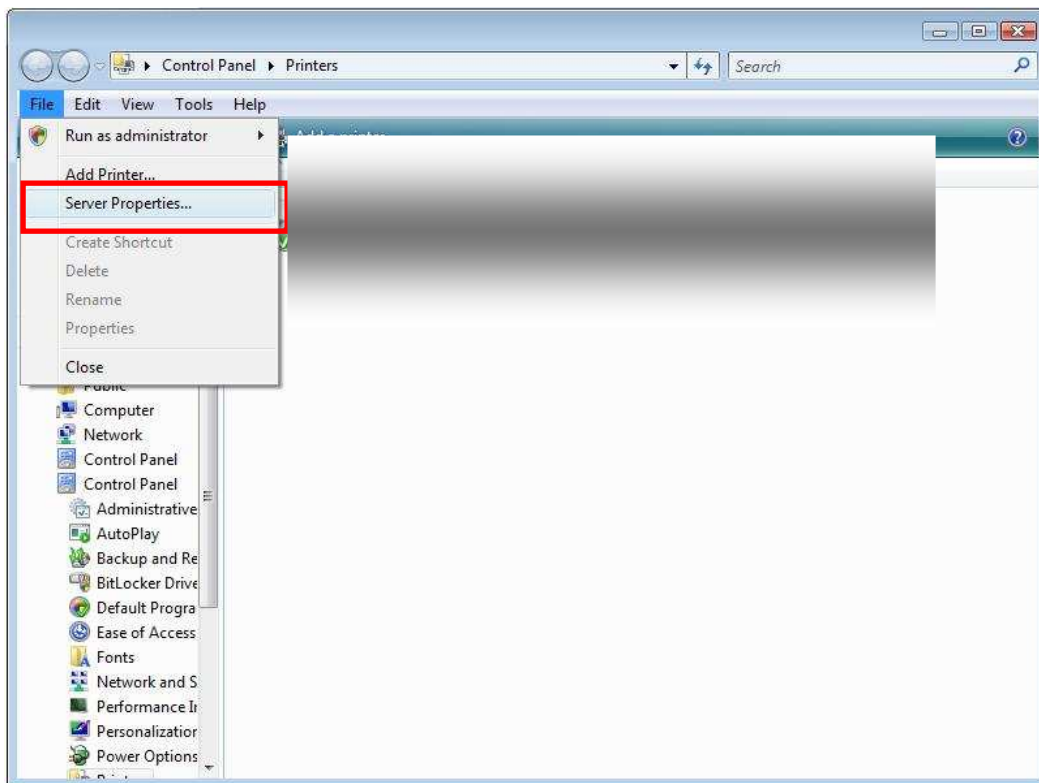


Execute 'Device Manager'.

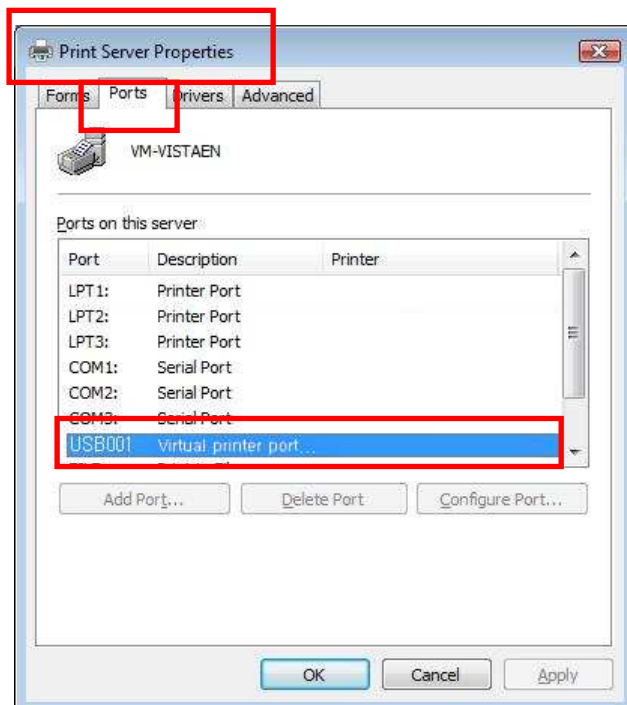


Do "Scan for hardware changes".

- 2) A case of being that USB Windows Driver was installed before.

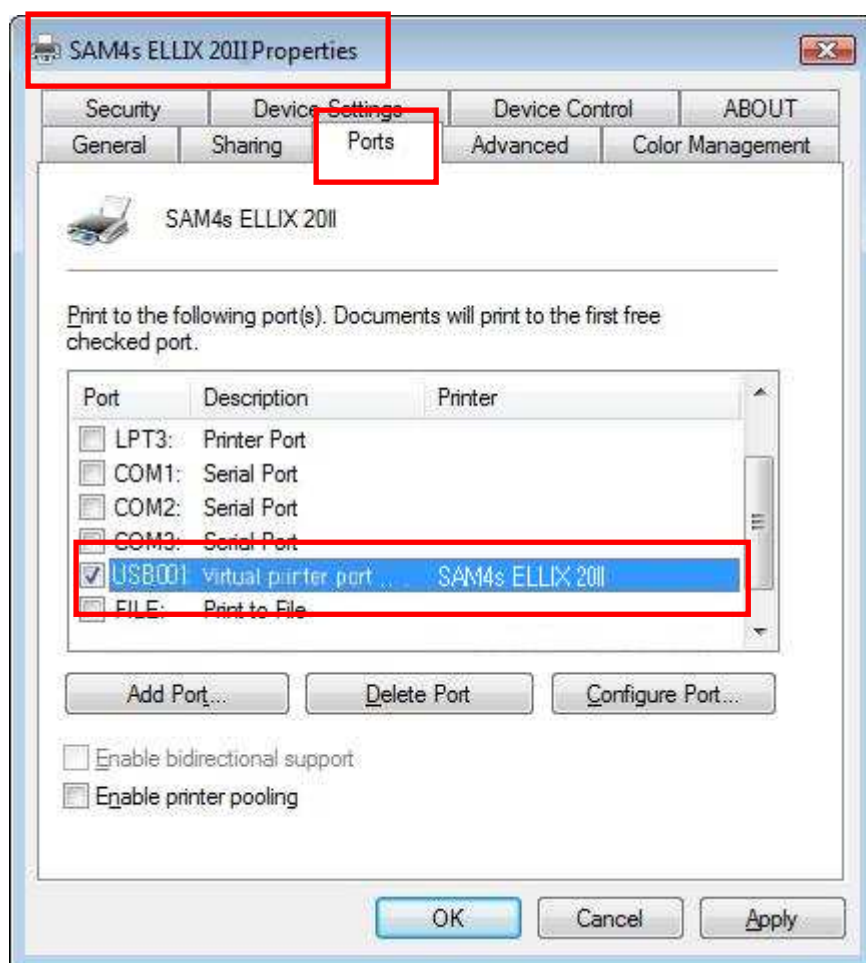


In Printers folder, open 'Server Properties'.



On Ports tab of Print Server Properties, check that USB00n: port already existed.

If USB00n: port already exists, install Windows Driver as the way of explanation at 4.1 Automatic Installation and then change port as USB00n: and use.

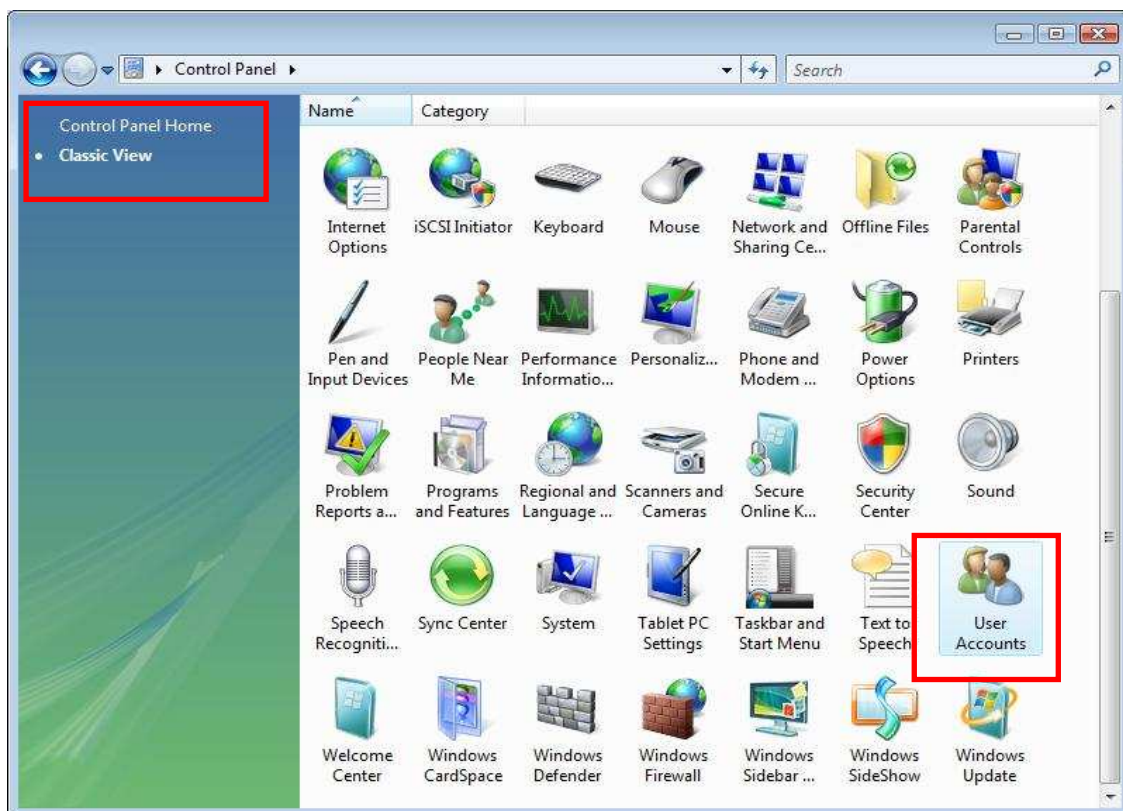


5. Using SAM4s ELLIX 20II in Windows Vista or Upper Version Windows

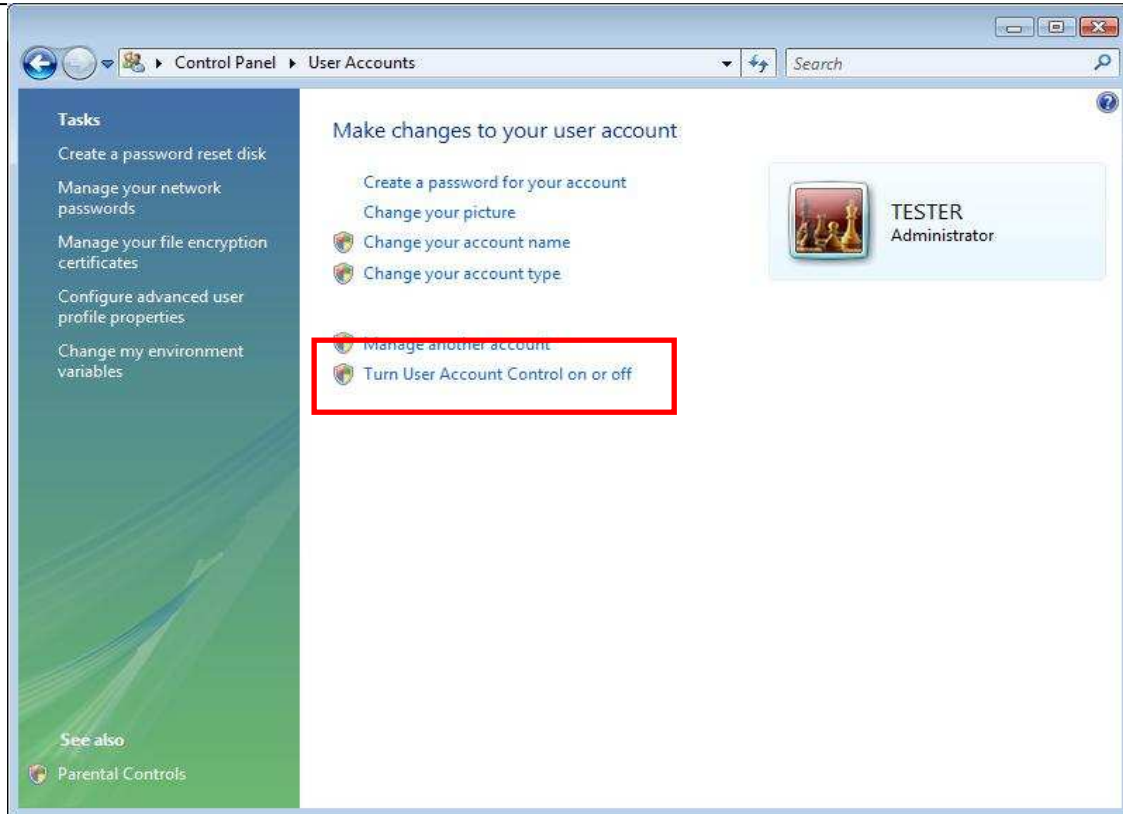
5.1 UAC (User Access Control)

UAC (User Access Control) is a new of Windows Vista and upper versions'. Windows Vista can control user's accessing windows functions, which have an influence, through it. When SAM4s ELLIX 20II is connected with Serial Port (COMn:), Baud rate should be set. In the case of Windows Vista, Baud rate value, we want to, can be set when UAC turns off. And SAM4s ELLIX 20II's 'Device Control' tab's functions also can be controlled when UAC turns off. Below is the way of turning off UAC.

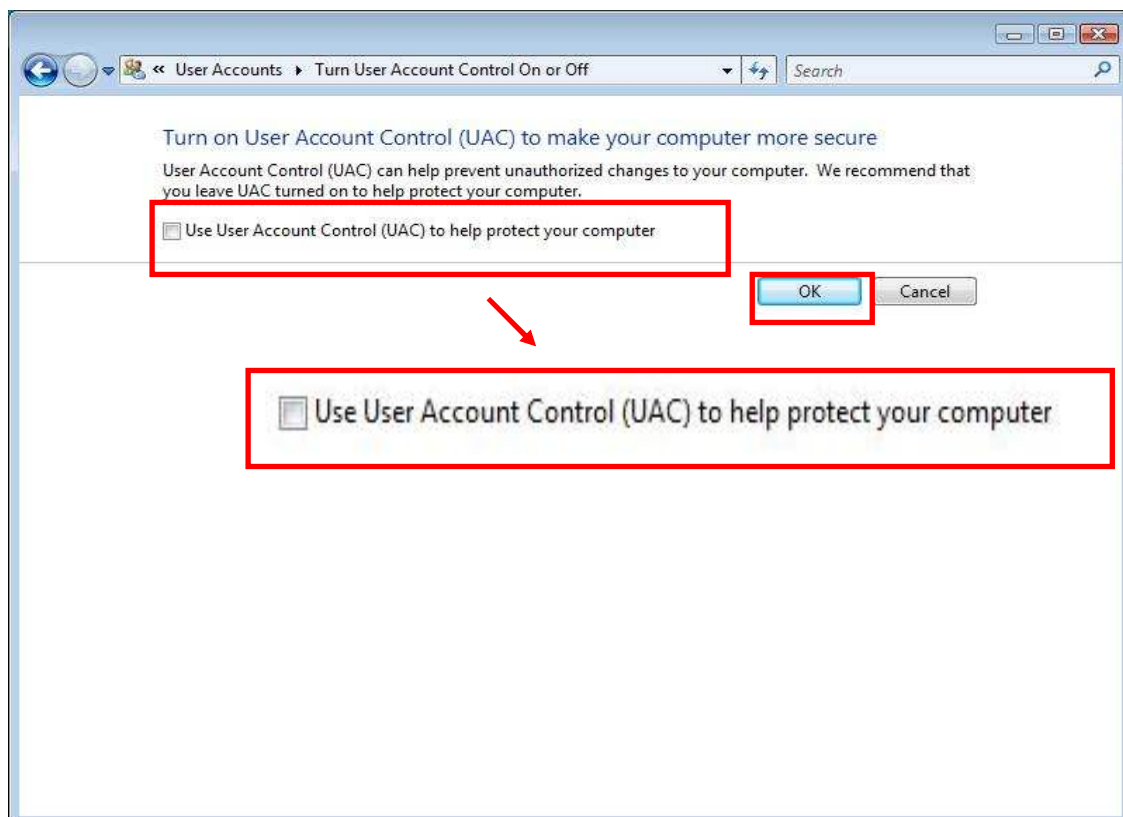
5.2 Turn off UAC and Set Baud rate



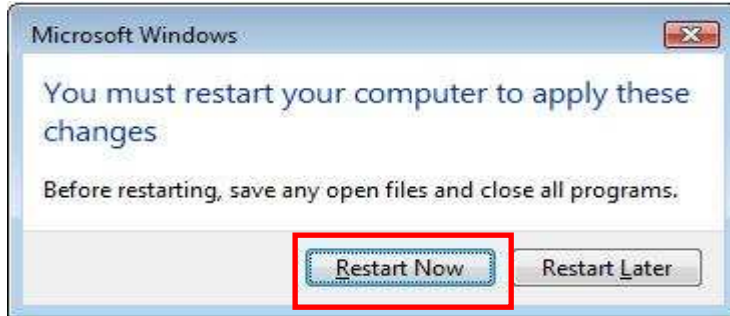
Select 'User Accounts' in Control Panel (As 'Classic View')



Select 'Turn User Account Control on or off'.



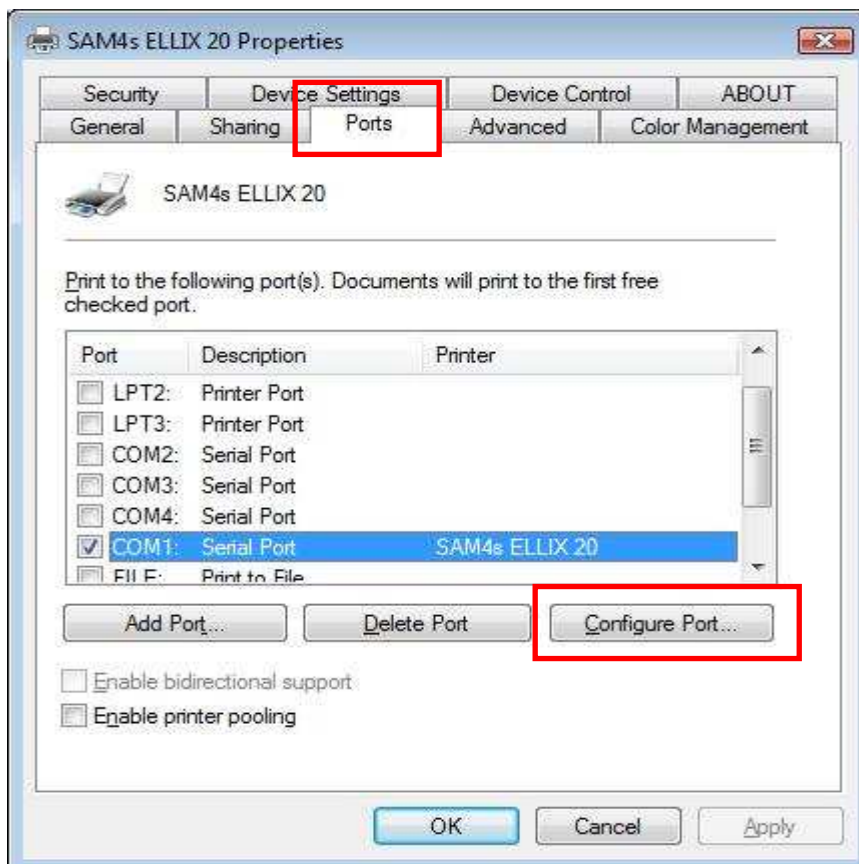
After uncheck the check-button like upper picture, push OK.



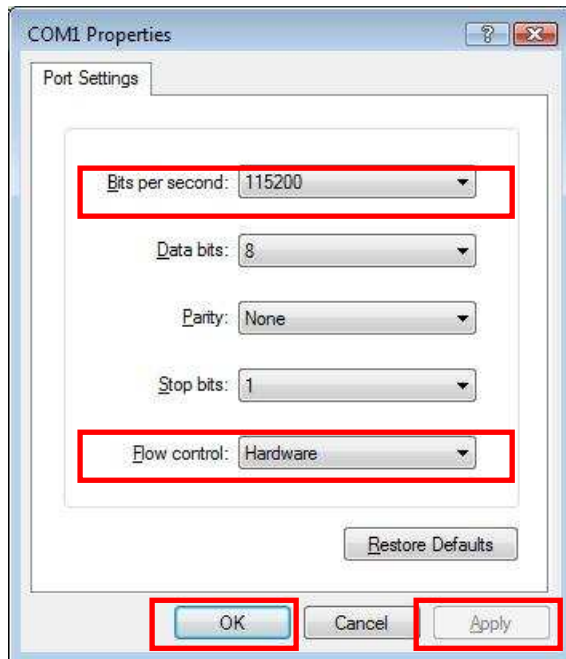
Restart Windows System like as guiding.



When Windows System is restarted, warning message (like a picture) is shown. **Even if you ignore this message, OS is not changed anything.** Now you can set Baud rate value you want to.



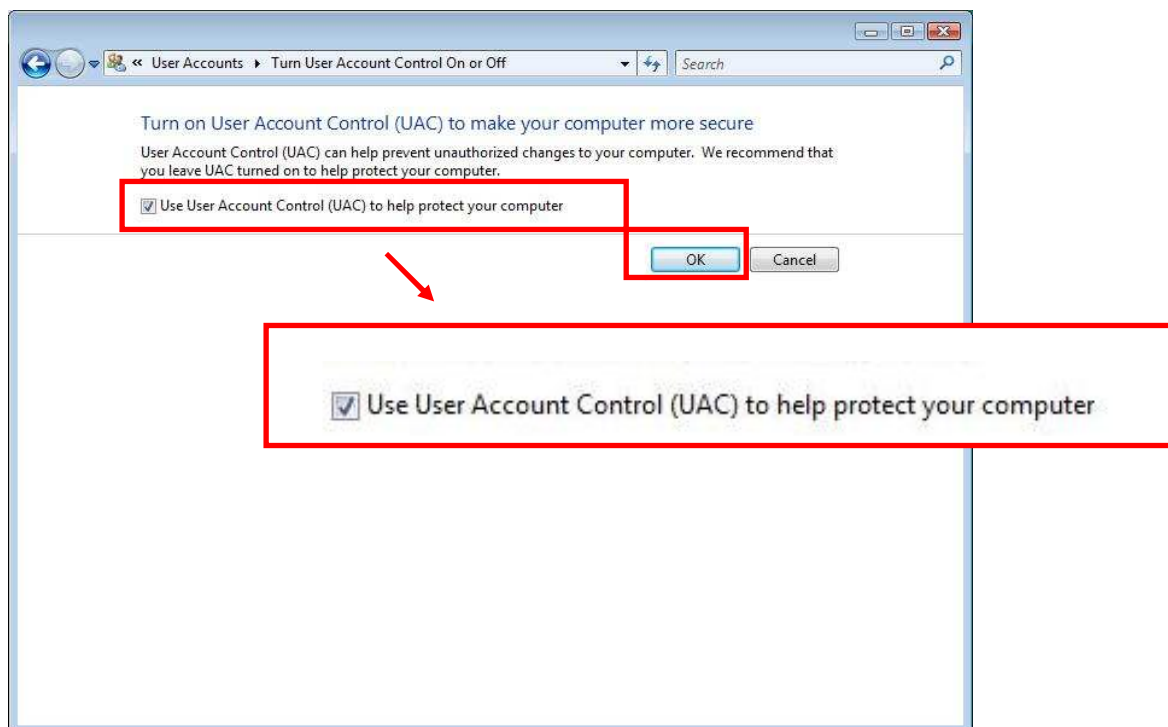
Open properties of installed SAM4s ELLIX 20II Windows Driver and go tab of Port. Select port of SAM4s ELLIX 20II and 'Configure Port...' button.



Set Bits per second as 115200 and Flow Control as hardware, push buttons Apply and OK.

5.3 Turn on UAC

5.3.1 Using Control Panel

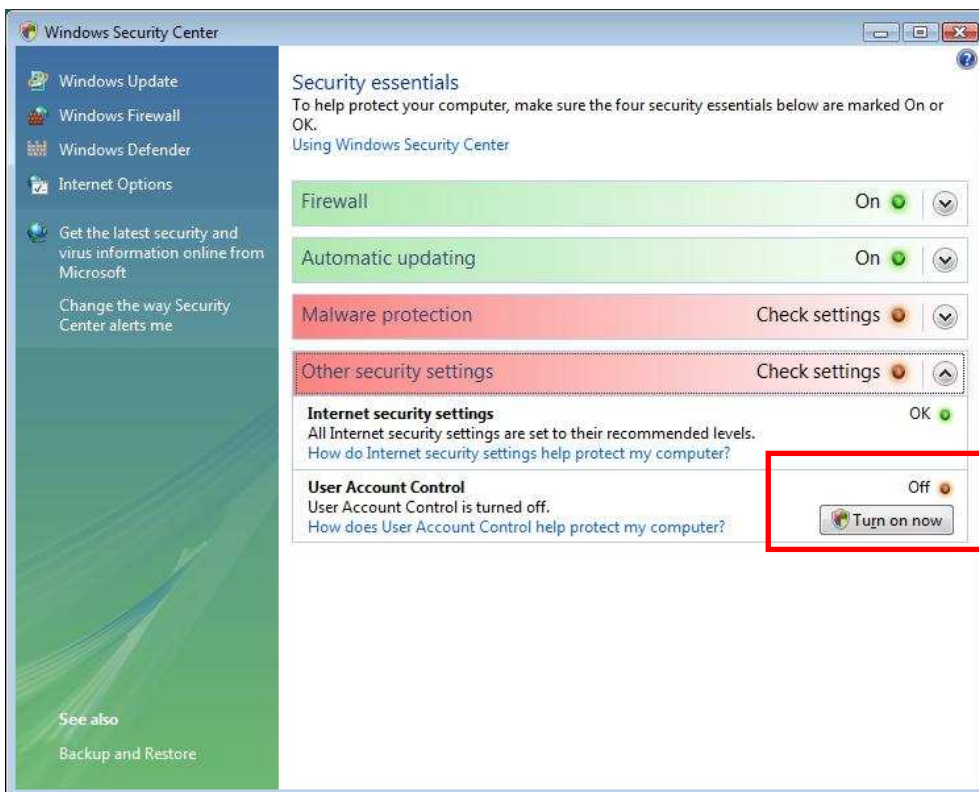


Like explaining at 5.2, check button at 'Use User Account Control(UAC) to help protect your computer' and then restart system.

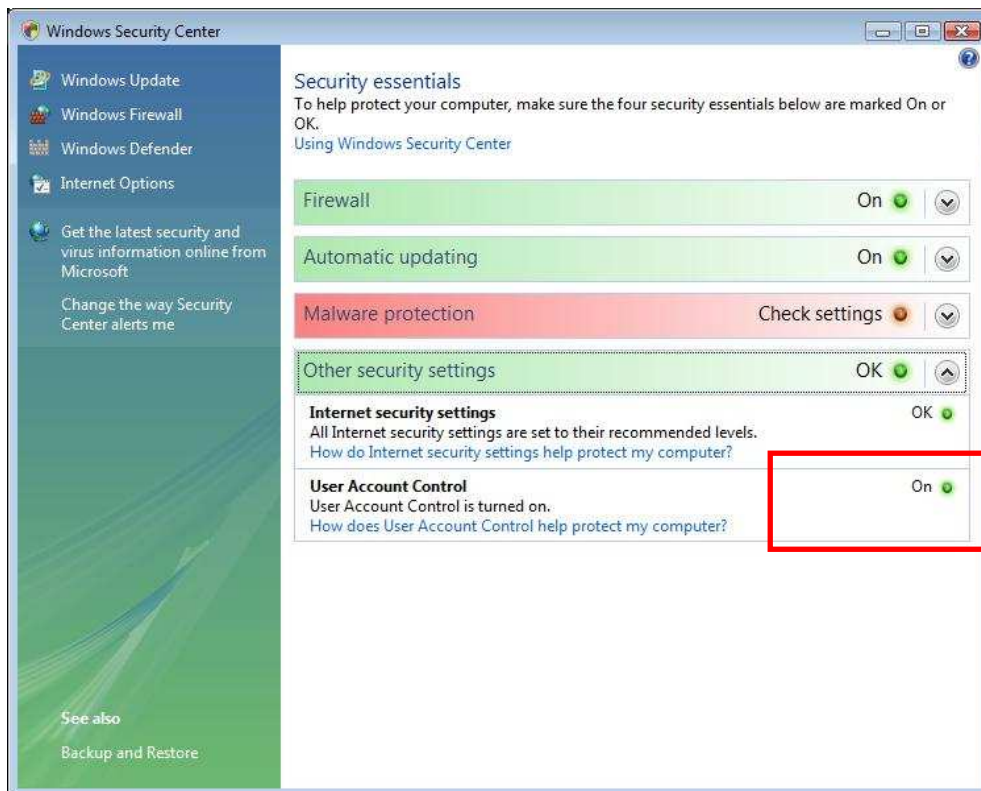
5.3.2 Using balloon message



If UAC turns off, whenever a system is starting, balloon message is shown like upper picture. Click this balloon or red shield icon.



You can look at the setting as 'Off' in Windows Security Center. If you want to turn on UAC, press the button 'Turn on now'.



You can see that 'On' lamp of UAC turned on.