



MOBILE THERMAL PRINTER

MODEL CMP-30 (CPCL)

Windows Driver User's Manual

Rev. 1.00



CITIZEN SYSTEMS JAPAN CO., LTD.

TABLE OF CONTENTS

1. Manual guidance
2. Operating system
3. Windows Printer Driver Preparation
4. Driver Installation and Interface setup.
 - 4.1. Windows Driver Installation
 - 4.2. Serial or Bluetooth Interface setup
 - 4.3. USB Interface setup
5. How to Setup Windows Printer Driver Settings.
 - 5.1. Page Setup.
 - 5.2. Media Setup.
 - 5.3. Barcode Font Setup.
6. Windows Printer Driver Specification.
 - 6.1. Fonts.
 - 6.2. Barcodes.
7. How to delete the Windows Driver.
8. How to use the Windows Driver in the application.

1. Manual guidance.

This manual describes the Windows Driver installation, uninstallation, special functions, and practical use in your application.

2. Operating System.

This software supports following operating systems.

Microsoft Windows 2000

Microsoft Windows XP(32-bit and 64-bit)

Microsoft Windows 2003 Server(32-bit and 64-bit)

Microsoft Windows Vista(32-bit and 64-bit)

Microsoft Windows 2008 Server(32-bit and 64-bit)

Microsoft Windows Embedded for Point Of Service

Microsoft Windows 7(32-bit and 64-bit)

3. Windows Printer Driver Preparation.

The utility CD in the unit box includes the Windows Driver and you can also download it from the website.

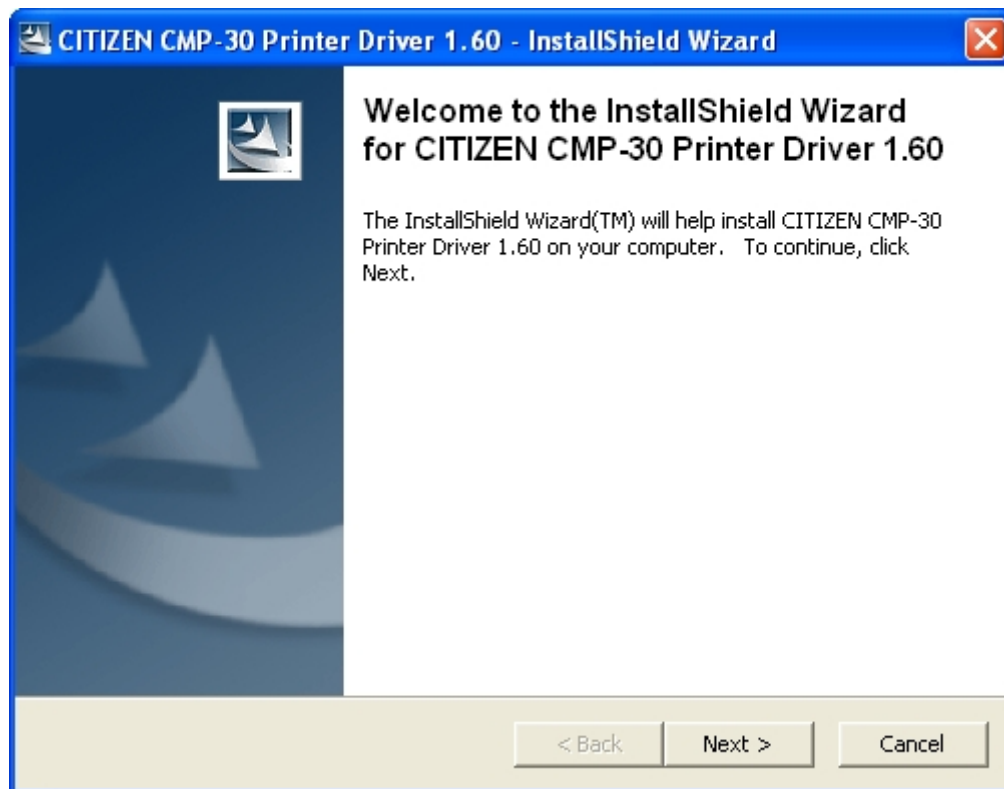
If you have the utility CD, click the CMP-30 installation button and execute CITIZENCMP-30PrinterDriver-xxx.exe file.

Otherwise, download "CITIZENCMP-30PrinterDriver-xxx.zip" file from the website and execute CITIZENCMP-30PrinterDriver-xxx.exe file.

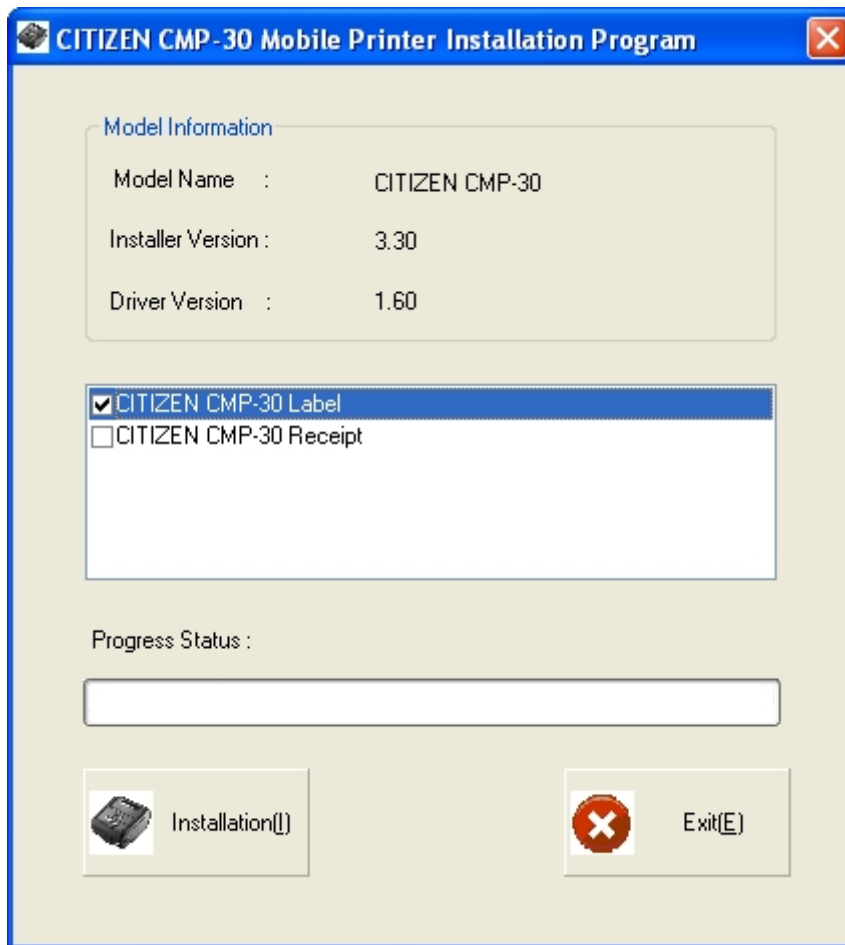
4. Installation and Setup.

4.1. Windows Driver Installation.

- 1) Double-click Windows Driver installation file (CITIZENCMP-30PrinterDriver-xxx.exe).
- 2) Click Next.



3) Select the Printer model in use and click Install.



- 4) Select operating system and the port in use and click OK.
The Driver will be automatically installed.

Select OS Information Dialog


OS Information


| | |
|---------------------------------------|---|
| <input type="radio"/> Windows NT 3.51 | <input type="radio"/> Windows 2000 |
| <input type="radio"/> Windows 95 | <input checked="" type="radio"/> Windows XP |
| <input type="radio"/> Windows 98 | <input type="radio"/> Windows 2003 |
| <input type="radio"/> Windows ME | <input type="radio"/> Windows Vista |
| <input type="radio"/> Windows NT 4.0 | <input type="radio"/> Windows 2008 |
| | <input type="radio"/> Windows 7 |

Processor : 32-Bit OS

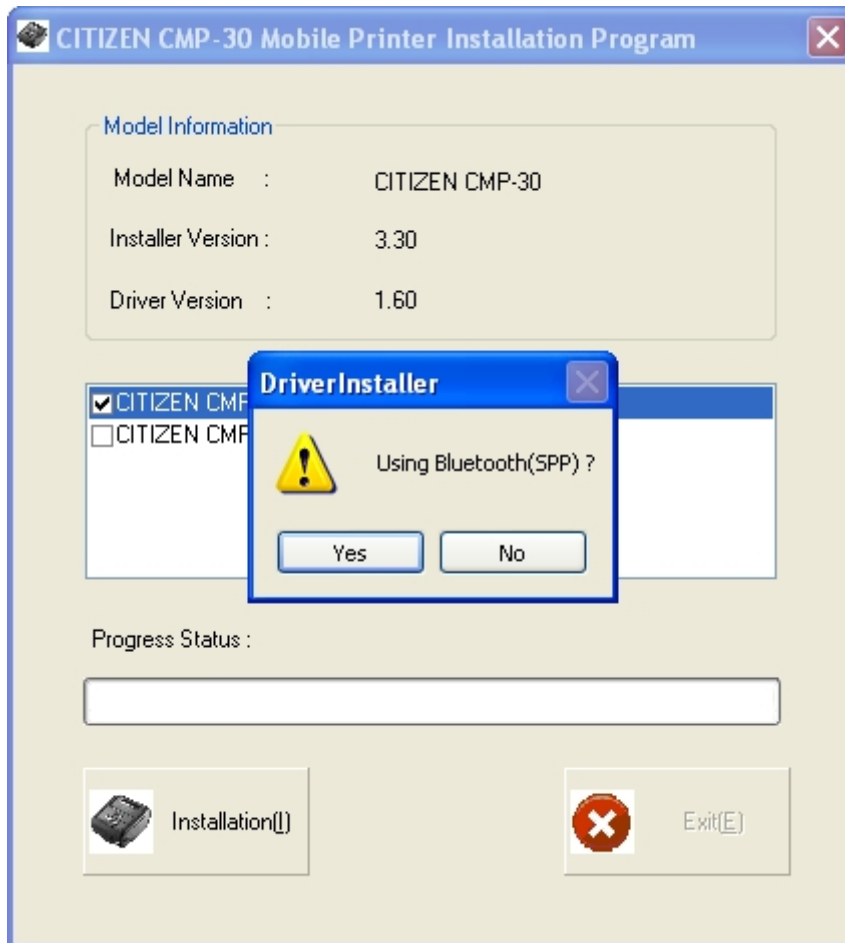
Code Page : US (ANSI) (1252)

Printer Port : COM1

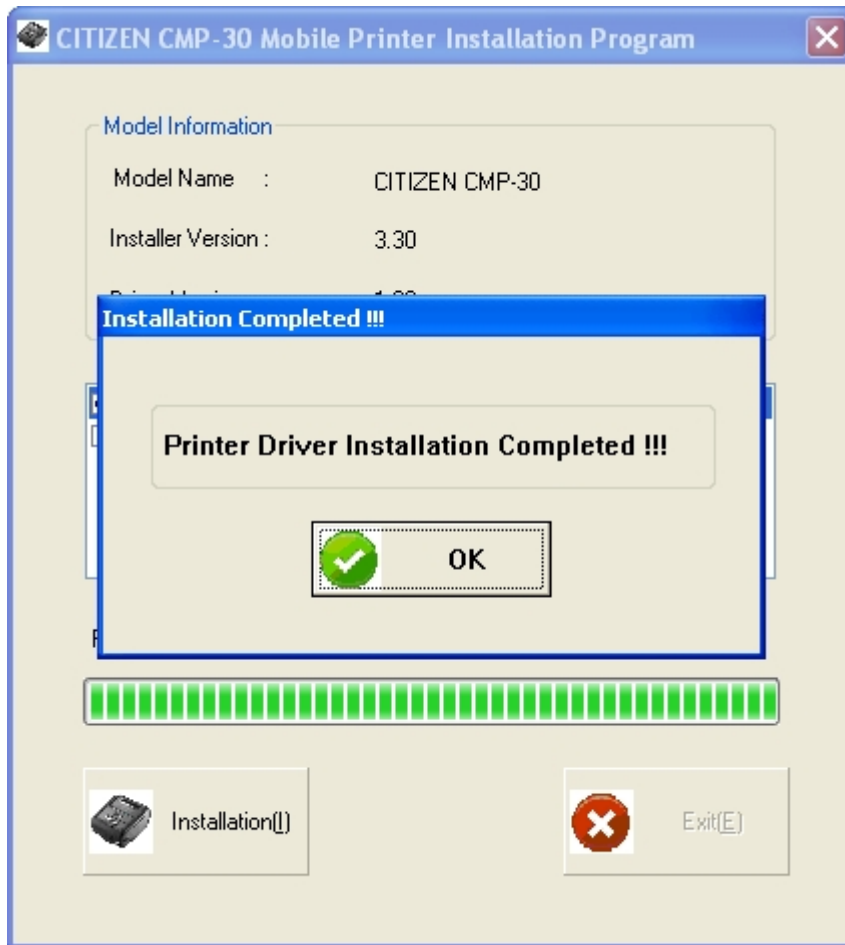
 OK

 Exit

5) Select the Interface to use.

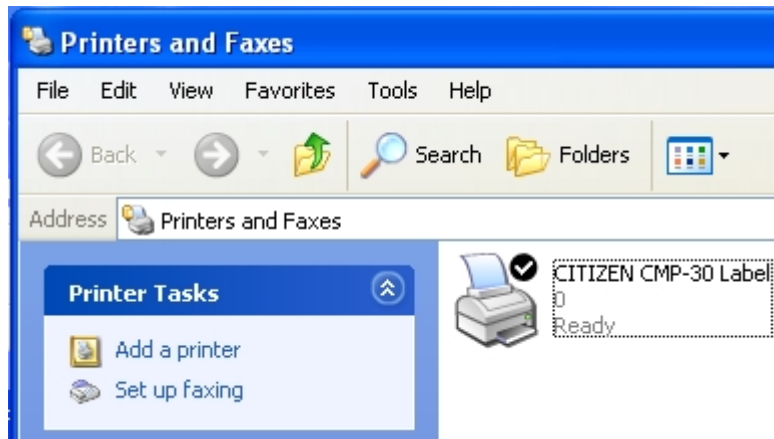


6) Click the “OK” button to finish the installation.

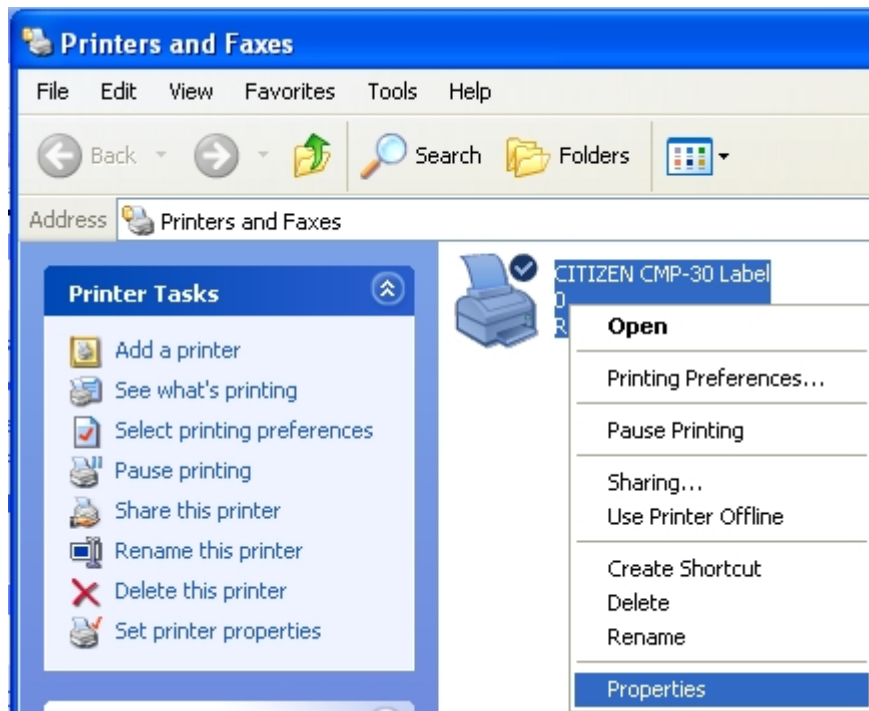


4.2. Serial or Bluetooth Interface setup

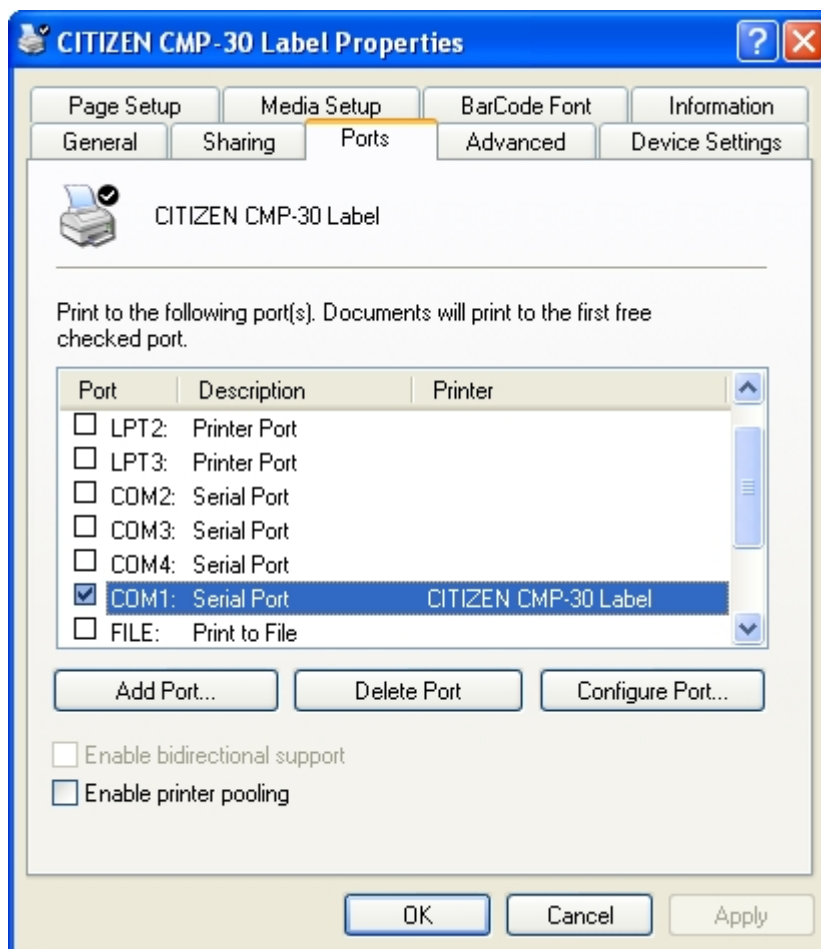
1) Move on to printer directory.



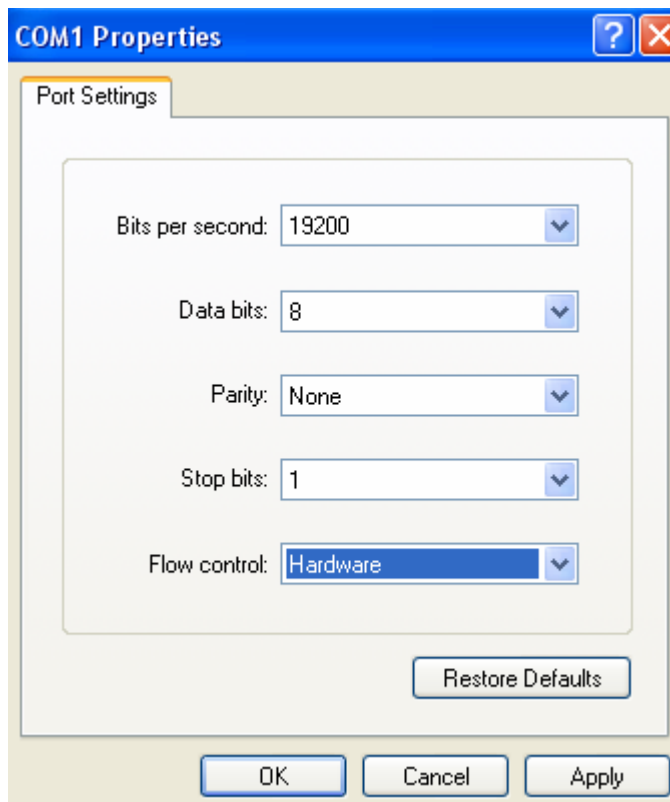
2) Click the right button of the mouse and select Properties.



3) Click Ports tap and Configure Port.



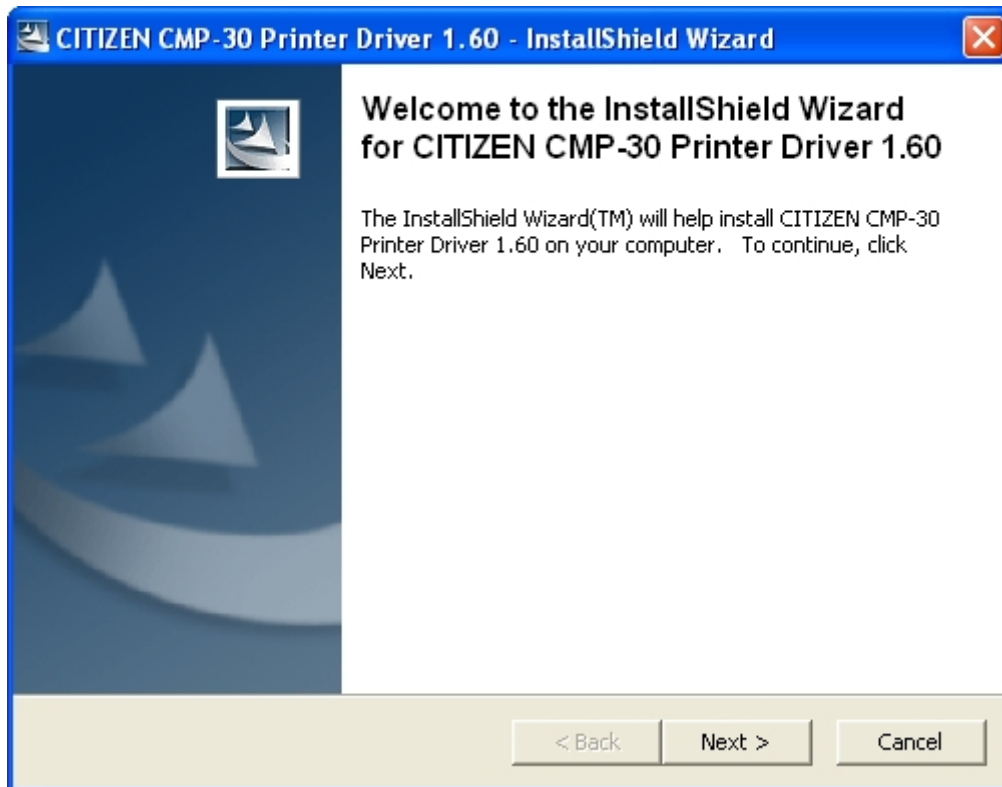
- 4) Set the baudrate, data bit, parity, stop bit and flow control same as the printer. (Check these properties of the printer including the baudrate through the self-test)



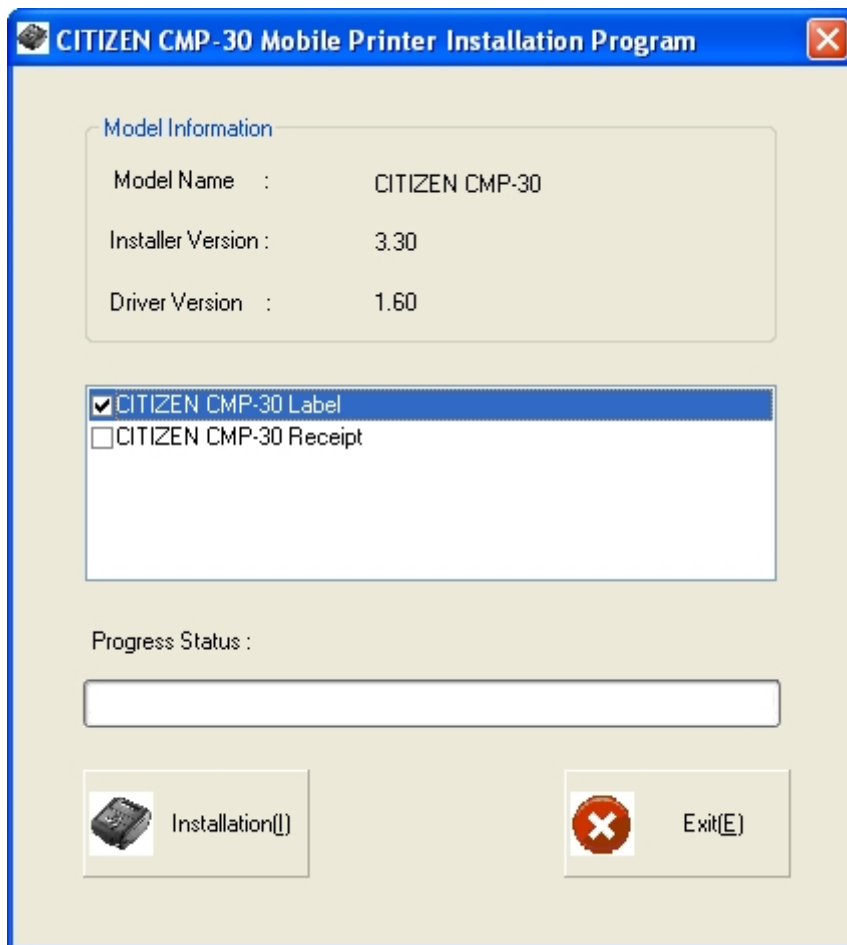
- 5) Click General tap and Print Test Page. If the printout shows the Microsoft Windows logo and Driver information, the Windows Driver is installed properly.

4.3. USB Interface setup

- 1) Double-click Windows Driver installation file (CITIZENCMP-30PrinterDriver-xxx.exe).
- 2) Click Next.



3) Select the Printer model in use and click Install.



- 4) Select operating system and USB port and click OK.
The Driver will be automatically installed.

Select OS Information Dialog


OS Information


| | |
|---------------------------------------|---|
| <input type="radio"/> Windows NT 3.51 | <input type="radio"/> Windows 2000 |
| <input type="radio"/> Windows 95 | <input checked="" type="radio"/> Windows XP |
| <input type="radio"/> Windows 98 | <input type="radio"/> Windows 2003 |
| <input type="radio"/> Windows ME | <input type="radio"/> Windows Vista |
| <input type="radio"/> Windows NT 4.0 | <input type="radio"/> Windows 2008 |
| | <input type="radio"/> Windows 7 |

Processor : 32-Bit OS

Code Page : US (ANSI) (1252)

Printer Port : USB

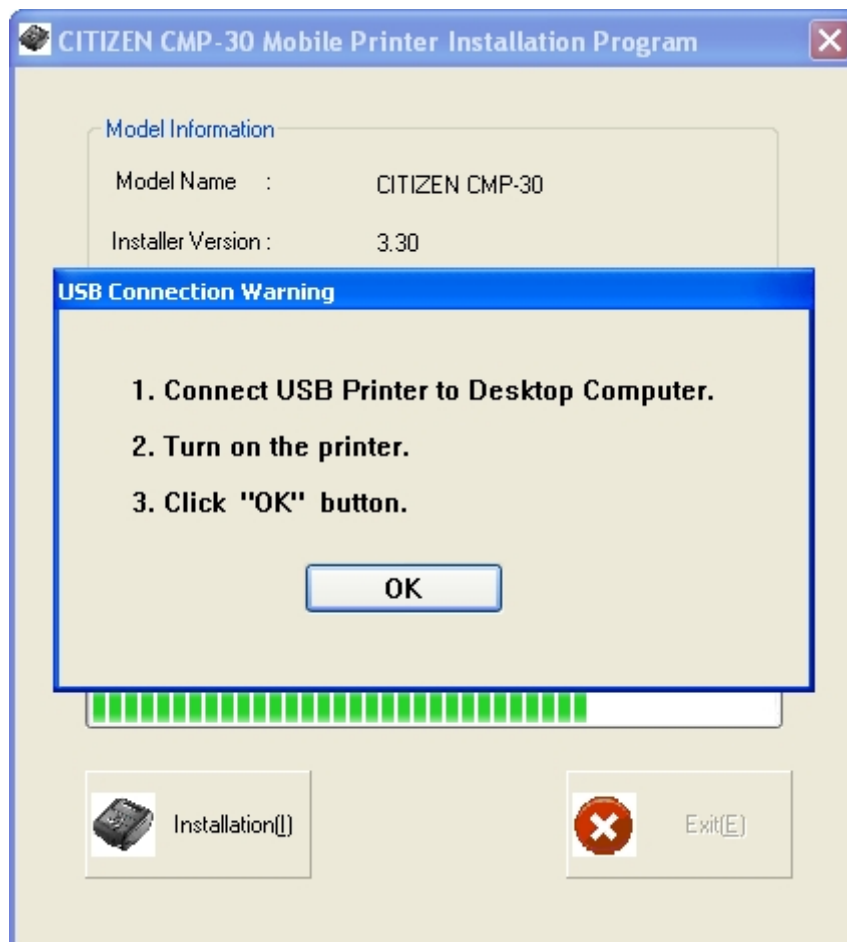
 OK

 Exit

- 5) Click the “Continue Anyway” Button.



- 6) Once printer Power turns ON and Click OK.



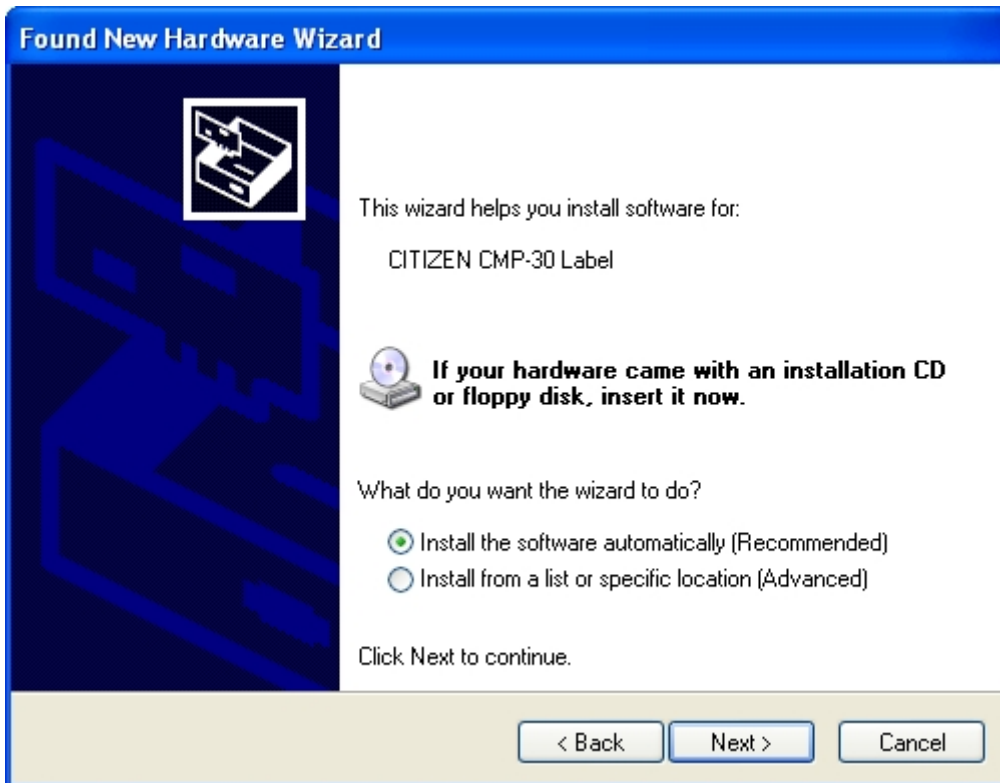
- 7) When turning on the printer, you can see the Pop-up window from Tray Icon.



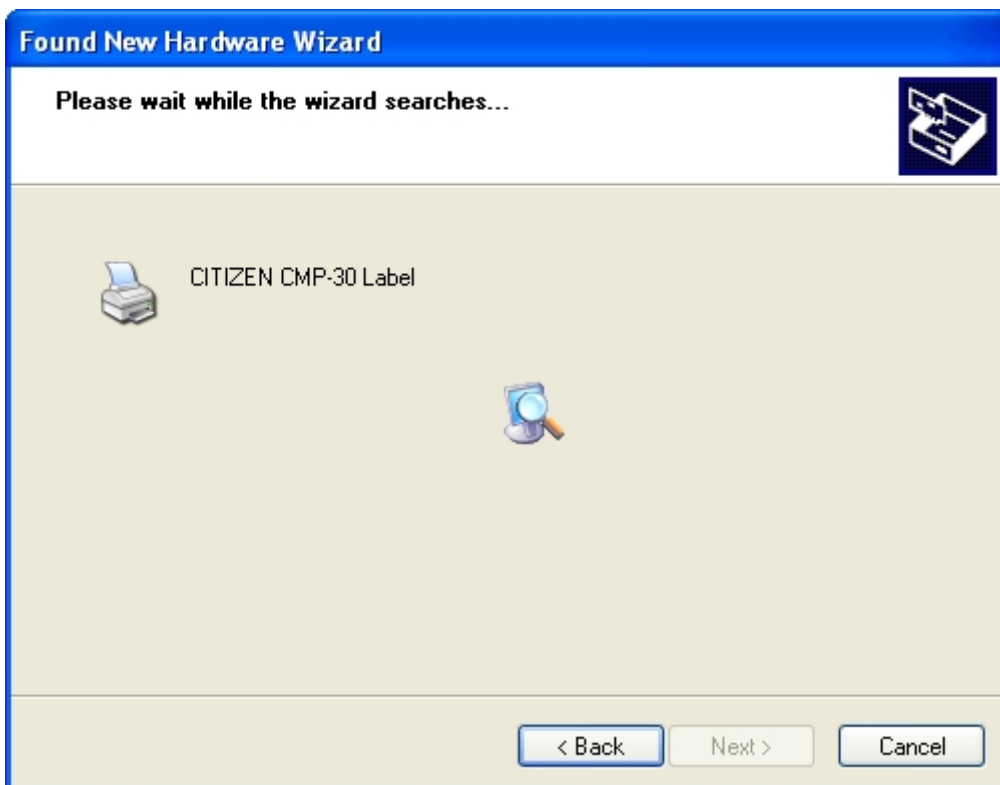
- 8) When the new hardware wizard is appeared for the installation of the windows driver, select the option as shown below and Click the “Next>” button.



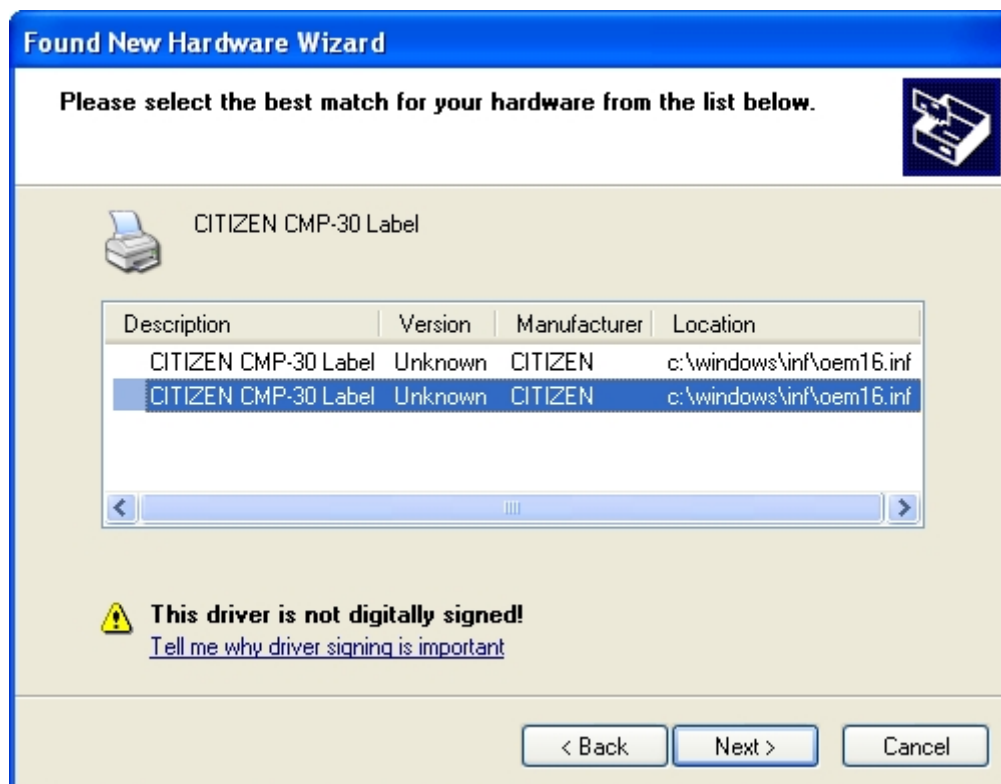
9) Click the "Next>" button.



10) Search process is displayed as shown below.



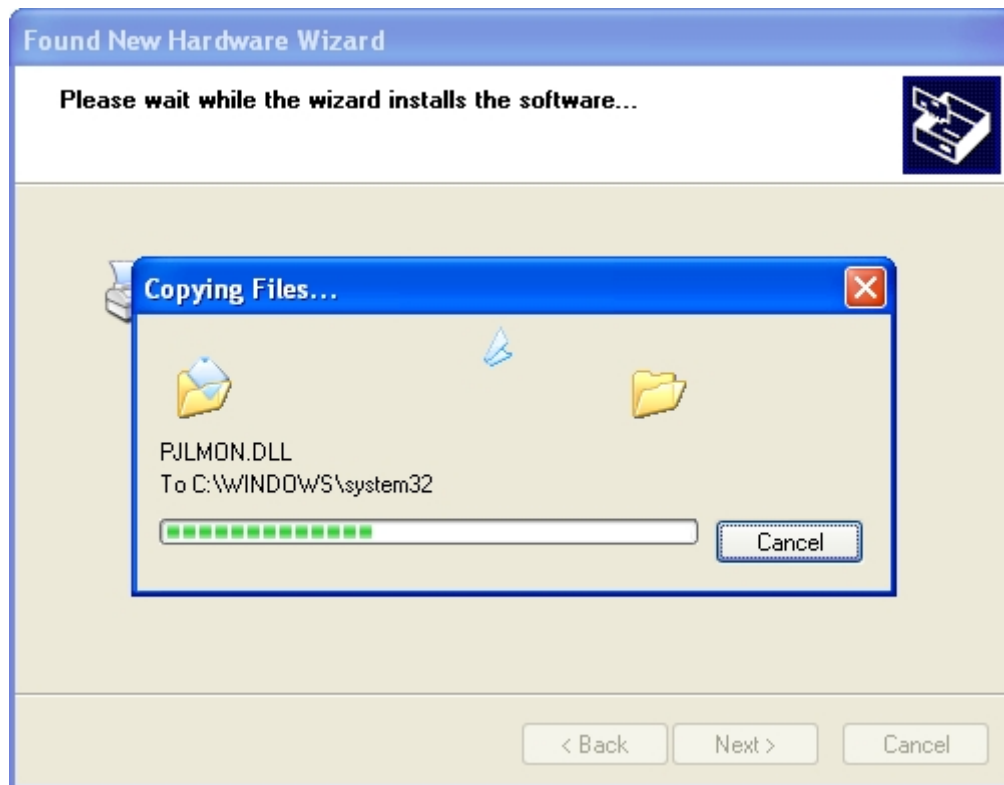
11) Click the "Next>" button.



12) Click the "Continue Anyway" button.



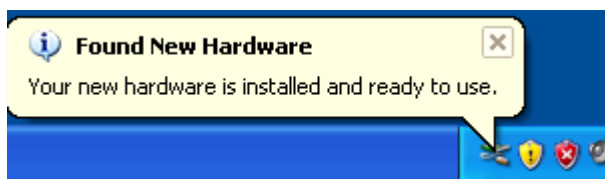
13) Copy process is displayed as shown below.



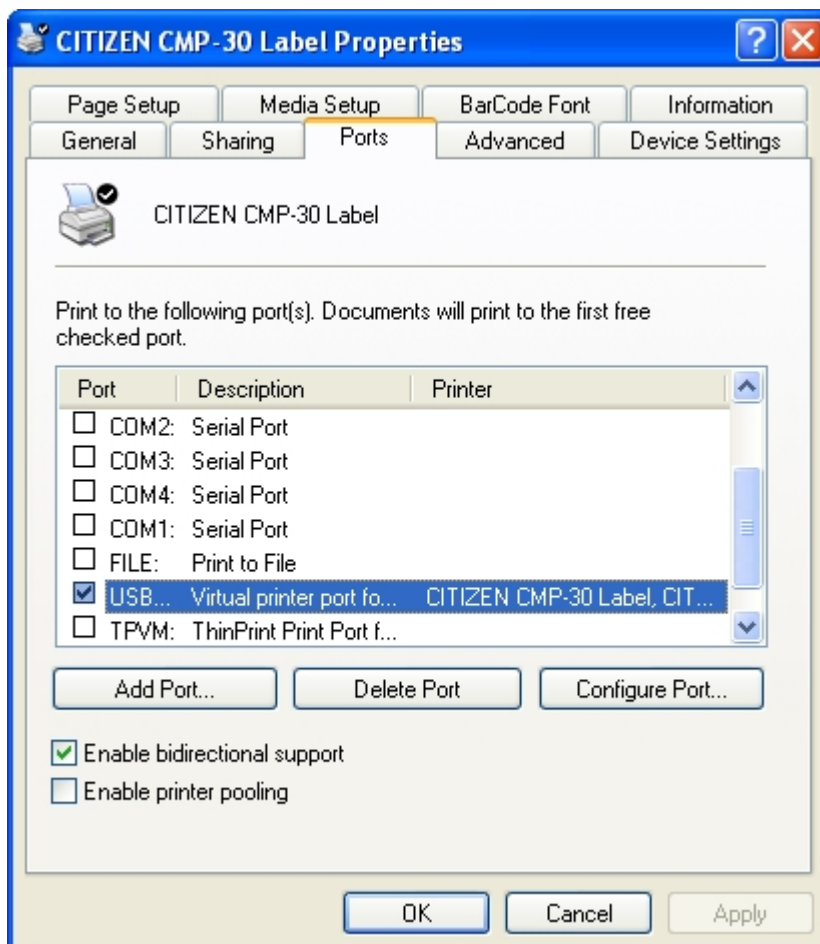
14) Click the "Finish" button.



15) Pop-up window is displayed as shown below from the Tray Icon.



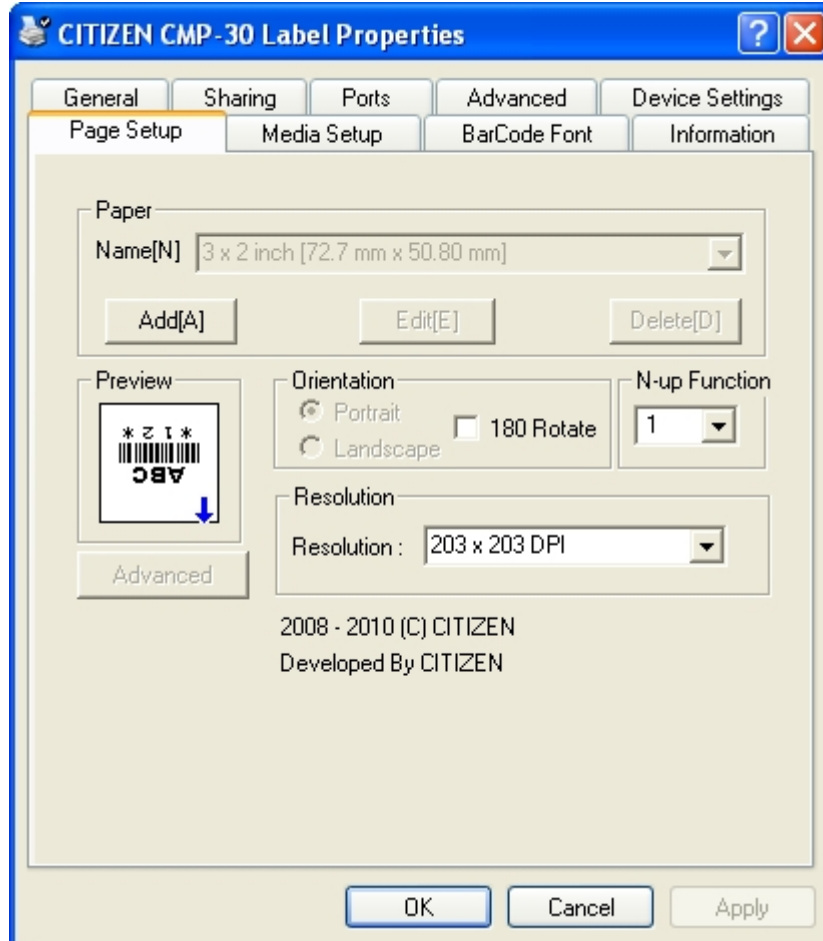
16) You will see the USB Port has been selected in the Windows Driver properties.



5. How to setup Windows Printer Driver Settings.

After installing the Windows Driver, you can use following functions.

5.1. Page Setup.

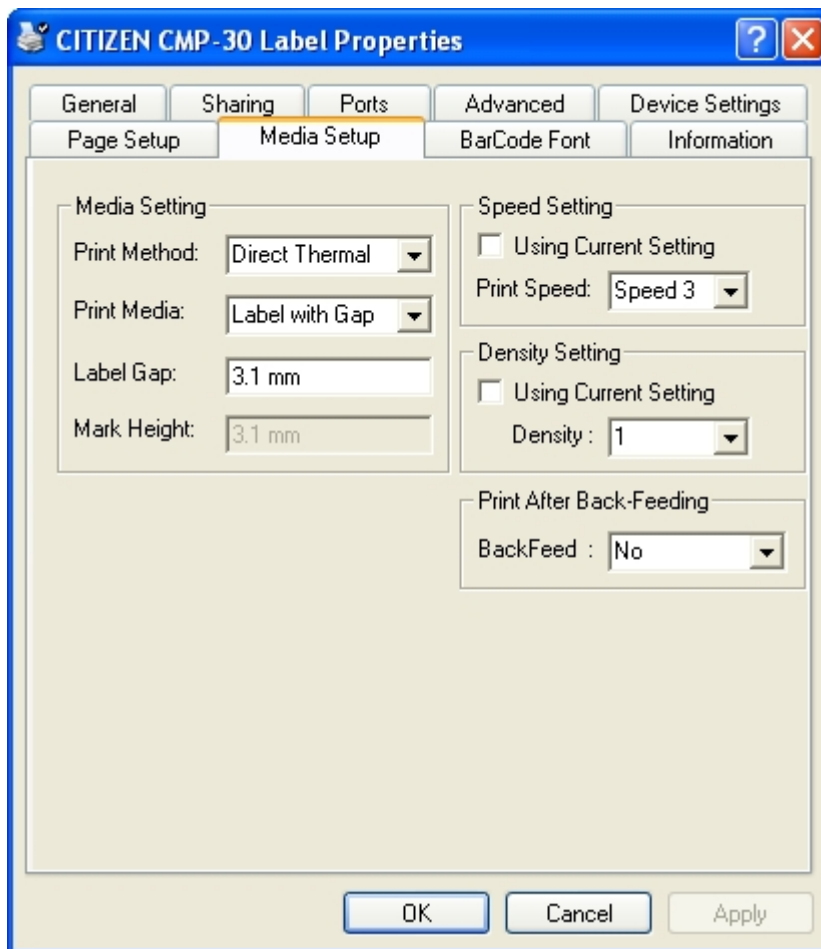


You can use paper add function on printer driver.

You can add various papers to the driver. And once the paper is added, you can easily use the added paper when you want to use it according to your need.

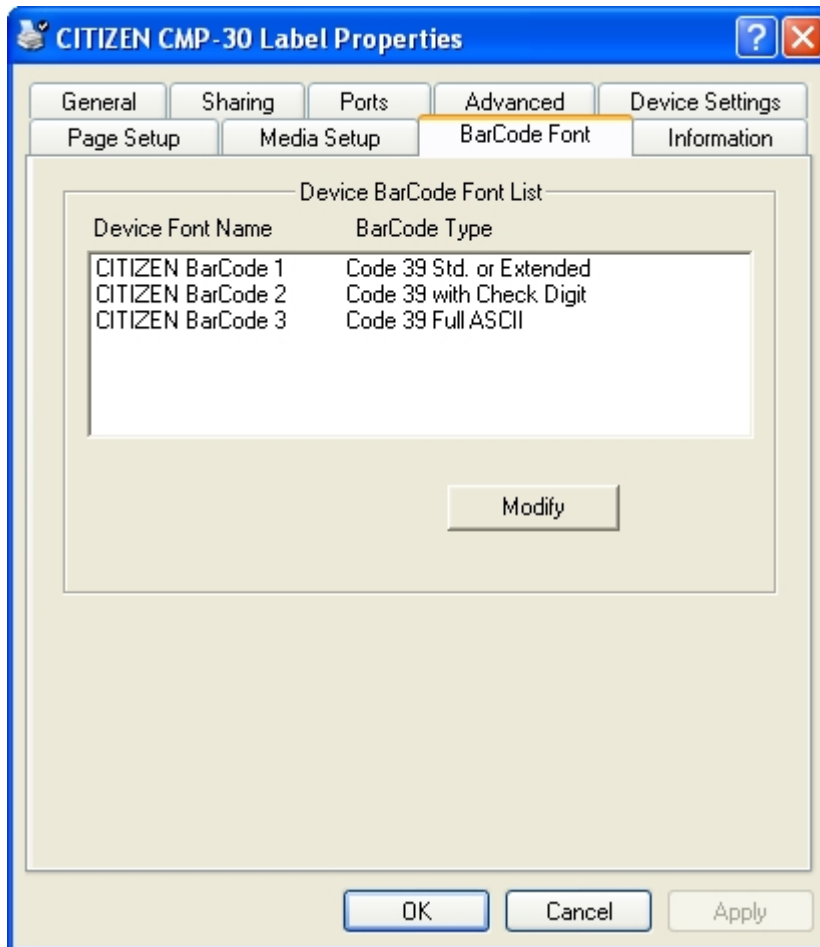
You can print two page mode by N-up Function.

5.2. Media Setup.

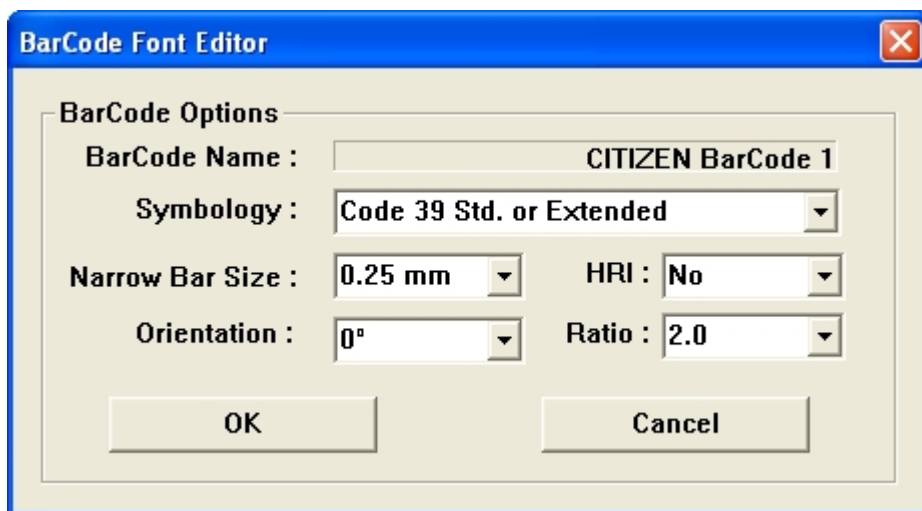


You can set up print speed and density on Media Setup.

5.3. Barcode Font Setup.



You can choose Barcode Font on the list.



The user could choose the device barcode font on the list of Symbology.

6. Windows Printer Driver Specification.

6.1. Fonts

- The Windows Driver supports following device fonts.
- The device fonts get the printer performed high speed printing.

| Printer Fonts | Size(W x H) (Dot) | Size (Point) | Description |
|------------------|----------------------|-----------------|--|
| CITIZEN Font0-0 | 8 x 9 | 8.5 | Basic device font. |
| CITIZEN Font0-1 | 16 x 9 | 8.5 | Horizontal double enlargement. |
| CITIZEN Font0-2 | 8 x 18 | 17 | Vertical double enlargement. |
| CITIZEN Font0-3 | 16 x 18 | 17 | Horizontal-vertical double enlargement |
| CITIZEN Font0-4 | 32 x 18 | 17 | Horizontal quadruple enlargement Vertical double enlargement |
| CITIZEN Font0-5 | 16 x 36 | 34 | Horizontal double enlargement Vertical quadruple enlargement |
| CITIZEN Font0-6 | 32 x 36 | 34 | Horizontal quadruple enlargement Vertical quadruple enlargement |
| *CITIZEN Font1-0 | ? x 48 | 34 | Basic device font. |
| CITIZEN Font2-0 | 20 x 12 | 68 | Basic device font. |
| CITIZEN Font2-1 | 20 x 24 | 68 | Vertical double enlargement. |
| *CITIZEN Font4-0 | ? x 47 | 8.5 | Basic device font. |
| *CITIZEN Font4-1 | ? x 94 | 8.5 | Vertical double enlargement. |
| *CITIZEN Font4-2 | ? x 45 | 17 | Basic device font. |
| *CITIZEN Font4-3 | ? x 90 | 17 | Vertical double enlargement. |
| *CITIZEN Font4-4 | ? x 180 | 17 | Vertical quadruple enlargement. |
| *CITIZEN Font5-0 | ? x 24 | 34 | Basic device font. |
| *CITIZEN Font5-1 | ? x 48 | 34 | Vertical double enlargement. |
| *CITIZEN Font5-2 | ? x 46 | 34 | Basic device font. |
| *CITIZEN Font5-3 | ? x 92 | 68 | Vertical double enlargement. |
| CITIZEN Font6-0 | 28x27 | 68 | Basic device font. |
| CITIZEN Font7-0 | 12x24 | 68 | Basic device font. |
| CITIZEN Font7-1 | 12x48 | 68 | Vertical double enlargement. |

* = Proportional pitch font

6.2. Barcodes.

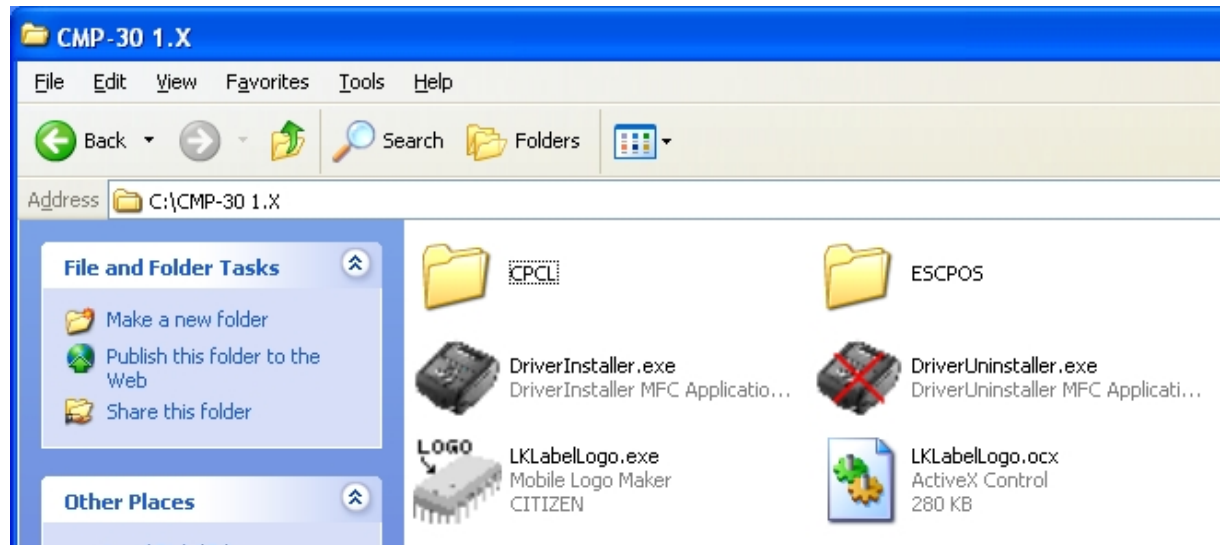
- Following device barcode fonts are supported by the Windows Driver.

Select the device barcode font corresponding to the bar code type and input data to print it out.

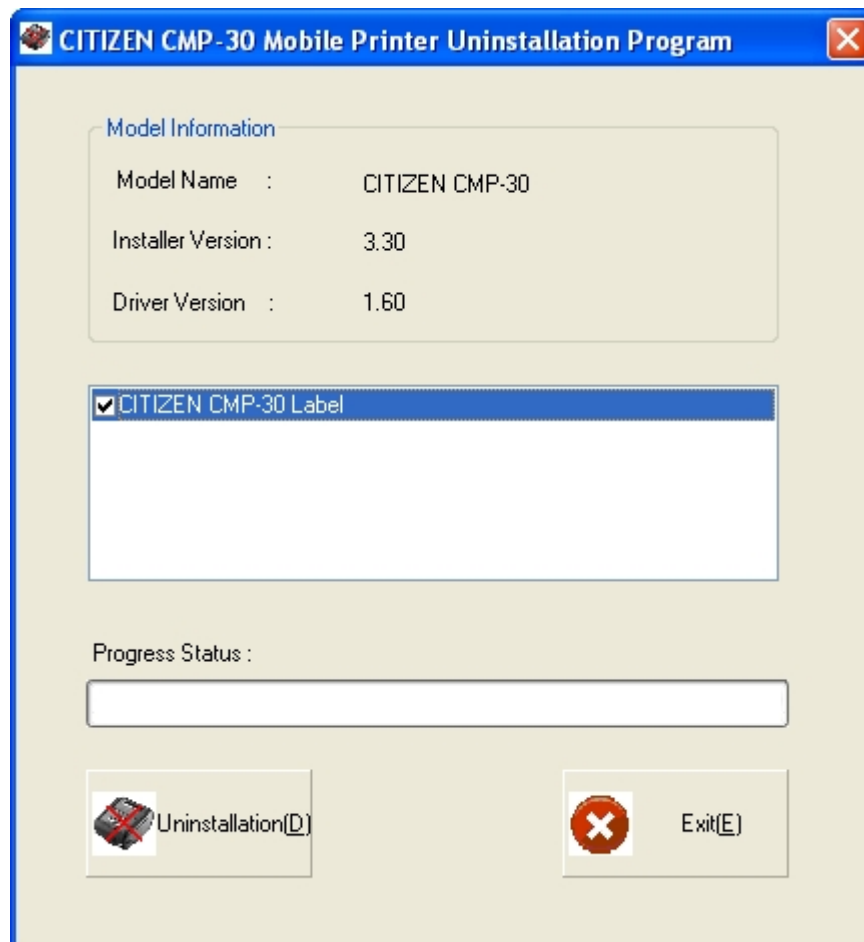
| Printer font name for bar code | Font size(Point) | Description |
|--------------------------------|------------------|---------------------|
| CITIZEN Barcode 1 | 8 ~ 72 | Device BarCode Font |
| CITIZEN Barcode 2 | 8 ~ 72 | Device BarCode Font |
| CITIZEN Barcode 3 | 8 ~ 72 | Device BarCode Font |

7. How to delete the Windows Driver.

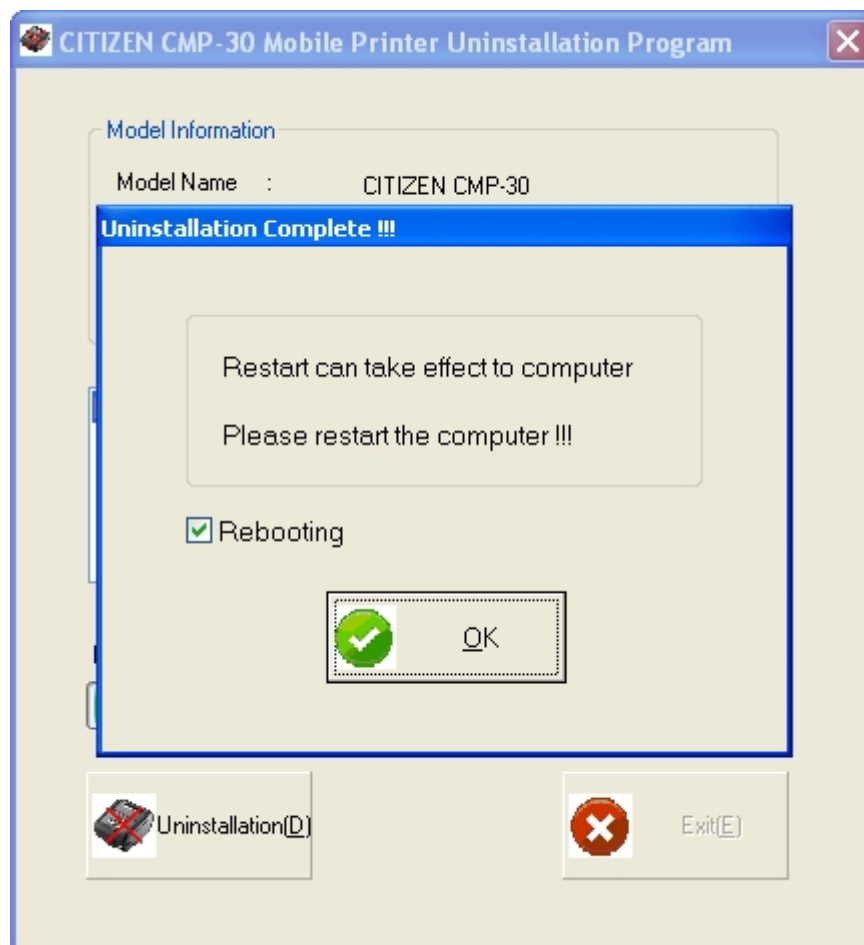
- 1) Move to the “c:\CMP-30 1.X” Directory and execute the DriverUninstaller.exe.



- 2) Check the installed driver and click the “Uninstallation(D)” button.



3) Click the "OK" button to finish the uninstallation.



8. How to use the Windows Driver in the application.

This utility includes the Sample to guide how to use the Windows Driver on the Visual Basic. You can check the details through the Visual basic sample program.