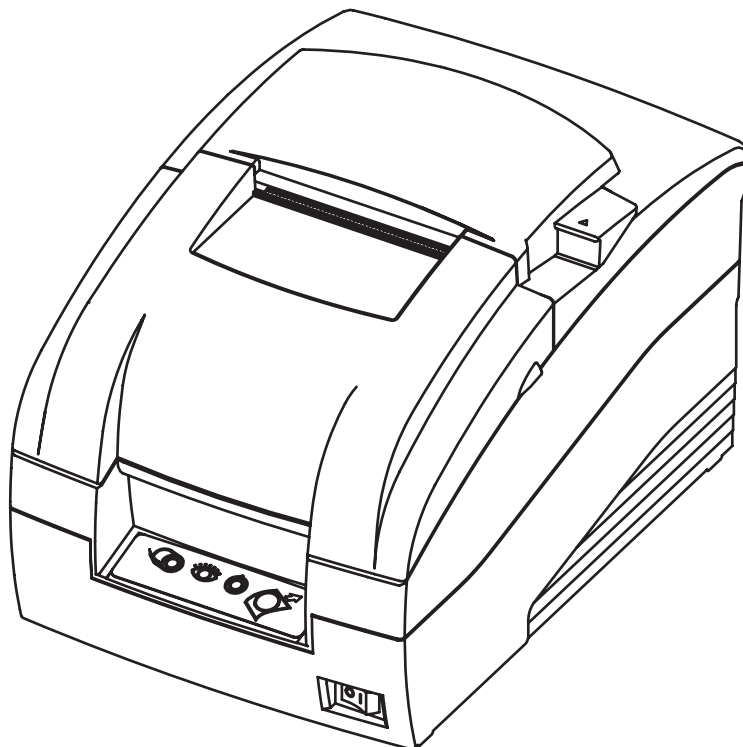


Windows Driver Install Manual

SRP-275

Impact Printer
Rev. 2.00



■ Table of Contents

1. Foreword.....	3
2. Operating Environment	3
3. Installing the Driver	4
3-1 Download windows driver from website.....	4
3-2 Install windows driver with autoinstaller	4
3-3 Printer Settings	5
4. Main Specifications	6
4-1 Printer Fonts	6
4-2 Special Functions	7
4-3 Resolutions	8
4-4 Paper Sizes	8
5. Controlling the Printer from VB	9
5-1 Selecting the Printer Driver	9
5-2 Printing Text	9
5-3 Opening the Cash Drawer	10
5-4 Cutting the Paper	10
6. Using the SRP-275 Printer from WordPad.....	11
6-1 WordPad Environment.....	11
6-2 Printing Text.....	11
6-3 Opening the Cash Drawer	12
6-4 Cutting the Paper.....	13
7. Using the SRP-275 Printer Properties	14
7-1 Additional Commands.....	14

1. Foreword

This manual explains how to install and use Windows printer drivers for SAMSUNG SRP-275 printers. These drivers make it possible for Windows applications to print to BIXOLON SAMSUNG SRP-275 printers. Please read this manual carefully so that you can take full advantage of the driver's capabilities.

2. Operating Environment

The BIXOLON SAMSUNG SRP-275 printer drivers can run on any of the following operating systems.

Microsoft Windows 95

Microsoft Windows 98

Microsoft Windows ME

Microsoft Windows NT 4.0

Microsoft Windows 2000

Microsoft Windows XP

Microsoft Windows 2003 Server

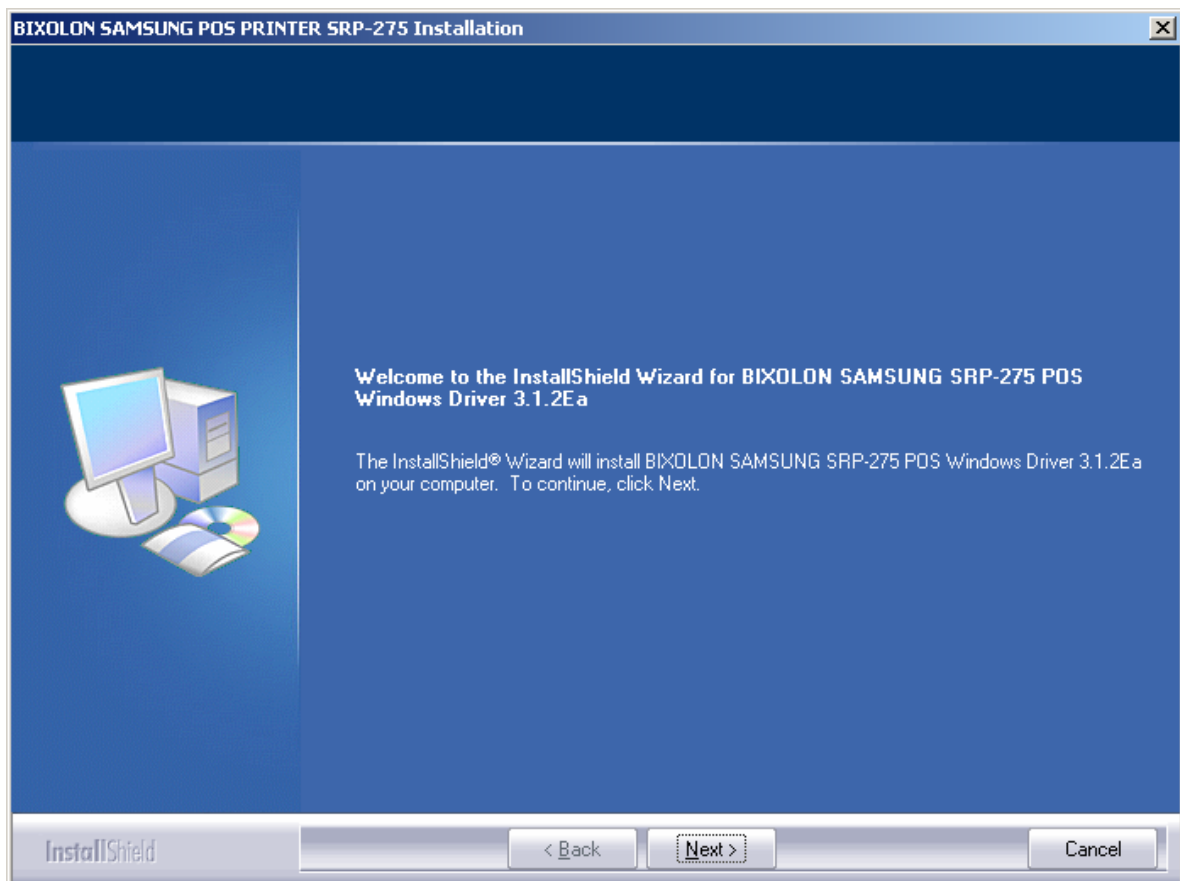
3. Installing the Driver

3-1 Download windows driver from website

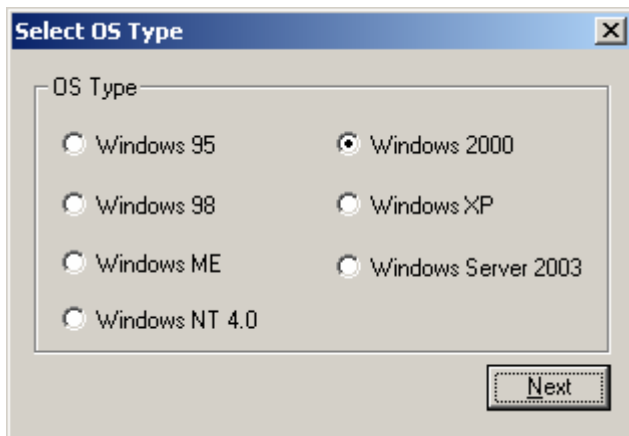
- 1) Connect our website(<http://www.bixolon.com>)
- 2) Select language
- 3) Click “Download” tab of “Support & Service”
- 4) Download “Windows Driver” of SRP-275 section.

3-2 Install windows driver with autoinstaller

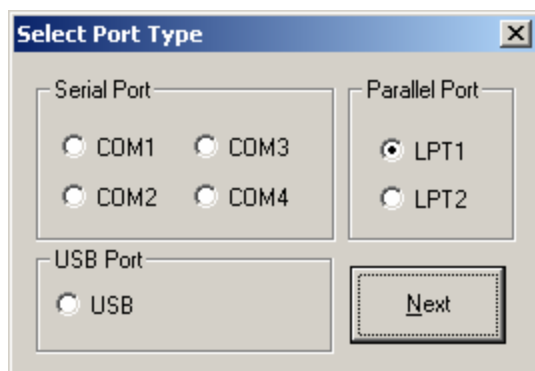
- 1) Double click “SRP-275_V3.1.2Ea.exe” file.
- 2) Installer program extract files to current folder and installation start.
- 3) Click “Next” button.



4) Select OS Type and click “Next” button.



5) Select port type and click “Next” button.



6) When installation finished, you must reboot your system.

3-3 Printer Settings

This section is explained the way of following Printer Settings.

- Printer Resolution
- Paper Size
- Orientation

In Windows 95/98/ME, this can be set in the printer’s “Properties” dialog.

In Windows NT4.0, it can be set in the printer’s “Document Default” dialog.

In Windows 2000/XP, it can be set in the printer’s “Printing Preferences” dialog.

4. Main Specifications

4-1 Printer Fonts

These drivers support use of printer fonts as well as Windows fonts. Use of printer fonts permits faster printing. Available printer fonts are listed below.

“Built-in fonts of a printer” can be specified with the application programs. The “built-in fonts” are as follows.

- Printer Font (type A, Small)
- Printer Font (type B, Small)

The font names what the user can choose in to the application are as follows.

2 types of character-height can be chosen in each font.

Six kinds of the FontAXxX, the FontAXxX [Ext.], the FontAXxX[255], FontBXxX, the FontBXxX [Ext.], the FontBXxX[255]. The character code of 128 bytes of 80H - FFH varies in the difference in these printer fonts. [FontAXxX font, FontBXxX font support an Latin1 character code\(Code Page 16 :WPC 1252\).](#) and, [FonAXxX \[Ext.\] font, FontBXxX\[Ext.\] support International character code\(Code Page 0 : 437\).](#) And [FonAXxX \[255\] font, FontBXxX\[255\] support specified character code\(Code Page 255\) for additional font in firmware.](#)

Printer Fonts			Character size(dot)	Sizes (point)
FontA1x1	FontA1x1[Ext.]	FontA1x1[255]	FontA1x1(9x9)	9
FontA1x2	FontA1x2[Ext.]	FontA1x2[255]	FontA1x2(9x18)	18
FontA2x1	FontA2x1[Ext.]	FontA2x1[255]	FontA2x1(18x9)	9
FontA2x2	FontA2x2[Ext.]	FontA2x2[255]	FontA2x2(18x18)	18
FontB1x1	FontB1x1[Ext.]	FontB1x1[255]	FontB1x1(7x9)	9
FontB1x2	FontB1x2[Ext.]	FontB1x2[255]	FontB1x2(7x18)	18
FontB2x1	FontB2x1[Ext.]	FontB2x1[255]	FontB2x1(14x9)	9
FontB2x2	FontB2x2[Ext.]	FontB2x2[255]	FontB2x2(14x18)	18

Printer font for special function	Function	Size(point/dot)
FontControl	<ul style="list-style-type: none"> - Open Drawer 1/2 - Cut receipt - Cut receipt(without paper feeding) - Justification(Left/Center/Right) - Output HT,Output LF, Output CR - Print NV image 	(9 / 9x9)

4-2 Special Functions

The SRP-275 Printer can be used to execute a variety of special non-printing functions, as indicated in the table below.

You can execute these functions by selecting the printer's special "FontControl" font and then sending the appropriate character code to the driver. (Note that you cannot use the "FontControl" font to print normal characters.)

Character	Special Function	Note
5	HT is output	
6	LF is output	
7	CR is output	
a	Open Drawer 2 (50ms drive pulse width)	
b	Open Drawer 2 (100ms drive pulse width)	
c	Open Drawer 2 (150ms drive pulse width)	
d	Open Drawer 2 (200ms drive pulse width)	
e	Open Drawer 2 (250ms drive pulse width)	
g	Cut Receipt (partial cut) without paper feeding	
w	Text is aligned left	
x	Text is centered	
y	Text is aligned right	
A	Open Drawer 1 (50ms drive pulse width)	
B	Open Drawer 1 (100ms drive pulse width)	
C	Open Drawer 1 (150ms drive pulse width)	
D	Open Drawer 1 (200ms drive pulse width)	
E	Open Drawer 1 (250ms drive pulse width)	
G	Print NV 1st image	
H	Print NV 2nd image	
I	Print NV 3rd image	
J	Print NV 4th image	
K	Print NV 5th image	
P	Cut Receipt (partial cut)	

4-3 Resolutions

The resolution settings supported by SRP-275 printer are as follows

- 160 × 72
- 160 × 144
- 80 × 72

4-4 Paper Sizes

The paper sizes supported by SRP-275 printer are as follows.

- 76 × 3276 mm[275]
- 69.5 × 3276 mm[275]
- 57.5 × 3276 mm[275]
- 76 × 297 mm[275]
- 69.5 × 297 mm[275]
- 57.5 × 297 mm[275]
- Custom Size (Windows 9x support)

The following table shows the recommended margins for SRP-275 printer. Refer to this table when setting margins from your printing applications.

Printer	Margins				Printer Area
	Left[mm]	Right[mm]	Top[mm]	Bottom[mm]	Width[mm]
SRP-275	0	0	0	0	63.5

5. Controlling the Printer from VB

This section shows how you can control the SRP-275 Printer using Visual Basic (Version 6.0). Note that the SRP-275 Printer drivers include sample Visual Basic programs that provide additional examples.

5-1 Selecting the Printer Driver

The following code establishes the specified printer driver as your "default printer."

◆ VISUAL BASIC

```
For Each prnPrinter In Printers
If prnPrinter.DeviceName = "BIXOLON SAMSUNG SRP-275" Then
Set Printer = prnPrinter
Exit For
End If
Next
```

5-2 Printing Text

The following code prints a text string using a Windows font, and then prints another text string using a printer font. Each string gives the name and size of the font being used.

◆ VISUAL BASIC

```
'Print in Windows font
Printer.FontSize = 9
Printer.FontName = "Arial"
Printer.Print "Arial"

'Print in printer font
Printer.FontSize = 9
Printer.FontName = "FontA1x1"
Printer.Print "FontA1x1"
Printer.EndDoc
```

5-3 Opening the Cash Drawer

The next example shows how to open the desired cash drawer at the desired speed.

◆ VISUAL BASIC

```
'Set up the control font.  
Printer.FontSize = 9  
Printer.FontName = "FontControl"  
  
Printer.Print "A"  
'Use special-function character to open the cash drawer.  
'A: Open drawer 1 at 50ms  
'B: Open drawer 1 at 100ms  
'C: Open drawer 1 at 150ms  
'D: Open drawer 1 at 200ms  
'E: Open drawer 1 at 250ms  
'a: Open drawer 2 at 50ms  
'b: Open drawer 2 at 100ms  
'c: Open drawer 2 at 150ms  
'd: Open drawer 2 at 200ms  
'e: Open drawer 2 at 250ms  
Printer.EndDoc
```

5-4 Cutting the Paper

The following code causes the printer to cut the paper.

◆ VISUAL BASIC

```
'Set up the control font.  
Printer.FontSize = 9  
Printer.FontName = " FontControl"  
Printer.Print "P".  
'Use special-function character to cut the paper  
'P: Partial cut  
'g: Partial cut without paper feeding  
Printer.EndDoc
```

6. Using the SRP-275 Printer from WordPad

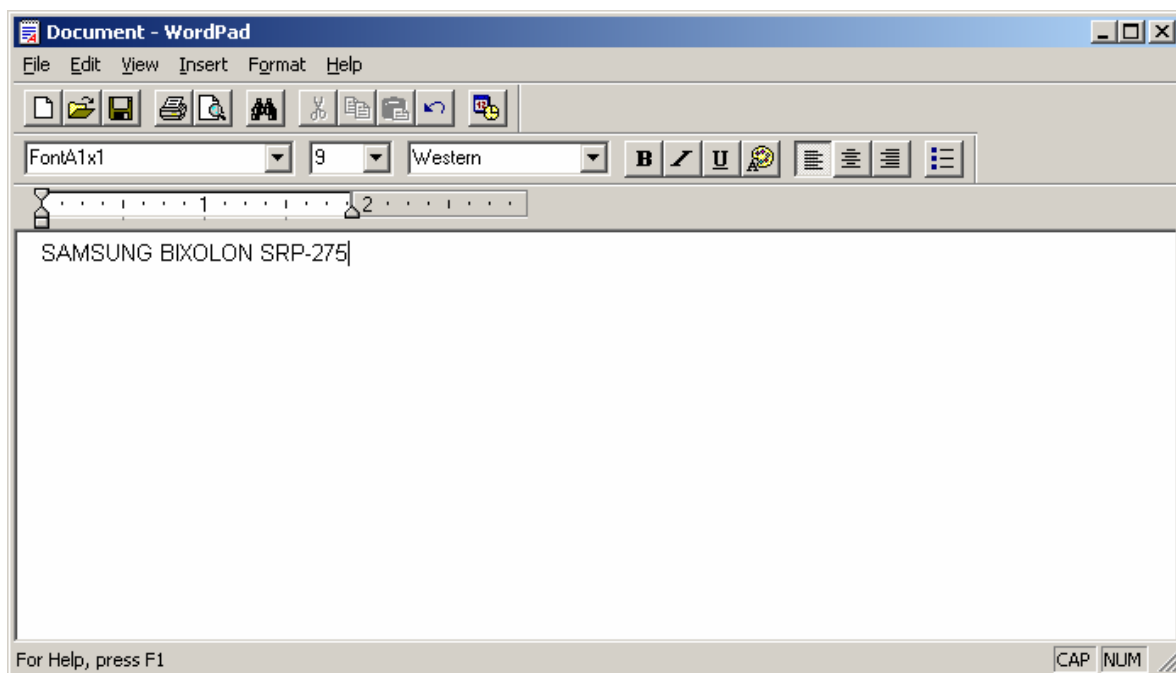
6-1 WordPad Environment

WordPad is more adequate to test printer than Microsoft Word. Make it sure that SRP-275 has been chosen as default printer and then go further with WordPad like below. Start up WordPad, and enter appropriate settings for the follows.

- Size [\[Refer to Section 4.5, "Paper Sizes" \]](#)
- Resolution [\[Refer to Section 4.4, "Resolutions" \]](#)
- Margins [\[Refer to Section 4.5, "Paper Sizes" \]](#)

6-2 Printing Text

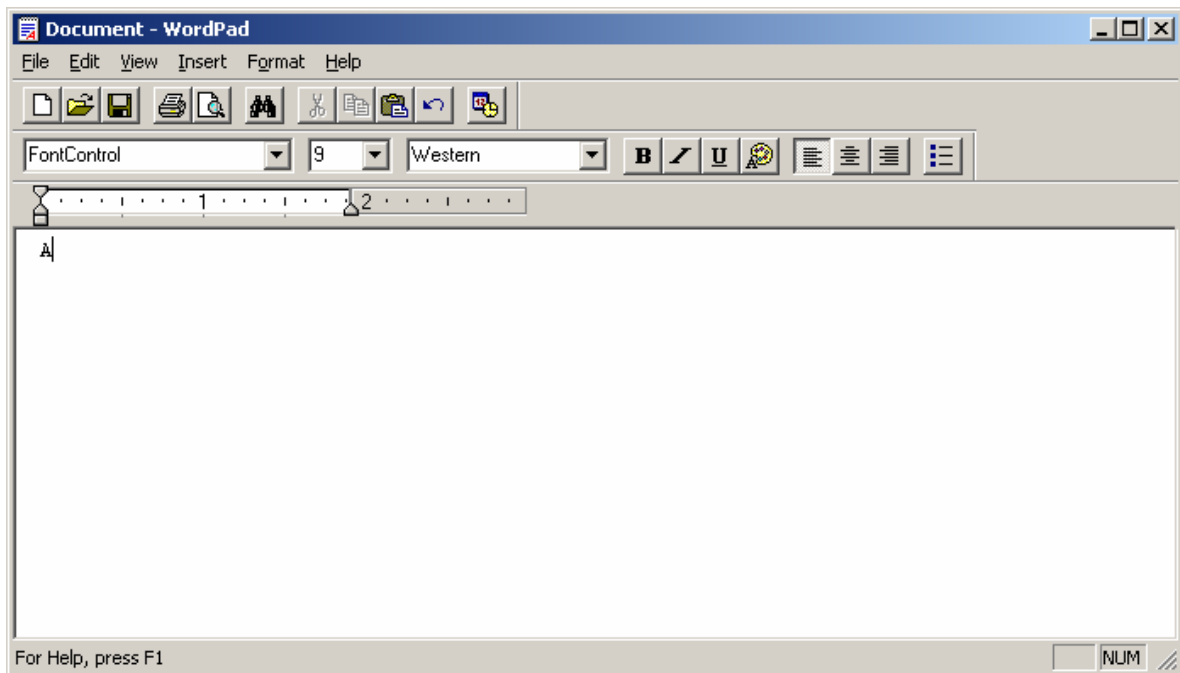
Use the following procedure to generate a printout from WordPad.



- 1) Select the font you wish to use from the font list.
- 2) Select the font size you wish use from the font-size list.
- 3) Type in some text into the WordPad text-input area.
- 4) Open the File menu, and click on Print.

For fastest printing, select a printer font form the font list.

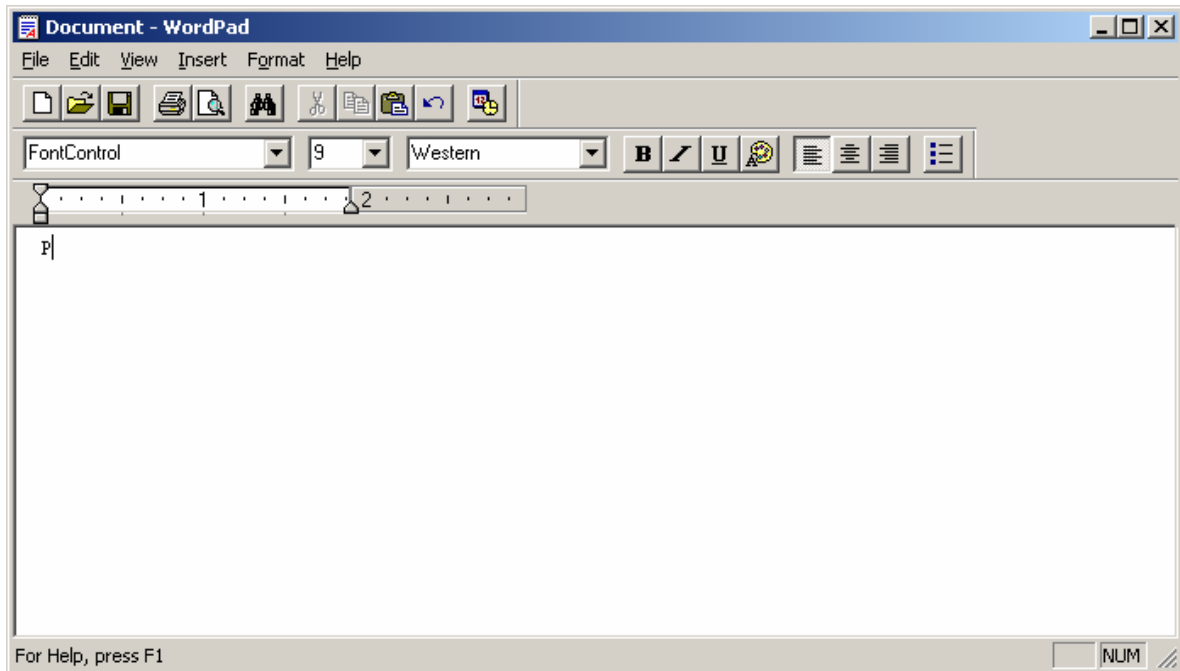
6-3 Opening the Cash Drawer



- 1) Select the "FontControl" font from the font list.
- 2) Set the font size to 9
- 3) Type an "A" into the WordPad text-input area.
- 4) Open the File menu, and click on Print.

Clicking on Print will cause cash drawer #1 to open at a drive speed of 50ms. By changing the character that you input at Step 3, you can select a different drive speed or open the other drawer. Refer to Section 4.2, "Special Functions," for a listing of characters and their functions.

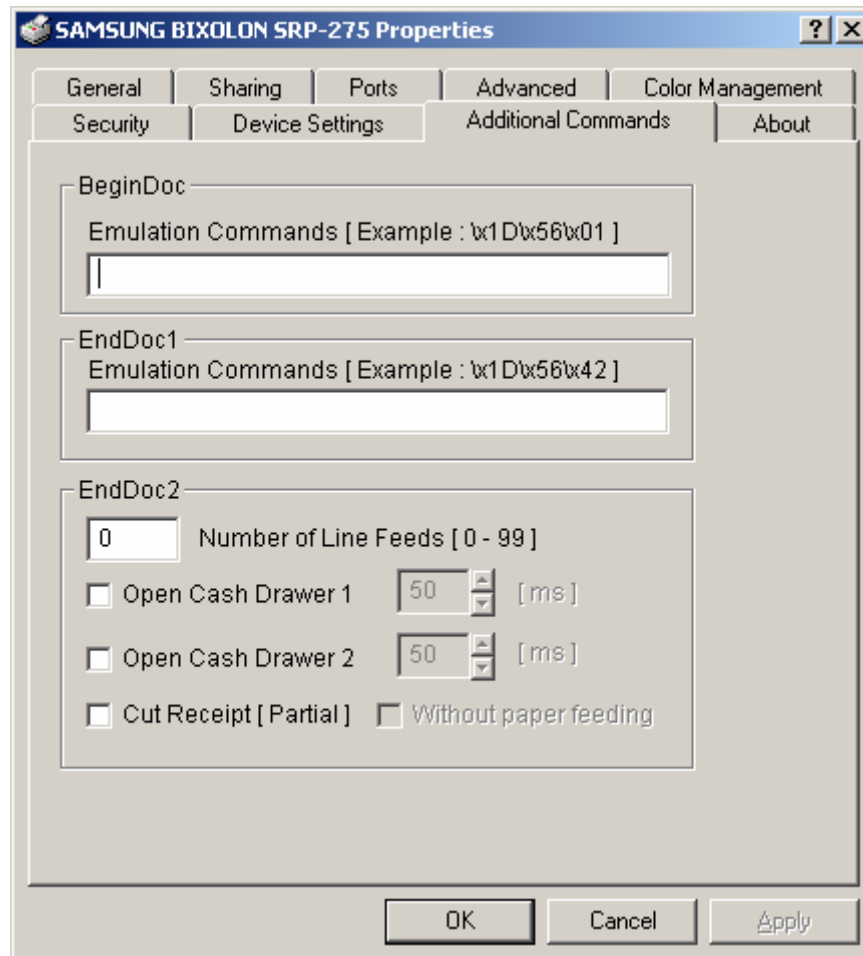
6-4 Cutting the Paper



- 1) Select the "FontControl" font from the font list.
- 2) Set the font size to 9
- 3) Type in an "P"
- 4) Open the File menu, and click on Print.

7. Using the SRP-275 Printer Properties

7-1 Additional Commands



- 1) Logo Printing
Cut Receipt (partial cut) without paper feeding.
Type the command to cut.
ex) \x1D\x56\x01 = **Cut Receipt**
- 2) Promotion printing
Cut Receipt (partial cut).
Type the command to cut.
ex) \x1D\x56\x42 = **Cut Receipt**
- 3) This is where you enter the number of line feeds that will be done after a document is printed.
- 4) You can fire cash drawer 1 or 2.
- 5) Whether to cut or not at the end of receipt.
- 6) Cutting without paper feeding.