

BIXOLON®

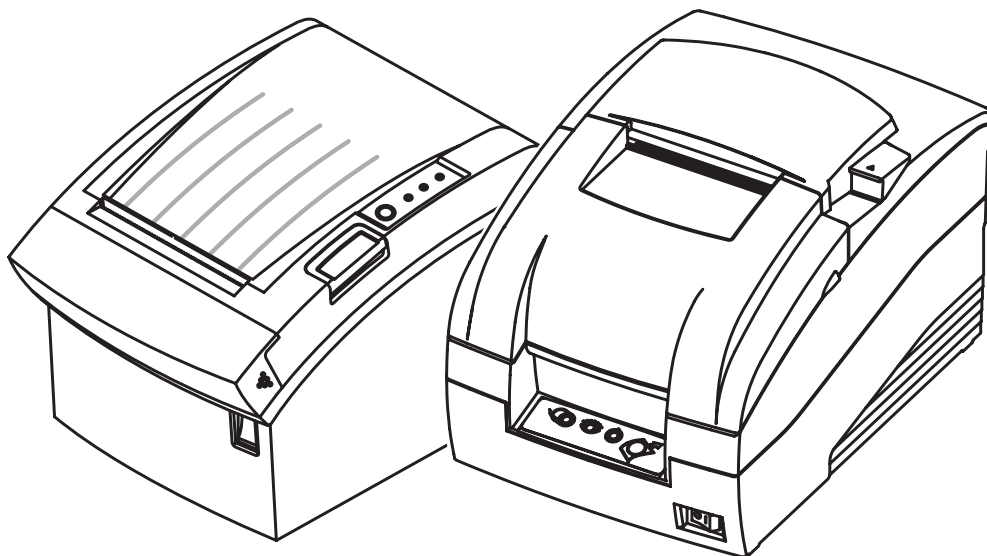
SAMSUNG mini printers

SAMSUNG

Installation Manual USB & LPT PnP Process

Rev. 2.00

**SRP-270 / SRP-275
SRP-280 / SRP-350
SRP-372 / SRP-370
SRP-500 / SRP-350plus
SRP-770 / SRP-770II**



<http://www.samsungminiprinters.com>

■ Table of Contents

1. Foreword.....	3
2. Operating Environment	3
3. Installing the USB Device Driver	3
3-1 Windows 98/ME.....	3
3-2 Windows 2000	9
3-3 Windows XP/2003 Server	12

1. Foreword

When interface of printer is USB type or “Add new hardware wizard” is pop-up from LPT PnP(plug-and-play), this manual explains how to install the Windows Driver.

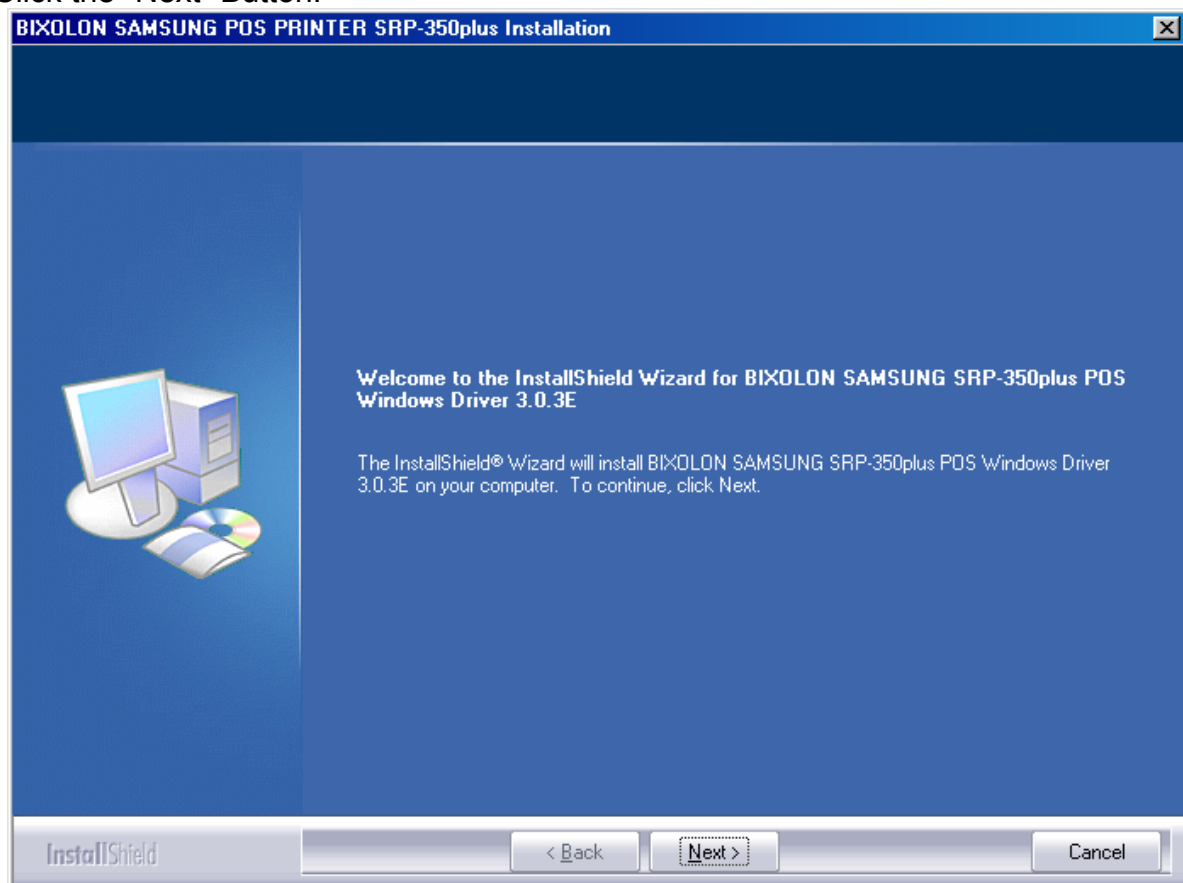
2. Operating Environment

Microsoft Windows 98 Gold
Microsoft Windows 98 Second Edition
Microsoft Windows Millennium Edition
Microsoft Windows 2000
Microsoft Windows XP
Microsoft Windows 2003 Server
Microsoft Windows Embedded For Point Of Service

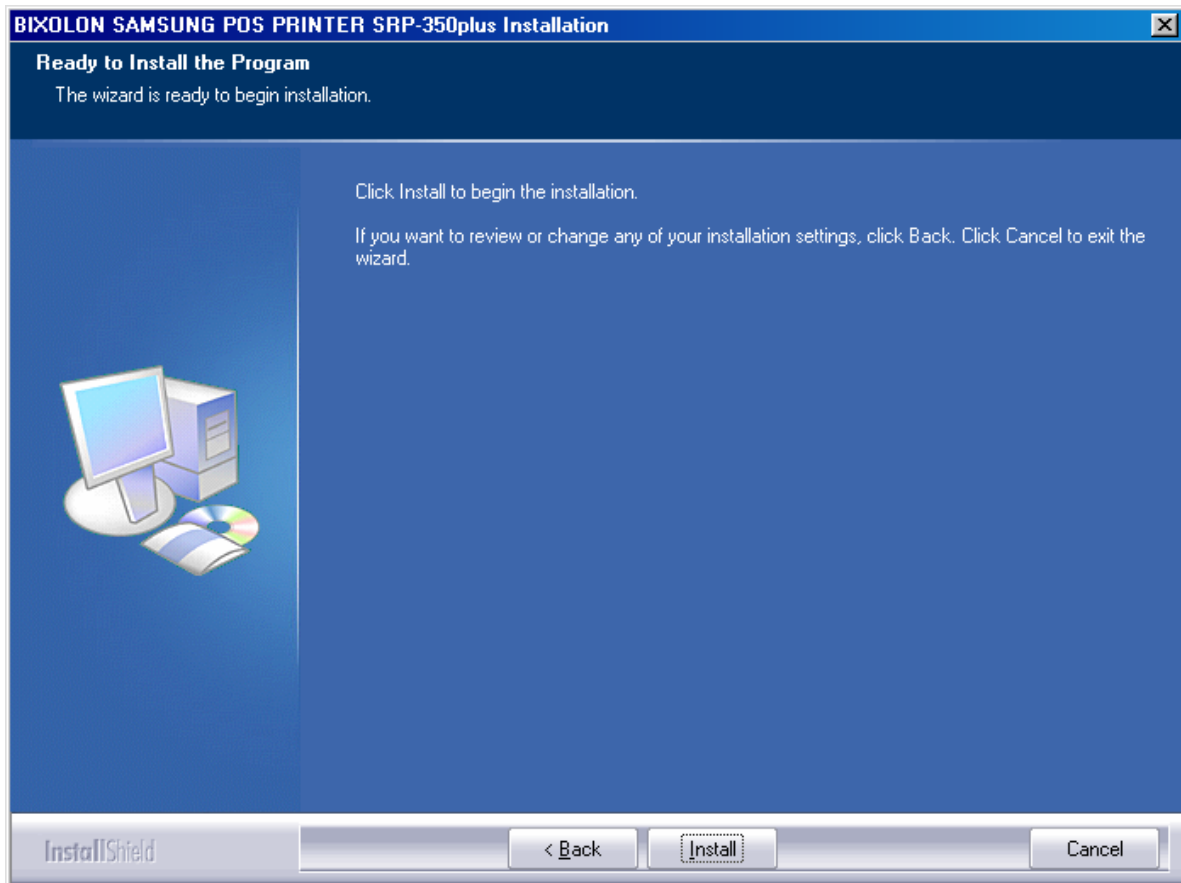
3. Installing the USB Device Driver

3-1 Windows 98/ME

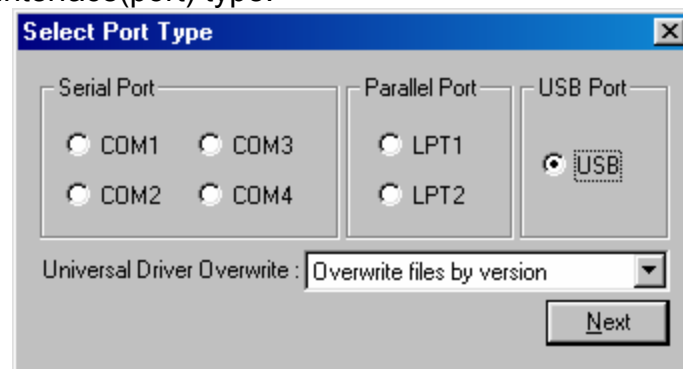
- 1) Double click the Installer file.
- 2) Click the “Next” Button.



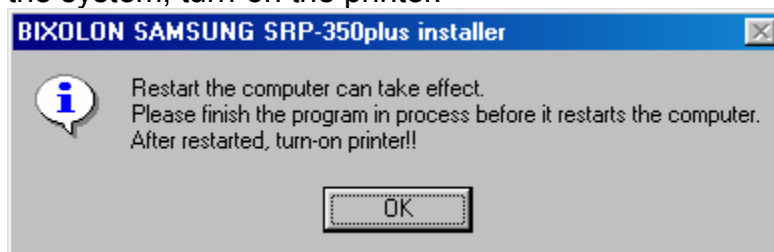
3) Click the “Install” Button.



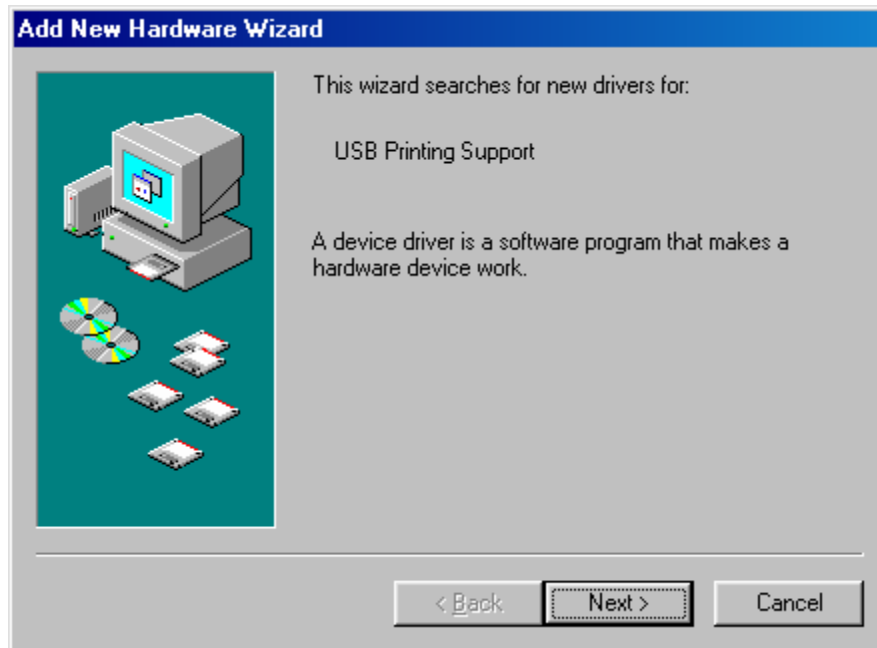
4) Select the “USB” interface(port) type.



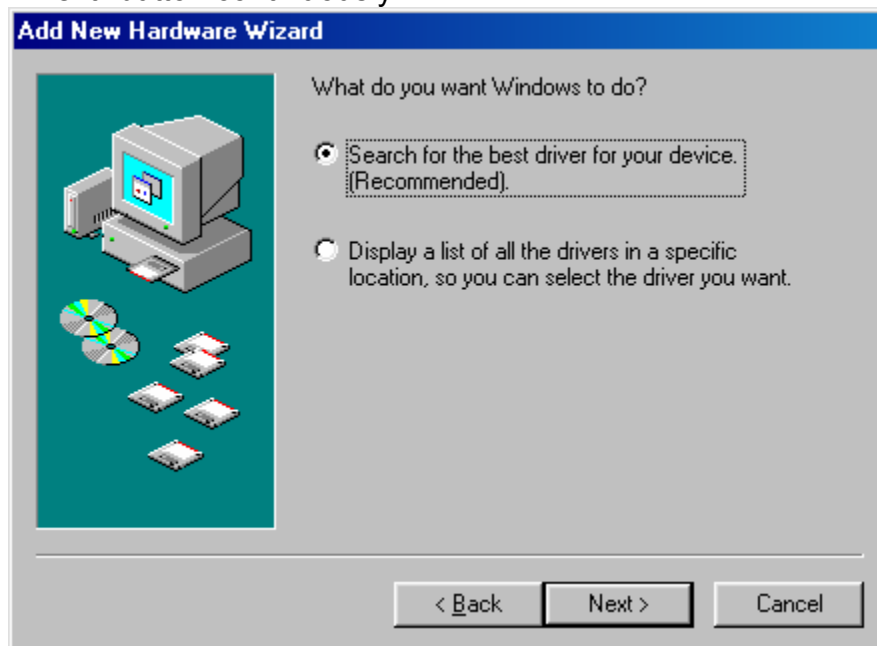
5) After restarting the system, turn-on the printer.



6) When “Add new hardware wizard” pop-ups to install the “USB print support” driver, then click the “Next” button.

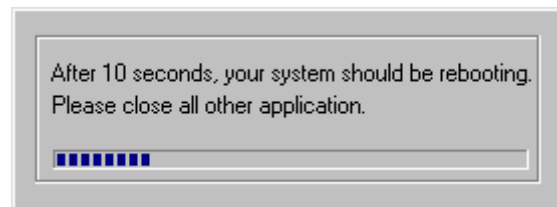


7) Please click “Next” button continuously.

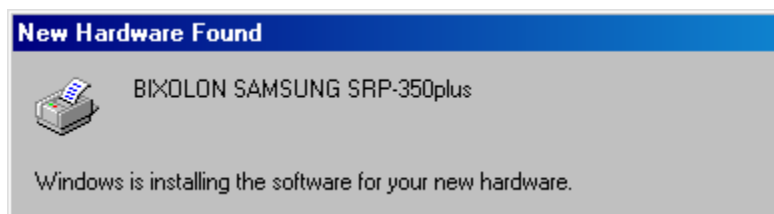




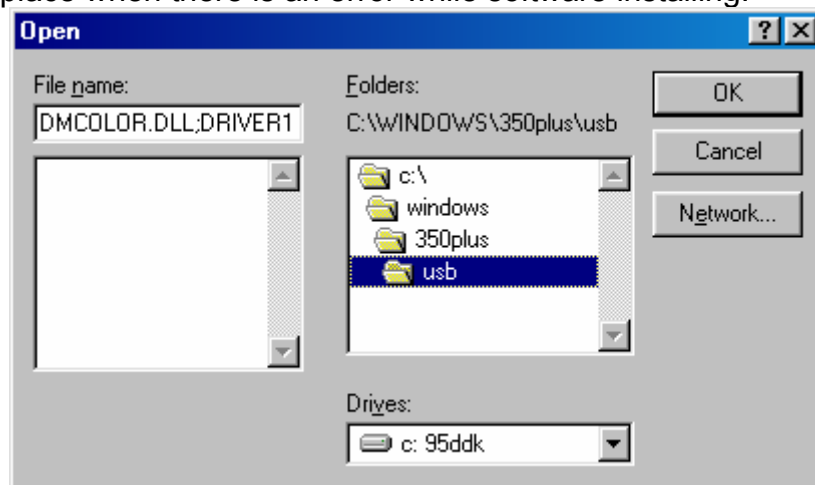
8) When “USB print support” driver has installed, your system will restart automatically.



9) After System's rebooting, printer driver has been installed automatically.

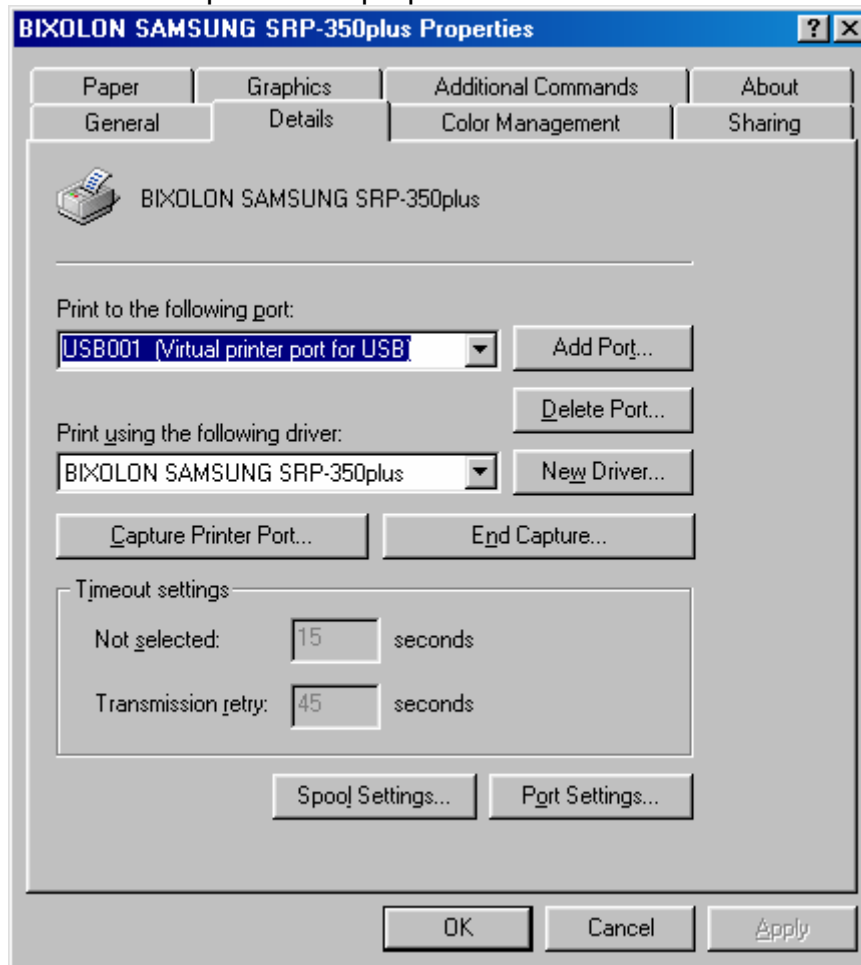


10) Appoint the place when there is an error while software installing.



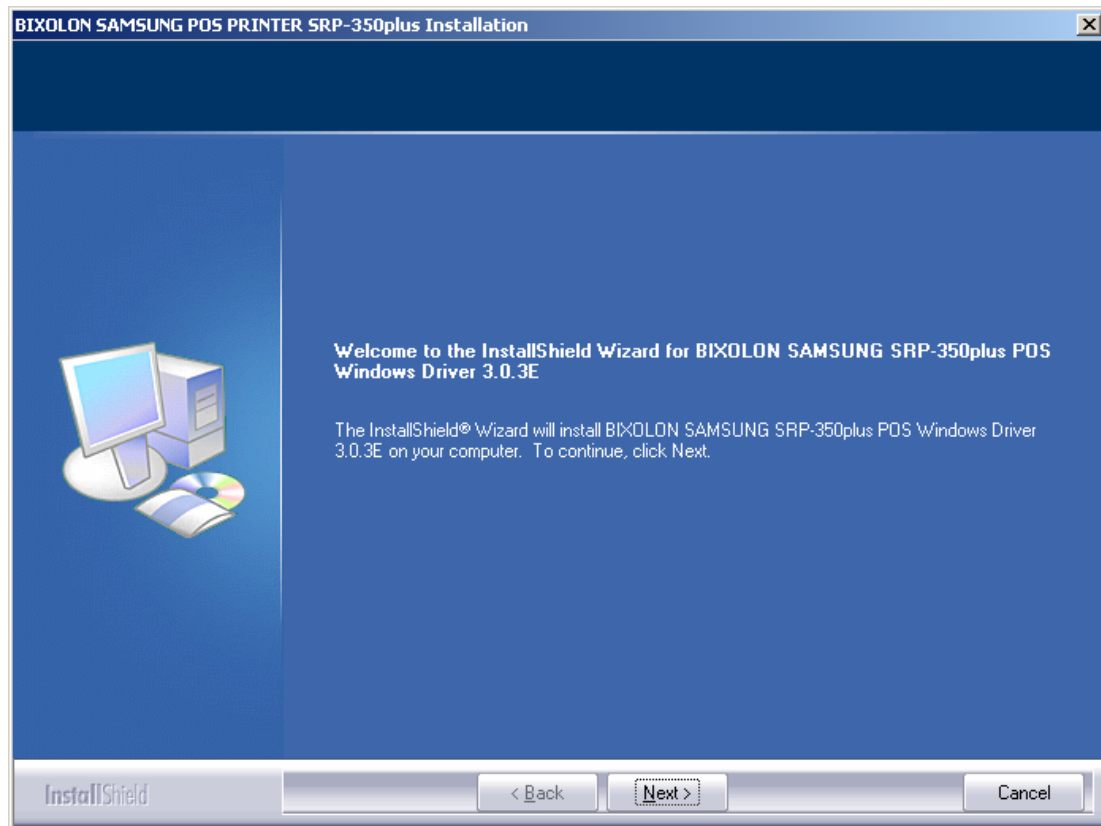
※ appoint the place : "C:\WINDOWS\model name(SRP-350, 350plus, SRP-280, etc)\usb"

11) USB Port has been set-up in Driver properties.

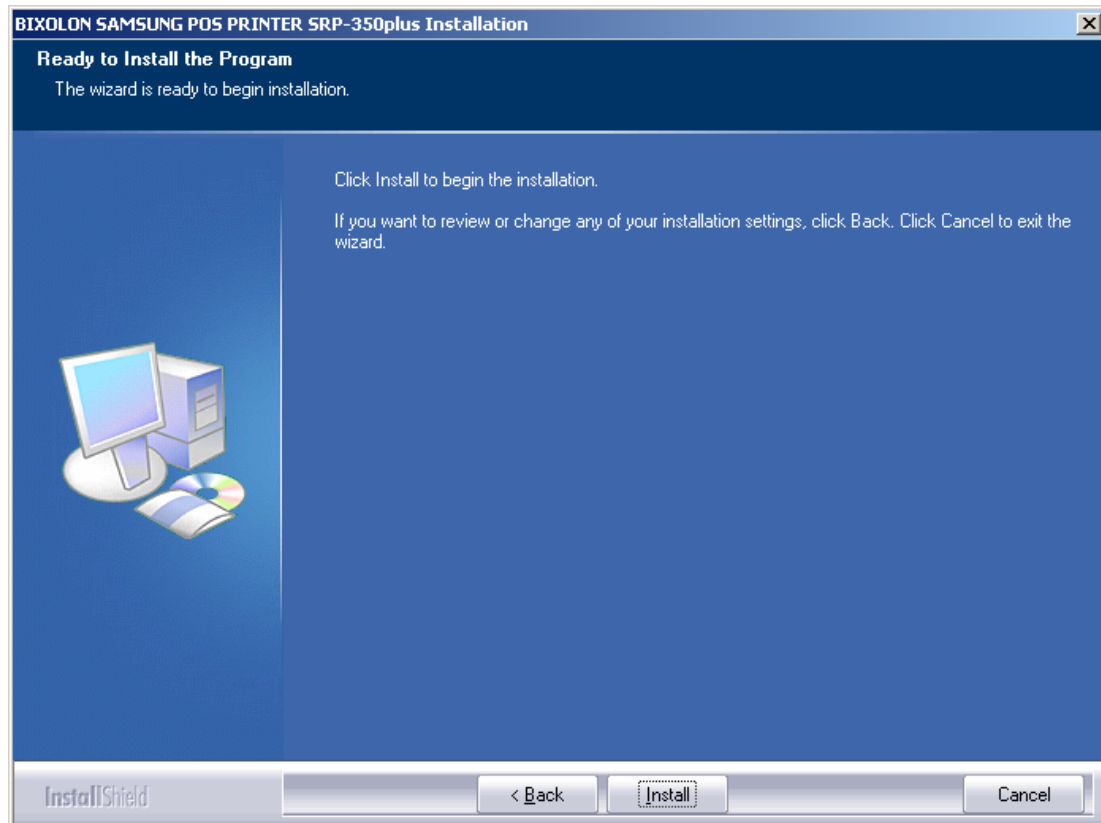


3-2 Windows 2000

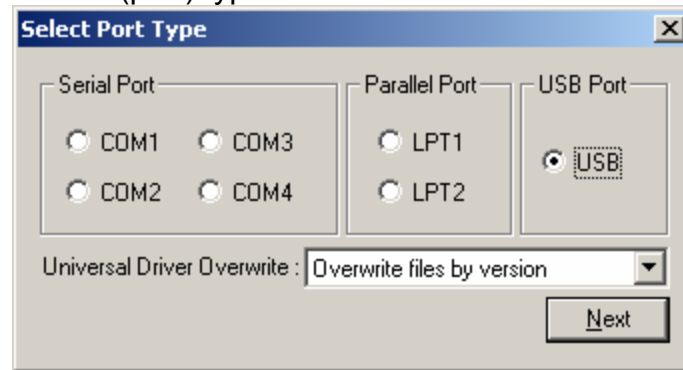
- 1) Double click the Installer file.
- 2) Click the “Next” Button.



- 3) Click the “Install” Button.



4) Select the “USB” interface(port) type.

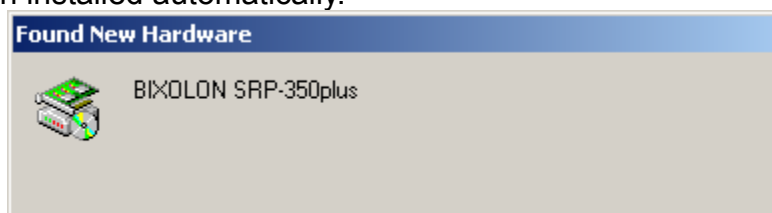


※ When You see the Warning Pop-up like above picture, please click the Yes button. It doesn't take any bad affect to the OS as well as no problem to use the printer and driver.

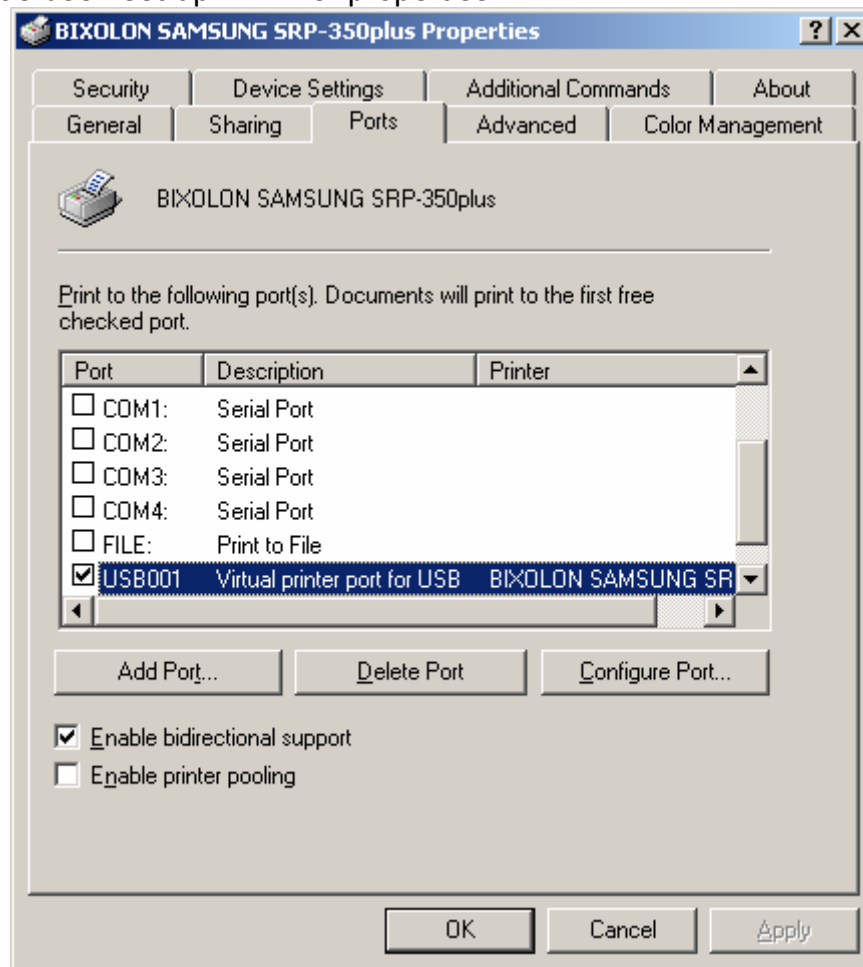
5) Please turn-on the printer.



6) Driver has been installed automatically.

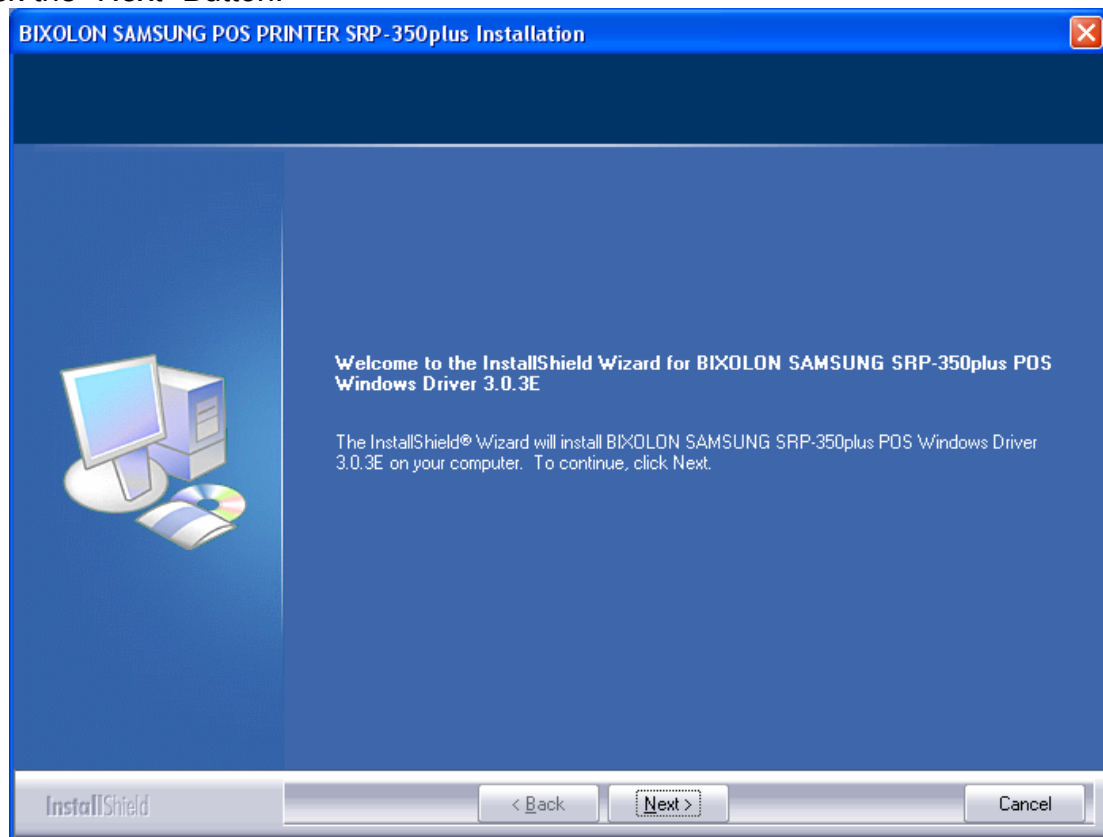


7) USB Port has been set-up in Driver properties.

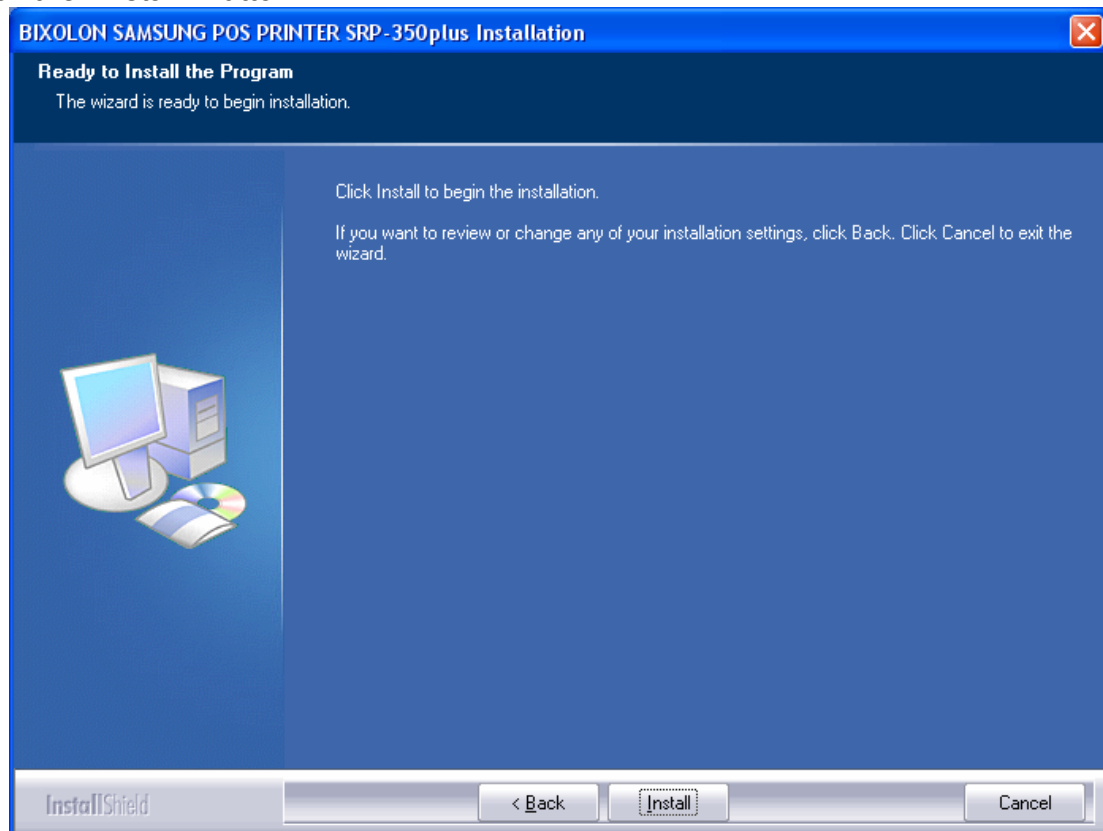


3-3 Windows XP/2003 Server

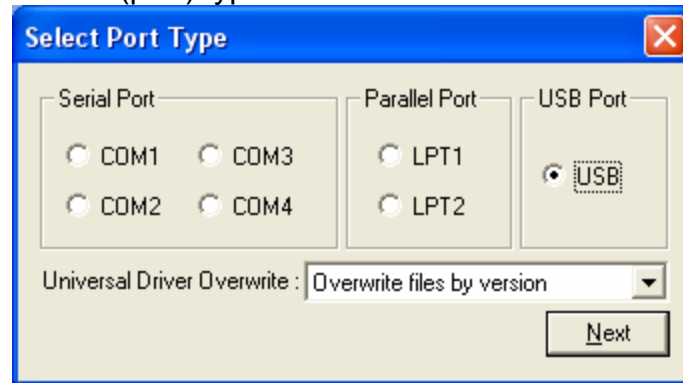
- 1) Double click the Installer file.
- 2) Click the “Next” Button.



- 3) Click the “Install” Button.

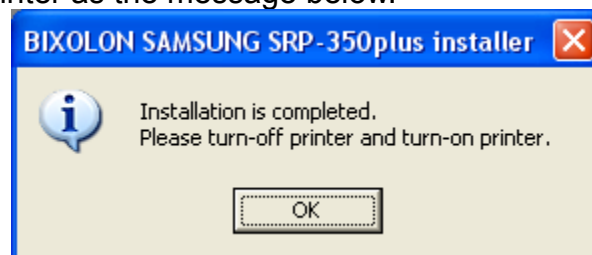


4) Select the “USB” interface(port) type.



※ When You see the Warning Pop-up like above picture, please click the Yes button. It doesn't take any bad affect to the OS as well as no problem to use the printer and driver.

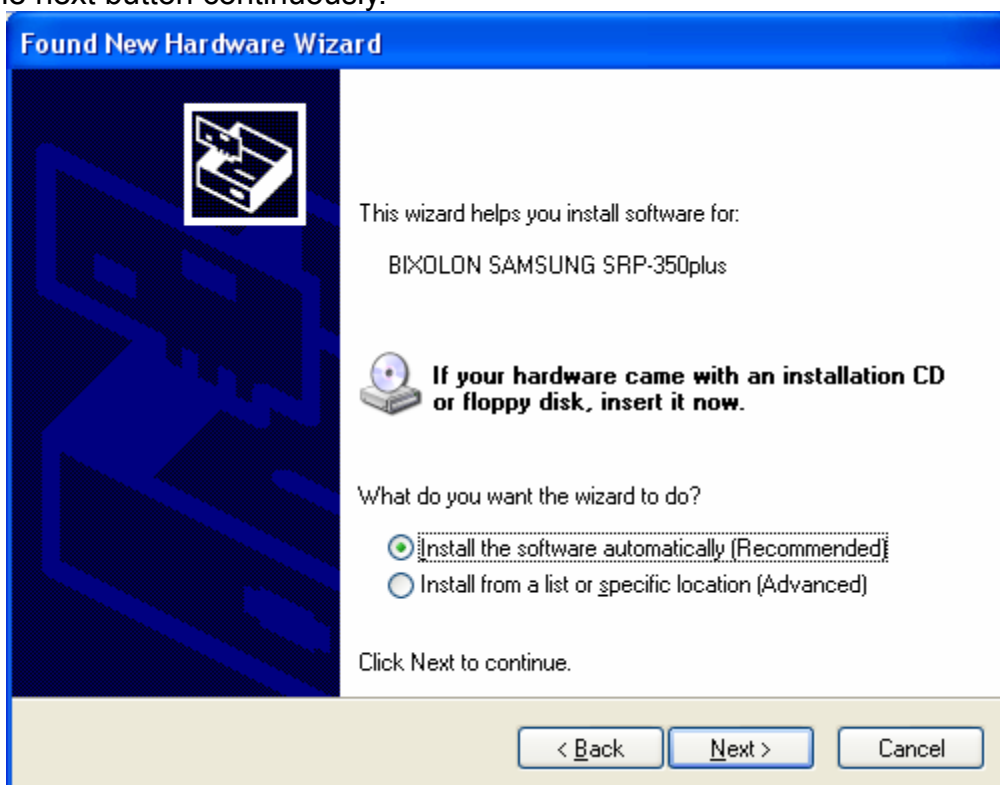
5) Please turn on the printer as the message below.

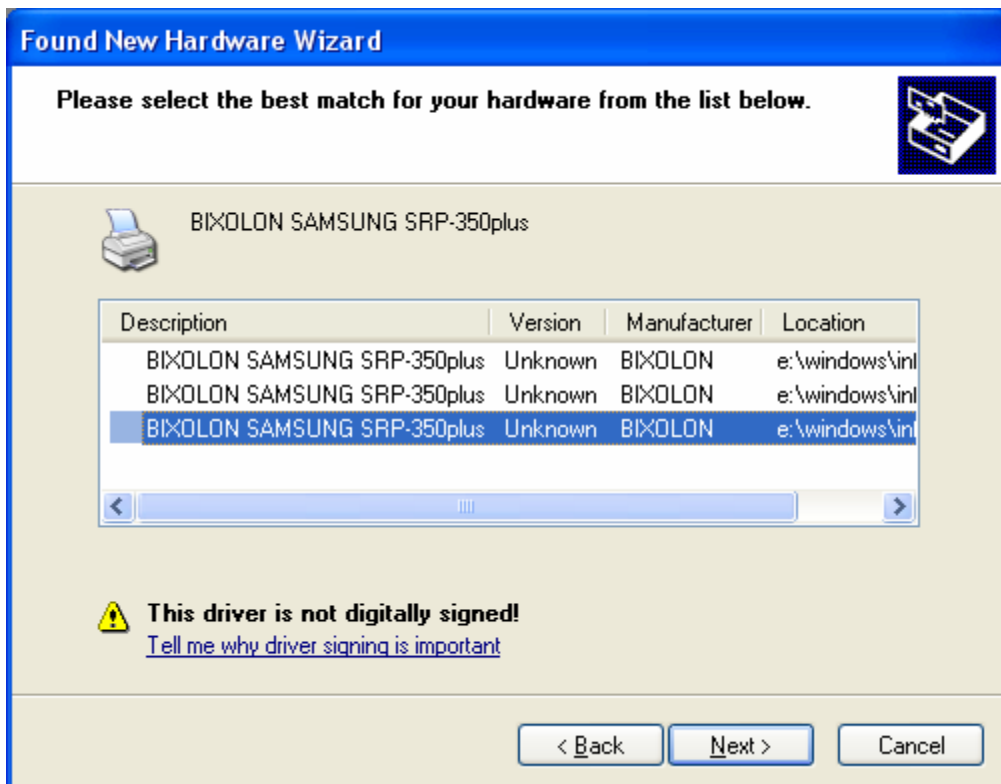
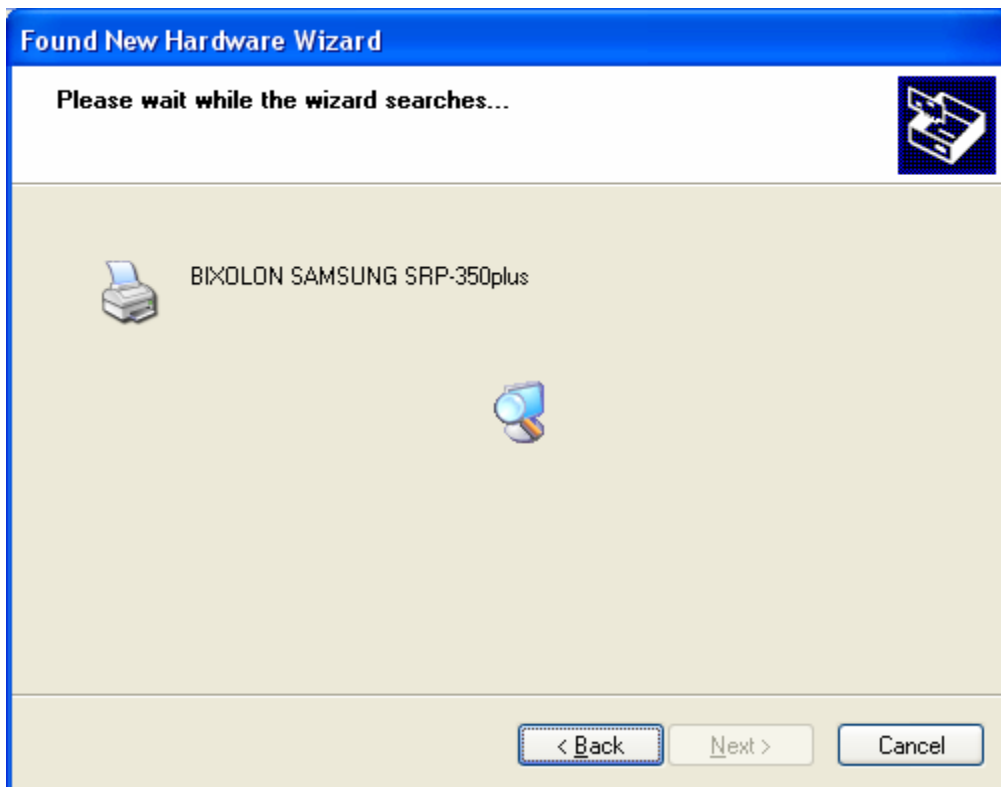


6) When “Add new hardware wizard” pop-ups to install the “USB print support” driver, then click the “Next” button.



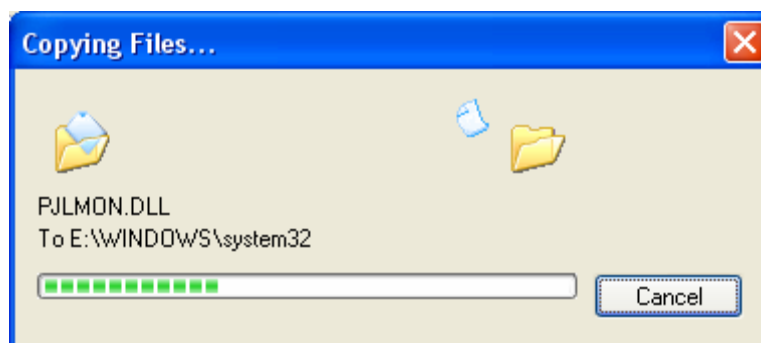
7) Click the next button continuously.



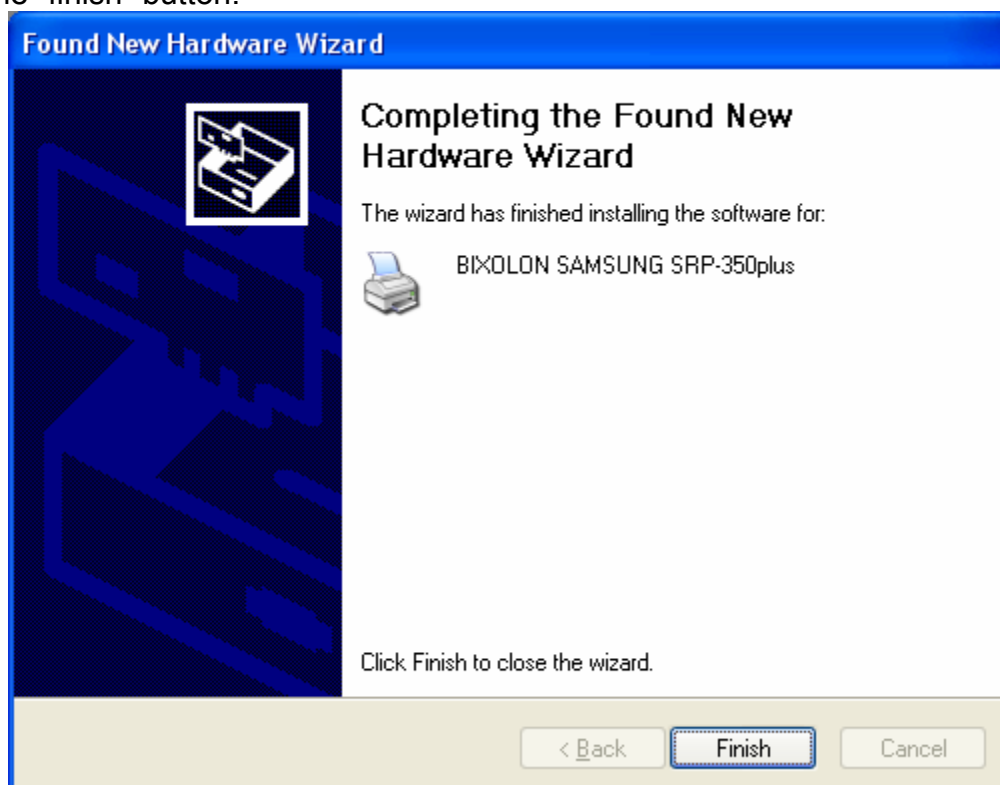




※ When You see the Warning Pop-up like above picture, please click the next button. It doesn't take any bad affect to the OS as well as no problem to use the printer and driver.



8) Click the "finish" button.



9) USB Port has been set-up in Driver properties.

