

POSIFLEX



KS-7415G/7415G-I

Advanced Innovative Fanless POS Terminal

KS-7415G/7415G-I



KS-7415 Series is Posiflex's newest fanless terminal. Available in 15" resistive or IR touch screen, it is an upgraded version of KS-7200 Series that comes with Intel Bay Trail J1900 CPU for enhanced performance. Just like other members of KS family, the KS-7415 Series is designed to deliver uncompromising performance, aesthetics and quality.

Looks

Featuring a cast aluminum body, KS-7415 Series is a robust yet spill & dust resistant Point of Sale equipment, designed by Posiflex to suit the demanding retail and hospitality segments.

Maximum Reliability

Reliability is a key factor that determines the life expectancy of a product. The patented aluminum chassis of KS-7415 is purposely built for maximum heat dissipation. Being fanless, the unit runs silently and efficiently even in a harsh environment, which eliminates a potential point of mechanical failure, thus reducing service costs.

Non-stop Service

Built-in UPS function is embedded on main board developed by Posiflex for backup in the event of a power failure.

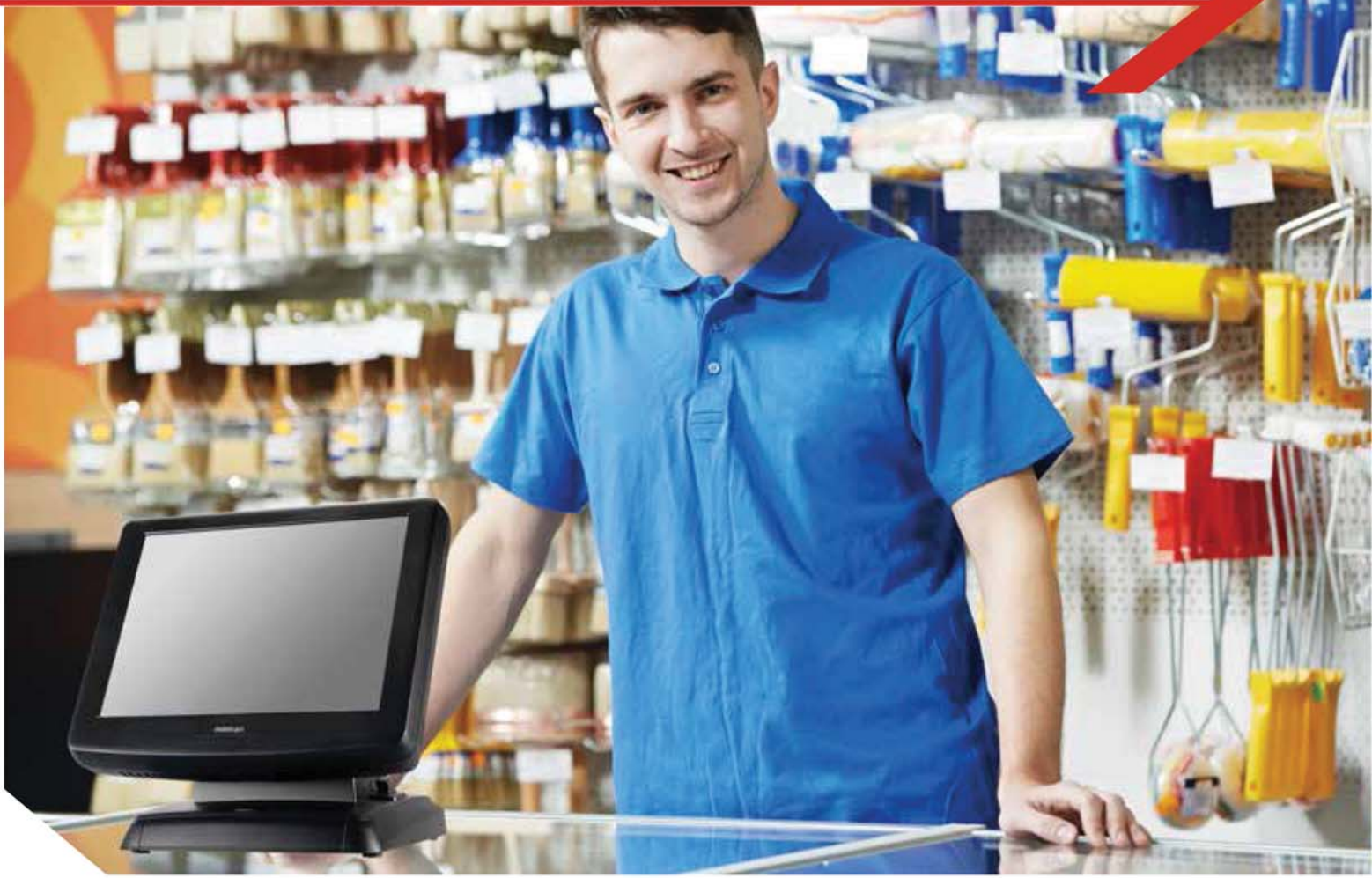


Patent Aluminum
Die Casting Design



Resistive or IR Touch

Spill-resistant and Anti-dust Features



Superior Expandability

KS-7415 Series supports versatile peripheral options such as MSR, customer pole display, programmable keypad, and a wide range of connectivity to meet numerous applications.



with 2nd Display LCD



with Barcode Scanner



with Customer Pole Display



Adjustable LCD



with MSR and
Fingerprint Sensor

KS-7415G/7415G-I

Specification	KS-7415 Series
Processor	Intel Bay Trail J1900, 4C, 2.00GHz/2.42GHz, 2M Cache
System Memory	DDR3L 1333MHz SO-DIMM x 1, max. 8GB
Storage Device	SATA Storage x 1
Power Supply	12V/60W
OS Support	Windows 7 / POSReady 7 / Windows Embedded 8.1 Industry / Windows 10 IoT / Linux per request

Display & Touch

LCD Display	15" TFT LCD, 1024 x 768 resolution
Touch Function	Resistive touch for KS-7415G ; IR touch for KS-7415G-I

Connectivity

LAN Port	10/100/1000 Mb x 1
Serial Port	4 on I/O plate (DB9 x 3 + RJ45 x 1), 5V/12V support on all COM ports
UPS Port	Yes
Parallel Port	1, via optional conversion cable
Standard USB Port	6 x USB 2.0 port
PoweredUSB Port	Optional 24V x 1 + 12V x 3 via GEN8.5E base
Audio	Internal 2W speaker x 1
Display Port	VGA x 1, 12V support for Posiflex monitors + HDMI x 1
CR Port	1, control 2 CR via optional Y-cable
PS/2 Port	1, via optional conversion cable
Internal Expansion Slot	M.2 x 1 (NGFF2230 for WIFI)

Physical Dimension

Dimension (W x D x H in mm)	378 X 304 X 364
Weight (N.W. in Kg)	7.7

Environment

Operation Condition	0°C - 40°C, 20%RH - 90%RH (Equipped with HDD) ; 0°C - 50°C, 20%RH - 90%RH (Equipped with SSD)
Storage Condition	-20°C - 70°C, 10%RH - 90%RH

Options

PD-305UE	2 x 20 LCD, base mount
PD-310UE	2 x 20 LCD, rear mount
PD-2602R / PD-2602UE	2 x 20 VFD, default 200mm pole, base mount
PD-2604UE	2 x 20 VFD, rear mount
PD-76X2R	240 x 64 dot graphics LCD, 200 mm pole, base mount
MSR	See security device
Security Device (SD)	SD-466Z, SD-676W, SD-866W
UPS Battery	2300 mAh / 12V
2 nd LCD Display	LM-3210/KS ; 12" LM-2312 ; 15" LM-8015E, 8025E, 8045E ; TM-8045E, LM-3015E/KS , TM-3015E/KS
KP-300W	36 Key plus lock keypad and/or MSR and/or smart card reader
Spill & resistance	IP44 upgrade for entire terminal

*The product information and specifications are subject to change without prior notice.

*Please refer to the web site for more attachment options.

Authorised Australian & New Zealand Distributor:
Goodson Imports NZ Pty Ltd
20R Cain Road
Penrose, Auckland 1061, New Zealand
Ph: 09-580 1769 Fax 09-579 2379
www.goodsonnz.co.nz

Certifications



Design and Manufacturing in Taiwan by Posiflex Technology, Inc.

2016Q3



POSIFLEX TECHNOLOGY, INC.

No. 6, Wuquan Rd., Wugu Dist., New Taipei City 24886, Taiwan

Tel : +886-2-2299-1599

E-mail : sales@posiflex.com.tw

Fax : +886-2-2299-1819

www.posiflex.com

Authorized Distributor / Reseller