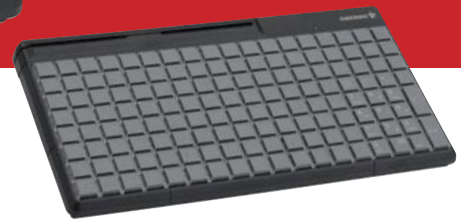


Point of Sale

# SPOS Rows & Columns Keyboards



**Multifunctional Rows and Columns Keyboards with Optional Magnetic Card Reader and Touchpad for POS and Commercial Applications**



## Main Applications

- Grocery/Food
- Convenience Goods
- Hospitality
- Car Rentals
- Postal Services
- Retail
- Transport

## Key Features

- 144 Key Position Matrix in 14" Form Factor for Universal Key Function Assignment
- Robust Product Design with IP 54 Spill and Dust Resistant Key Field for Harsh Environments
- Plug & Play Configuration for all Common POS Features
- Unique Function Enhancement with 'Cherry Tools' Virtual Programming
- Fully Programmable and Relegendable Keyboard for Easy Layout Configuration and Quick Function Calls
- Option for Unlimited Programmability of all Keys in up to 3 Layers Provides Convenient Data Access
- Moving of Keys Allows for Easy Key Position Exchange Including Modifier Functions
- Grouping of Keys Allows for Easy Assignment of 1x2 and 2x2 Key Positions
- Disabling of Single Key Positions or Complete Rows & Columns with Blank Covers
- Pop-up Window for Comfortable Display of Programmed Keys
- High Performance 3-Track Magnetic Stripe Reader with Freely Programmable Headers and Terminators for Each Track
- Selection of Non-keyboard Hexcodes Enhances Security for Credit Card Processing
- Dual Insertion for Bidirectional Swipe of Magnetic Stripe Card
- Audible and Visual Indication of MSR Good Read
- Flexible Parsing and Configuration of Magnetic Stripe Data Including Start/Stop Sentinels
- Powerful 'Cherry Tools' Configuration Software Allows for Quick Product Set Up and Configuration
- Easy Configuration File Transfer with Windows Explorer
- Comprehensive UPOS Support for Windows and Linux. Support of Client-Server Architectures
- Remote Network Installation with Cherry Tools Activator and Runtime Version
- Touchpad Versions Ensure Easy Cursor Navigation at Minimal Desktop Surface
- Yellow Status LEDs for Improved Visibility in Rooms with Artificial Illumination
- Keyboard Comes with Cable and Key Lenses Included in the Box
- Accessory Kit Includes Multiwide Keycaps and Lenses, Paper Inserts in 5 colors, Blank Covers for Easy Hardware Configuration

Point of Sale

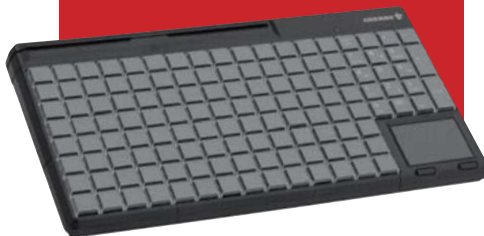
# SPOS Rows & Columns Keyboards

## Part Number Legend

**G86-63410**



**G86-63411**



## Main Part Numbers

### **G86-63410EUADAA**

Black 14" USB keyboard with 3-track magnetic stripe reader. US 142 position Rows & Columns key layout. All keys programmable and relegendable. Includes 'Cherry Tools' configuration software and UPOS drivers.

### **G86-63400EUADAA**

Black 14" USB keyboard. US 142 position Rows & Columns key layout. All keys programmable and relegendable. Includes 'Cherry Tools' configuration software and UPOS drivers.

### **G86-63411EUADAA**

Black 14" USB keyboard with 3-track magnetic stripe reader and touchpad. US 130 position Rows & Columns key layout. All keys programmable and relegendable. Includes 'Cherry Tools' configuration software and UPOS drivers.

### **G86-63401EUADAA**

Black 14" USB keyboard with touchpad. US 130 position Rows & Columns key layout. All keys programmable and relegendable. Includes 'Cherry Tools' configuration software and UPOS drivers.

### **G99-1779ZUB**

Black Accessory Kit including 1x2 and 2x2 lenses & keybodies, colored paper inserts and blanks.

Additional product versions on request.



Point of Sale

# SPOS Rows & Columns Keyboards

## Technical Data

### Interface

USB 2.0

### Current Input

Typ. 35 mA

### Magnetic Strip Reader

Standards:

ISO 7811/-12, AAMVA, JIS  
others on request

Durability:

1 million cycles

Reading speed:

3–125 inch/s at 75 Bit/inch  
3–50 inch/s at 210 Bit/inch

Data is decoded to keyboard scancodes.

### Touchpad

Resolution: 1000 dpi

Two switch-activated mouse buttons

### Cable Length

Approx. 1.85 m

### Key Layout

142/130 position US key layout (default)

### Weight (without/with packaging)

1.4 kg/1.6 kg

### Dimension

360 x 198 x 38 mm (keyboard)

415 x 260 x 70 mm (packaging)

### Packaging Units

66 keyboards per master carton  
2 master cartons per pallet

### Keyswitch Lifetime

25 million operations

### Storage Temperature

-20°C to 60°C

### Operating Temperature

0°C to 50°C

### Available Software

Cherry Tools  
MS Windows™ 98, ME, 2000, XP

Cherry Tools Runtime,  
MS Windows™ 98, ME, 2000, XP,  
XPembedded

OPOS Local Edition  
MS Windows™ 2000, XP, XPembedded

OPOS Client/Server Edition  
MS Windows™ 2000, XP, XPembedded

JPOS Local Edition  
MS Windows™ 2000, XP, XPembedded  
Suse Linux V8.1-9.0 / Kernel 2.4  
Suse Linux V9.1 / Kernel 2.6

JPOS Client/Server Edition  
MS Windows™ 2000, XP, XPembedded  
Suse Linux V8.1-9.0 / Kernel 2.4  
Suse Linux V9.1 / Kernel 2.6

### Approvals

cURus, FCC, CE, BSMI, VCCI,  
C-Tick, GOST-R

### Delivery Volume

Keyboard with Cable, Quick Guide,  
CDROM, Key lenses, Key/Lense  
Removal Device

### Warranty

2 years

For information on repairs or  
warranty status contact:  
Cherry Technical Support  
Phone: 800.510.1689  
E-Mail: [keyboardsupport@cherrycorp.com](mailto:keyboardsupport@cherrycorp.com)

## Contact

Call, fax or visit our  
website for more information.

Last Update: 03/13/08

### Australian Importer/Distributor:

Goodson Imports Pty Ltd

142 Wicks Road

North Ryde NSW 2113

Offices in all Main States and New Zealand

Ph. 02-8875 4544 Fax: 02-8875 4588

[www.goodson.com.au](http://www.goodson.com.au)

### Cherry Electrical Products

11200 88th Avenue  
Pleasant Prairie, WI 53158

Phone: 262.942.6500  
Web: [www.cherrycorp.com](http://www.cherrycorp.com)

E-Mail: [sales@cherrycorp.com](mailto:sales@cherrycorp.com)  
Fax: 262.942.6566

The manufacturer accepts no  
liability for errors or non-availability,  
and reserves the right to change  
specifications without prior notice.

Technical data relates to product  
specifications only. Features may  
differ from those described.  
Only drawings combined with  
product specifications shall be  
deemed binding.