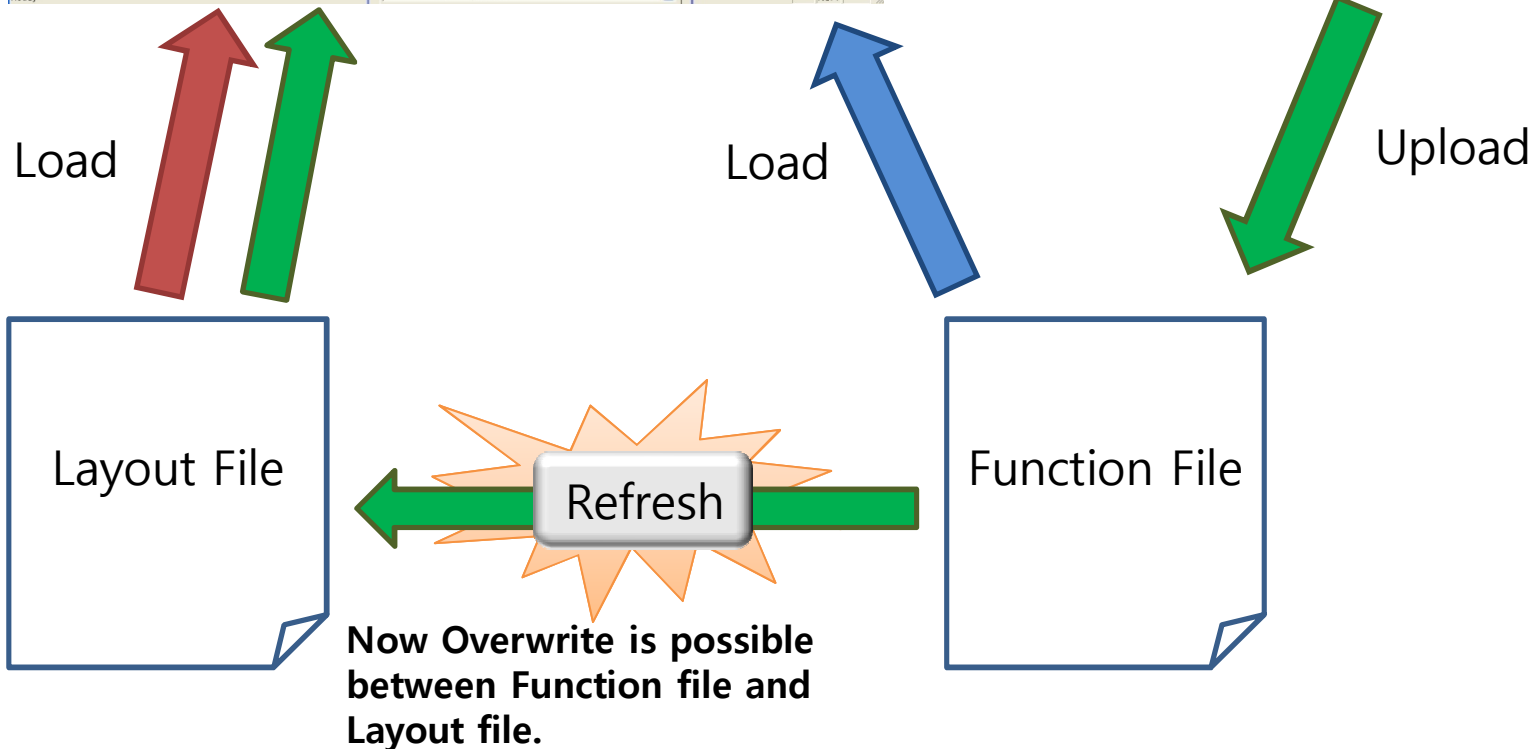
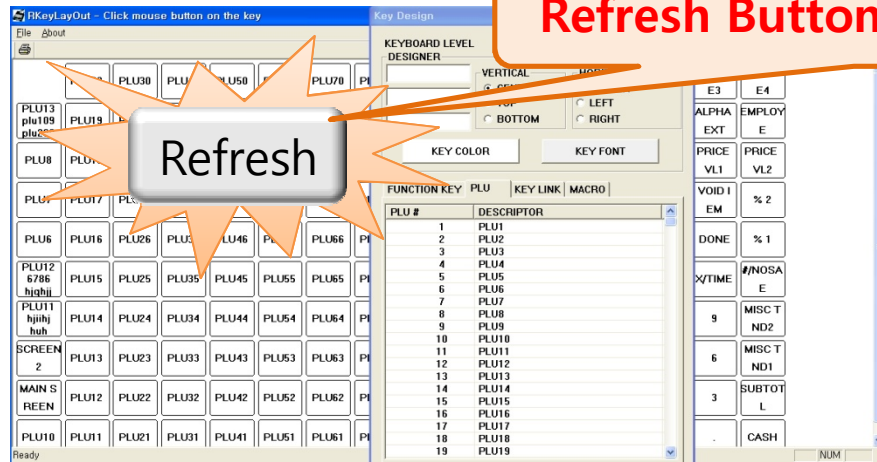


SAM4S Update Result for 'Key Relocation'

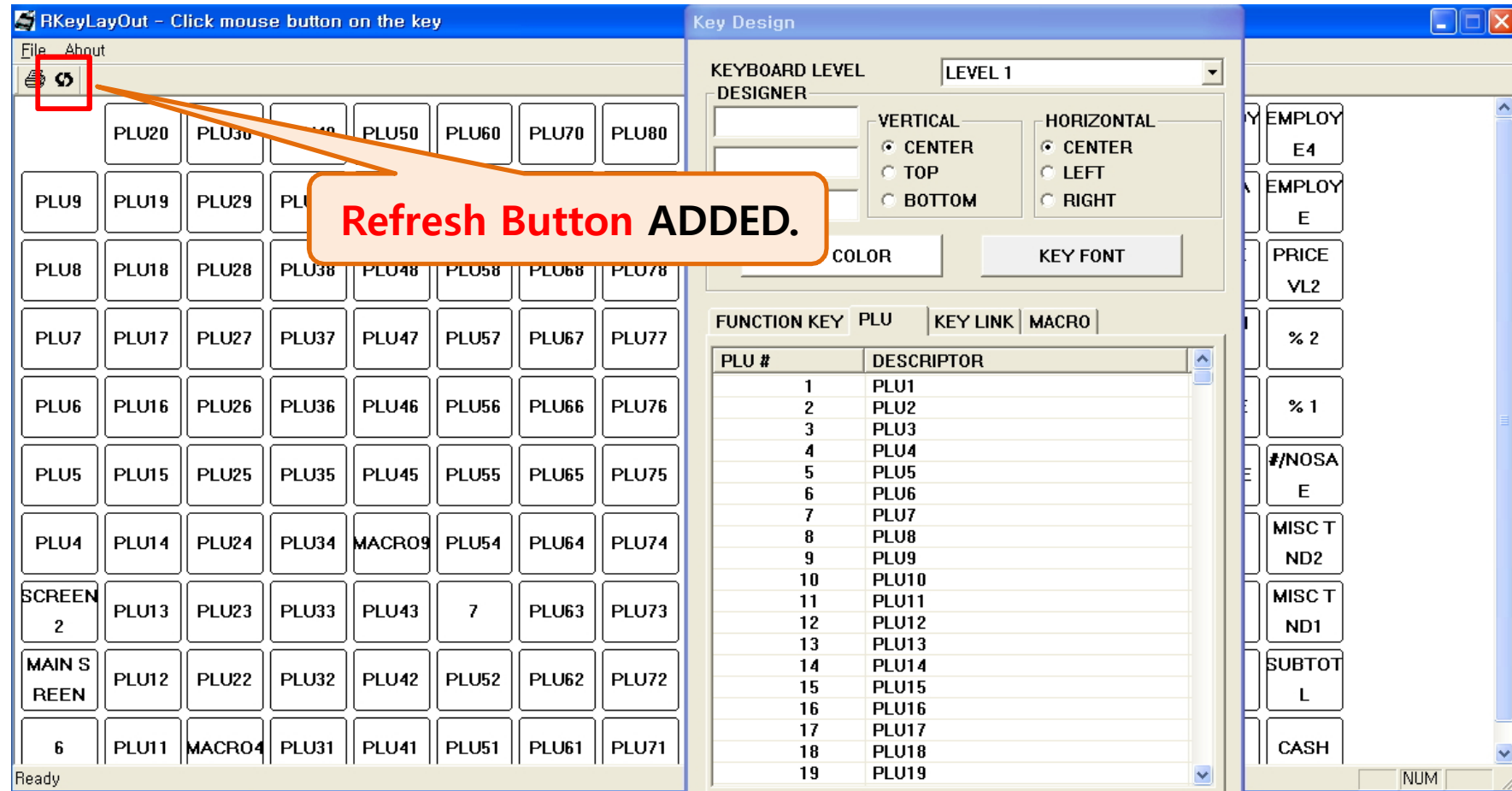
(SPS-500 PC UTILITY)

SAM4S Update Plan

Refresh Button will be ADDED.

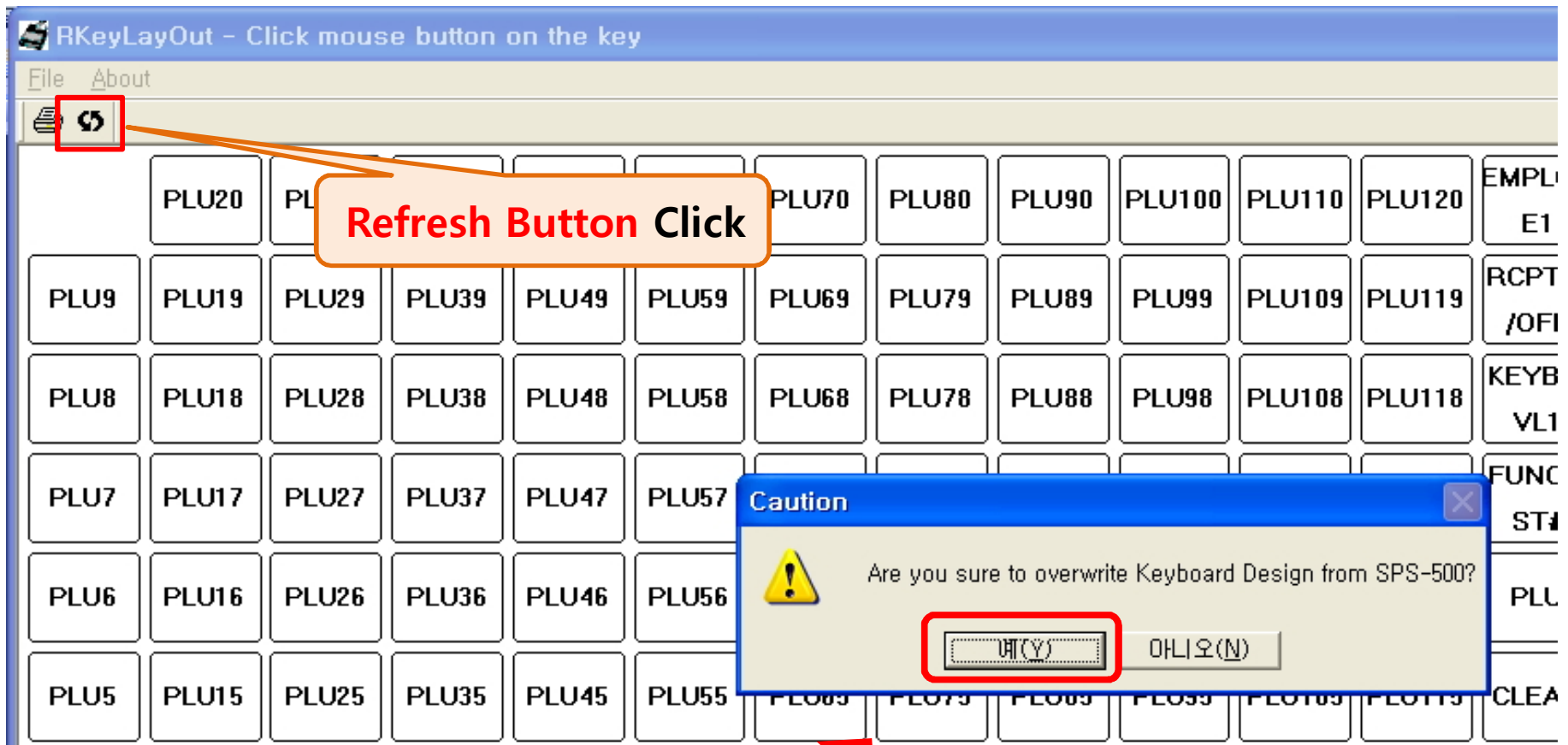


SAM4S Update Result



* If you want to refresh keyboard design. First you should upload Real keyboard designer.

SAM4S Update Result



Now Overwrite is possible
between Function file and
Layout file.