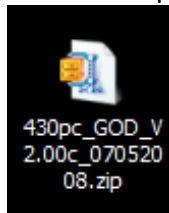
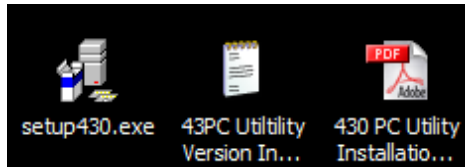


# 430 PC Utility Installation Guide

1. Download the Zipped PC Utility File.

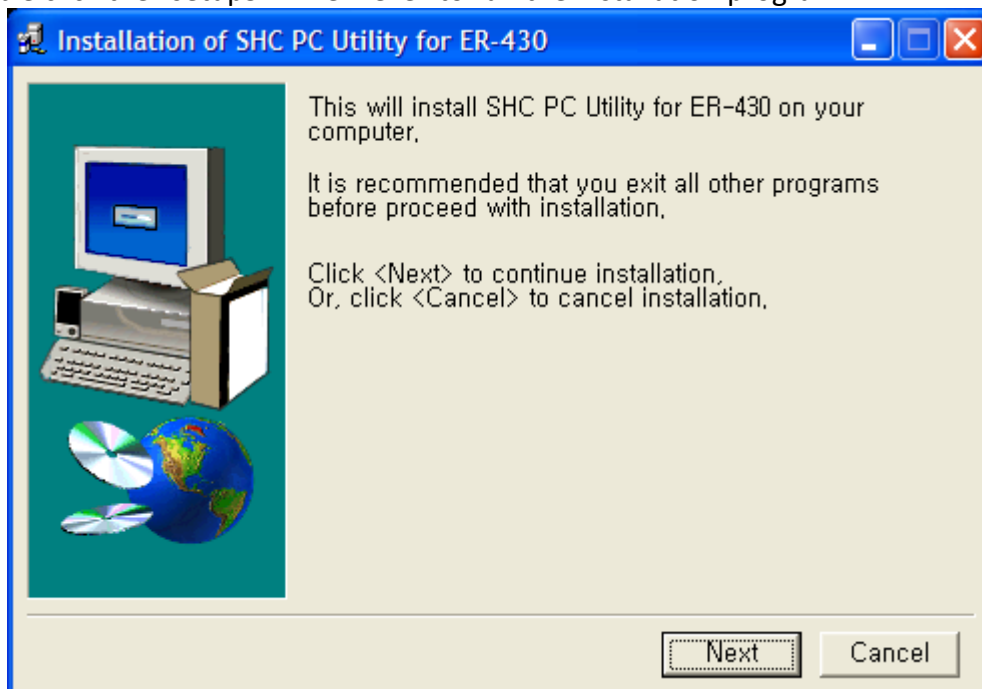


2. Extract and there are three files in the zip package.

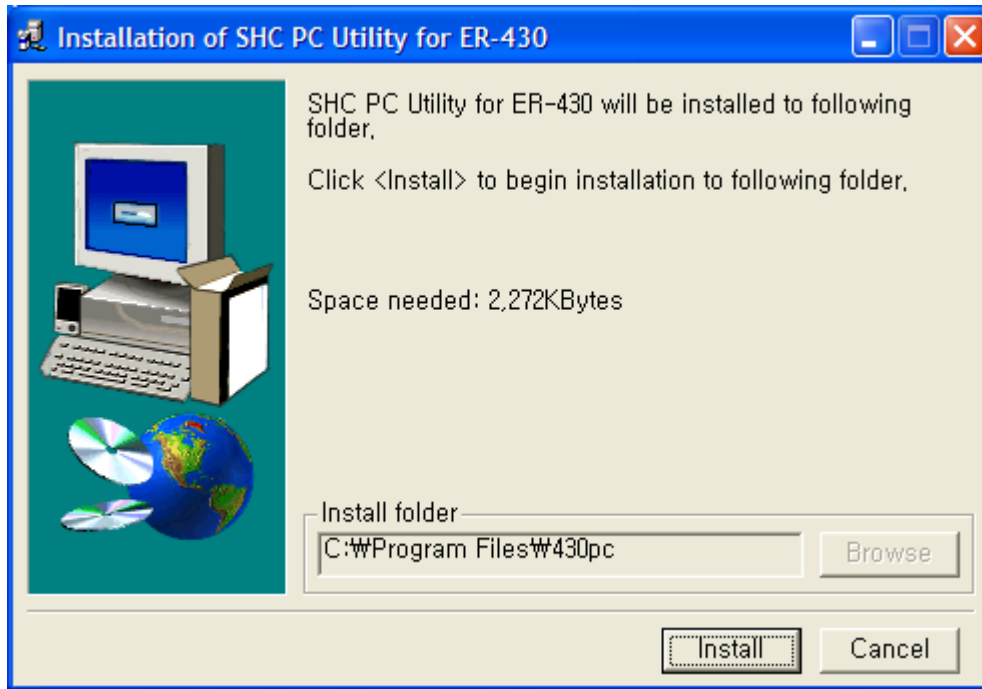


- a. **setup430.exe**
- b. **430PC Utility Version Info.txt**
- c. **430 PC Utility Installation Guide.pdf**

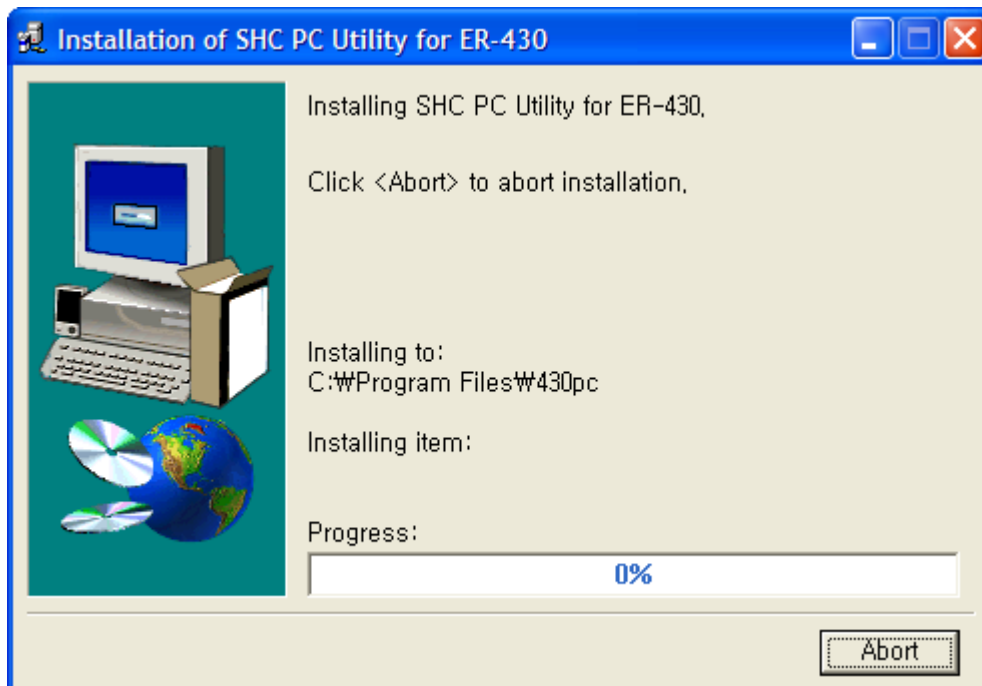
3. Double click the “setup52xxNew.exe” to run the installation program.



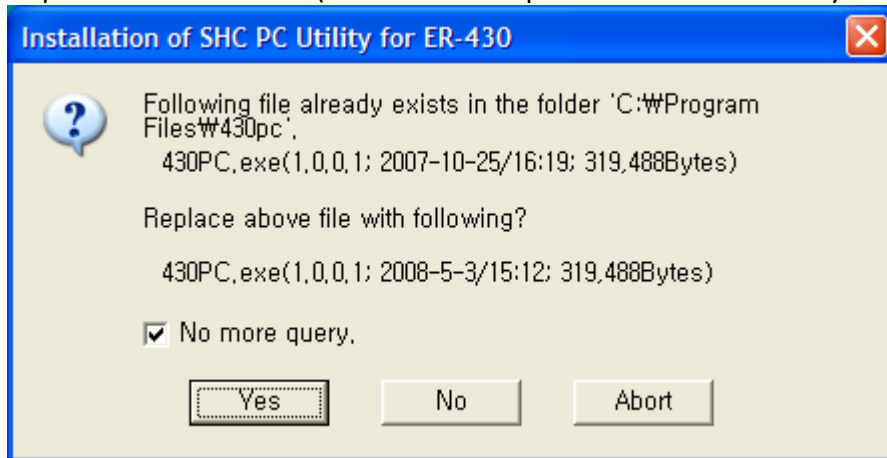
4. Click "Next".



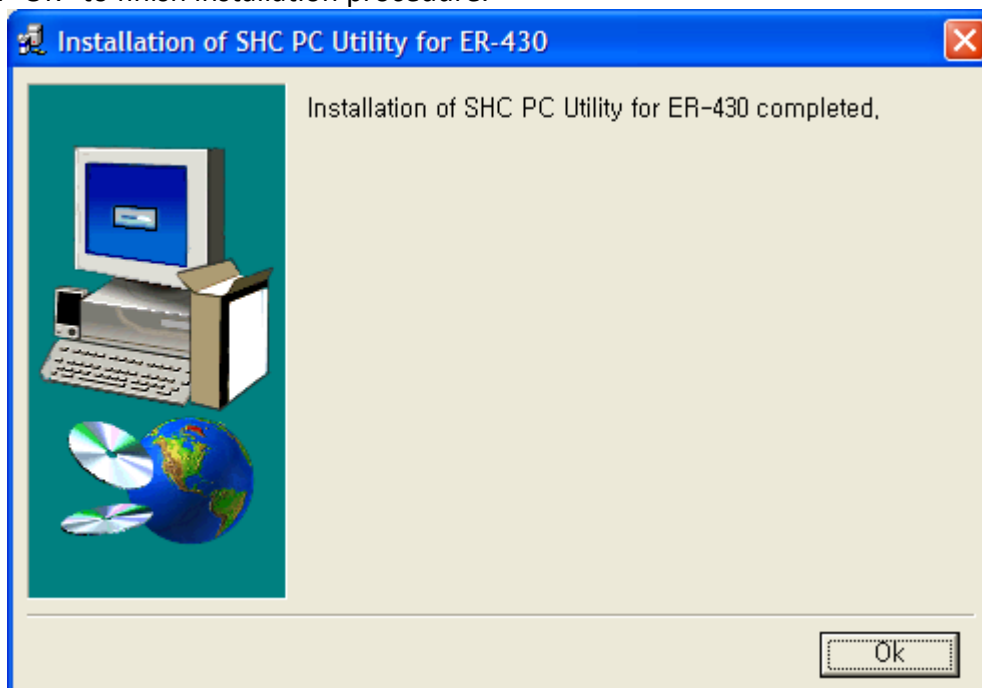
5. Click "Install"



If message screen as below comes up, tick box of “No more query” then click “Yes” bottom to precede installation. (This is because previous version already exist in the system)



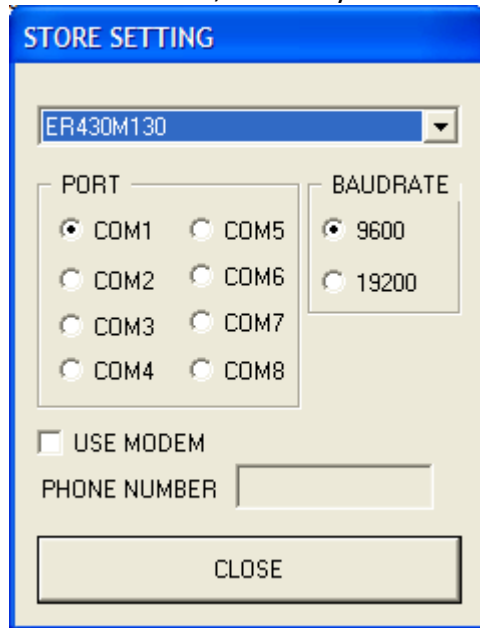
6. Click “OK” to finish installation procedure.



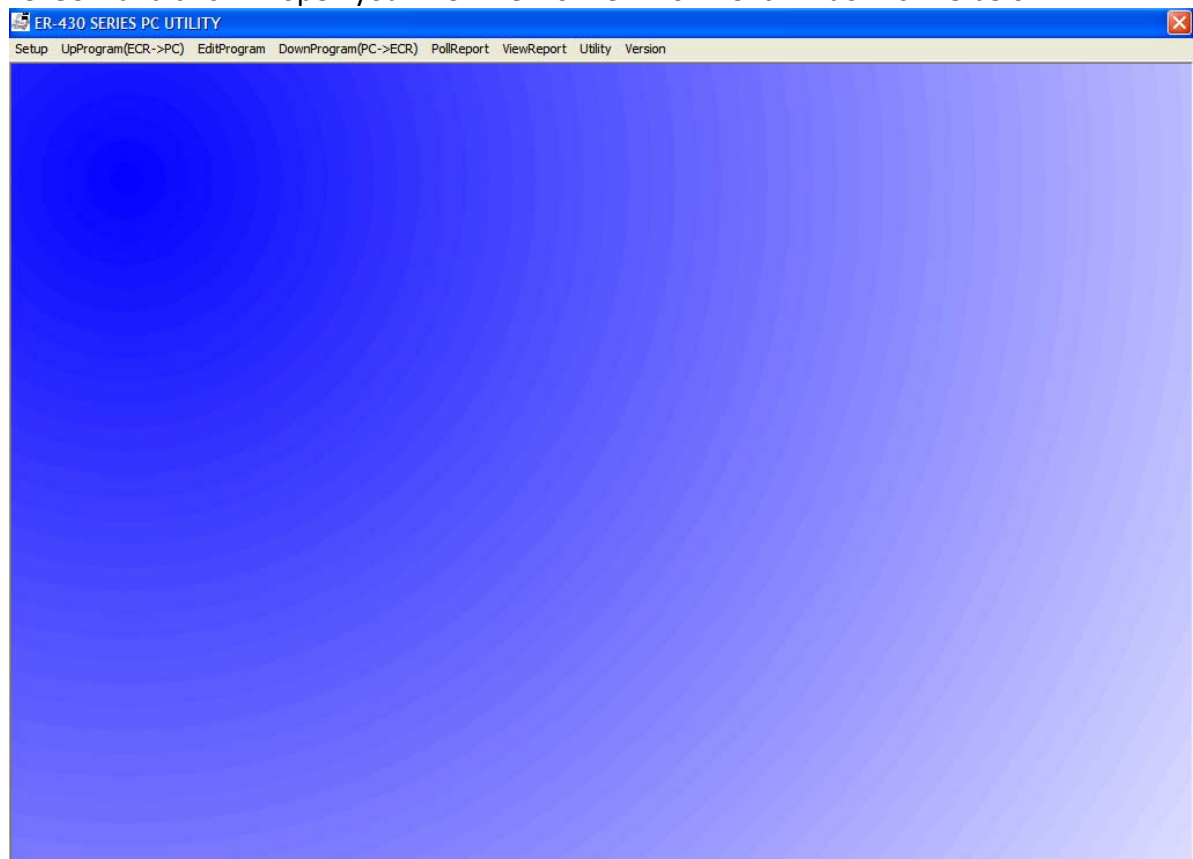
7. The default location of the “52XXNEWPC” link is ‘Programs’ → ‘SHC PC UTILITY’, and you can find the icon like below.



8. Double click the icon, PC Utility will start running and looks like below.

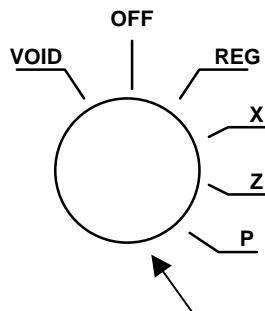


9. Click 'CLOSE' and this will open your file. The work environment window is like below.

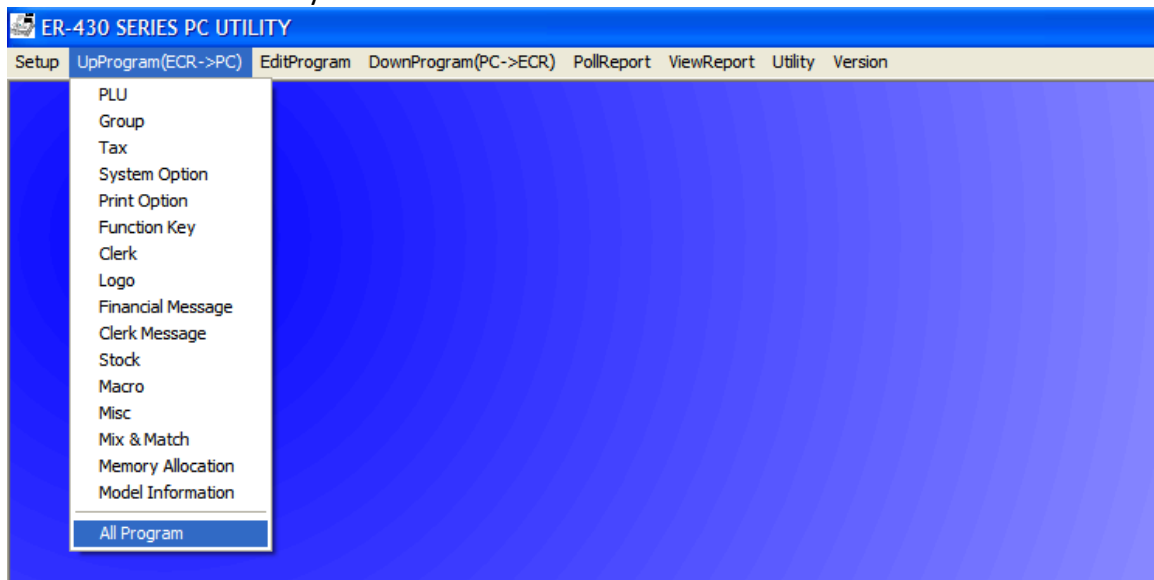


### To connect cash register with PC:

1. Put the key marked with a **C** on it into your cash register
2. Turn the key to one passed **P** into **S-Mode**.



3. Type in **80** press **ST** button (for serial 1)  
Enter **5** press **X/Time** button  
Enter **1** press **Cash** button twice  
(this sets up your cash register port for pc)
4. From the menu screen you will see “UpProgram(ECR->PC)”, then select “All Program”.  
This will send all the files to your PC



5. After you finished program, select “DownProgram(PC->ECR)”, then select “All Program”.  
This will send all programmed files back to your register.

