

9.7" LCD display Installation Manual

Caution for safety

Review instructions carefully before installing.

- Install in a cool and well ventilated location.
- Connect power cable to a grounded 3-prong outlet.
- Plug power cord securely.
- Use properly rated power extension cords.
- Disconnect from power during electrical storms.
- Refer to a qualified technician for repair.
- Before disassembly power off and unplug power cables.

[User guide]

Class-A equipment (Broadcast/telecommunication equipment for business)

This product is registered for conformity of electromagnetic wave. Please be advised that this product be used out of home

[Certificate information]

Name of machine: 9.7" monitor.

Authorized company: Shin Heung Precision Co.,Ltd.

Made in Korea / Made by Shin Heung Precision Co.,Ltd.

Identification code of authorized maker:

KC : MISP-REM-SHC-SCD-100

FCC : EMC-FCC-2150

CE : EMC-CE-4499



Specification

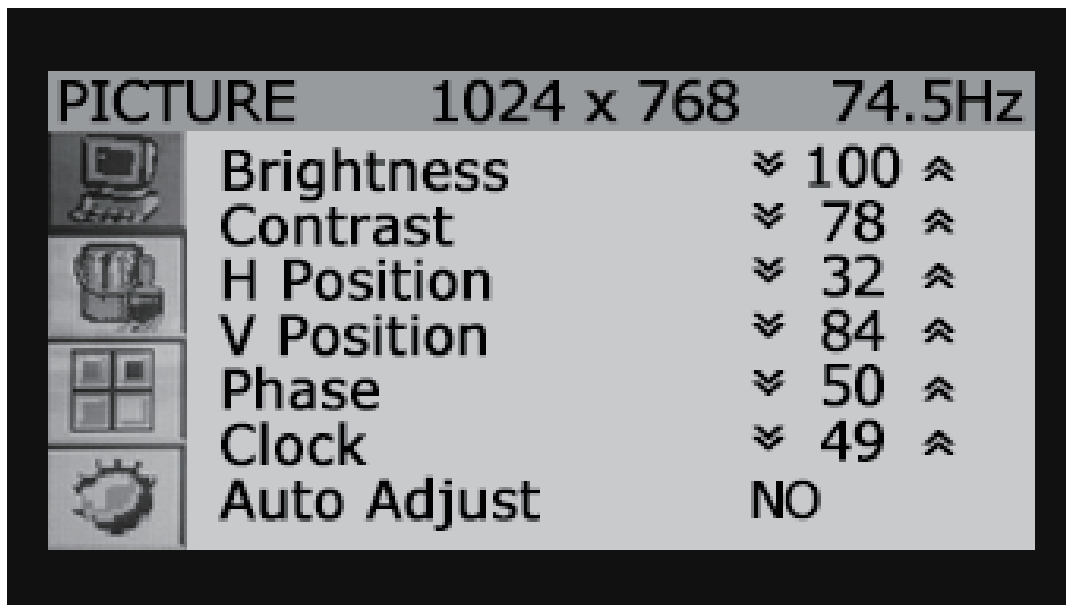
LCD panel	Size: (9.7"/LED Black light). 196.61mm(H) x 147.46mm(V) Pixel pitch: 0.192mm(H) x 0.192mm(V)
Weight	1.1kg
Color	262K Color
Resolution	1024 x 768 @ 60Hz.
Input signal	RGB analog 0.7Vp-p±5% Separable H/V Sync. TTL level (V high >= 2.0V, V low <= 0.8V)
Luminance	300CD
Input power	12V/1A, 50/60Hz±3Hz
Interface	15 PIN RGB D-SUB cable.
Measurement	246mm(W) x 197mm(H) x 115mm(D).
Environment condition	Temperature: 10°C~40°C (50°F~104°F) Humidity: 10%~80% Storage Temperature: -20°C~45°C (-4°F~113°F) Storage Humidity: 5%~95%
Plug-in and play	Setting of monitor is optimized by data exchange between monitor and terminal. Monitor is set automatically but user also sets if necessary.
Pixel	According to technical limit in production, around 1ppm of pixel is brighter or darker but it doesn't affect performance of monitor.

Power saving

This monitor includes a power saving mode. The monitor will enter sleep mode if it is not used for a pre-determined period of time. When in sleep mode the monitor is off and color of power indicator is changed. The monitor will exit sleep mode if the user touches the keyboard or mouse. Sleep mode is only available with terminals providing a power saving feature.

Power saving	Normal	Sleep mode	Off mode
Power consumptio	20W	less than 0.5W	less than 0.5W

 **Power consumption is "0" watts after power cord is disconnected.**



PICTURE: Image setting (Brightness/Contrast/Color Adjust (Color Temp))

- Brightness: Set brightness of monitor.
- Contrast: Set contrast of image.
- H/V POSITION: Change width and length position of image.
- Phase: Adjustment horizontal size of image (available in analog).
 - * Difficult to determine with naked eye.
- Clock: Fine tuning (available in analog).
 - * Difficult to determine with naked eye.
- Auto Adjust: Automatic adjustment.

COLOR: Color setting (Color Temp/Red/green/Blue/Auto Color)

- Color Temp: Adjustment of red, green and blue.
- Red: Adjustment of red.
- Green: Adjustment of Green.
- Blue: Adjustment of Blue.
- Auto Color: Automatic adjustment.

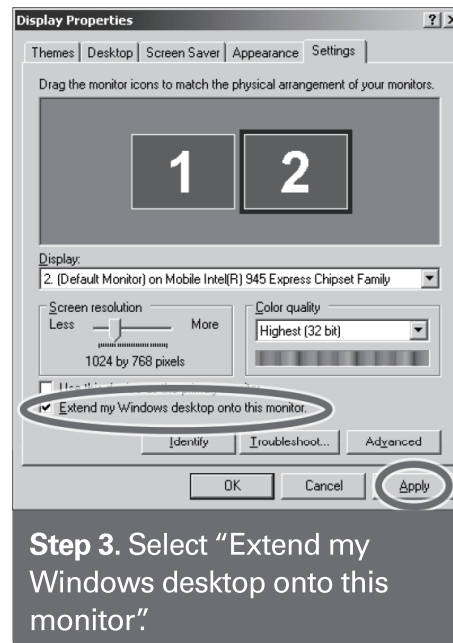
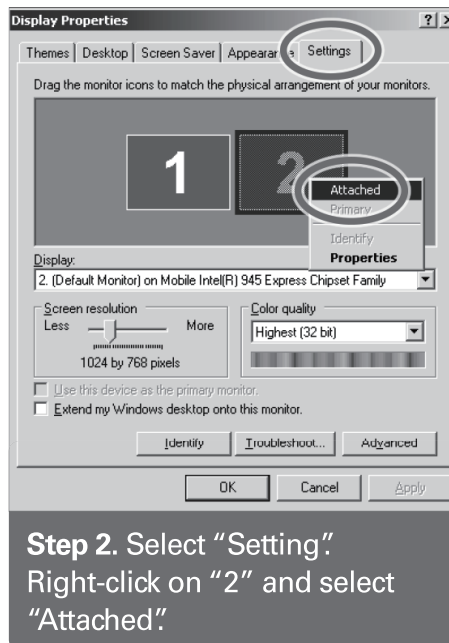
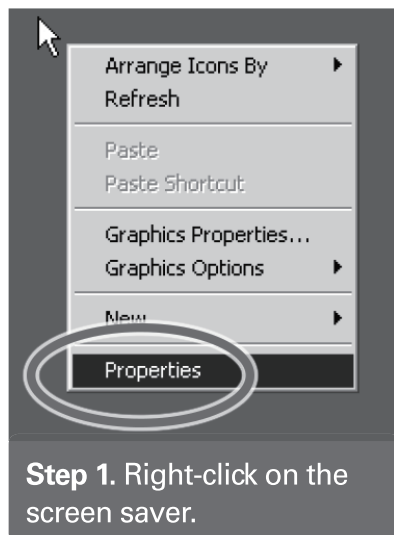
OSD: Menu setting (OSD H/V position: Change Horizontal and Vertical of OSD.

- OSD H/V position: Change position of horizontal and vertical.
- OSD offTimer: Change timer.
- Transparency: Change transparency of menu.

Misc: Configuration(Language/recall)

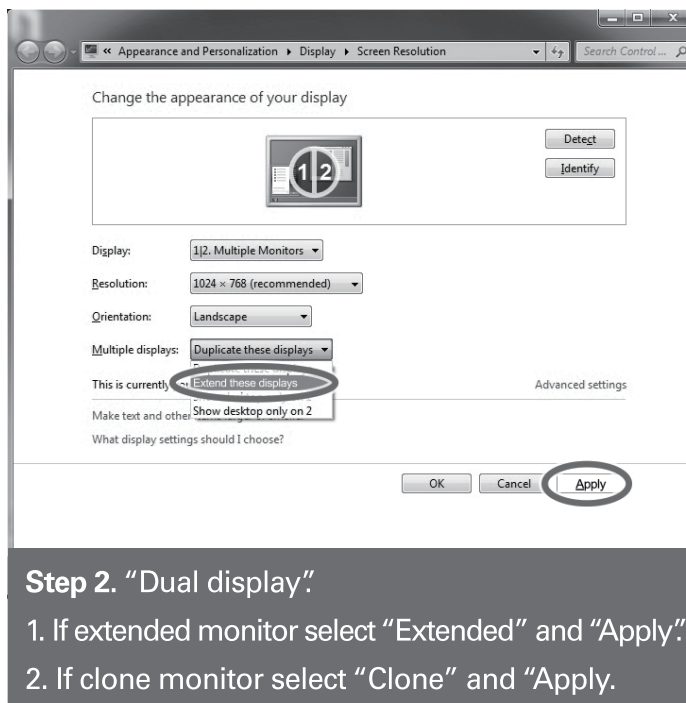
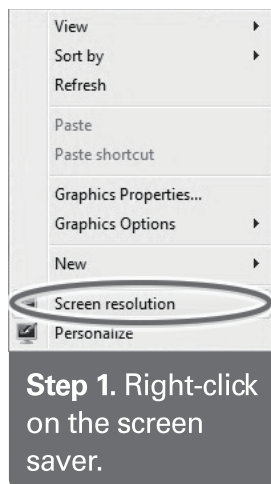
- Language.
- Recall.

Setting dual monitor (POSReay 2009)



✎ If want to choose "Clone" mode select "Advanced".

Setting dual monitor (POSReady 7)



✎ To set coordinates on touch screen refer to section of "Touch screen" in "System use".

How to connect 9.7" LCD with POS terminal #2.

Caution

- Turn main power off before installation.
- Use gloves if necessary to avoid injury.
- Refer to the photos below for details.

Unpacking



2pcs of 3 x 6 screws.

Before



After



1



Detach upper-back cover.

2



Lay terminal face down on a soft surface. Remove 4 screws as shown.

3



Detach stand.

4



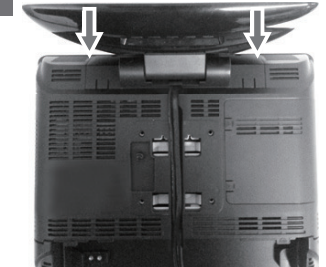
Detach cable cover.

5



Align cable as shown.

6



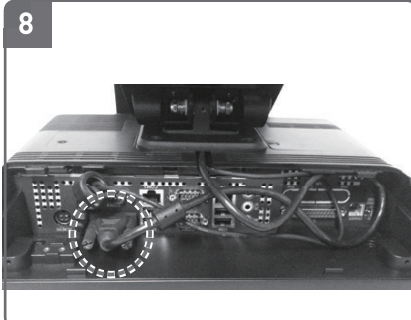
Install 9.7" LCD as shown. Install 2 screws.

7



Assemble stand and install 4 screws.

8



Connect RGB cable of monitor to the DC Out port on connection panel.

9



Re-attach cable cover.