

Instructions for Opening Cable Cover



POS system display angle should be adjusted as shown in the picture.

Instructions for Routing Cables



Cables can be routed to exit the terminal base by removing one of three knock-out openings located at the right, left and rear of the terminal base.



Safety Precautions

Be sure to read the **Safety Precautions** before using the POS system.

- 1 Do not block the ports(holes), vents, etc. of the POS system and do not insert objects.
- 2 Plug the power cord firmly into the power outlet and AC adapter.
- 3 Do not exceed the standard capacity (voltage/current) of a multi-plug or power outlet extension when using it for the product.
- 4 In case of lightning, immediately turn the POS system off, disconnect the power cord from the wall outlet.
- 5 Never disassemble or repair the POS system by yourself.
- 6 Shut down the POS system and disconnect all cables before disassembling the POS system.

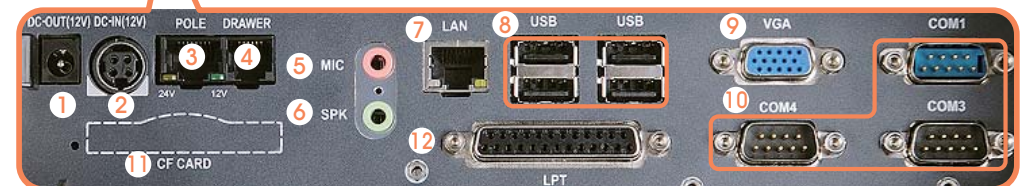
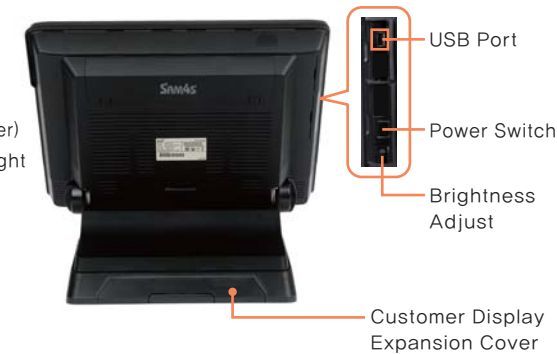
Memo

Name and Function of each part

Front View



Back View



- | | |
|---|---|
| 1 | DC-OUT(12V) – DC Power Output Port |
| 2 | DC-IN(12V) – DC Power Supply Port |
| 3 | POLE – Customer Display Port (Option) |
| 4 | DRAWER – RJ11 Cash Drawer Port (Option) |
| 5 | MIC – Microphone |
| 6 | SPK – Audio Port |

- | | |
|----|----------------------------|
| 7 | LAN – RJ45 LAN Port |
| 8 | USB – USB Port |
| 9 | VGA – Dual Monitor Port |
| 10 | COM – Serial Port |
| 11 | CF CARD – CF CARD (Option) |
| 12 | LPT – Parallel Port |

Connecting External devices

Keyboard and Mouse Connection



Lan(RJ-45) Connection



Speaker Connection



USB Devices Connection



Printer Connection



Power Supply Connection



Customer Display Connection



Power Supply Connection

- 1 Connect the power supply output cable to the DC Power Supply port on the connection panel.



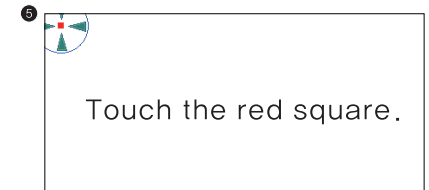
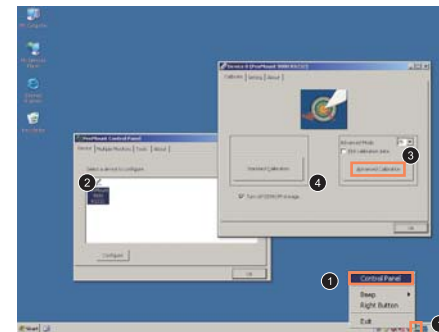
- 2 Connect the power supply to a power outlet.



Adjustment of Touch Screen

- Please, adjust coordinates (value) as following steps in case of error or distortion of touch function.

- 1 Open the "PenMount Control Panel" clicking PM icon on the Tray icon ber.
- 2 Double click a button of desired device on "PenMount Control Panel" .
- 3 Select 25 of list box in advanced mode.
- 4 Click "Advanced Calibration" button.
- 5 Adjusting the touch monitor settings by following the screen instruction.



Connection of Printer

- ⚠ Please, connect cables & devices after POS system power off.

- 1 Connect a printer cable to POS system port.
- 2 Power on printer after printer's power cable connection.
- 3 Power on POS system.

